

LIVEABLE CITIES CONFERENCE 4|5 NOVEMBER 2024



EMBASSY OF DENMARK



CreativeDenmark



scottishcitiesalliance



The Metropolitan Everyday *An Idea in Place*

Prof Brian M. Evans PhD FRTPI FLI FCSD FAcSS FRGS AoU
The Glasgow School of Art

GLASGOW
URBAN LAB
THE GLASGOW
SCHOOL OF ART

Geneva UN Charter
Centre of Excellence
SMART SUSTAINABLE CITIES



UNECE

LIVEABLE CITIES CONFERENCE 4|5 NOVEMBER 2024

Article 2

“... comprehensive, far-reaching, and **people-centred**, universal and transformative goals and targets...”

Article 5

“... **integrated and indivisible** to balance the three dimensions of sustainable development, economic, social and environmental ...”



*Agenda 2030 Transforming our World
the Sustainable Development Goals*

LIVEABLE CITIES CONFERENCE 4|5 NOVEMBER 2024

Source: UN-Habitat



The SDG/Ts are designed to be **“people-focused, integrated and indivisible”** to create a positive synergetic system for Sustainable Development (Agenda 2030 Declaration)



Agenda 2030 Transforming our World the Sustainable Development Goals

...

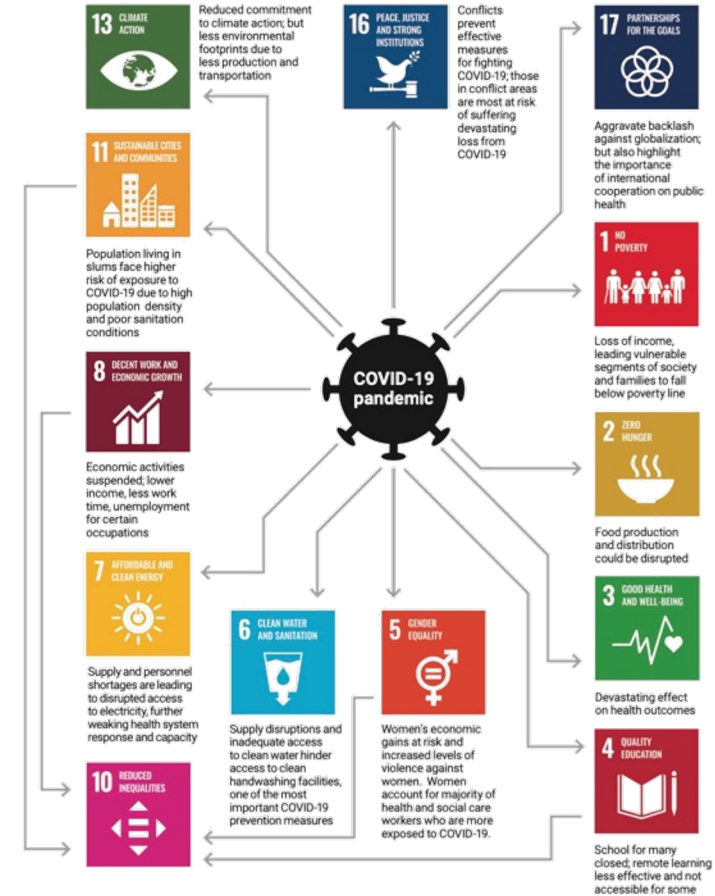
LIVEABLE CITIES CONFERENCE 4|5 NOVEMBER 2024

Source: UN-Habitat



The SDG/Ts are designed to be **“people-focused, integrated and indivisible”** to create a positive synergetic system for Sustainable Development (Agenda 2030 Declaration)

Source: UNDESA



... this can be distorted by global forces – COVID-19

The COVID-19 pandemic is an example of global forces that influence the balance and dynamics of climate, demographic, and technological change

Agenda 2030 & SDG/Ts need systems responses at international, national and local scales.

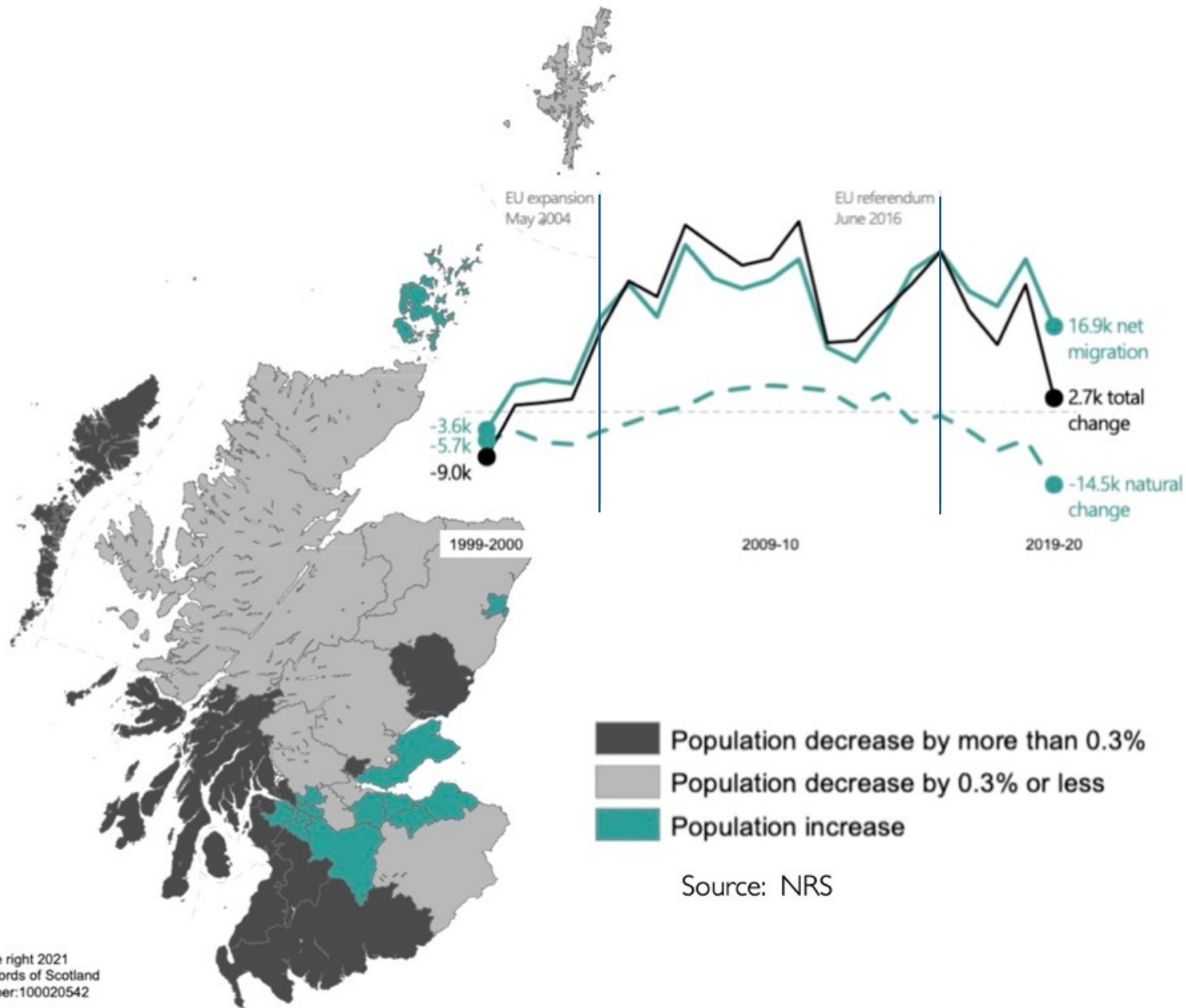


2022

Source: Glasgow Urban Lab

COUNTRY	Pop M 1971	Pop M 2020	% change
Scotland	5.3	5.5	5%
Denmark	4.9	5.8	17%
Finland	4.6	5.5	20%
Netherlands	13.2	17.4	32%
Norway	3.9	5.4	38%
Ireland	3.0	5.0	67%
NZ	2.9	5.1	78%

Source: World Bank, Irish government

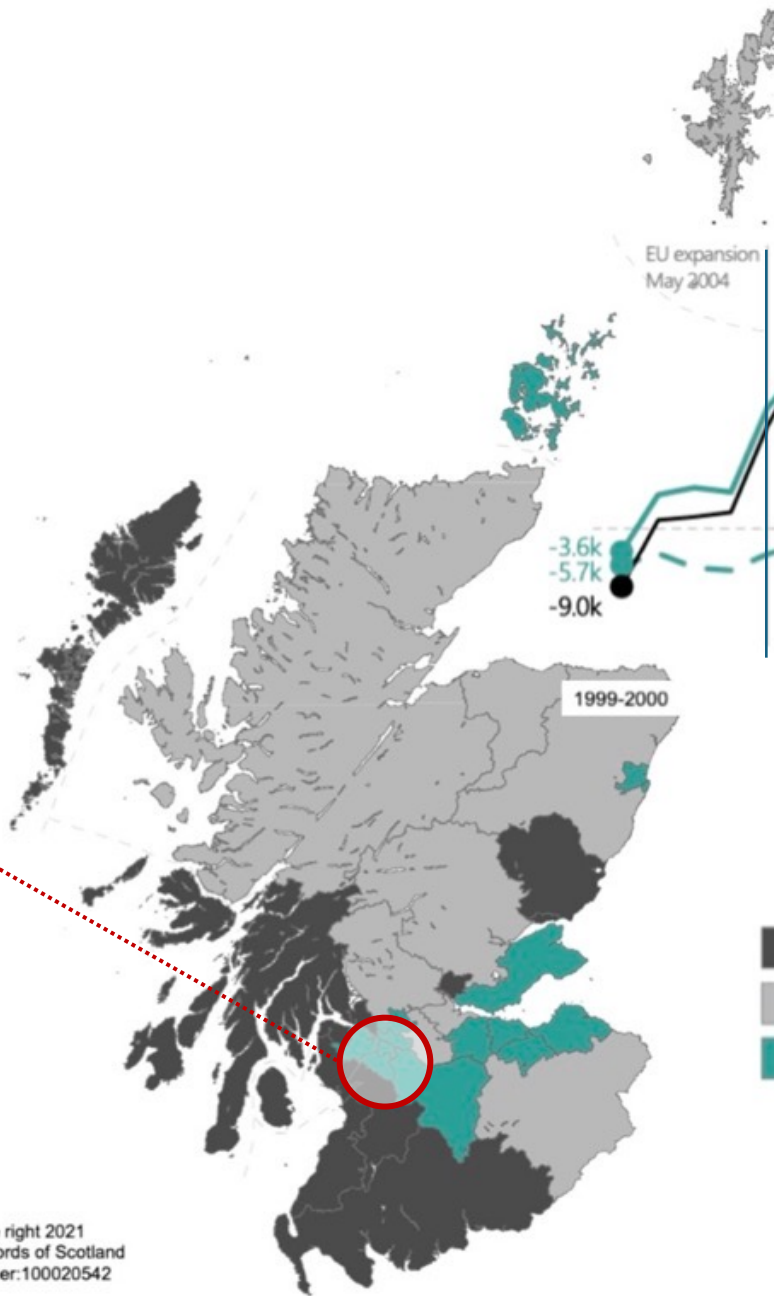


Source: NRS

The Bigness of Glasgow

Glasgow Primary Urban Area

Glasgow City Council
 East Dunbartonshire Council
 East Renfrewshire Council
 Renfrewshire Council



EU expansion
 May 2004

EU referendum
 June 2016

1999-2000

2009-10

2019-20

-3.6k
 -5.7k
 -9.0k

16.9k net migration

2.7k total change

-14.5k natural change

- Population decrease by more than 0.3%
- Population decrease by 0.3% or less
- Population increase

Source: NRS

In search of Place BUILDING the EVIDENCE

“

Place is one of the most multi-layered and multi-purpose words in our language.”

ALESSANDRO DELL'ORTO

The Ubiquity of Place

Place is everywhere, places are all around us. Everywhere is some place. Place is a general construct, a concept that gives everywhere some qualities, some specificity whether cultural, social, environmental or economic. And these in turn connote other qualities – ceremonial, beautiful, tranquil, vibrant, community, busy, unloved places.

PLACE – What do we mean?

The virtuous loop of place quality and value



Outcomes: 'big ticket' policy arenas



Source: Carmona (2019)

Health outcomes

- Better physical health
- Better mental health
- Better general fitness
- Greater daily comfort
- Enhanced quality of life

Social outcomes

- Fewer accidents
- More social integration
- Lower rates of crime
- Better educational outcomes
- Street-level viability and sociability
- Civic pride
- Inclusiveness
- Enabling environments for older age
- Enabling places for people with disabilities

Economic outcomes

- Residential property uplift
- Retail property uplift and reduced vacancy
- More viable investments
- Increased local tax base
- Reduced public expenditure
- Lower costs of living
- Higher productivity

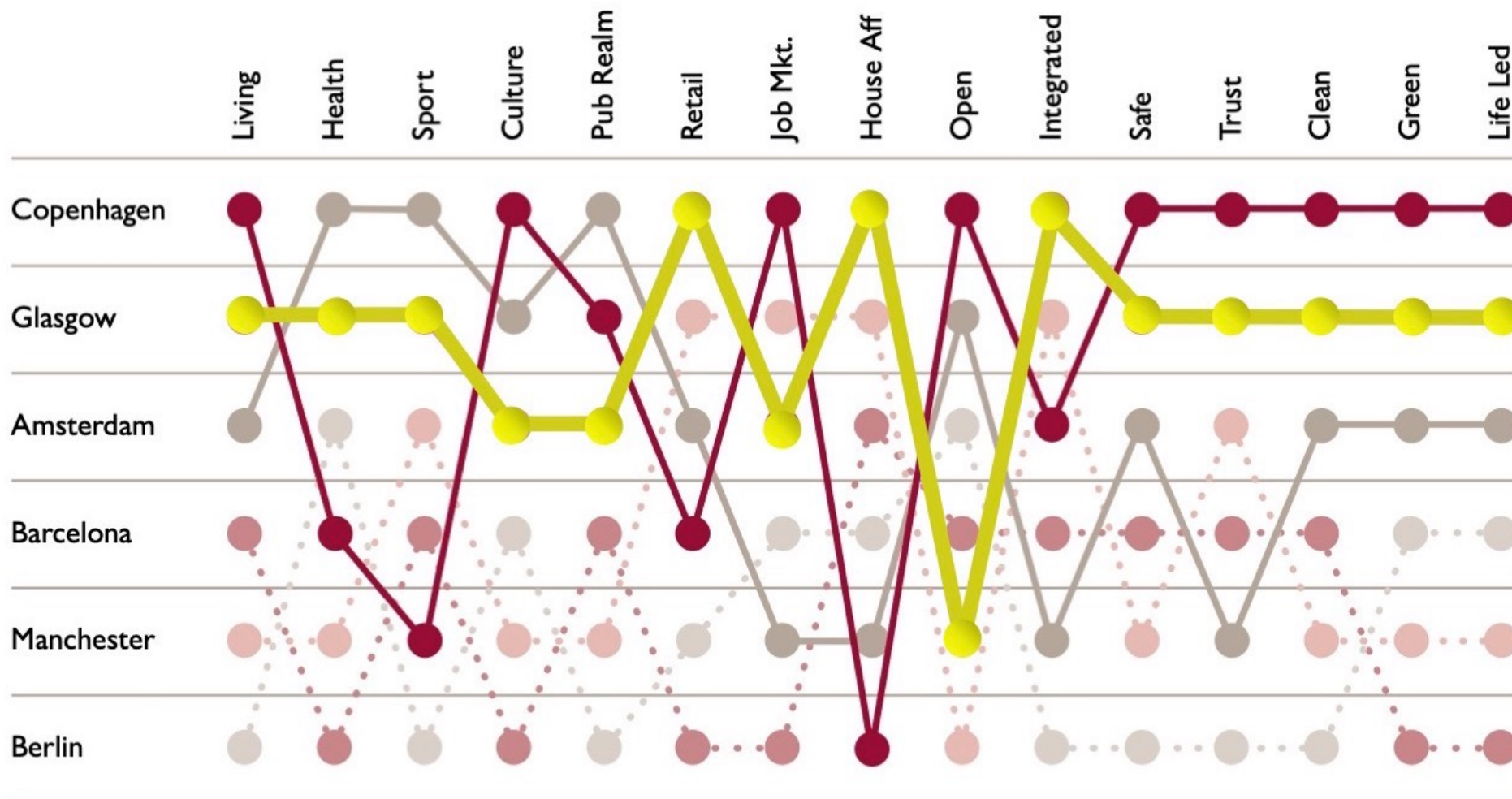
Environmental outcomes

- Reduced energy consumption
- Reduced carbon emissions
- Adaptive reuse of buildings and spaces
- Reduced pollution
- Greater resilience
- Ecological diversity

Source: Carmona (2019)

VALUE | QUALITY | ATTACHMENT

Figure 5-7: EU Quality of Life Survey 2015



Start with people!!

LIFE



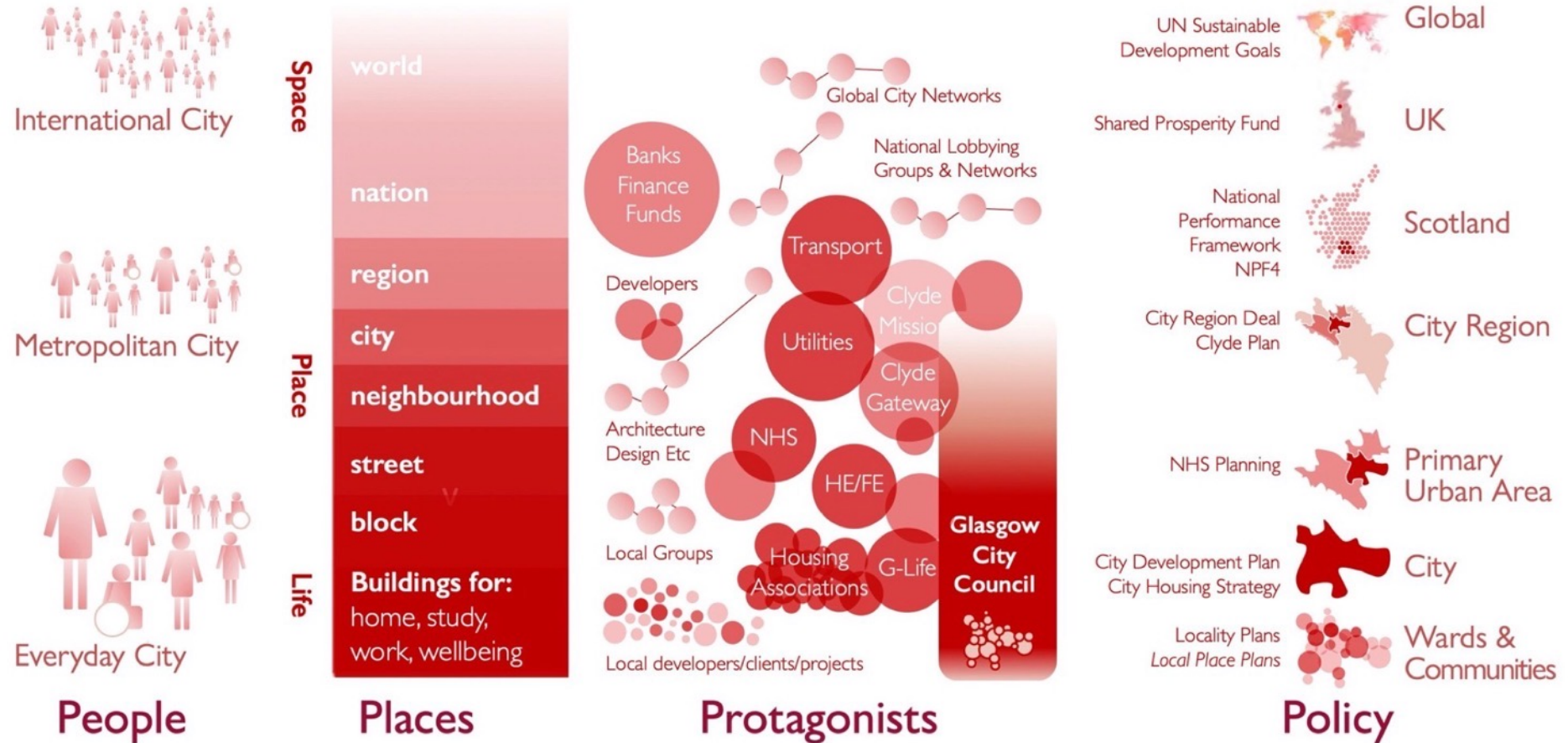
SPACE



BUILDINGS



Investigations in place\ Enquiry & Reflection – a Place Ecosystem?



“Glasgow is at its most alluring, when it dreams of being a better version of itself.” **RORY OLCAYTO**

Place Commission\Glasgow
City Urbanist\Glasgow

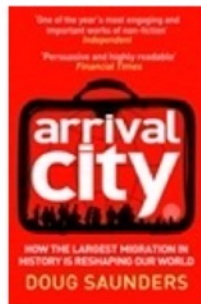
The Cities of Glasgow – looking through different lenses

Place Commission \Glasgow
City Urbanist \Glasgow

International

A reputation based on:

- ✓ Culture
- ✓ Sport
- ✓ Creativity
- ✓ Diversity
- ✓ Living



“Scotland without Glasgow ...would have no worldly dimension.”

“Its very important for cities all around the world to reinvent themselves, and Glasgow is a good example of that” **ZAHA HADID**

Metropolitan

The Bigness of Glasgow

Glasgow Primary Urban Area

Glasgow City Council
East Dunbartonshire Council
East Renfrewshire Council
Renfrewshire Council



Everyday

The Sum of Small Things

OSLOW 2021

are over 630,000 living in Glasgow, entered in 100 people, population of the city like this.



Ethnicity



Age



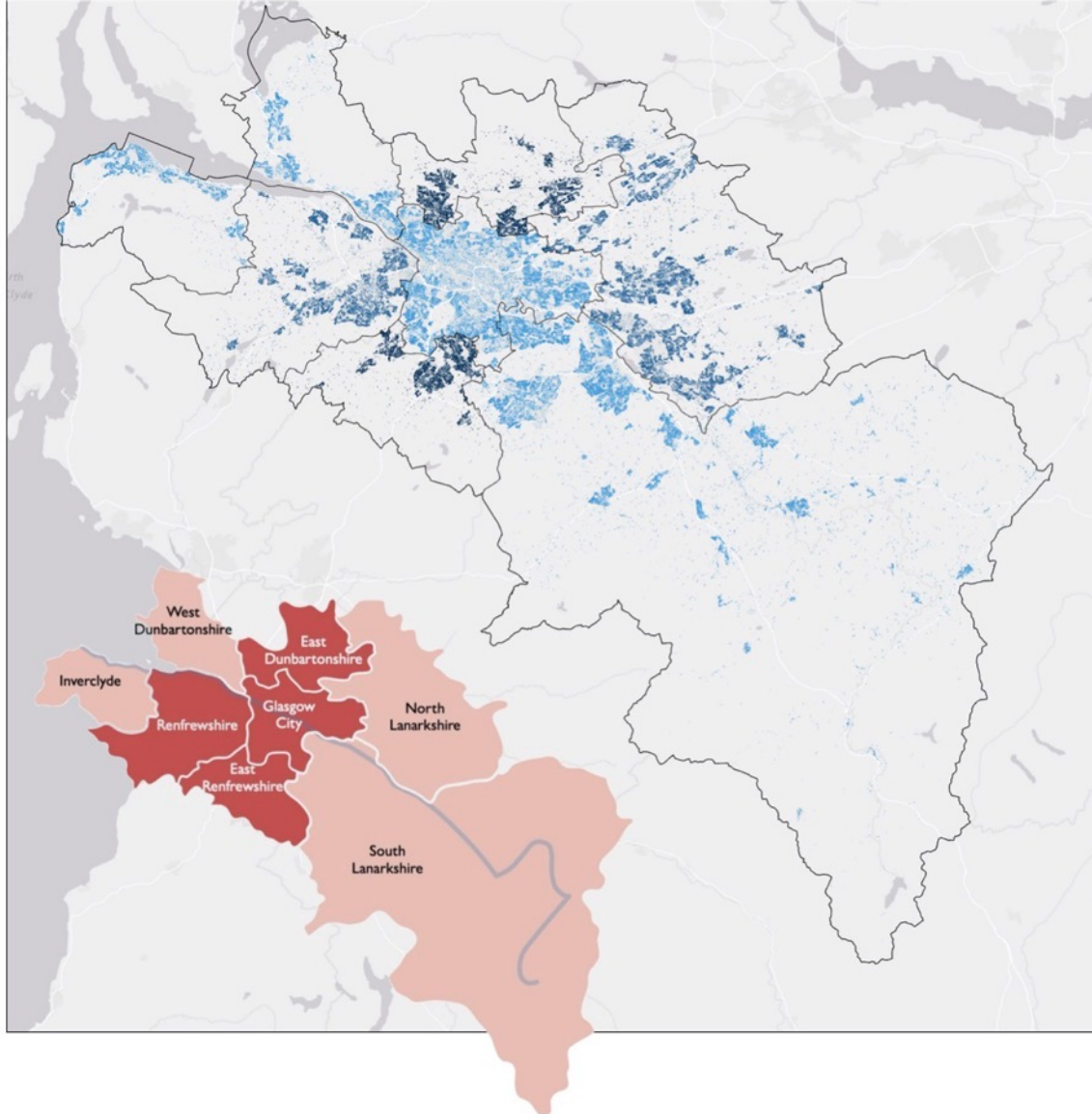
Disability



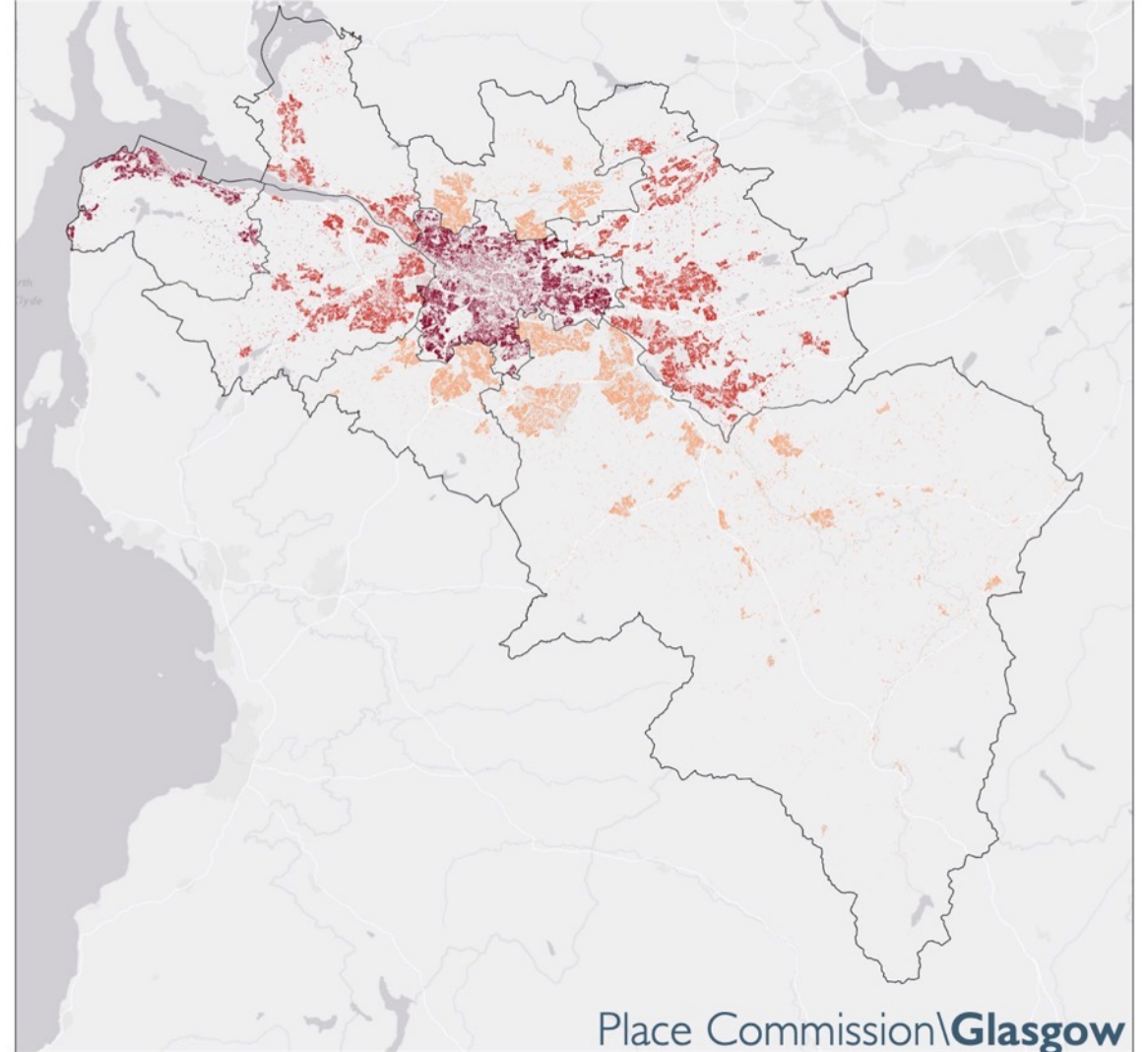
Data sources: National Records of Scotland, Glasgow City Council, Scottish Index of Multiple Deprivation, Understanding Glasgow

The Cities of Glasgow – Issues of Metropolitanity

Glasgow City Region: Geography of Carbon Retrofit: Light = lower



Glasgow City Region: Geography of Disadvantage: Light = lower

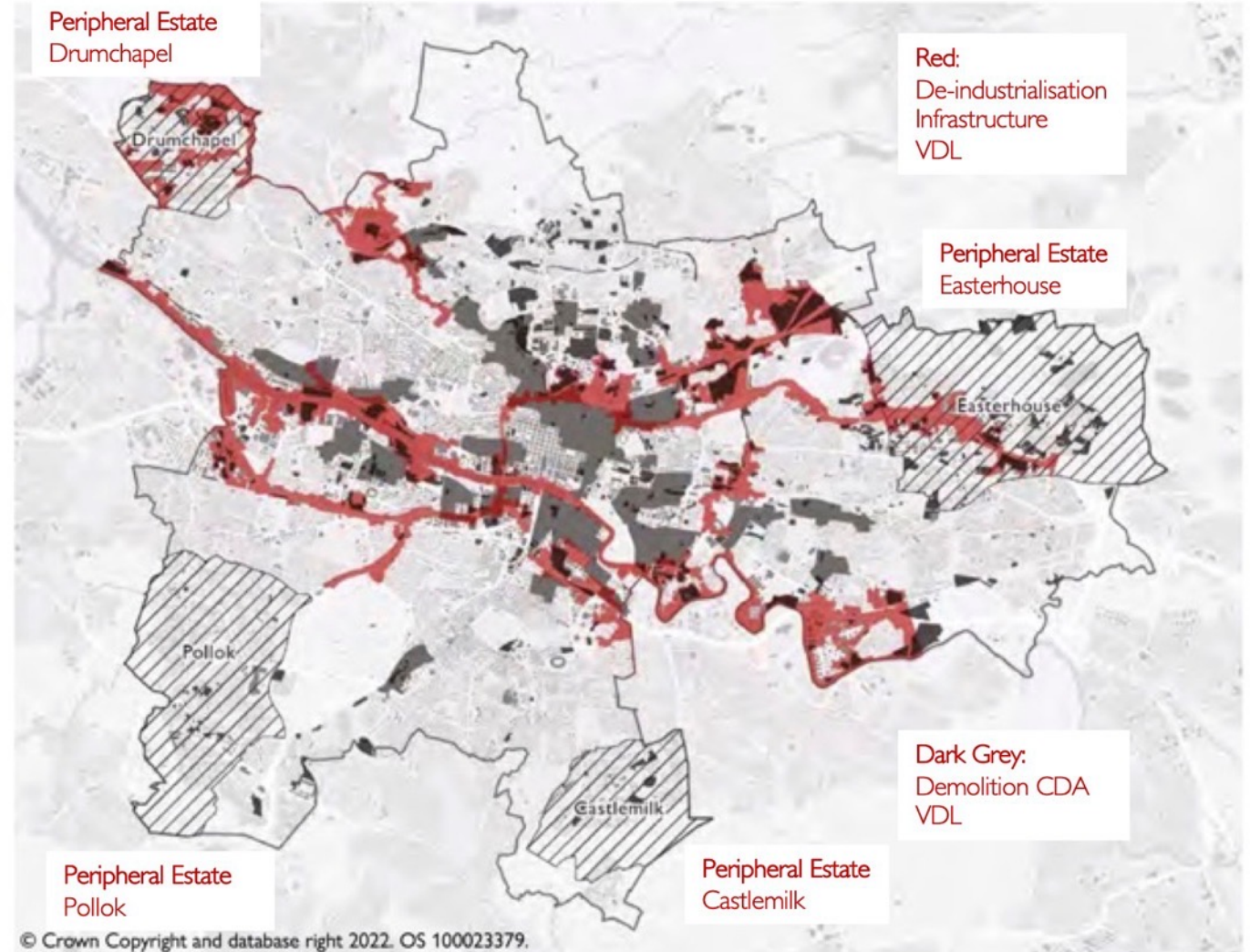


The four eras of modern Glasgow

“

The city of Glasgow fascinates and intrigues – its rise, fall and reinvention, its history and modernity, its reputation as ‘Red Clydeside’ and its powerful architecture all give the city a myth and a legend.”

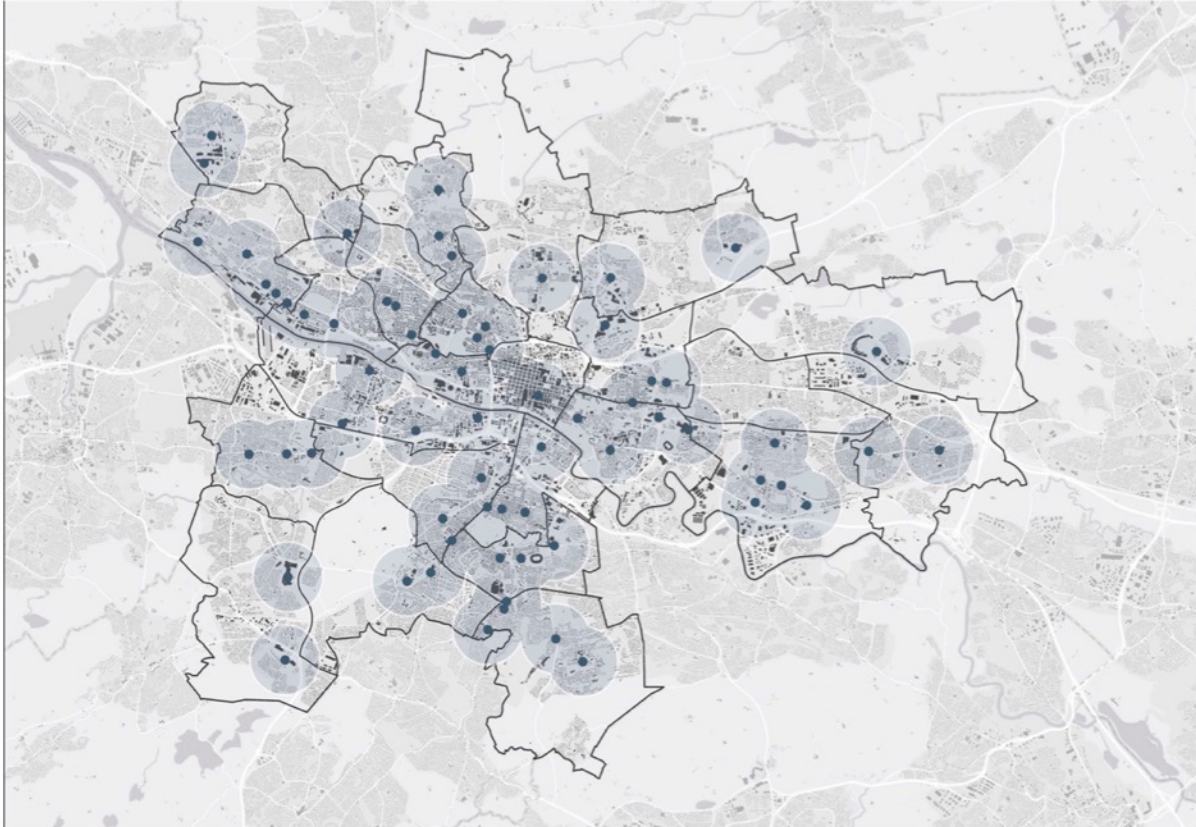
KEITH KINTREA & REBECCA MADGIN (2020)



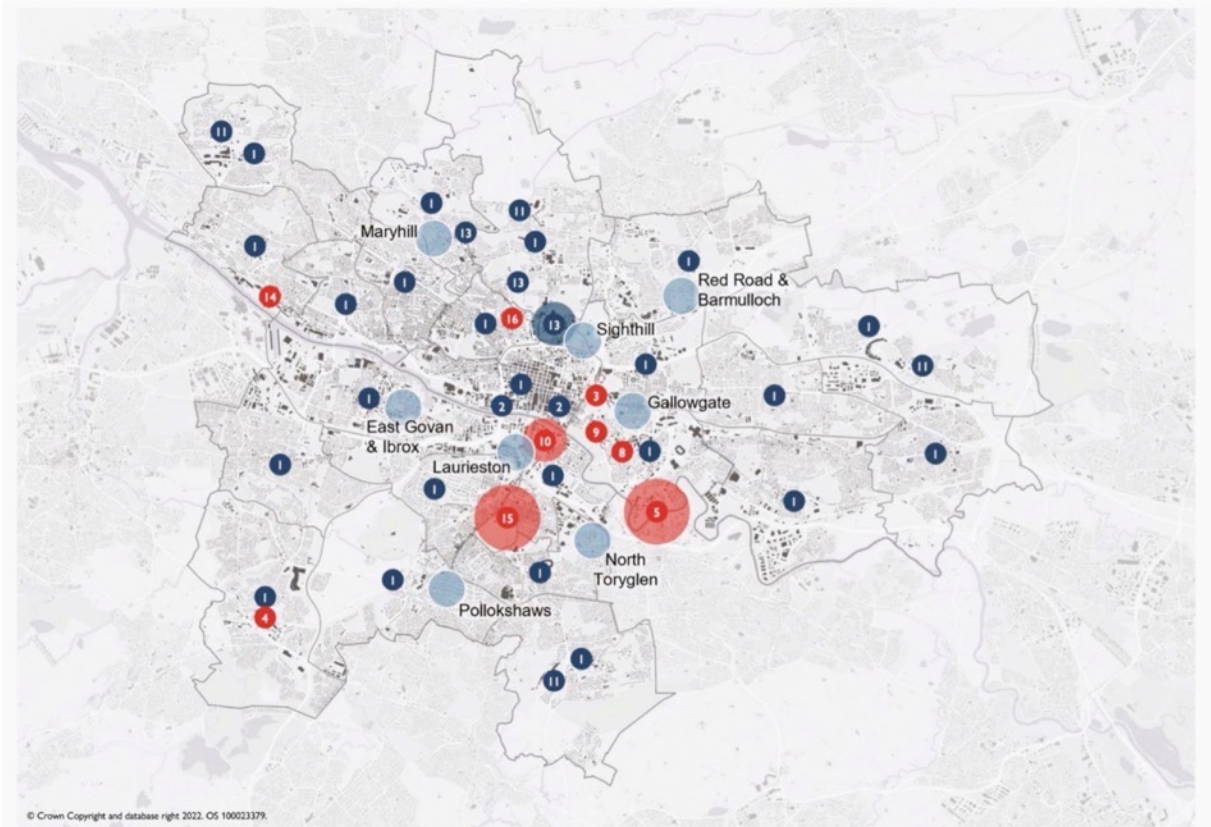
Source:
Glasgow City Council

The map shows the aggregate effect of motorway construction, demolition from comprehensive development areas and the vacant and derelict land from deindustrialisation.

The Places of Glasgow\ of people, for people, by people



Glasgow City: Geography of Neighbourhoods



Glasgow City: Typology of Place

The Importance of 'Place' – quality, value, attachment – OUTCOMES

Place Story\ Place Characteristic	After the Pandemic	AiR	Bell Street Stables	Centre for Civic Innovation	Clyde Climate Forest	Clyde Gateway	Clyde in the Classroom	Glasgow Women's Library	Monteith Row	New Gorbals	On the Edge	Refuweegee	Scottish Canals	Scotstoun Community Garden	South Seeds	What If...?/ Scotland	Woodside Towers
Community Engagement	●	●		●		●	●			●	●	●	●	●		●	●
Community Empowerment		●		●		●		●		●		●			●		
Community Activation	●					●	●			●	●	●	●	●	●	●	
Volunteering					●			●			●	●		●	●	●	
Public Support			●	●	●	●		●	●	●	●			●	●	●	●
Private Initiative	●						●				●		●				
Social Enterprise								●		●		●	●	●	●		
Partnership	●	●	●		●	●			●	●			●	●	●	●	●
Co-creation	●	●		●	●		●					●	●	●	●	●	
Inspirational Intent	●	●	●	●	●		●	●	●	●	●	●			●	●	●
Explicit Values	●	●	●	●	●	●	●	●	●	●		●	●	●	●	●	●
Climate Action	●	●			●		●		●				●		●		●
Wellbeing		●	●	●	●	●		●	●	●		●	●	●		●	
Design Excellence			●	●		●		●	●	●	●		●	●		●	●
Scale	National	Each Ward	Site	City	Region	Area	Region	Site	Site	Area	Area	City	Area	Site	Area	National	Site
Agile Procurement			●			●			●	●			●	●			●
Robust Governance			●		●	●	●	●	●	●			●			●	●
Education & Learning	●	●		●	●		●	●			●	●			●		
Determined Delivery			●		●	●	●	●	●	●	●		●	●			●
Longevity					●	●	●	●		●					●		

Summary of Place Stories & Place Characteristics

The PLACES of Glasgow



1 \AiR\

Artists in Residence is a city-wide project to bring engagement with the arts close to communities across each of the 23 wards in Glasgow.

Place Credentials: Community Engagement, Community Empowerment, Public Enterprise, Inspirational Intent, Education



2 \After the Pandemic\

After the Pandemic uses creativity and community to rethink our environments, reimagine our cities, and redesign our communities to be greener, more vibrant, and more resilient.

Place Credentials: Community Engagement, Community Activation, Climate Action, Partnership, Inspirational Intent



3 \Bell Street Stables\

Bell Street Stables is a positive example of how a historic industrial building can be restored for modern use.

Place Credentials: Excellent Design, Public Enterprise, Climate Action, Procurement



4 \CCI\

The Centre for Civic Innovation (CCI) is a citizen-centred design team within Glasgow City Council responsible for establishing a design-led approach to the understanding of societal shifts and civic experience within the city.

Place Credentials: Community Engagement, Community Empowerment, Public Enterprise, Excellent Design, co-creation, Education



5 \Clyde Gateway\

Clyde Gateway is an urban regeneration Company established to deliver significant social, economic, and physical change across East Glasgow and South Lanarkshire.

Place Credentials: Community Engagement, Excellent Design, Public Enterprise, Governance, Partnership, Procurement, Delivery, Longevity



6 \Clyde in the Classroom\

Clyde in the Classroom is a hands-on project which uses the life history of a native Scottish species, the brown trout, to promote awareness of river ecology among young people across the River Clyde catchment.

Place Credentials: Community Activation, Climate Action, Education, Delivery



7 \Clyde Climate Forest\

The Clyde Climate Forest is a project that aims to plant 18 million trees across Glasgow City Region and has the potential to benefit quality of life, quality of place, and wildlife habitats.

Place Credentials: Community Activation, Climate Action, Education, Delivery



8 \Glasgow Women's Library\

The Glasgow Women's Library is a leading charity and social enterprise that supports thousands of women across Scotland every year by coordinating and hosting a range of public events, services, cultural programmes, and learning opportunities.

Place Credentials: Community Empowerment, Public Support, Explicit Values, Inspirational Intent, Education

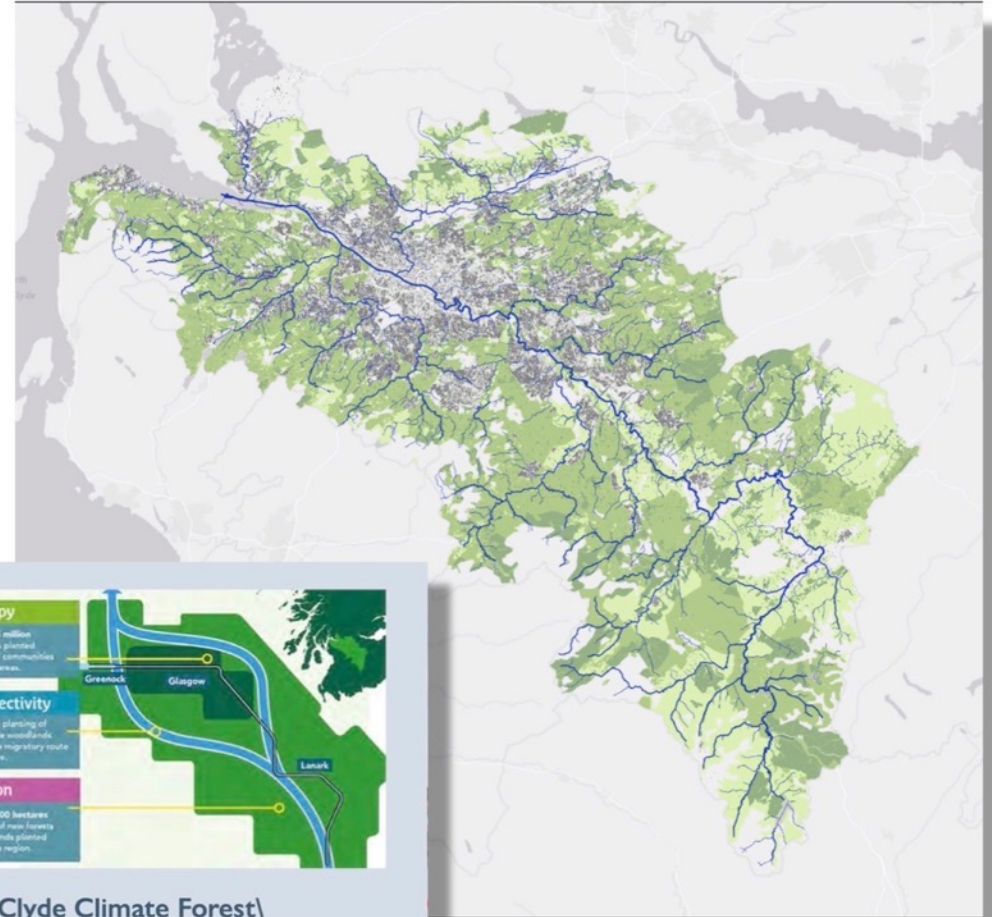
The Places of Glasgow \ place synergies \



6 \Clyde in the Classroom\

Clyde in the Classroom is a hands-on project which uses the life history of a native Scottish species, the brown trout, to promote awareness of river ecology among young people across the River Clyde catchment.

Place Credentials: Community Activation, Climate Action, Education, Delivery

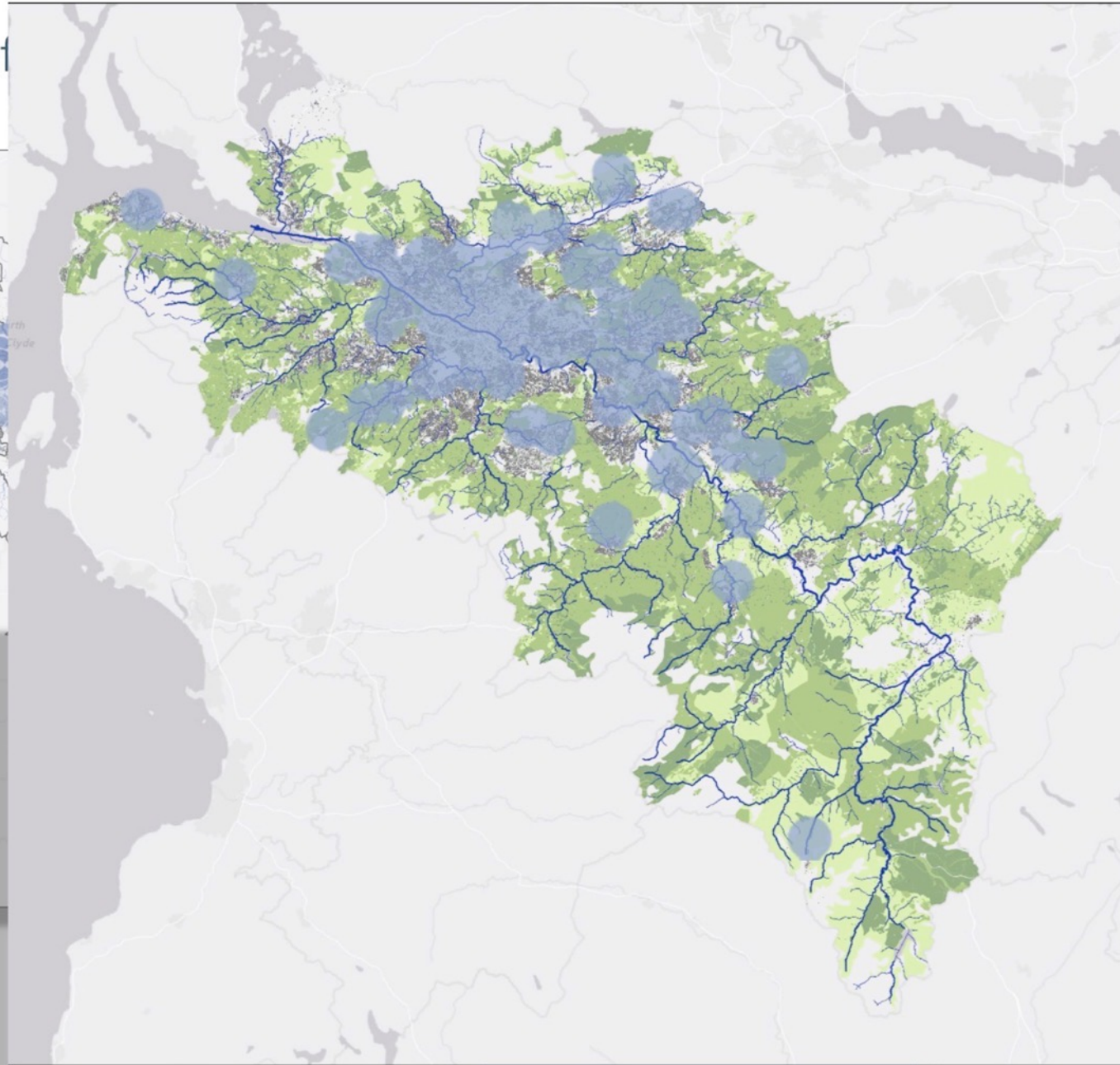
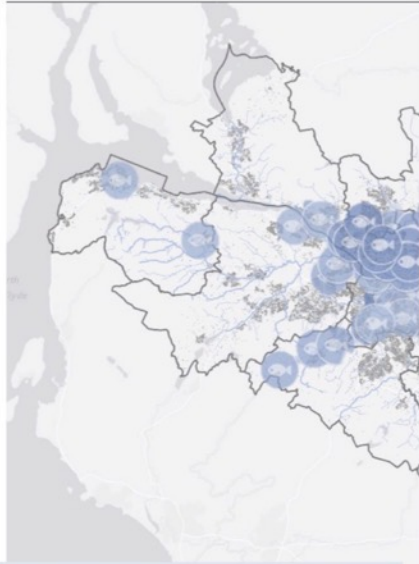


7 \Clyde Climate Forest\

The Clyde Climate Forest is a project that aims to plant 18 million trees across Glasgow City Region and has the potential to benefit quality of life, quality of place, and wildlife habitats.

Place Credentials: Community Activation, Climate Action, Education, Delivery

The Places of



6 \Clyde in the Classroom\

Clyde in the Classroom is a hands-on project which uses the life history of a native Scottish species, the brown trout, to promote awareness of river ecology among young people across the River Clyde catchment.

Place Credentials: Community Activation, Climate Action, Education, Delivery

The Places of Glasgow\ place synergies\



5 \Clyde Gateway\

Clyde Gateway is an urban regeneration Company established to deliver significant social, economic, and physical change across East Glasgow and South Lanarkshire.

Place Credentials: Community Engagement, Excellent Design, Public Enterprise, Governance, Partnership, Procurement, Delivery, Longevity



10 \New Gorbals\

New Gorbals is regarded as an exemplar of masterplan-led area regeneration. New Gorbals Housing Association, established by residents in 1989, has played a pivotal role in the transformative change.

Place Credentials: Community Empowerment, Community Activation, Governance, Partnership, Procurement, Longevity

Making sense of complex systems ...

... in Your City



... and in Your Neighbourhood

“Cities are where the Climate Battle will largely be won or lost”

UN Secretary-General

“We believe the best way to tackle climate change is through reducing energy use and waste and using local spaces to grow food that bring immediate practical benefits to local people.”

*SouthSeeds, Social Entrepreneur
Community Climate Activist, Glasgow*



Cities have the capability of providing something for everybody, only because, and only when, they are created by everybody.

— *Jane Jacobs* —