

THE ETHICAL CITY

STAGE FIVE 24/25

MACKINTOSH SCHOOL
OF ARCHITECTURE
THE GLASGOW
SCHOOL OF ART

FINAL DESIGN THESIS

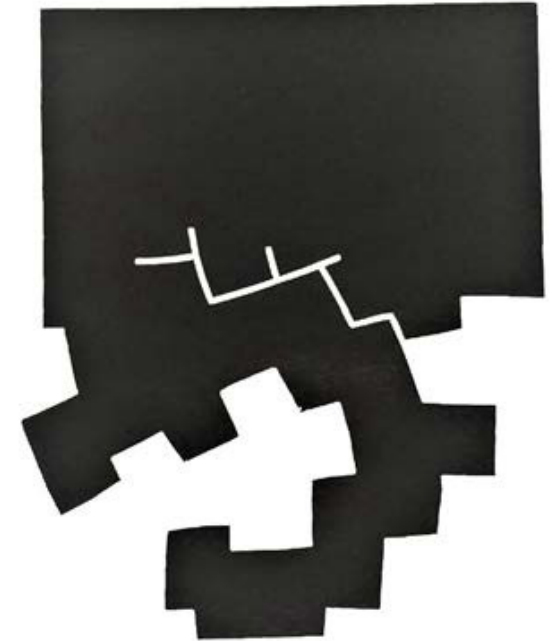
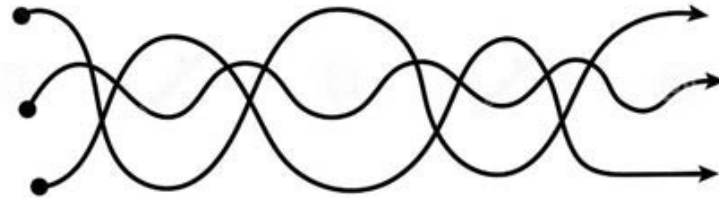
“Architecture’s meaning lies in the Intertwining of its site, its phenomena, it’s idea. Forming a concept, defines a field of enquiry, a territory of research for investigation that helps form meaning. The idea is the force that drives the design. The field of Inquiry sets the focus and the limit and, most importantly, the responsibility of work in rigour and depth”

Steven Holl
1996

STAGE FIVE 24/25



LINE OF ENQUIRY



DESIGN DRIVERS

CONTEXT

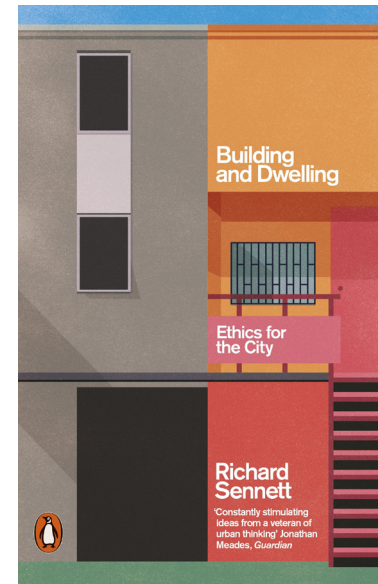
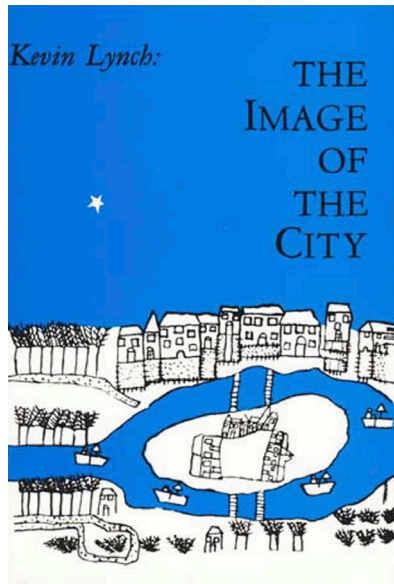
PROGRAMME

TECHNOLOGY



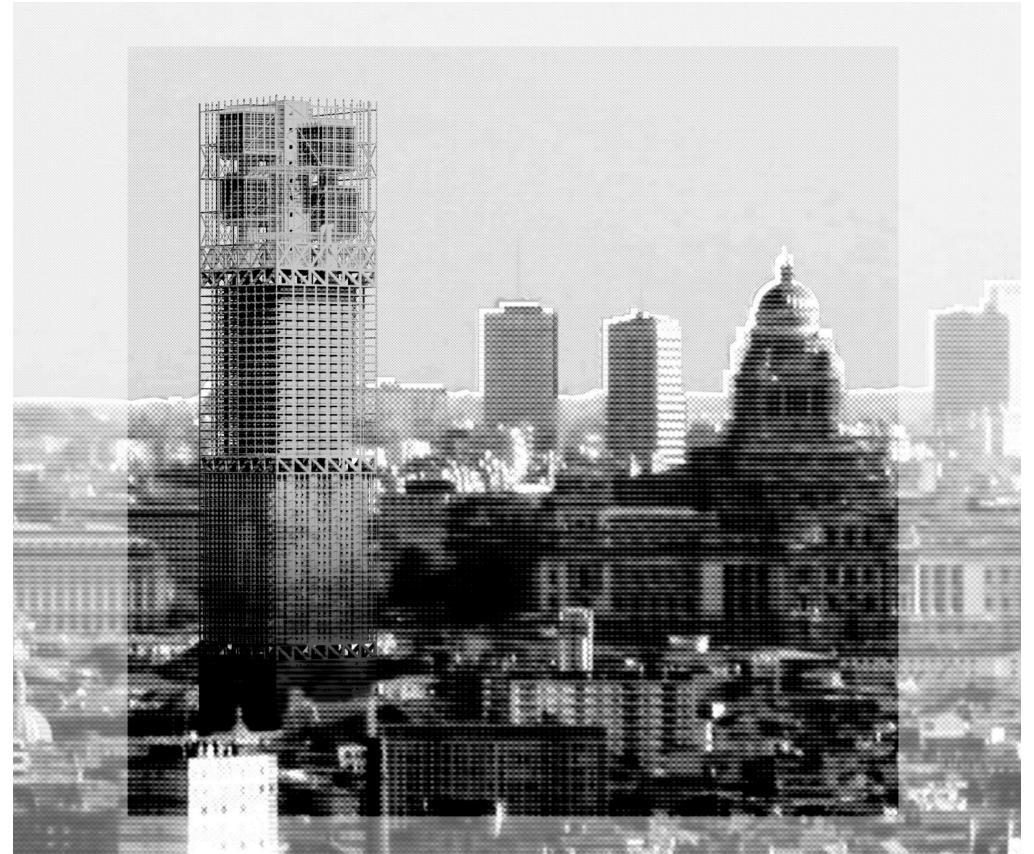
STAGE FIVE 24/25

READING LIST



THE ETHICAL CITY

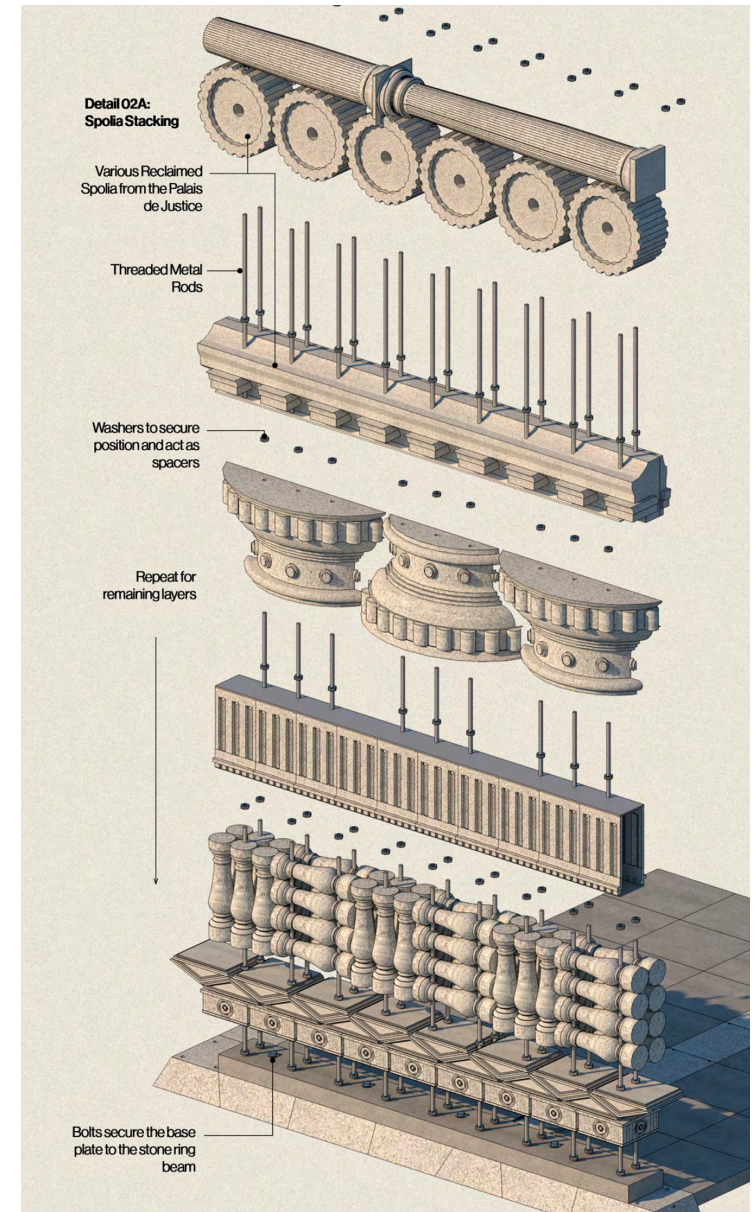
With the ongoing threat of pandemics, artificial intelligence, food + energy insecurity, the Climate Emergency and political upheaval across the globe, we are asking the question, what does this mean for the current city and the future of cities? Ethical decision making and processes relating to the planet, society and the choices that we make can no longer be separated from architectural design.



THE ETHICAL CITY

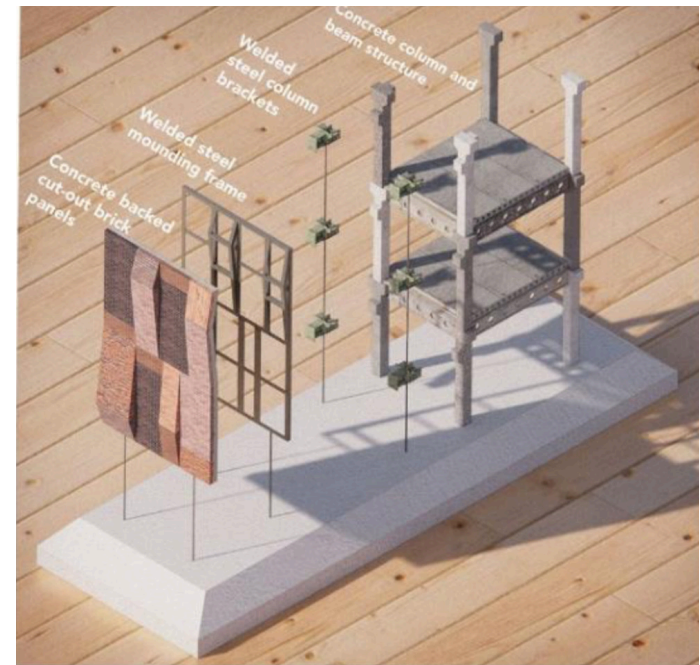
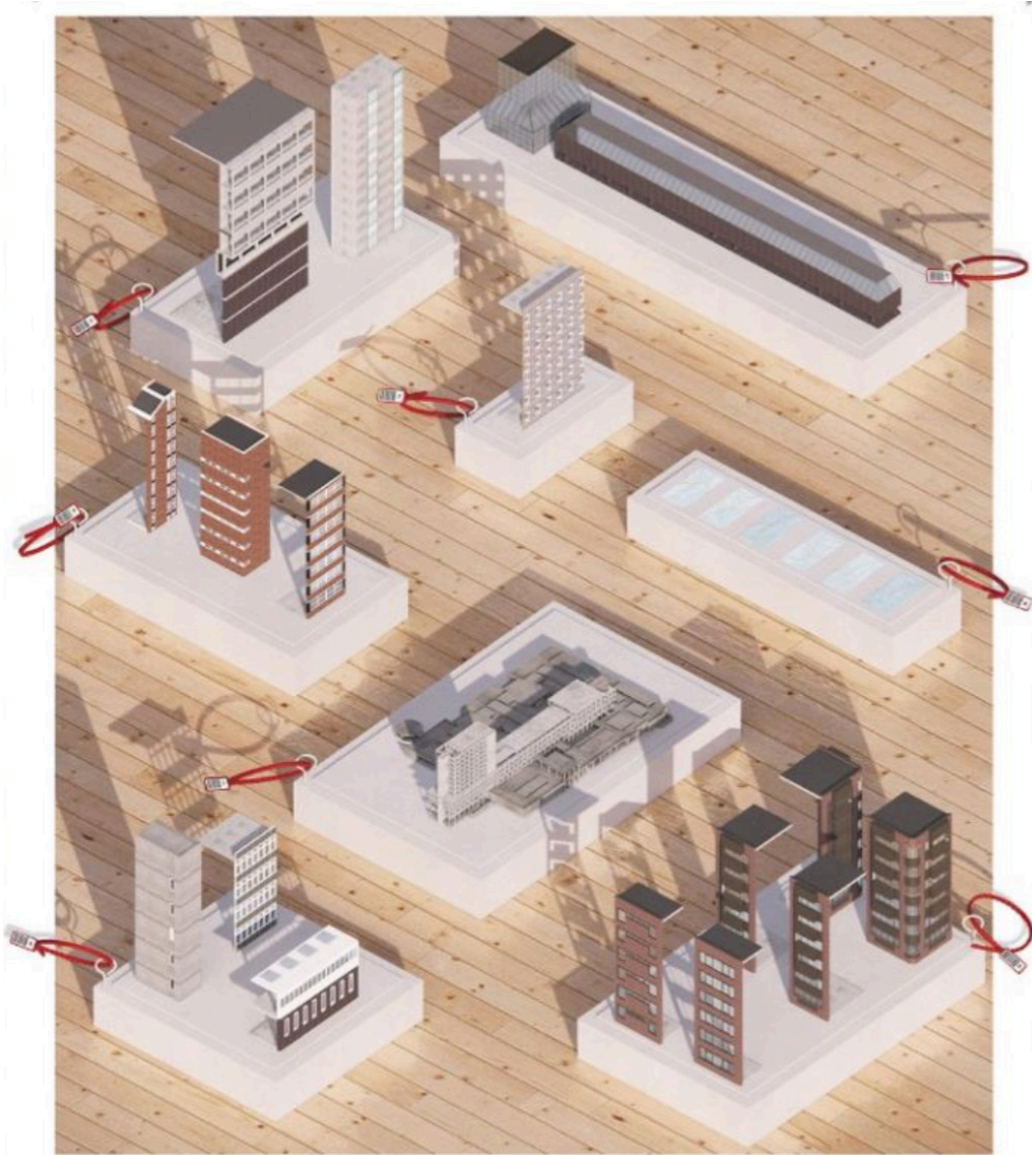
POWER
WASTE
MATERIALS
RESOURCE
CARE
CULTURE
INDUSTRY
EDUCATION
ECOLOGY

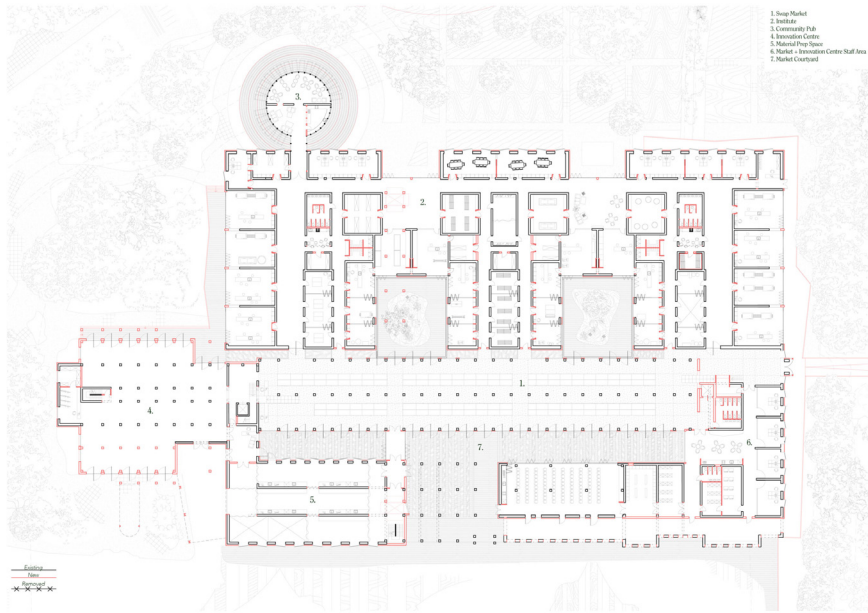
STAGE FIVE 24/25

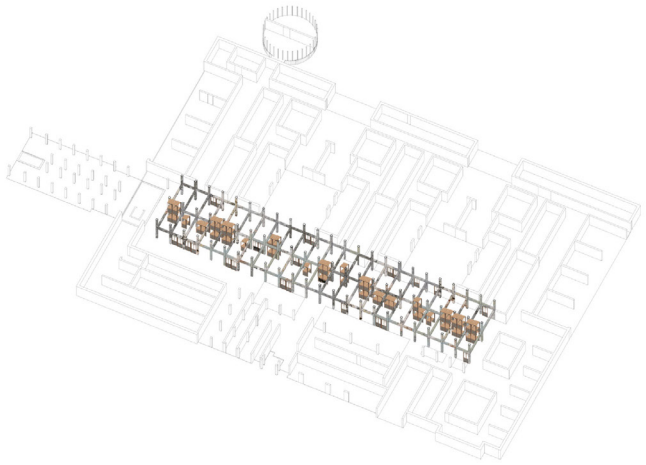


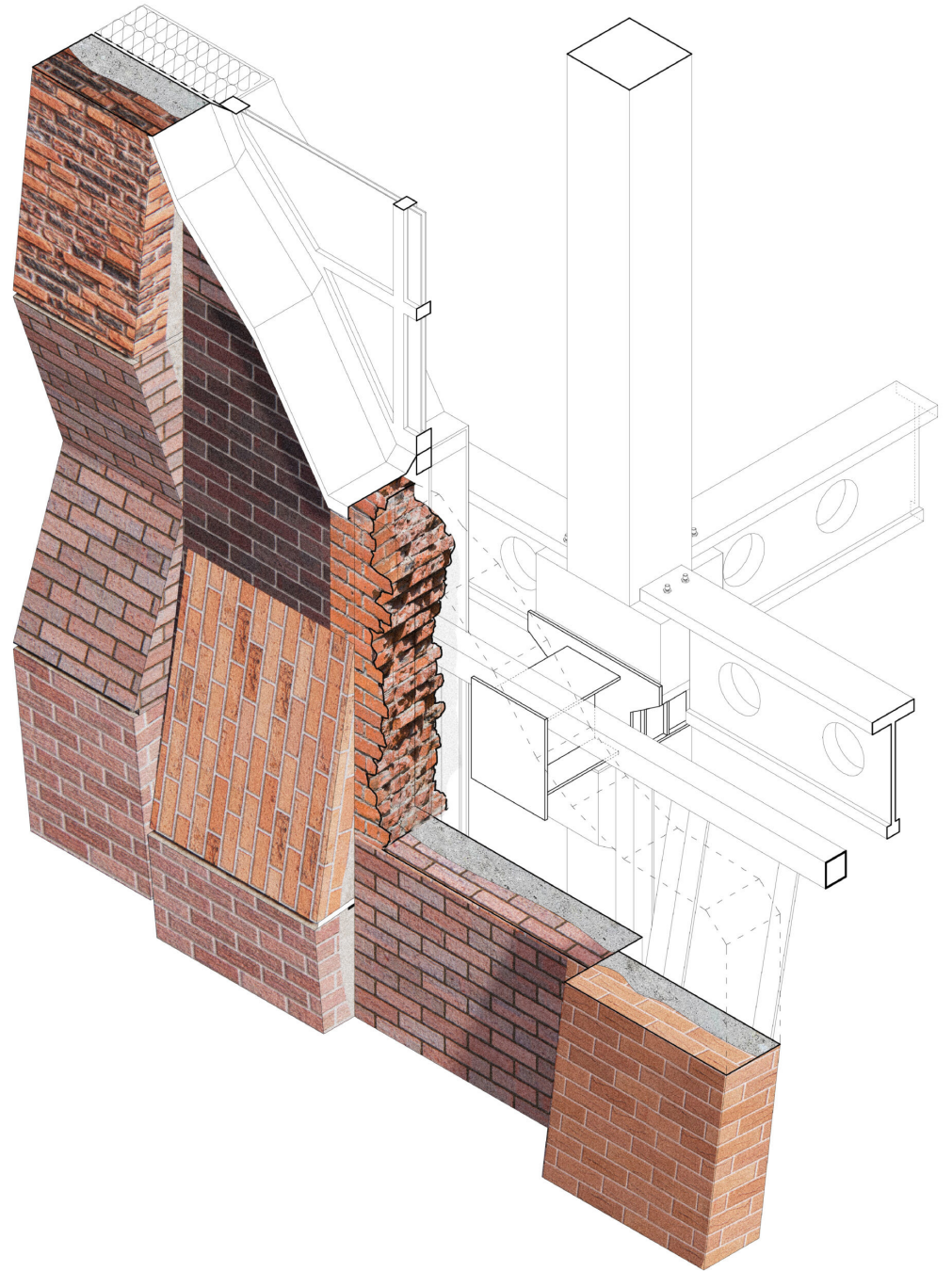
LANDFILL

Karlis Kukainis









THE FOUNDRY

Linda Ledina

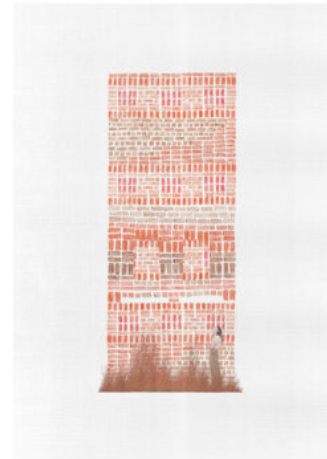
BRUSSELS *22/23*



Deterioration

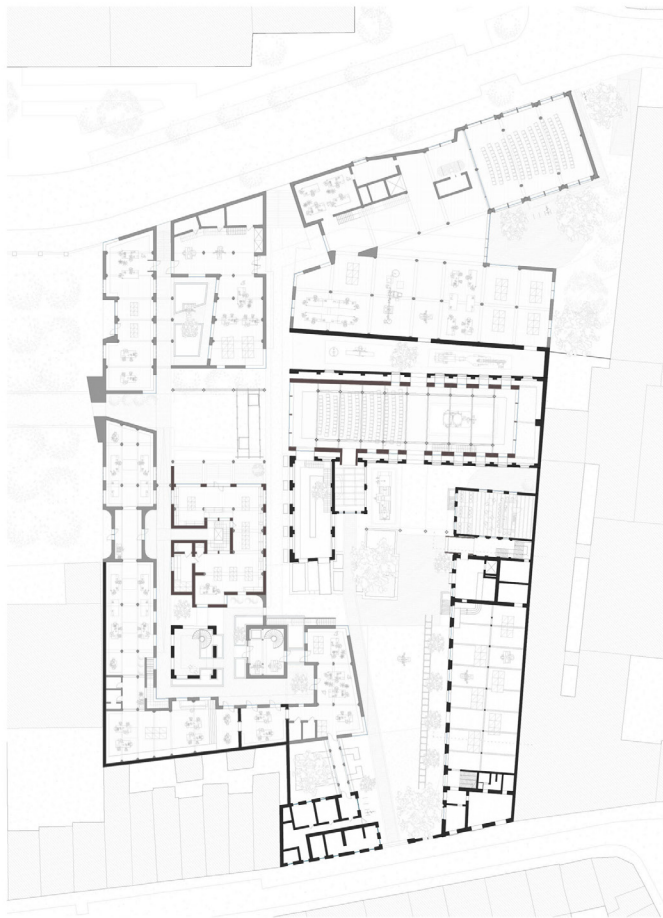


Healing



Stacking

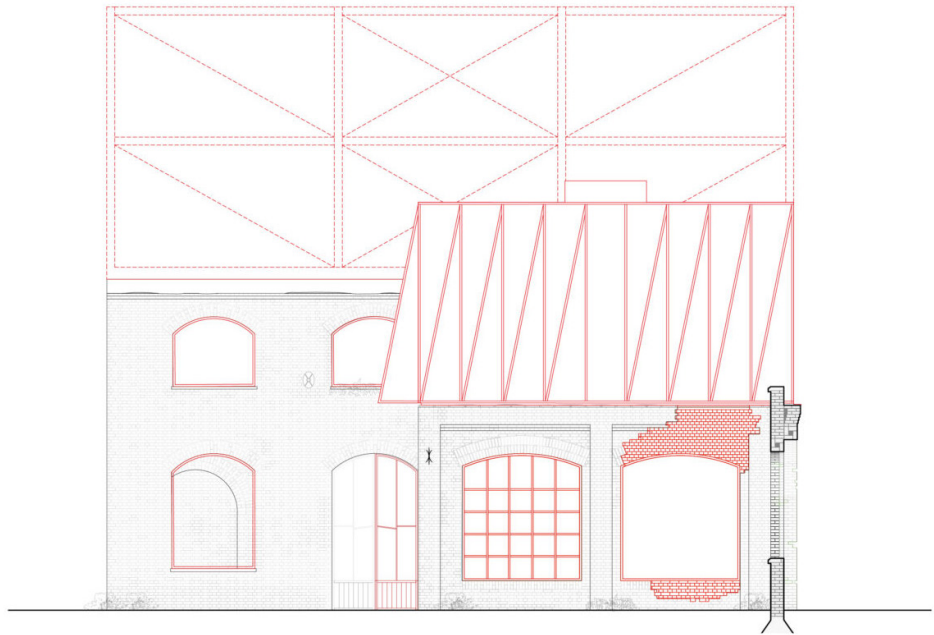




- Existing structures
- New brick structures
- New Bronze structures

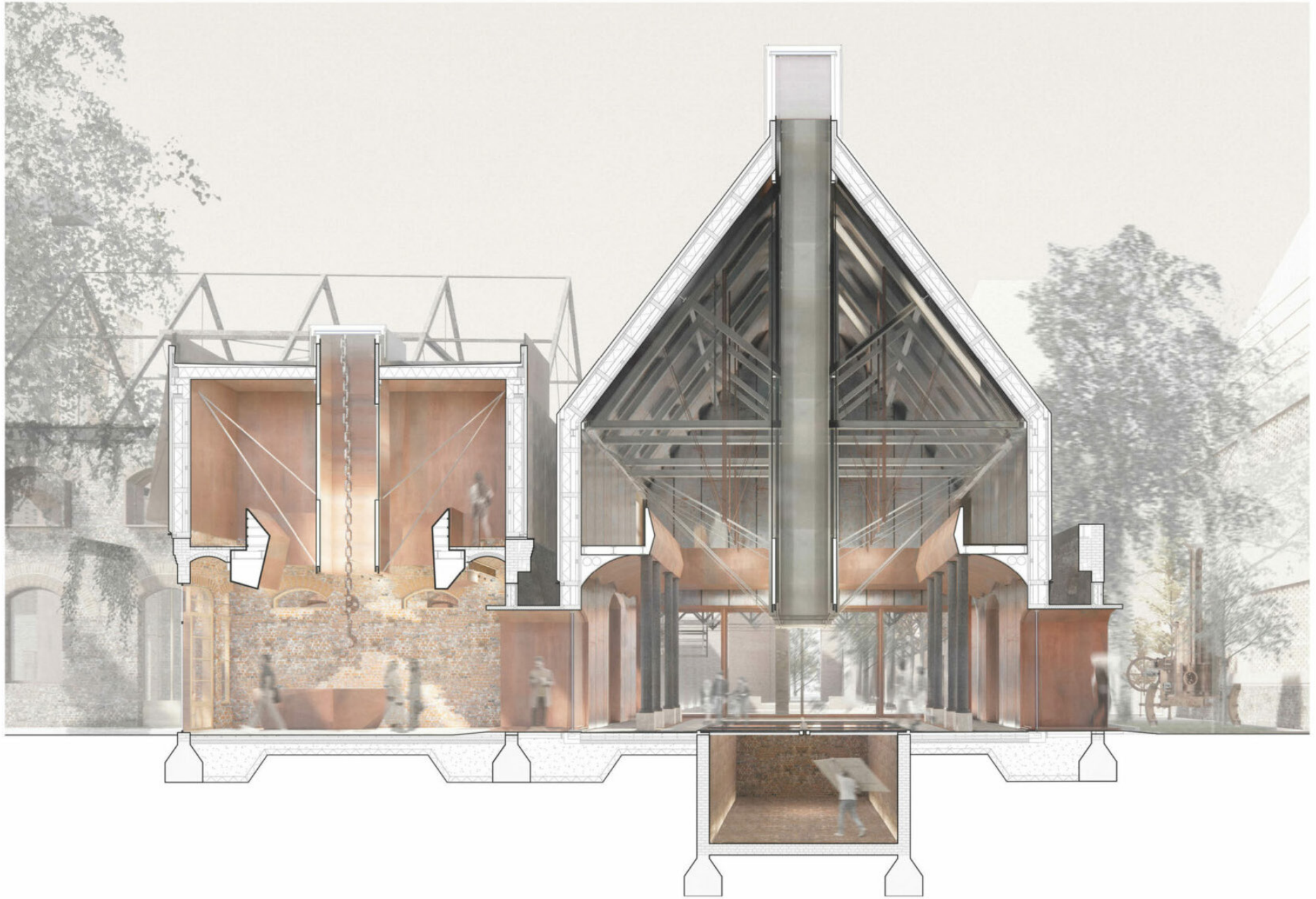
Ground floor plan
1:200





- Existing structures
- New structures

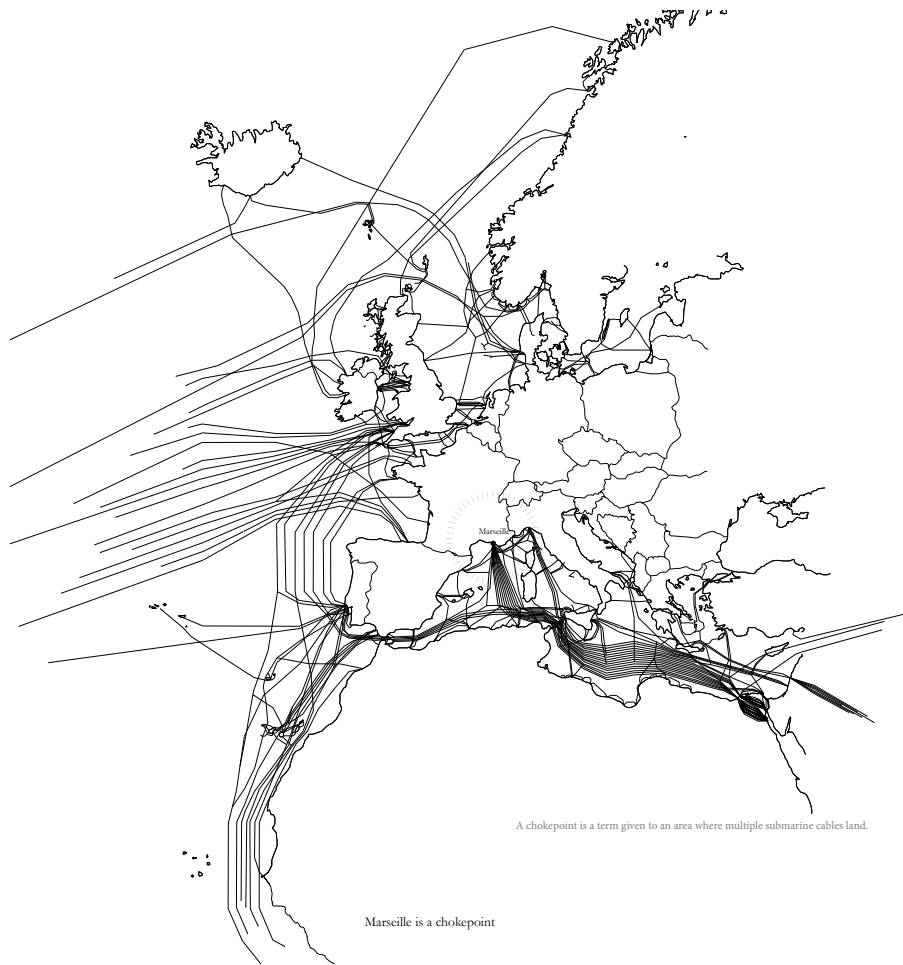
Bronze entrance intervention
Elevation AB 1:100



DECODE

Euan Clarke

MARSEILLE 23/24

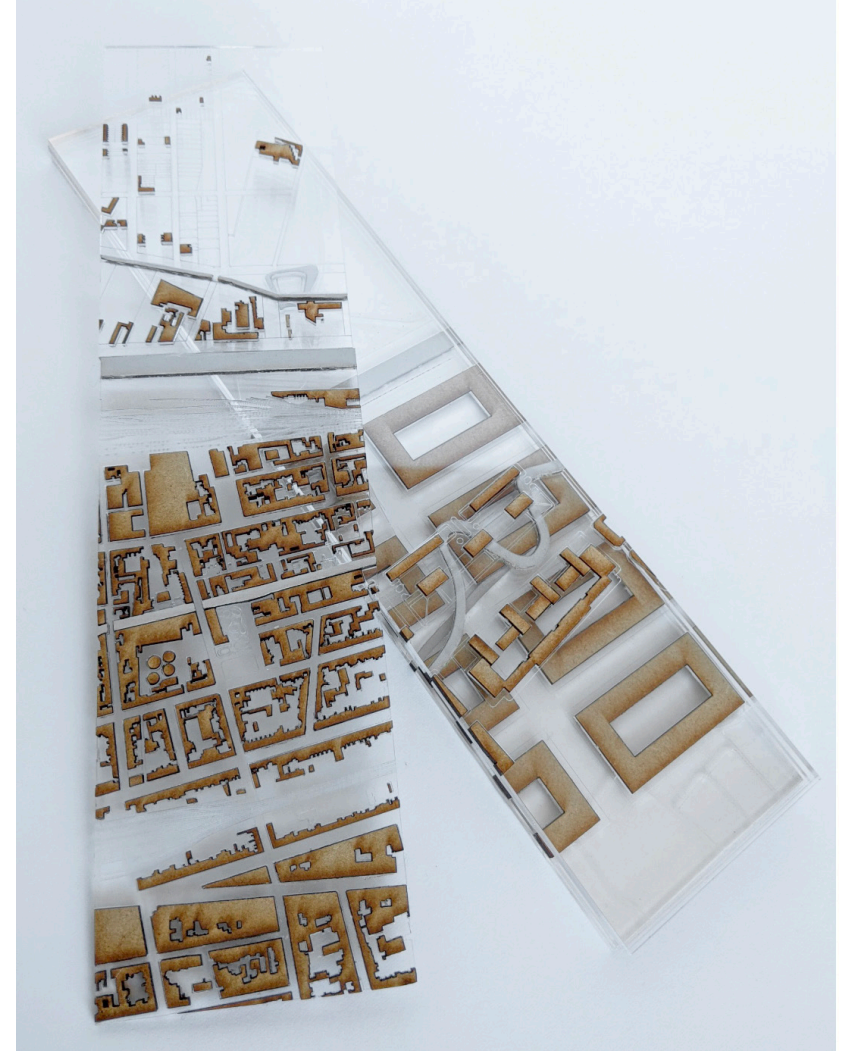








RESEARCH INFORMING DESIGN



STAGE FIVE 24/25

STUDIO

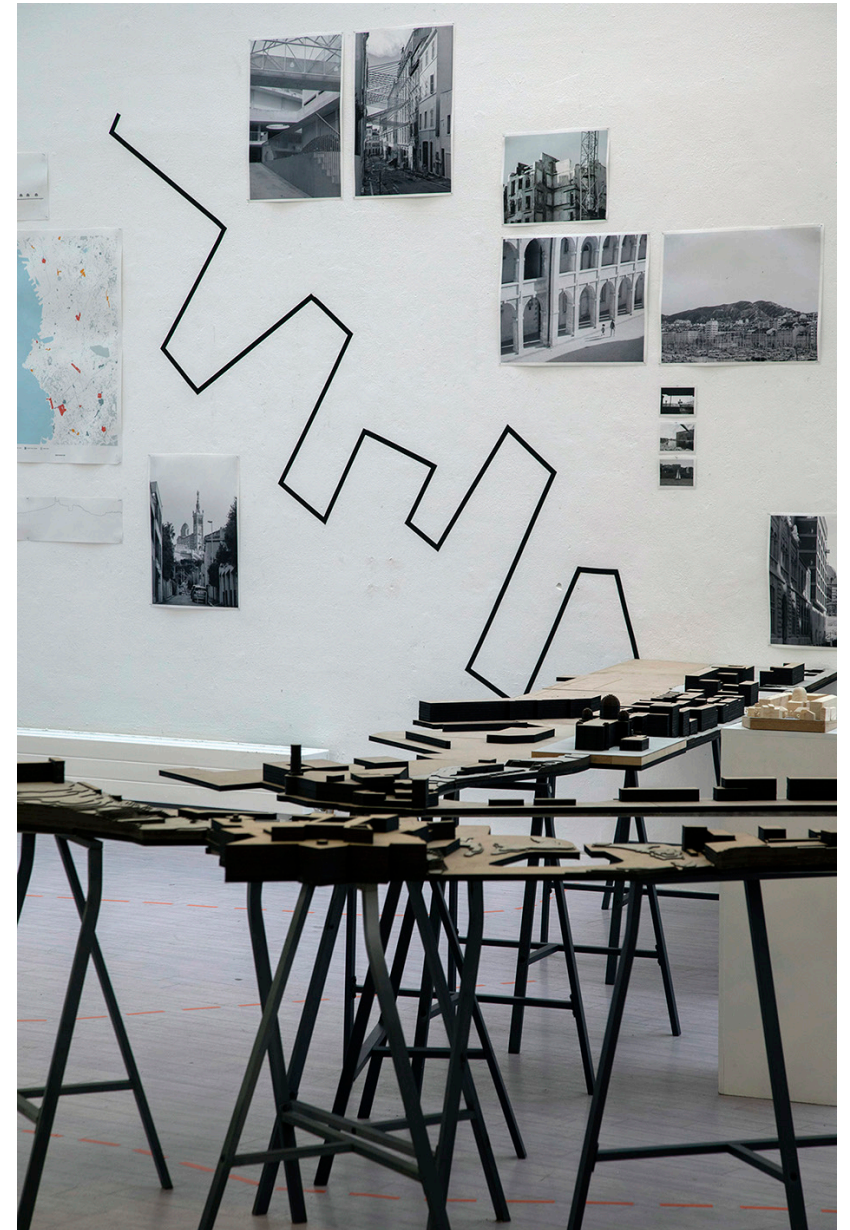


STAGE FIVE 24/25

TUTORIALS



CITY EXHIBITION



EXHIBITION



STAGE FIVE 24/25

THESIS FORUM



PORTO

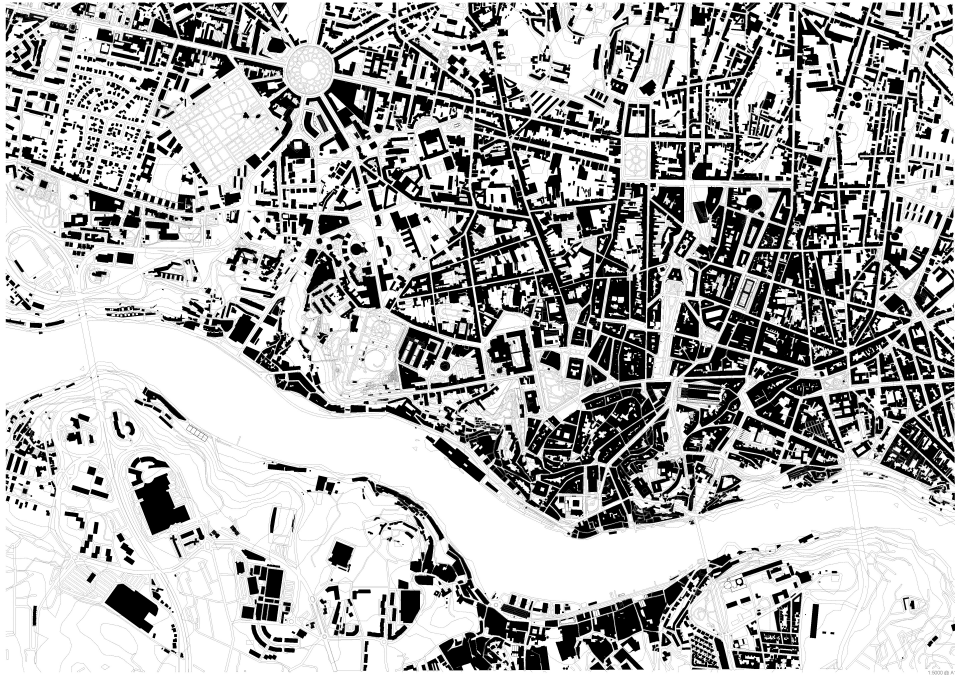


STAGE FIVE 24/25

MACKINTOSH SCHOOL
OF ARCHITECTURE
THE GLASGOW
SCHOOL OF ART

GLASGOW PORTO

TRANSATLANTIC
ARRIVAL/DEPARTURE
TOPOGRAPHY
PORT
WATER
SECOND CITY
RIVER
CULTURE
RESISTANCE
WEST
ATLANTIC
CELTIC (GAELIC/GALLAECIAN)

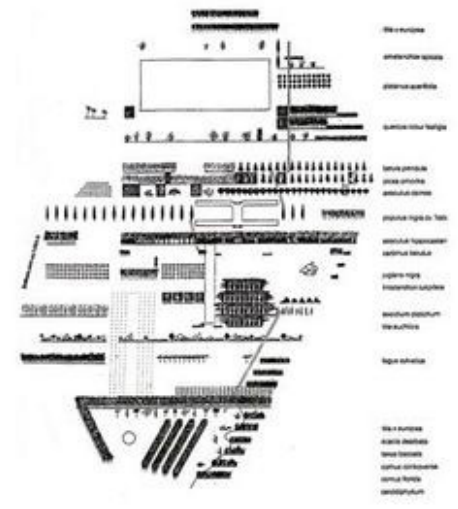
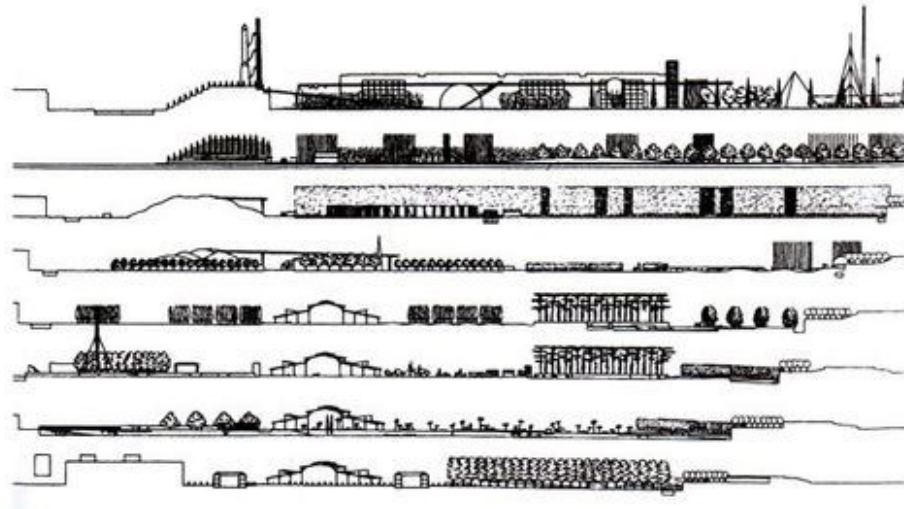


PORTO



GLASGOW

A LINE THROUGH THE CITY



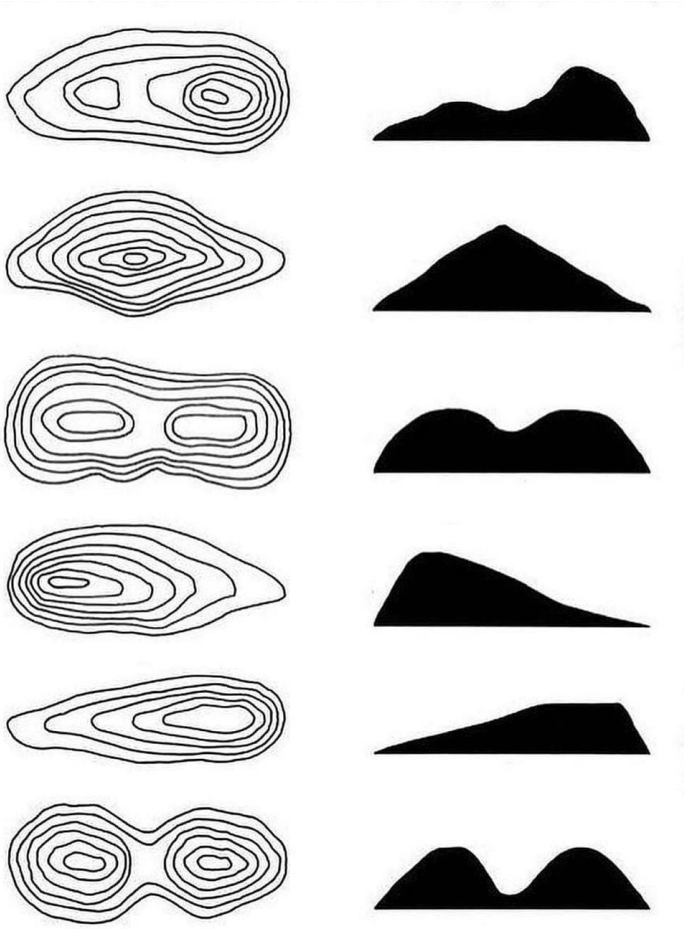
LINE

***RIVER EDGE
TRIBUTARY
STREAM
PIPE***



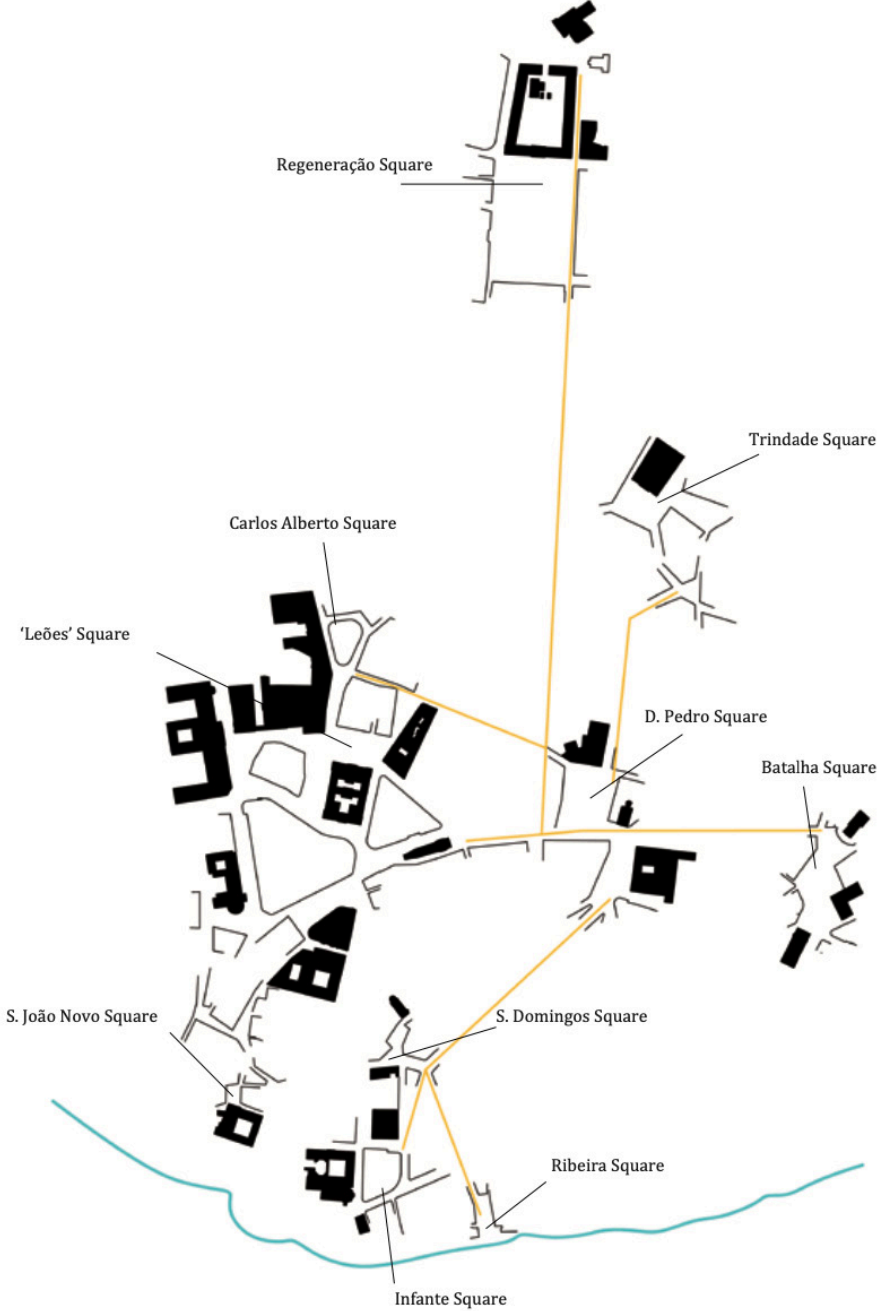
LINE

*TOPOGRAPHIC
ROUTE
PATH
CONTOUR*



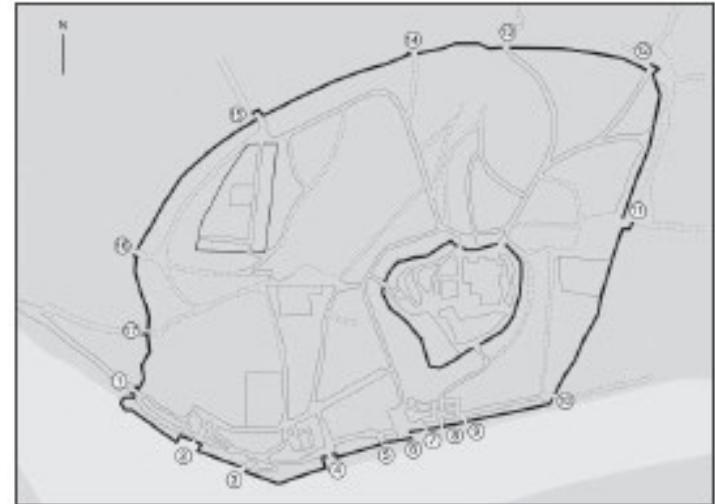
LINE

**CONNECTION
CIVIC
DESTINATION
CHANNEL**



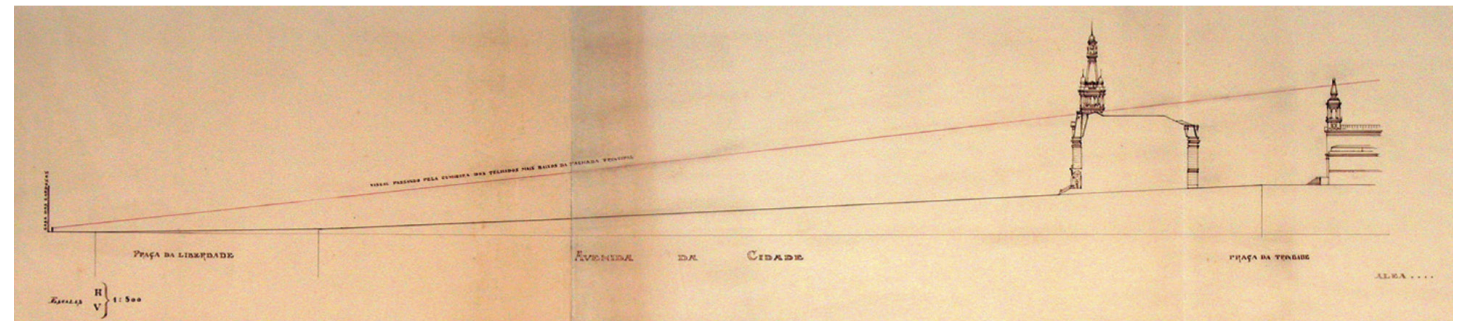
LINE

***HISTORIC
WALL
DEFENCE
PHYSICAL***



LINE

**SIGHT
MARKERS
PILGRIMAGE
HORIZON**



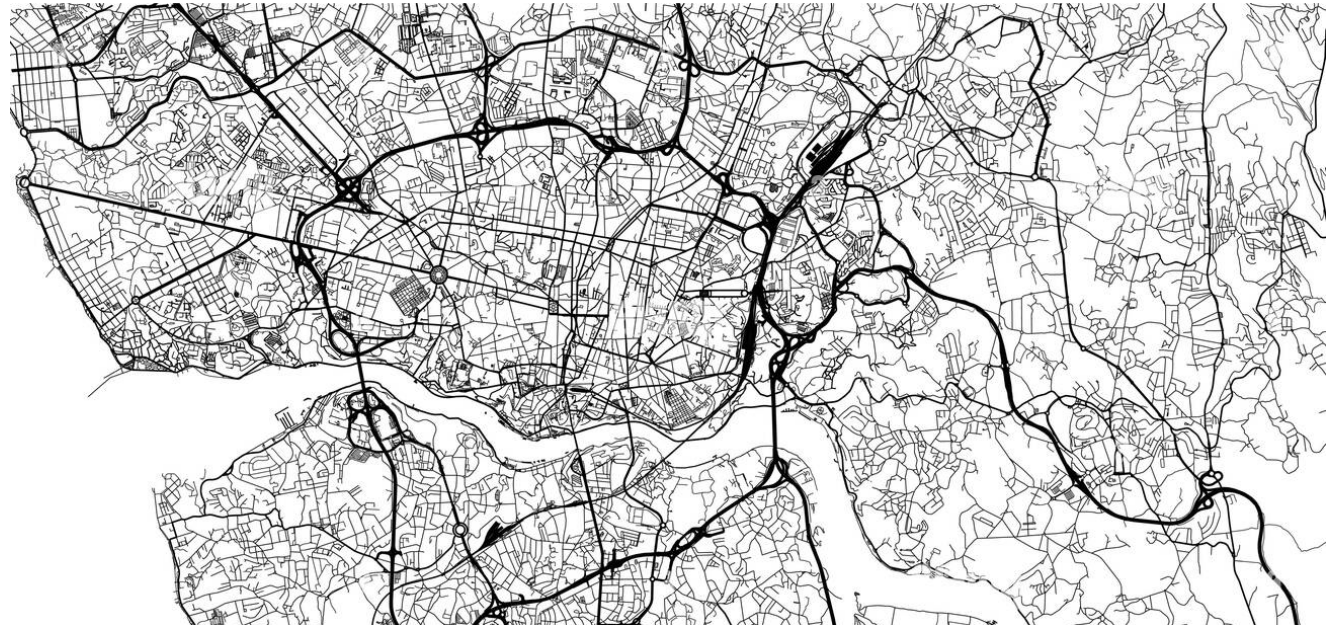
LINE

*AXIS
BOULEVARD
STREET
EDGE*

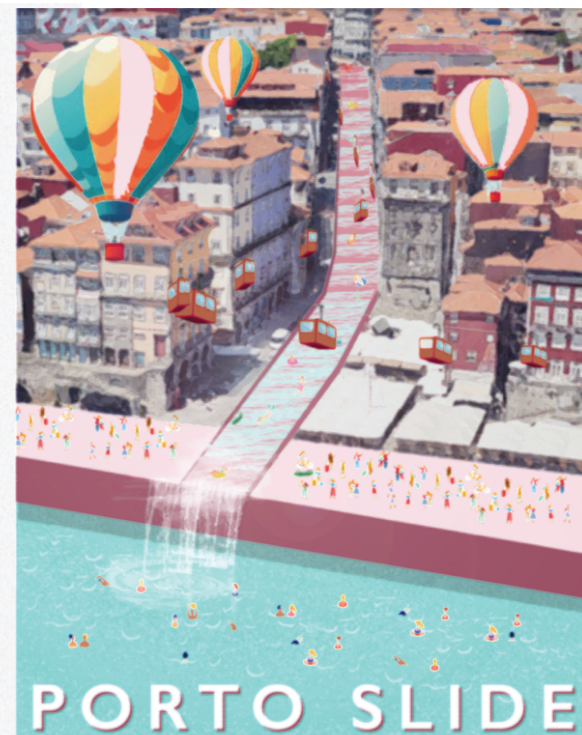
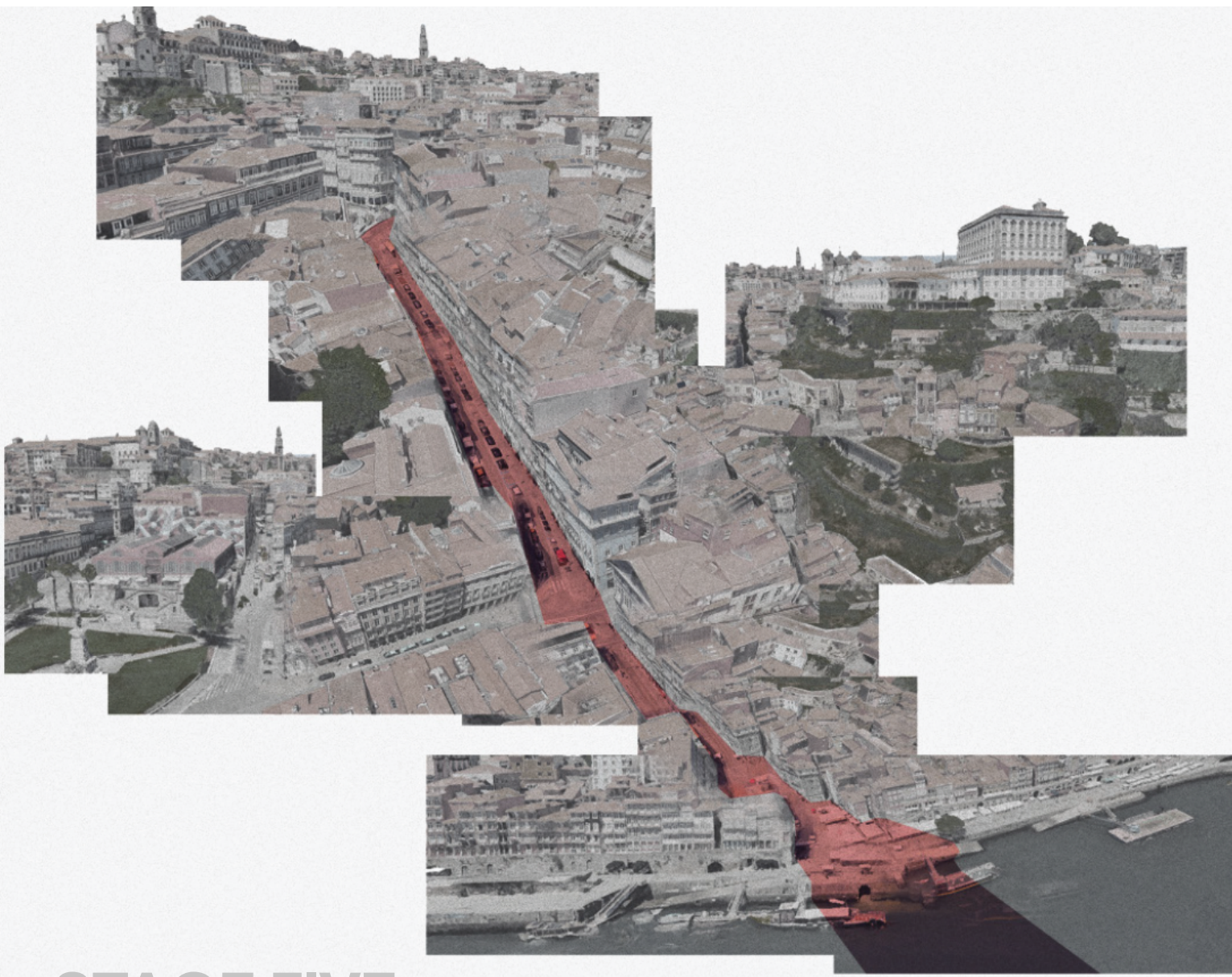


LINE

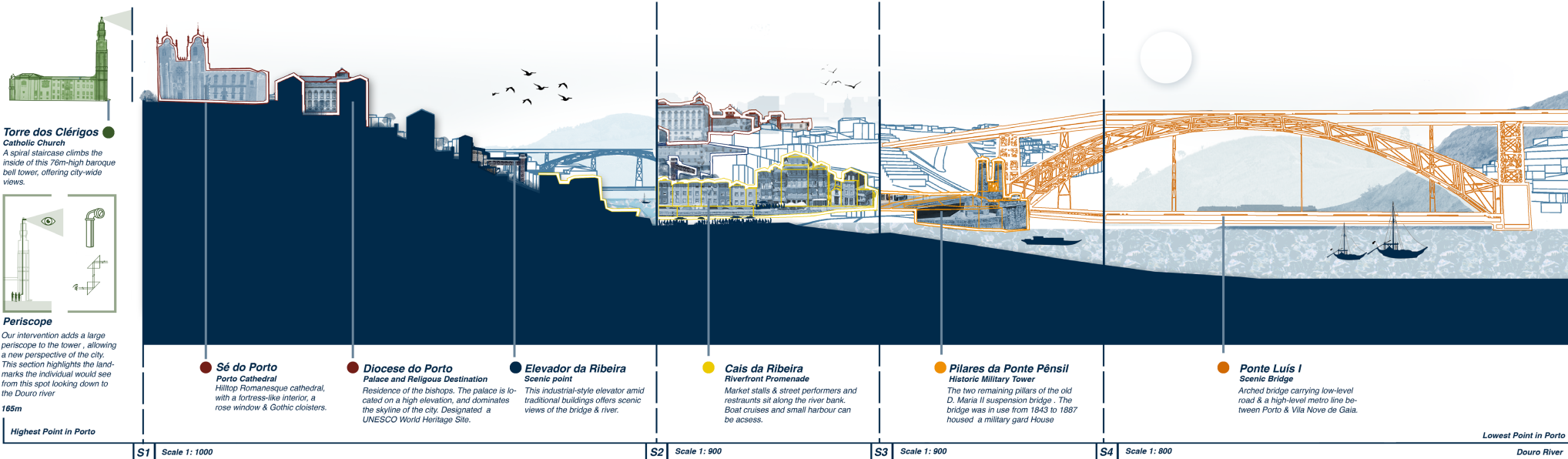
***INFRASTRUCTURE
ROAD
BRIDGE
BORDER***



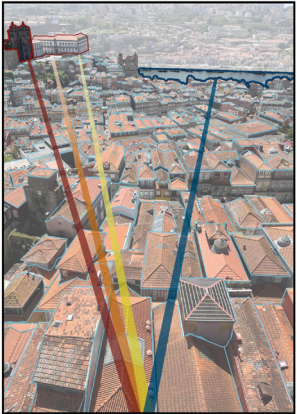
PORTO SLIDE



PERISCOPE

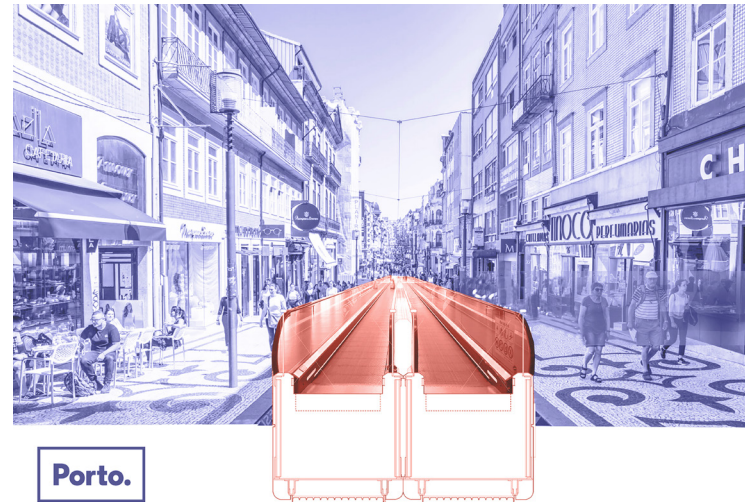
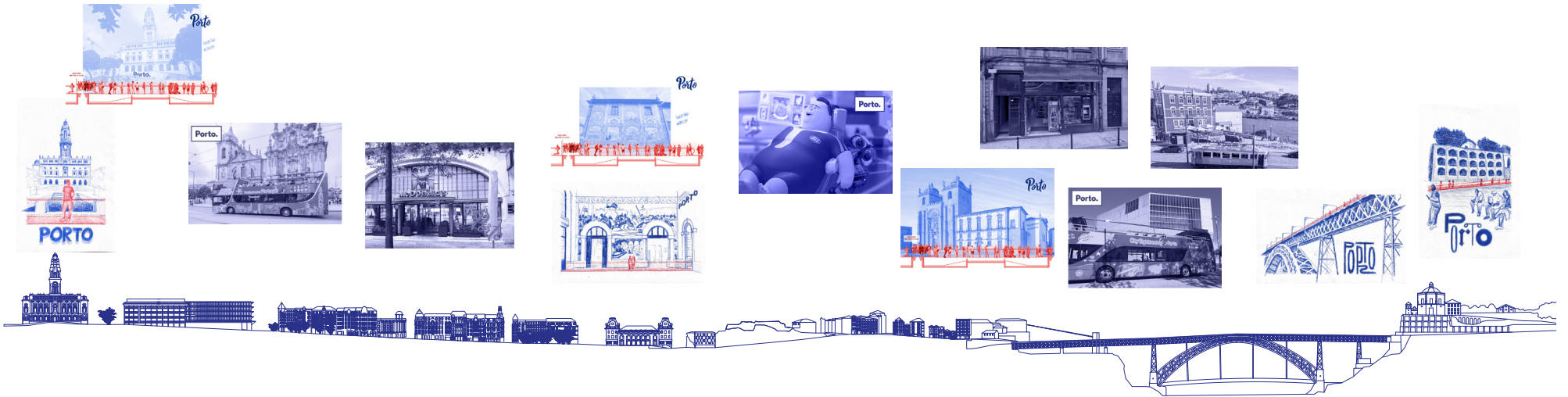


STREET

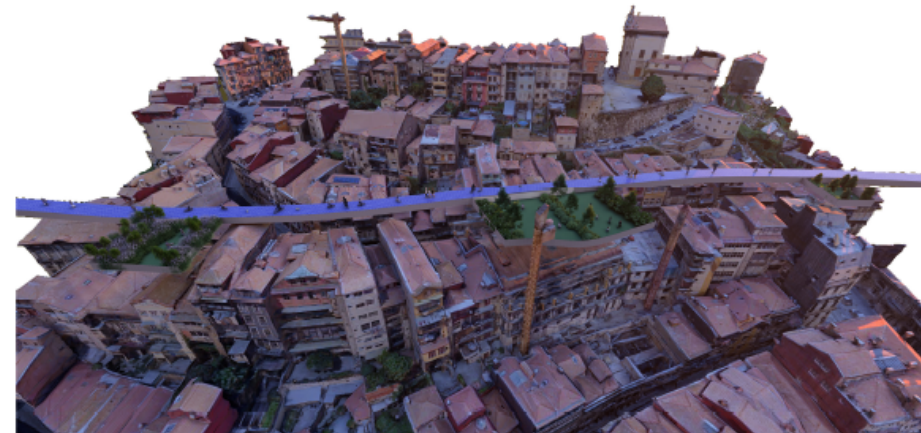


PERISCOPE

TRAVELATOR



INTERVENTIONS OF MOVEMENT



THE ETHICAL CITY

With the ongoing threat of pandemics, artificial intelligence, food + energy insecurity, the Climate Emergency and political upheaval across the globe, we are asking the question, what does this mean for the current city and the future of cities? Ethical decision making and processes relating to the planet, society and the choices that we make can no longer be separated from architectural design.

