



**An Ghníomhaireacht
Tithíochta**
The Housing Agency

Housing Conference 2022

Sustainable Housing

24th November, 8.00 – 13.00

**GLASGOW
URBAN LAB
THE GLASGOW
SCHOOL OF ART**

Place and Life in the City

Prof Brian M Evans PhD

City Urbanist, Glasgow

Adviser, United Nations Economic Commission for Europe

Director Glasgow Urban Lab & UNECE Centre of Excellence

Professor of Urbanism & Landscape, the Glasgow School of Art



The Higgs paradox.

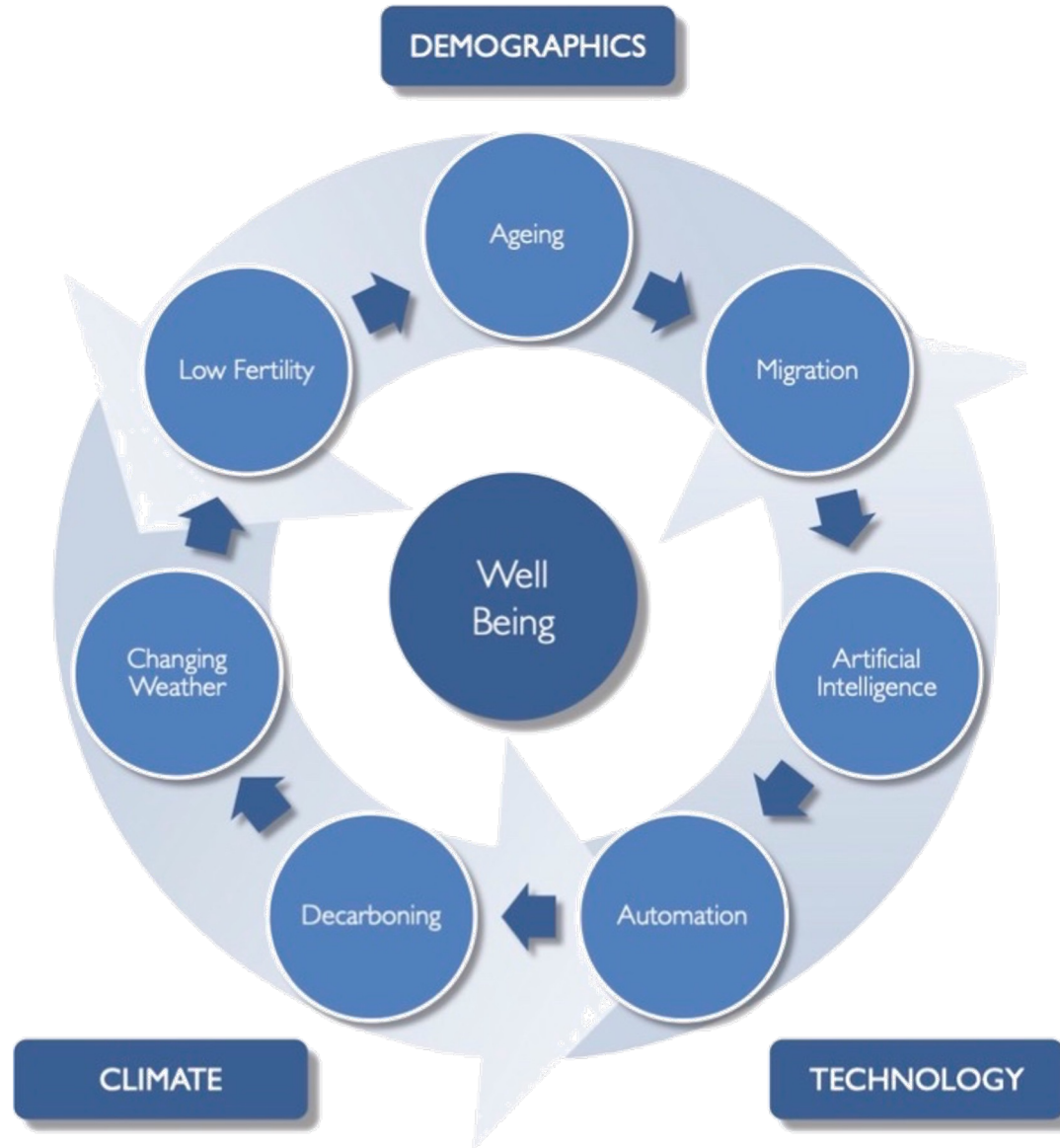
“If we are to build the city of the future,
we must first imagine it ...

*... but what happens to our collective
consciousness and mental health if the only
futures we can imagine are apocalyptic and
dystopian”.*

We need hope...

DEMOGRAPHIC CLIMATE & TECHNOLOGICAL CHANGE

A benign or toxic cycle?



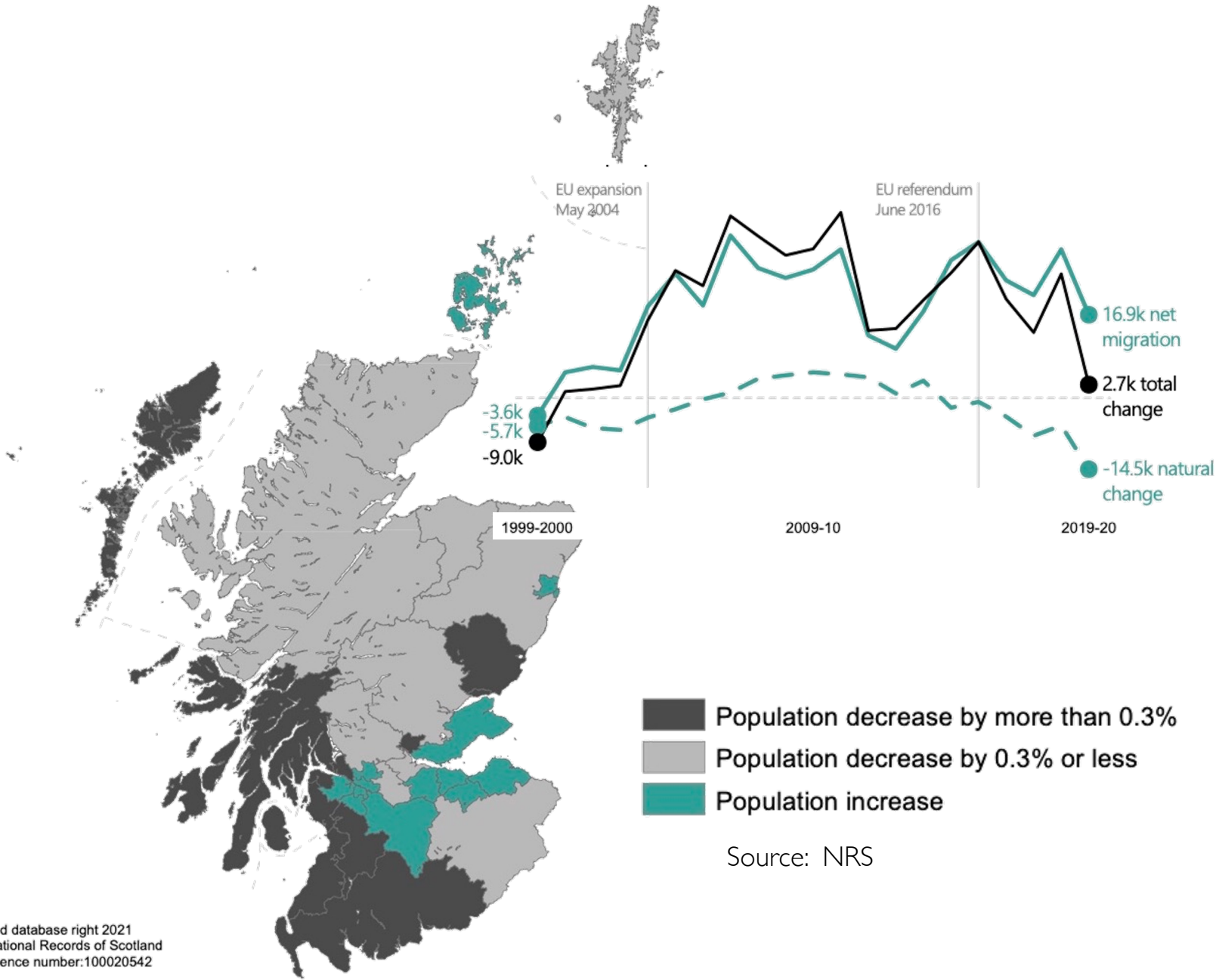
Vision, leadership and pragmatic management are needed to respond to these global trends.

This is the 21st century challenge for government, business and education at national, regional and city level.

SCOTLAND'S URBAN
AGE
2022
Shocks to the System

COUNTRY	Pop M 1971	Pop M 2020	% change
Scotland	5.3	5.5	5%
Denmark	4.9	5.8	17%
Finland	4.6	5.5	20%
Netherlands	13.2	17.4	32%
Norway	3.9	5.4	38%
Ireland	3.0	5.0	67%
NZ	2.9	5.1	78%

Source: World Bank, Irish government



Source: NRS

Agenda 2030 :Transforming our World – the Sustainable Development Goals



Article 2: comprehensive, far-reaching and **people-centred** universal and transformative goals and targets

Article 5: integrated and indivisible to balance the three dimensions of sustainable development – economic, social and environmental



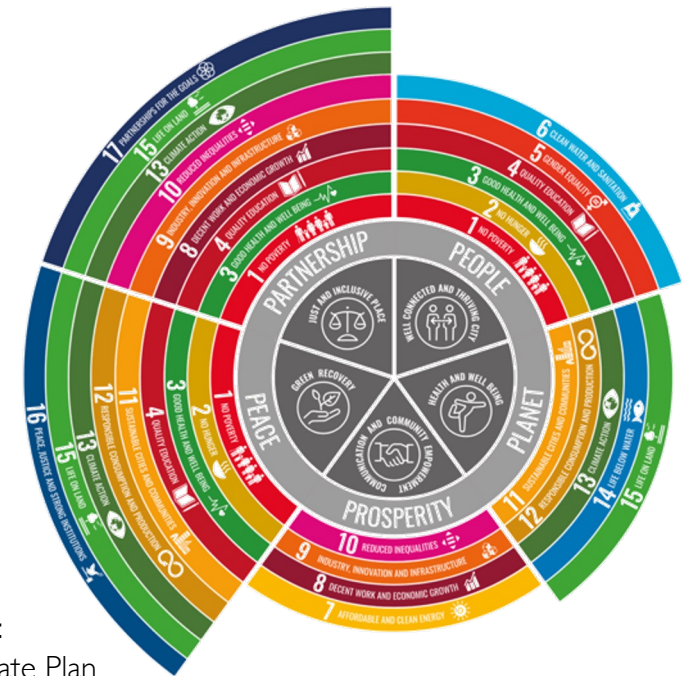
Source:

Outcomes-focused
Policy Making in Scotland
www.nationalperformance.gov.scot



Source:

Glasgow's Climate Plan
Response to the climate & ecological emergency
www.glasgow.gov.uk



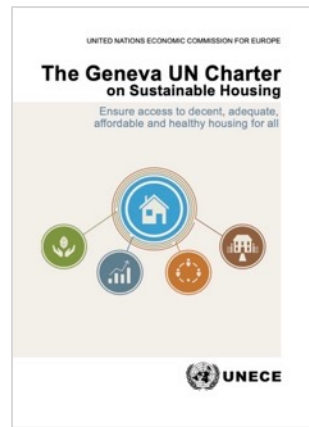
The SDGs enable **vertical** and **horizontal** integration

City Urbanist\Glasgow

Place and Life in the UNECE: Regional Action Plan 2030



Place and Life in the UNECE: Regional Action Plan 2030

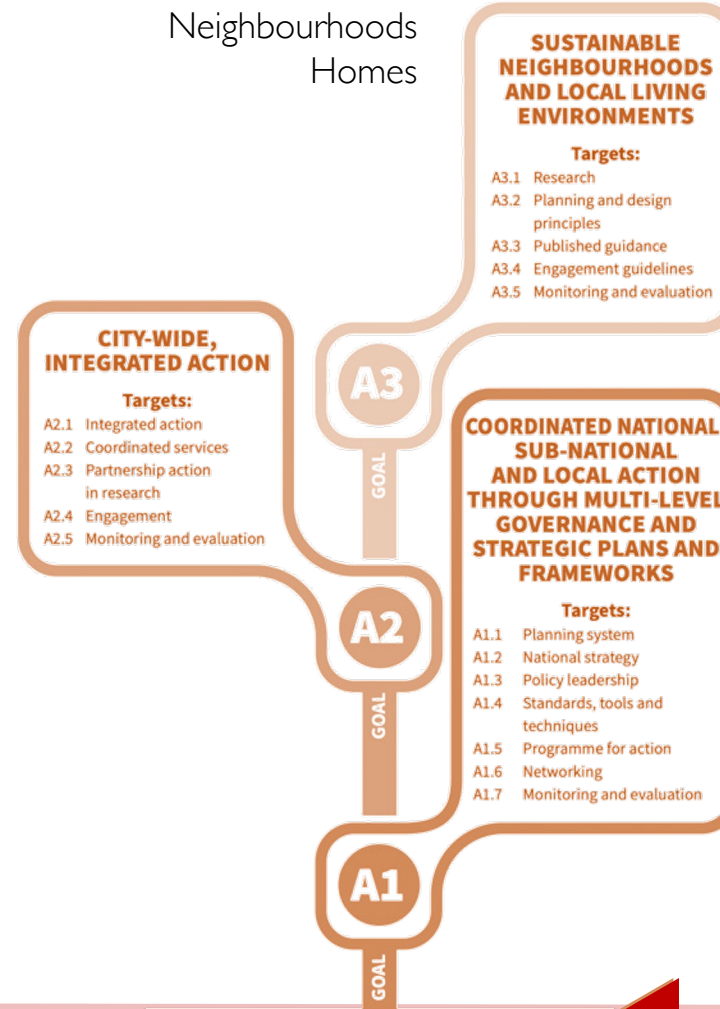


Housing & Homes
Governance & Land
Climate & Finance

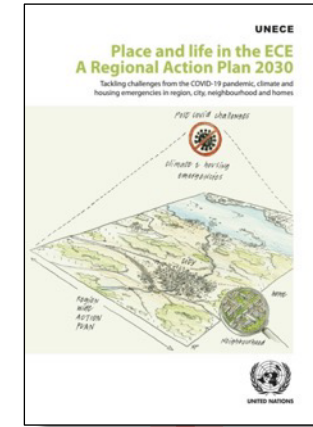


POLICY AREA B:
SUSTAINABLE HOUSING
AND HOMES

Cities
Neighbourhoods
Homes



POLICY AREA A:
CITIES, NEIGHBOURHOODS,
HOMES AND RURAL LIFE



Vertical Integration of SDGs into National & Local Frameworks



Global Goals
(SDGs)



National Outcomes
(NPF)



Source: UN, Scottish Government, SFC

PLACE IN SCOTLAND

The PLACE Principle



Link to
Place Principle

What does the Place Principle say?

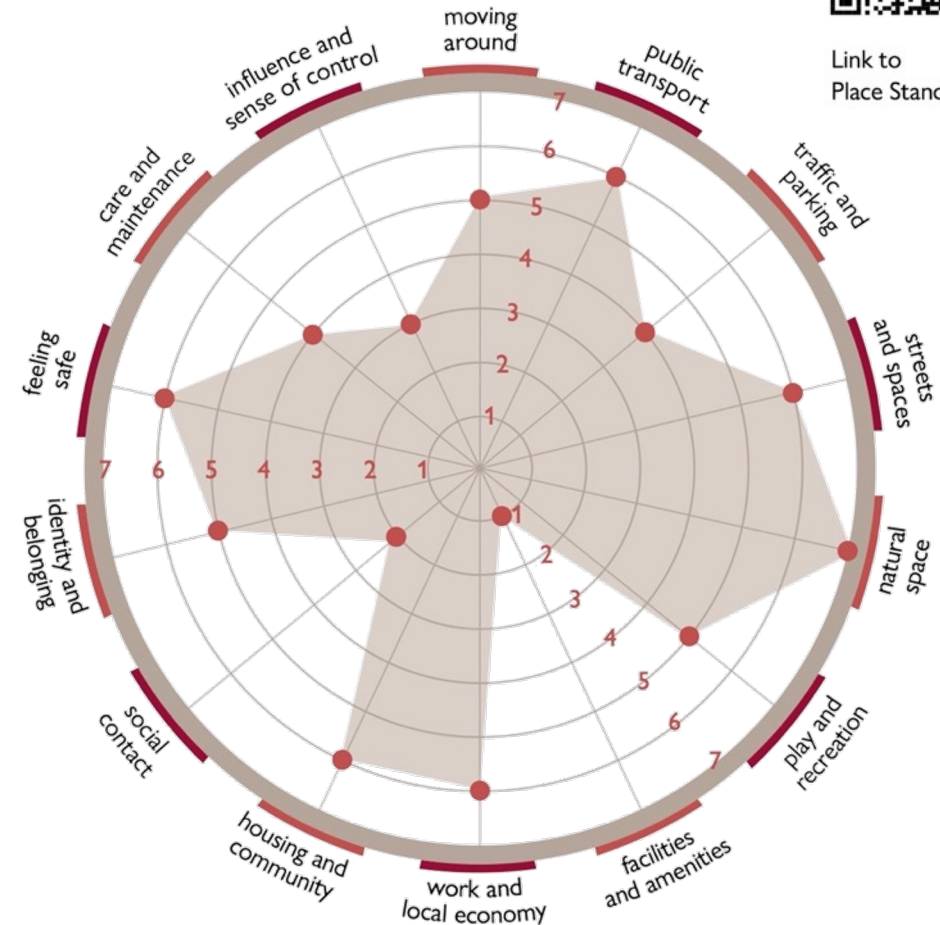
We recognise that:

- Place is where people, location and resources combine to create a sense of identity and purpose, and is at the heart of addressing the needs and realising the full potential of communities. Places are shaped by the way resources, services and assets are directed and used by the people who live in and invest in them
- A more joined-up, collaborative, and participative approach to services, land and buildings, across all sectors within a place, enables better outcomes for everyone and increased opportunities for people and communities to shape their own lives.

The PLACE Standard Tool



Link to
Place Standard Tool



National Planning Framework 4 (NPF4) & National Performance Framework (NPF)



NPF outcomes & SDG Targets



Sustainable places



Liveable places



Productive places

National Developments

Legend

Sustainable Places

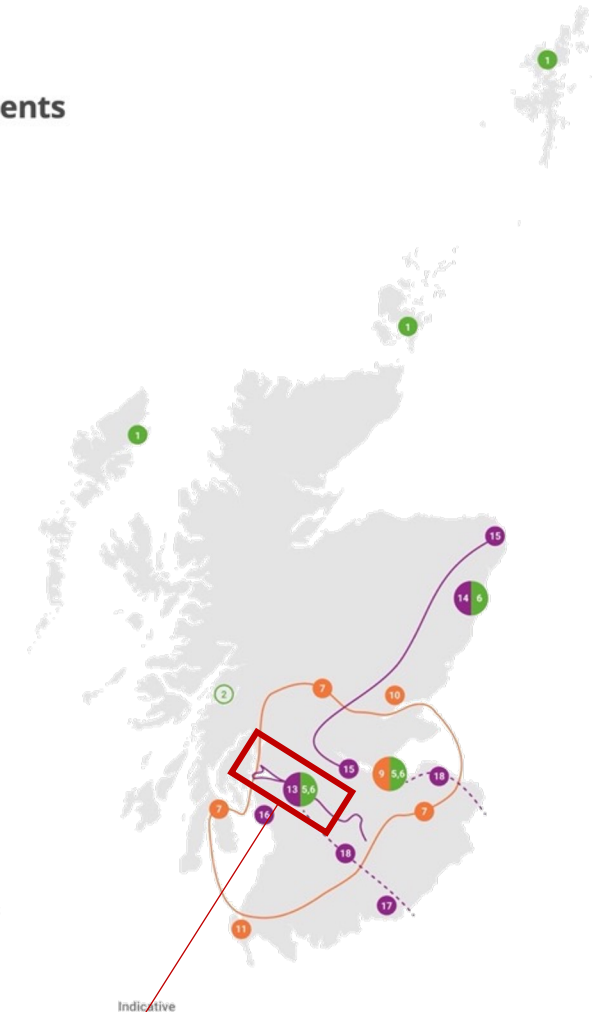
- 1 Energy Innovation Development on the Islands
- 2 Pumped Hydro Storage
- 3 Strategic Renewable Electricity Generation and Transmission Infrastructure
- 4 Circular Economy Materials Management Facilities
- 5 Urban Sustainable, Blue and Green Surface Water Management Solutions
- 6 Urban Mass/Rapid Transit Networks

Liveable Places

- 7 Central Scotland Green Network
- 8 National Walking, Cycling and Wheeling Network
- 9 Edinburgh Waterfront
- 10 Dundee Waterfront
- 11 Stranraer Gateway
- 12 Digital Fibre Network

Productive Places

- 13 Clyde Mission
- 14 Aberdeen Harbour
- 15 Industrial Green Transition Zones
- 16 Hunterston Strategic Asset
- 17 Chapelcross Power Station Redevelopment
- 18 High Speed Rail



Glasgow City Region 35-40% of Scotland's population

HOUSING: A key to vertical and horizontal integration of SDGs

Scottish Government
Housing Strategy 2040



Source: Scottish Government

How we live in, heat and build our homes impacts on the environment

National Outcome: Economy



National Outcome: Environment



Affordable housing helps to tackle poverty and inequality

National Outcome: Poverty



Housing creates and supports jobs and drives inclusive economic growth and social benefits

National Outcome: Economy



National Outcome: Fair Work & Business



National Outcome: Education



Safe and warm homes and good neighbourhoods improve physical and mental health and wellbeing and build strong communities

National Outcome: Human Rights



National Outcome: Communities



National Outcome: Health



High-quality homes and neighbourhoods improve children's wellbeing and development

National Outcome: Children



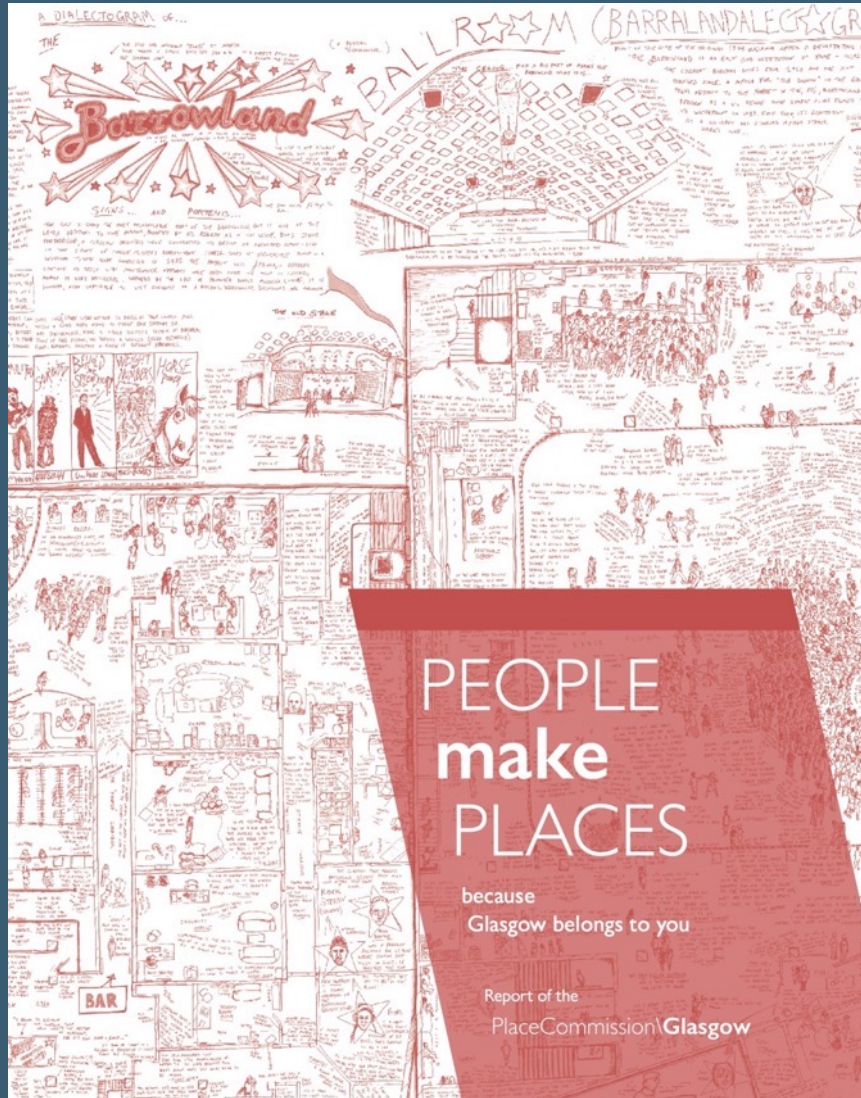
National Outcome: Education



Creative & diverse Open & international



Policy delivery for Outcomes



PEOPLE make PLACES

“

Cities have the capability of providing something for everybody, only because, and only when, they are created by everybody.”

JANE JACOBS

Place Commission\Glasgow
City Urbanist\Glasgow

What we mean when we talk about place

“

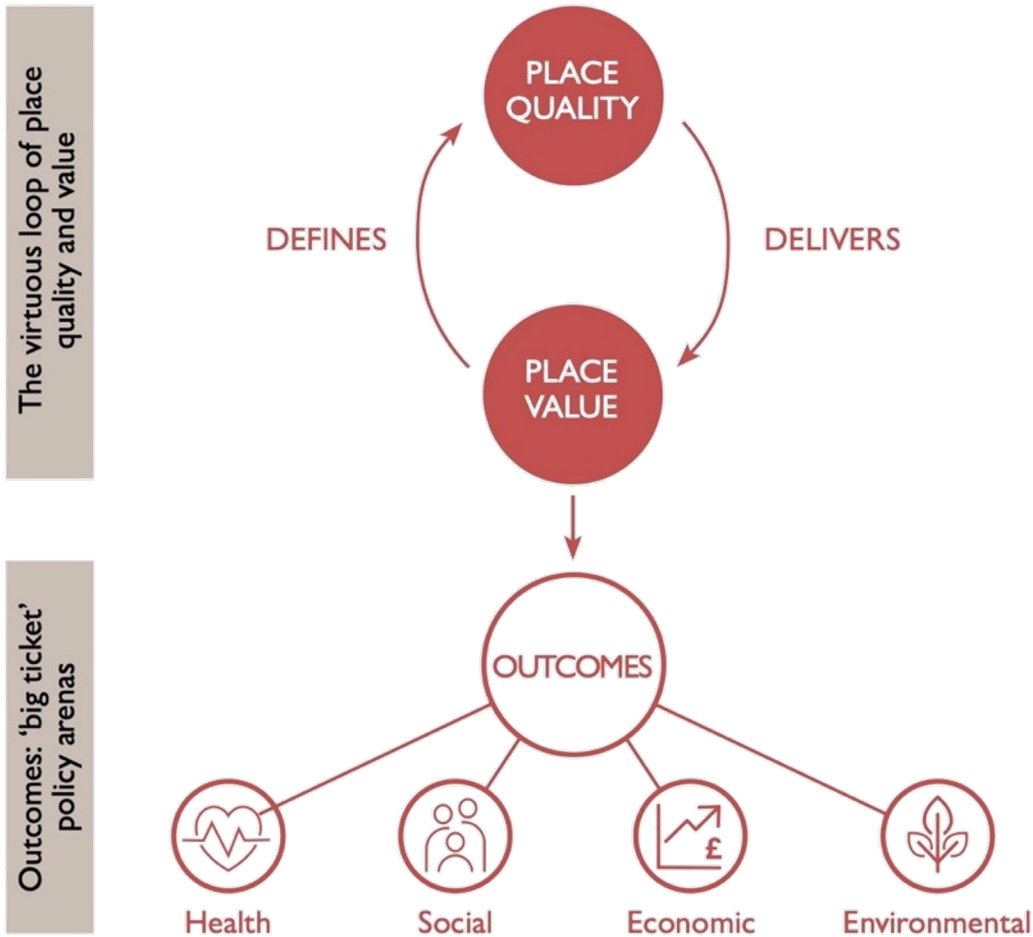
Place is one of the most
multi-layered and multi-purpose
words in our language.”

ALESSANDRO DELL'ORTO

The Ubiquity of Place

Place is everywhere, places are all around us. Everywhere is some place. Place is a general construct, a concept that gives everywhere some qualities, some specificity whether cultural, social, environmental or economic. And these in turn connote other qualities – ceremonial, beautiful, tranquil, vibrant, community, busy, unloved places.

PLACE – What do we mean?



Source: Carmona (2019)

Health outcomes

- Better physical health
- Better mental health
- Better general fitness
- Greater daily comfort
- Enhanced quality of life

Social outcomes

- Fewer accidents
- More social integration
- Lower rates of crime
- Better educational outcomes
- Street-level viability and sociability
- Civic pride
- Inclusiveness
- Enabling environments for older age
- Enabling places for people with disabilities

Economic outcomes

- Residential property uplift
- Retail property uplift and reduced vacancy
- More viable investments
- Increased local tax base
- Reduced public expenditure
- Lower costs of living
- Higher productivity

Environmental outcomes

- Reduced energy consumption
- Reduced carbon emissions
- Adaptive reuse of buildings and spaces
- Reduced pollution
- Greater resilience
- Ecological diversity

Source: Carmona (2019)

VALUE | QUALITY | ATTACHMENT

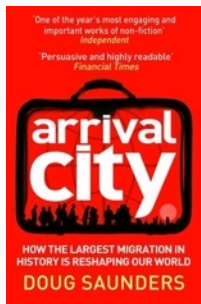
Place Commission\Glasgow
City Urbanist\Glasgow

Glasgow Place Narrative – The Cities of Glasgow

International

A reputation based on:

- ✓ Culture
- ✓ Sport
- ✓ Creativity
- ✓ Diversity
- ✓ Living



“Scotland without Glasgow ...would have no worldly dimension.”

Place Commission\Glasgow
City Urbanist\Glasgow

Metropolitan

The Bigness of Glasgow

Glasgow Primary Urban Area

Glasgow City Council
East Dunbartonshire Council
East Renfrewshire Council
Renfrewshire Council



Everyday

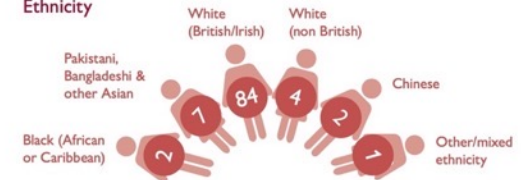
The Sum of Small Things

GOW 2021

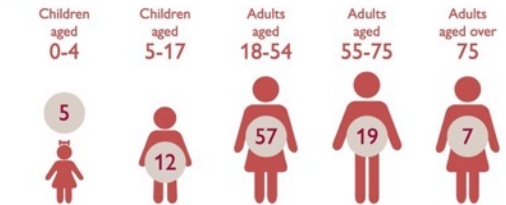
are over 630,000
living in Glasgow.
ented in 100 people,
pulation of the city
ke this.



Ethnicity



Age

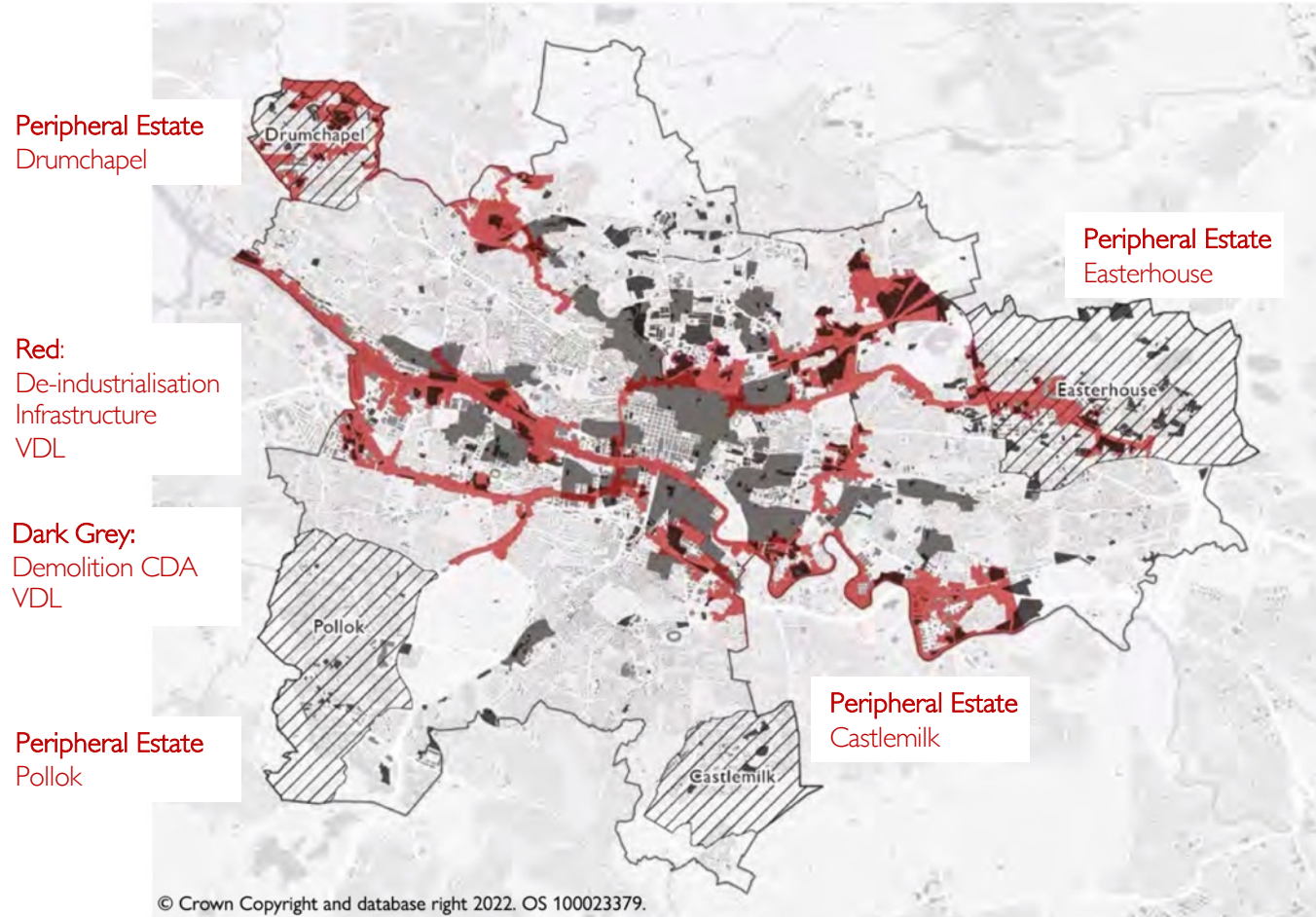


Disability



Data sources: National Records of Scotland, Glasgow City Council, Scottish Index of Multiple Deprivation, Understanding Glasgow.

Glasgow Place Narrative – The Journey



Source:
Glasgow City Council

The map shows the aggregate effect of motorway construction, demolition from comprehensive development areas and the vacant and derelict land from deindustrialisation.

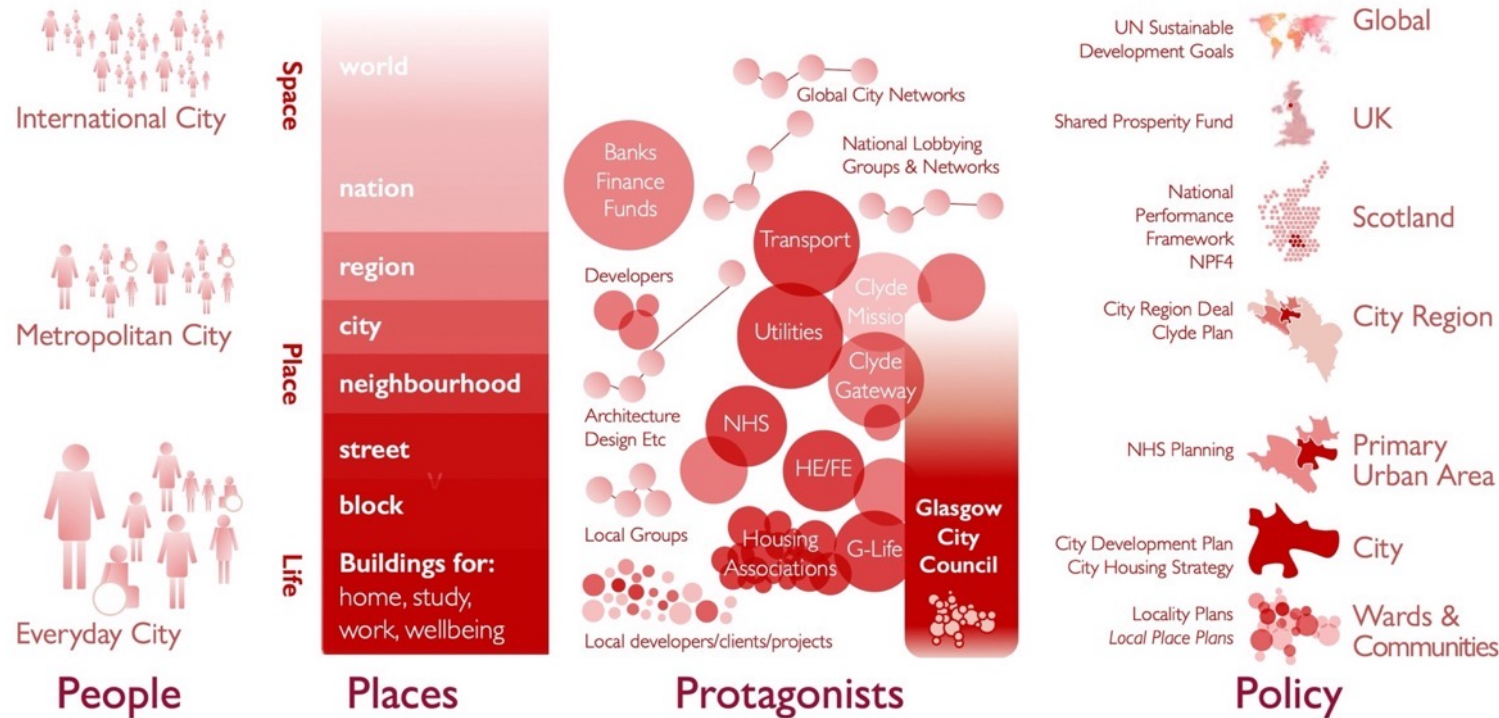
- ❑ Glasgow's Story from 1850 to 2050
- ❑ Engagement
- ❑ Challenges
- ❑ Learning from Glasgow
- ❑ Applying the Learning
- ❑ Capacity Building – Place Ecosystem
- ❑ Recommendations – for Glasgow

Report Download



Place Commission\Glasgow
City Urbanist\Glasgow

A Place Ecosystem



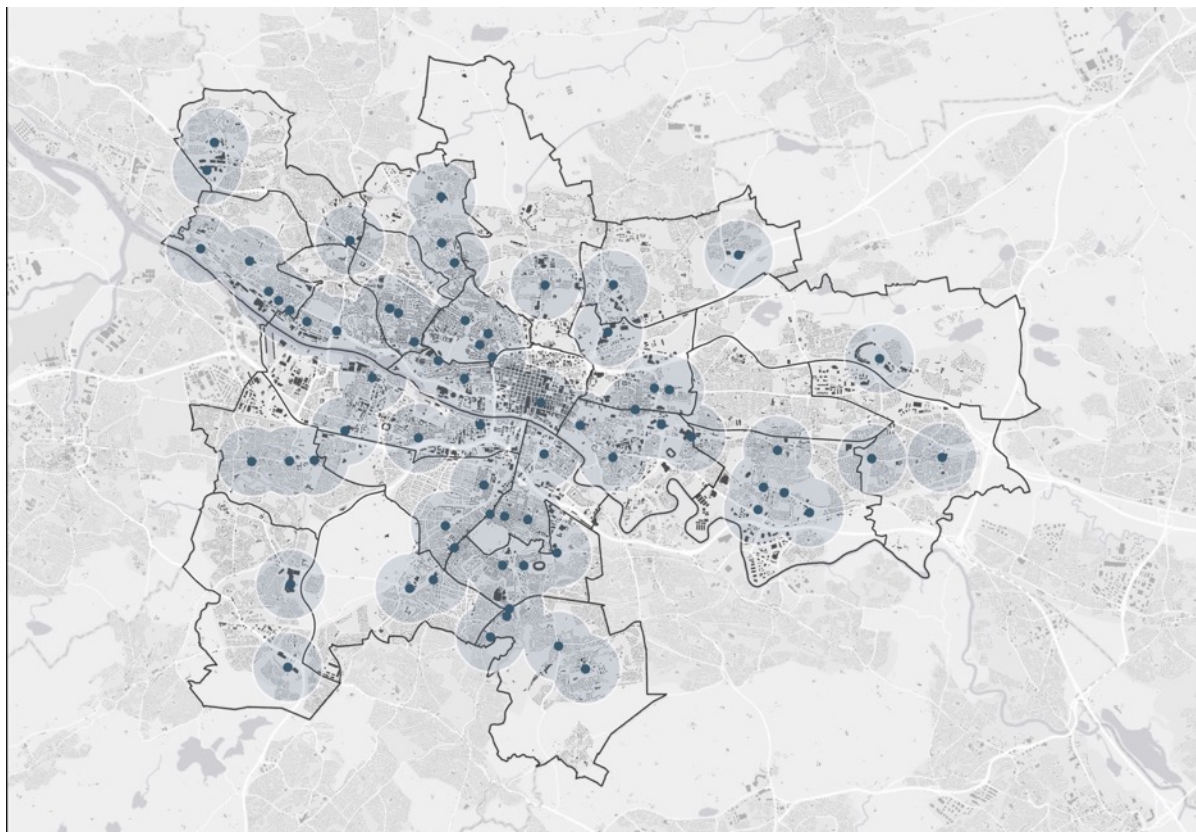
- ❑ The Places of Glasgow: of people, by people, for people
- ❑ Learning from Glasgow
- ❑ Applying the Learning
- ❑ Capacity Building – Place Ecosystem
- ❑ Recommendations – for Glasgow

Report Download

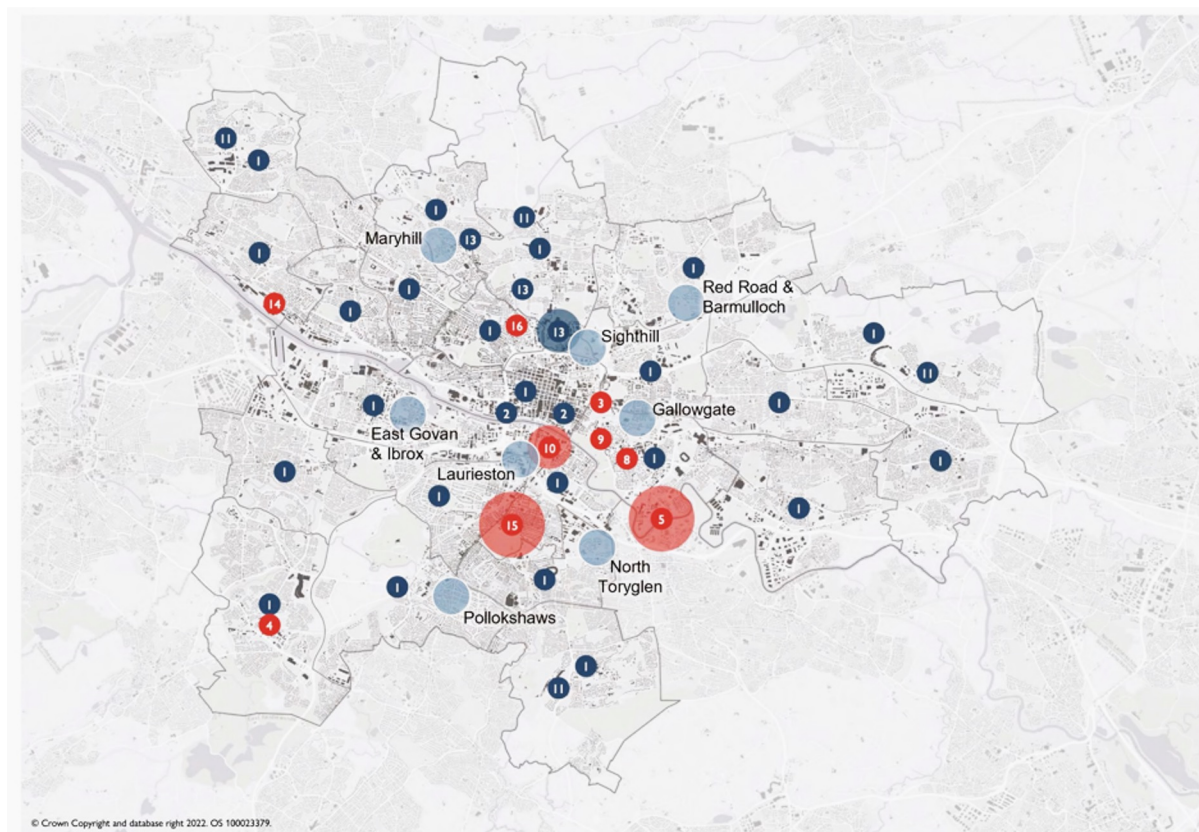


Place Commission\Glasgow
City Urbanist\Glasgow

Glasgow Place Narrative – The PLACES of Glasgow



Glasgow City: Geography of Neighbourhoods



Glasgow City: Typology of Place

Report Download



Place Commission\Glasgow
City Urbanist\Glasgow

Glasgow Place Narrative – The PLACES of Glasgow



1 \AiR\

Artists in Residence is a city-wide project to bring engagement with the arts close to communities across each of the 23 wards in Glasgow.

Place Credentials: Community Engagement, Community Empowerment, Public Enterprise, Inspirational Intent, Education



2 \After the Pandemic\

After the Pandemic uses creativity and community to rethink our environments, reimagine our cities, and redesign our communities to be greener, more vibrant, and more resilient.

Place Credentials: Community Engagement, Community Activation, Climate Action, Partnership, Inspirational Intent



3 \Bell Street Stables\

Bell Street Stables is a positive example of how a historic industrial building can be restored for modern use.

Place Credentials: Excellent Design, Public Enterprise, Climate Action, Procurement



4 \CCI\

The Centre for Civic Innovation (CCI) is a citizen-centred design team within Glasgow City Council responsible for establishing a design-led approach to the understanding of societal shifts and civic experience within the city.

Place Credentials: Community Engagement, Community Empowerment, Public Enterprise, Excellent Design, co-creation, Education



5 \Clyde Gateway\

Clyde Gateway is an urban regeneration Company established to deliver significant social, economic, and physical change across East Glasgow and South Lanarkshire.

Place Credentials: Community Engagement, Excellent Design, Public Enterprise, Governance, Partnership, Procurement, Delivery, Longevity



6 \Clyde in the Classroom\

Clyde in the Classroom is a hands-on project which uses the life history of a native Scottish species, the brown trout, to promote awareness of river ecology among young people across the River Clyde catchment.

Place Credentials: Community Activation, Climate Action, Education, Delivery



7 \Clyde Climate Forest\

The Clyde Climate Forest is a project that aims to plant 18 million trees across Glasgow City Region and has the potential to benefit quality of life, quality of place, and wildlife habitats.

Place Credentials: Community Activation, Climate Action, Education, Delivery



8 \Glasgow Women's Library\

The Glasgow Women's Library is a leading charity and social enterprise that supports thousands of women across Scotland every year by coordinating and hosting a range of public events, services, cultural programmes, and learning opportunities.

Place Credentials: Community Empowerment, Public Support, Explicit Values, Inspirational Intent, Education

Glasgow Place Narrative – The PLACES of Glasgow



9 \Monteith Row\

Monteith Row is a housing project in the inner eastend of Glasgow that has restored a neglected city block and revitalised the listed Monteith Hotel.

Place Credentials: Excellent Design, Public Enterprise, Climate Action, Procurement



10 \New Gorbals\

New Gorbals is regarded as an exemplar of masterplan-led area regeneration. New Gorbals Housing Association, established by residents in 1989, has played a pivotal role in the transformative change.

Place Credentials: Community Empowerment, Community Activation, Governance, Partnership, Procurement, Longevity



11 \On the Edge\

On the Edge is a visual arts project by Bash Khan that raises awareness of the people and places in Glasgow left on the edge by the political, planning and development process. It asks 'how can communities reclaim and give themselves 'permission' to use their public spaces?'

Place Credentials: Community Empowerment, Community Activation, Inspirational Intent



12 \Refuweegee\

Refuweegee is a community-led charity which helps to ensure that forcibly displaced people arriving in Glasgow are greeted by kindness and generosity.

Place Credentials: Community Empowerment, Community Activation, Inspirational Intent, Values



13 \Scottish Canals\

Scottish Canals is a public body that has proactively improved the environmental and socio-economic conditions on and around the banks of the Forth & Clyde Canal by combining functional requirement with quality of place.

Place Credentials: Community Activation, Excellent Design, Public Enterprise, Climate Action, Partnership, Procurement, Delivery



14 \Scotstoun Community Garden\

Scotstoun Community Garden is a community-driven project that has seen a former industrial site be transformed into a tranquil and beautiful green space by volunteers who sourced their own funds, tools, and materials.

Place Credentials: Community Activation, Excellent Design, Climate Action



15 \South Seeds\

South Seeds is a community-led organisation based in Govanhill with the mission to enable Southsiders to lead more sustainable lives.

Place Credentials: Community Empowerment, Community Activation, Social Enterprise, Climate Action, Values, Education



16 \Woodside Towers\

The regeneration of the Woodside Multi-Storey Flats in North Glasgow is an exemplar for retrofitting high-rise housing and has helped to reduce energy demand and tackle fuel poverty for residents.

Place Credentials: Excellent Design, Climate Action, Community Engagement, Procurement

The Importance of 'Place' – quality, value, attachment – OUTCOMES

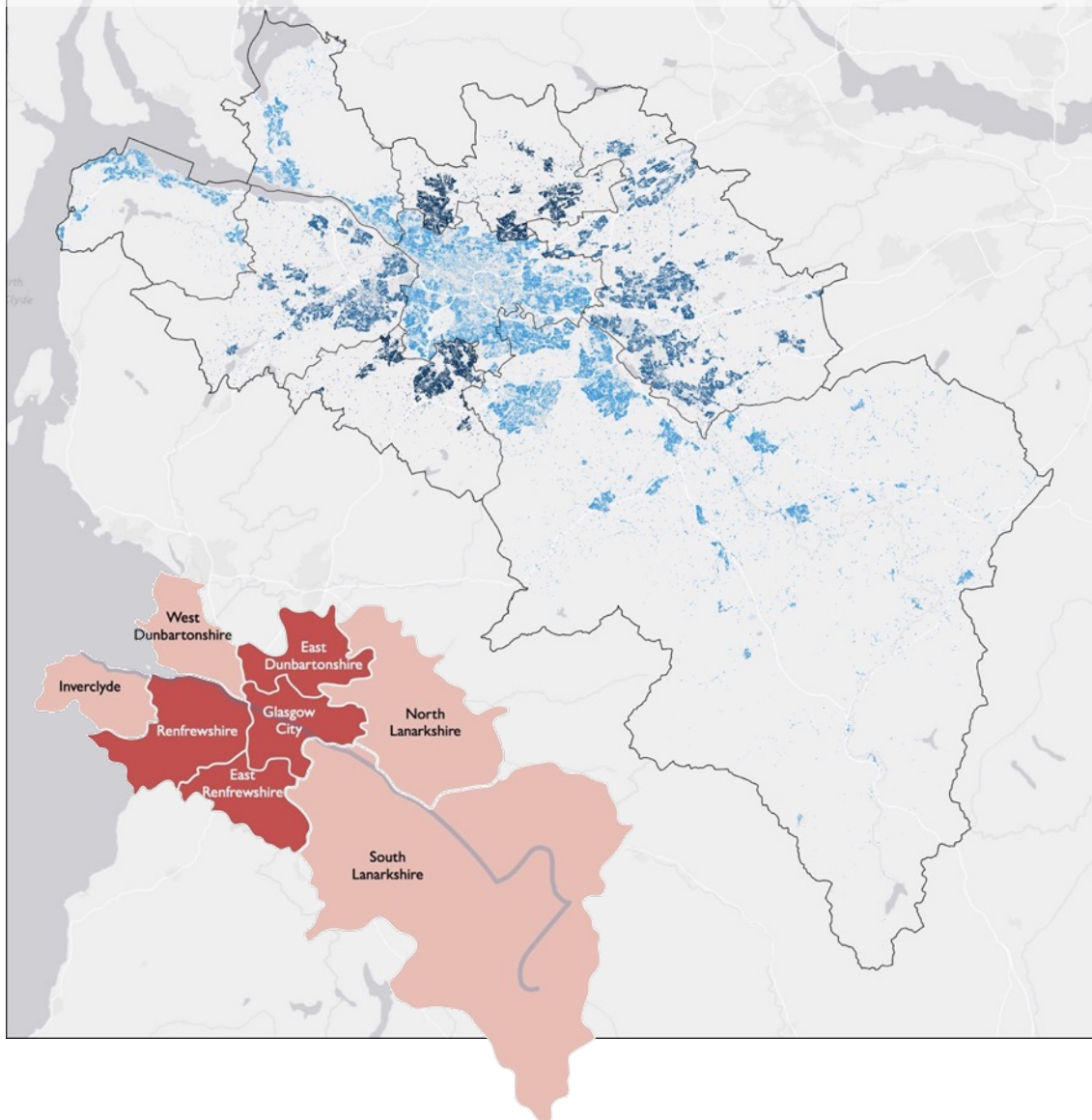
Place Story\ Place Characteristic	After the Pandemic	AiR	Bell Street Stables	Centre for Civic Innovation	Clyde Climate Forest	Clyde Gateway	Clyde in the Classroom	Glasgow Women's Library	Monteith Row	New Gorbals	On the Edge	Refuweegee	Scottish Canals	Scotstoun Community Garden	South Seeds	What If...?/ Scotland	Woodside Towers
Community Engagement	•	•		•		•	•			•	•	•	•	•		•	•
Community Empowerment		•		•		•		•		•		•			•		
Community Activation	•					•	•			•	•	•	•	•	•	•	
Volunteering					•			•			•	•		•	•	•	
Public Support			•	•	•	•		•	•	•	•			•	•	•	•
Private Initiative	•						•				•		•				
Social Enterprise								•		•		•	•	•	•		
Partnership	•	•	•		•	•			•	•			•	•	•	•	•
Co-creation	•	•		•	•		•					•	•	•	•	•	
Inspirational Intent	•	•	•	•	•		•	•	•	•	•	•			•	•	•
Explicit Values	•	•	•	•	•	•	•	•	•	•		•	•	•	•	•	•
Climate Action	•	•			•		•		•				•		•		•
Wellbeing		•	•	•	•	•		•	•	•		•	•	•		•	
Design Excellence			•	•		•		•	•	•	•		•	•		•	•
Scale	National	Each Ward	Site	City	Region	Area	Region	Site	Site	Area	Area	City	Area	Site	Area	National	Site
Agile Procurement			•			•			•	•			•	•			•
Robust Governance			•		•	•	•	•	•	•			•			•	•
Education & Learning	•	•		•	•		•	•			•	•			•		
Determined Delivery			•		•	•	•	•	•	•	•		•	•			•
Longevity					•	•	•	•		•					•		

Summary of Place Stories & Place Characteristics

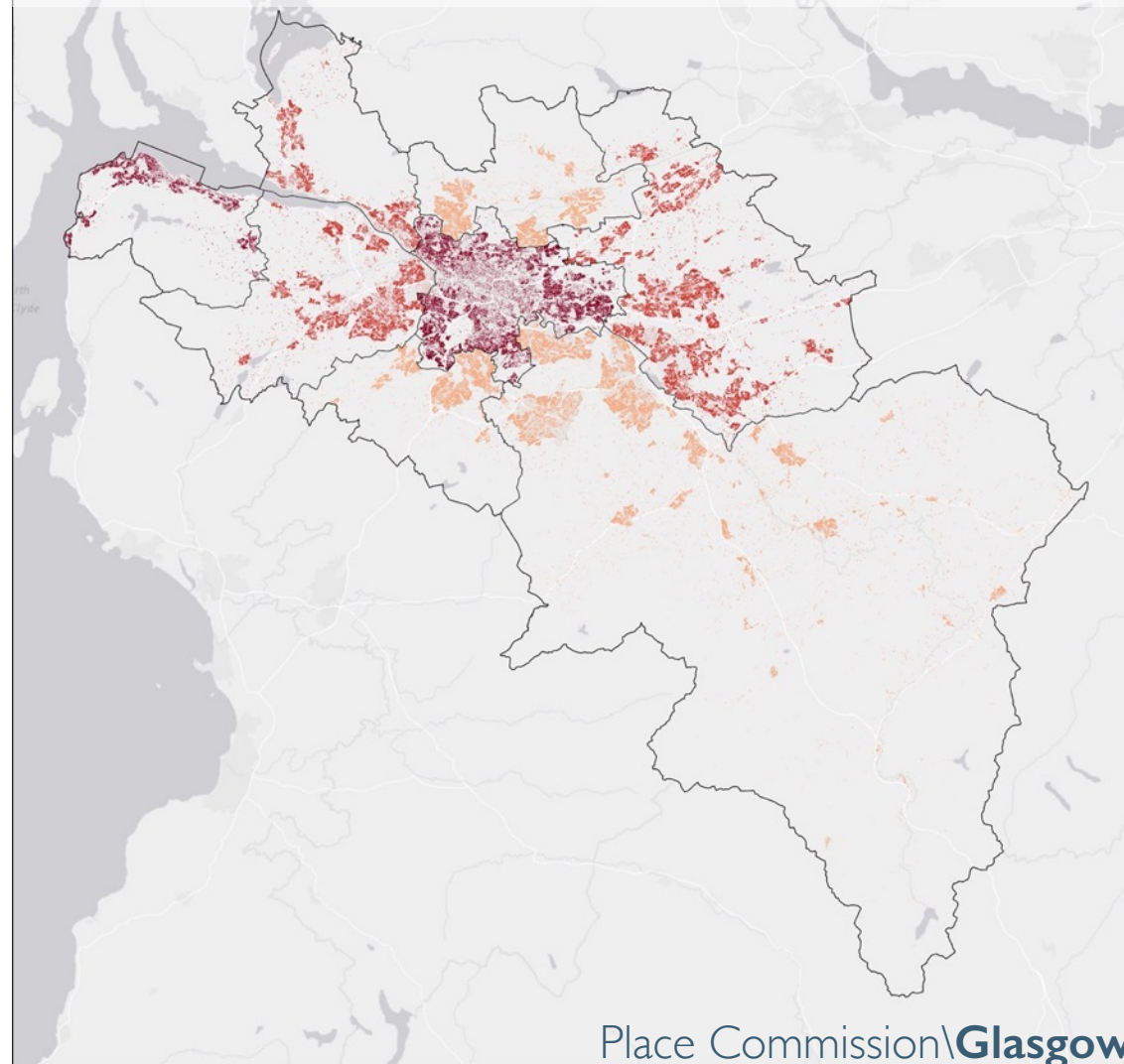
Place Commission\Glasgow
City Urbanist\Glasgow

Glasgow Place Narrative – The Cities of Glasgow – Metropolitan

Glasgow City Region: Geography of Carbon Retrofit: Light = lower



Glasgow City Region: Geography of Disadvantage: Light = lower



“

You won't often find us talking about climate change ...

... we think the best way to tackle climate change is by cutting energy use, reducing waste and using local spaces to grow food – bringing practical benefits to local people.

So, we talk about these things most of the time.”

Lucy Gillie, South Seeds

- ❑ Overcoming fragmented policy
- ❑ Building a Consensus – paradigm shift
- ❑ Place: The principal game in town?
- ❑ Leadership
- ❑ Capacity Building – Place Ecosystem
- ❑ Living not Housing

FURTHER INFORMATION:

Place Commission Report:

<https://www.glasgow.gov.uk/placecommission/>

Scotland's Urban AGE 2022: Shocks to the System

<https://www.ryden.co.uk/news-insights/major-study-calls-for-tax-powers-to-be-devolved-to-scotland-s-biggest-cities>

<https://www.agcc.co.uk/files/SUA-2022-Full-Report-24May2022.pdf>

Place and Life Regional Action Plan 2030

Intro:

<https://unece.org/housing/regional-action-plan-2030>

Official report:

<https://unece.org/hlm/documents/2021/08/session-documents/place-and-life-ece-regional-action-plan-2030-tackling>

Published report:

<https://unece.org/info/Housing-and-Land-Management/pub/369375>

The Cocktail of Change, Housing 2030 Podcast

<https://open.spotify.com/episode/0ZPg6I5kMDHzlZsODF7nqs>

<https://anchor.fm/housing-europe/episodes/The-cocktail-of-change-improving-the-cities-we-live-in-elv8i9/a-a3o3vau>

Living in Glasgow: A journey to 2030

Film made for UNECE for COP26

<https://www.youtube.com/watch?v=mSsdXnOqENQ>