

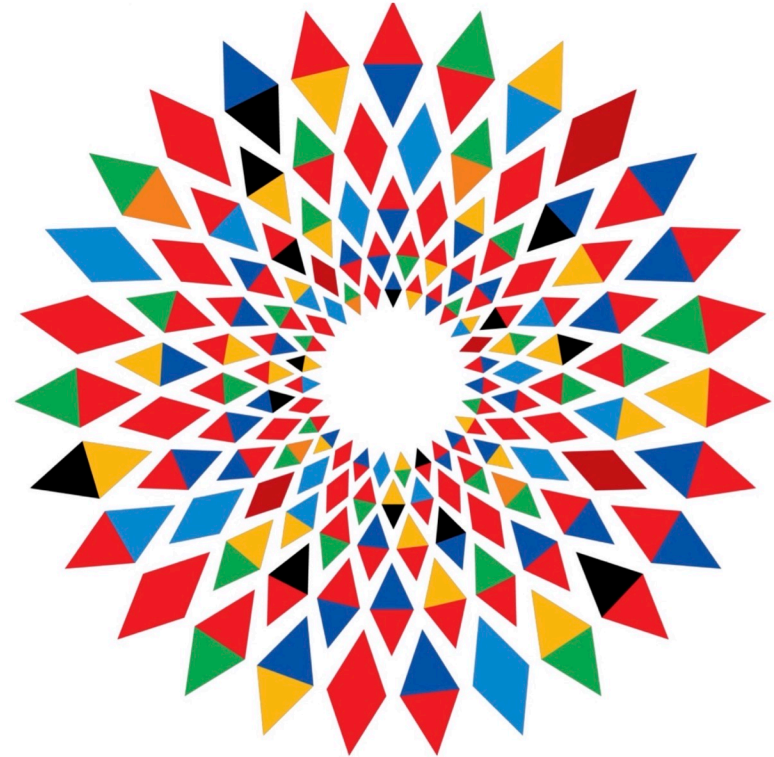
EU2022.CZ

ECAP 2022 Prague  
Conference on Architecture and Building Culture Policies

***Session:***  
***Housing Quality through Coordinated Development***

***Policy, Outcomes, Delivery***

***Prof Brian Evans PhD***



# Transforming Our World – Agenda 2020: The Global Goals



## Article 2:

comprehensive, far-reaching and **people-centred** universal and transformative goals and targets

## Article 5:

**integrated and indivisible** to balance the three dimensions of sustainable development – economic, social and environmental

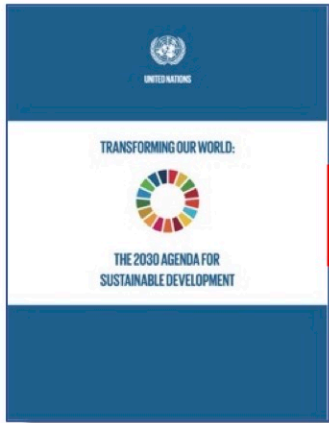
# Transforming Our World – Agenda 2020: The Global Goals



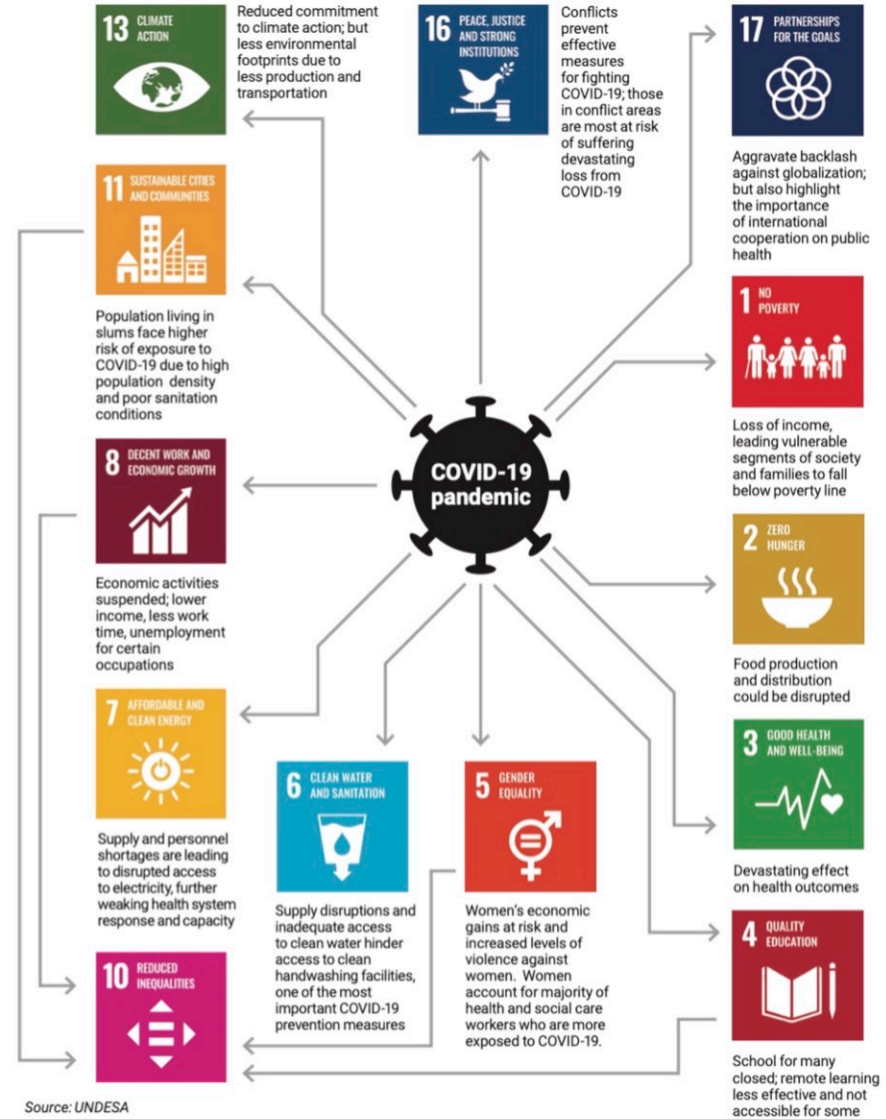
Source:  
UN-Habitat



# Transforming Our World – Agenda 2020: The Global Goals



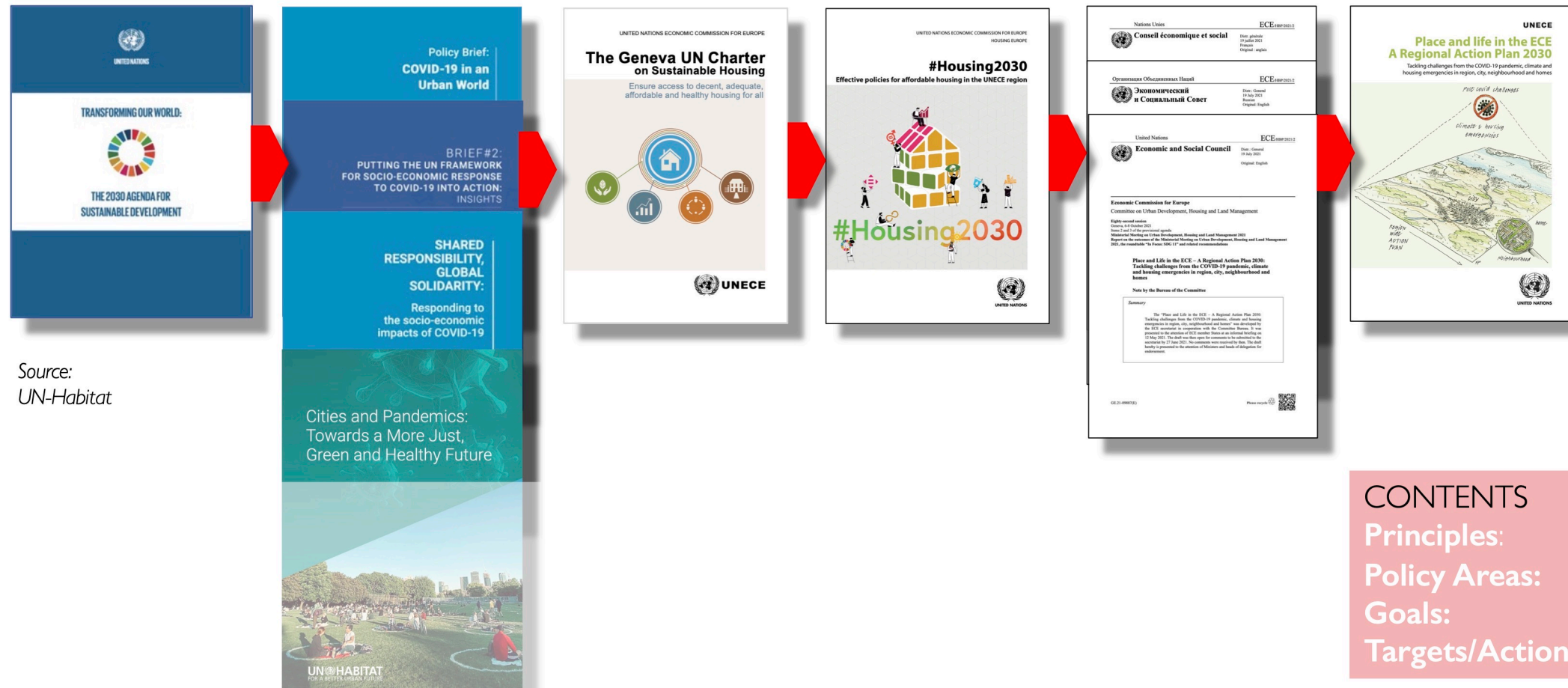
Source: UN-Habitat



Source: UNDESA



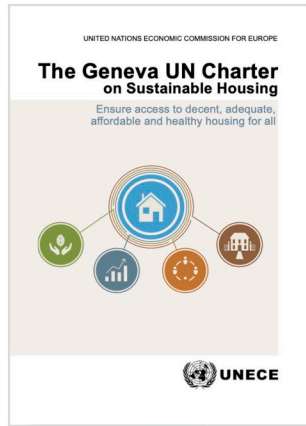
# Place and Life in the UNECE: Regional Action Plan 2030



Source:  
UN-Habitat

CONTENTS  
Principles:  
Policy Areas:  
Goals:  
Targets/Actions

# Place and Life in the UNECE: Regional Action Plan 2030

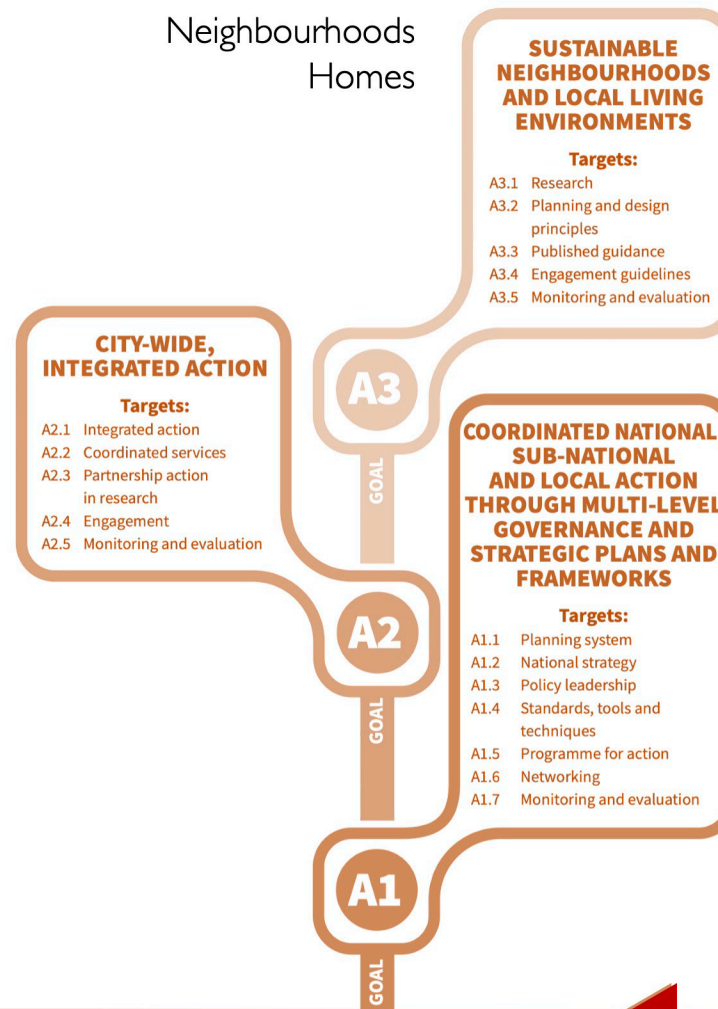


## Housing & Homes Governance & Land Climate & Finance

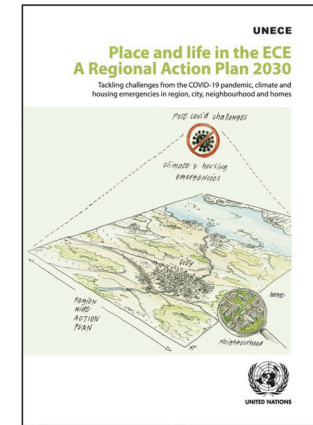


**POLICY AREA B:**  
SUSTAINABLE HOUSING  
AND HOMES

## Cities Neighbourhoods Homes



**POLICY AREA A:**  
CITIES, NEIGHBOURHOODS,  
HOMES AND RURAL LIFE





# Vertical Integration of SDGs into National & Local Frameworks



Global Goals (SDGs)



National Outcomes (NPF)



Source: UN, Scottish Government, SFC

# HOUSING: The key to vertical and horizontal integration of SDGs

Scottish Government  
Housing Strategy 2040



**How we live in, heat and build our homes impacts on the environment**

**National Outcome: Economy**

**National Outcome: Environment**

**Affordable housing helps to tackle poverty and inequality**

**National Outcome: Poverty**

**Housing creates and supports jobs and drives inclusive economic growth and social benefits**

**National Outcome: Economy**

**National Outcome: Fair Work & Business**

**National Outcome: Education**

**Safe and warm homes and good neighbourhoods improve physical and mental health and wellbeing and build strong communities**

**National Outcome: Human Rights**

**National Outcome: Communities**

**National Outcome: Health**

**High-quality homes and neighbourhoods improve children's wellbeing and development**

**National Outcome: Children**

**National Outcome: Education**



## Policy delivery for Outcomes



# The Importance of 'Place' – quality, value, attachment – OUTCOMES

The virtuous loop of place quality and value



Outcomes: 'big ticket' policy arenas



**Health outcomes**  
 Better physical health  
 Better mental health  
 Better general fitness  
 Greater daily comfort  
 Enhanced quality of life

**Social outcomes**  
 Fewer accidents  
 More social integration  
 Lower rates of crime  
 Better educational outcomes  
 Street-level viability and sociability  
 Civic pride  
 Inclusiveness  
 Enabling environments for older age  
 Enabling places for people with disabilities

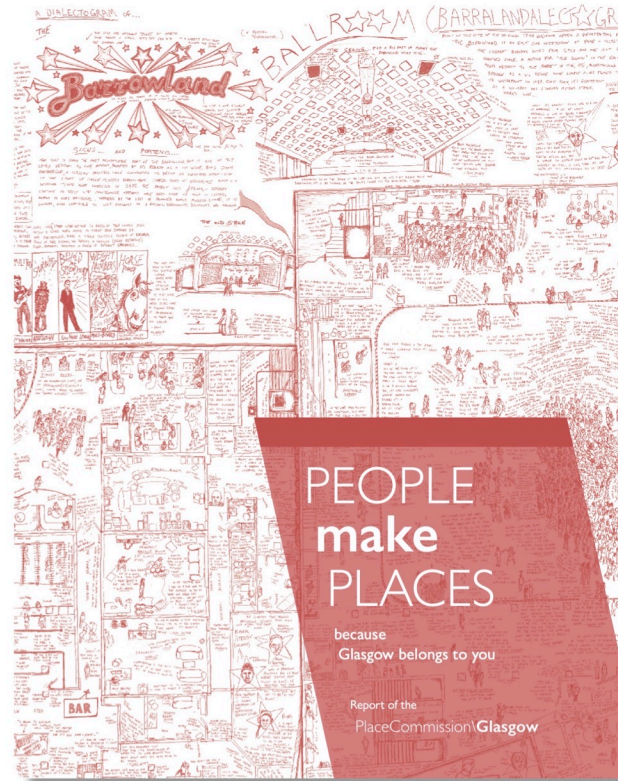
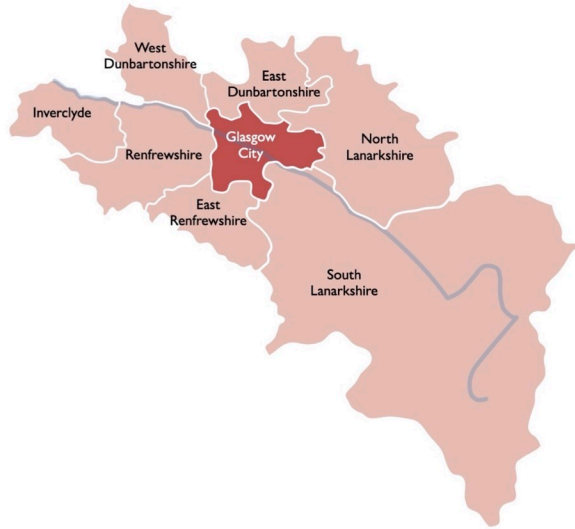
**Economic outcomes**  
 Residential property uplift  
 Retail property uplift and reduced vacancy  
 More viable investments  
 Increased local tax base  
 Reduced public expenditure  
 Lower costs of living  
 Higher productivity

**Environmental outcomes**  
 Reduced energy consumption  
 Reduced carbon emissions  
 Adaptive reuse of buildings and spaces  
 Reduced pollution  
 Greater resilience  
 Ecological diversity

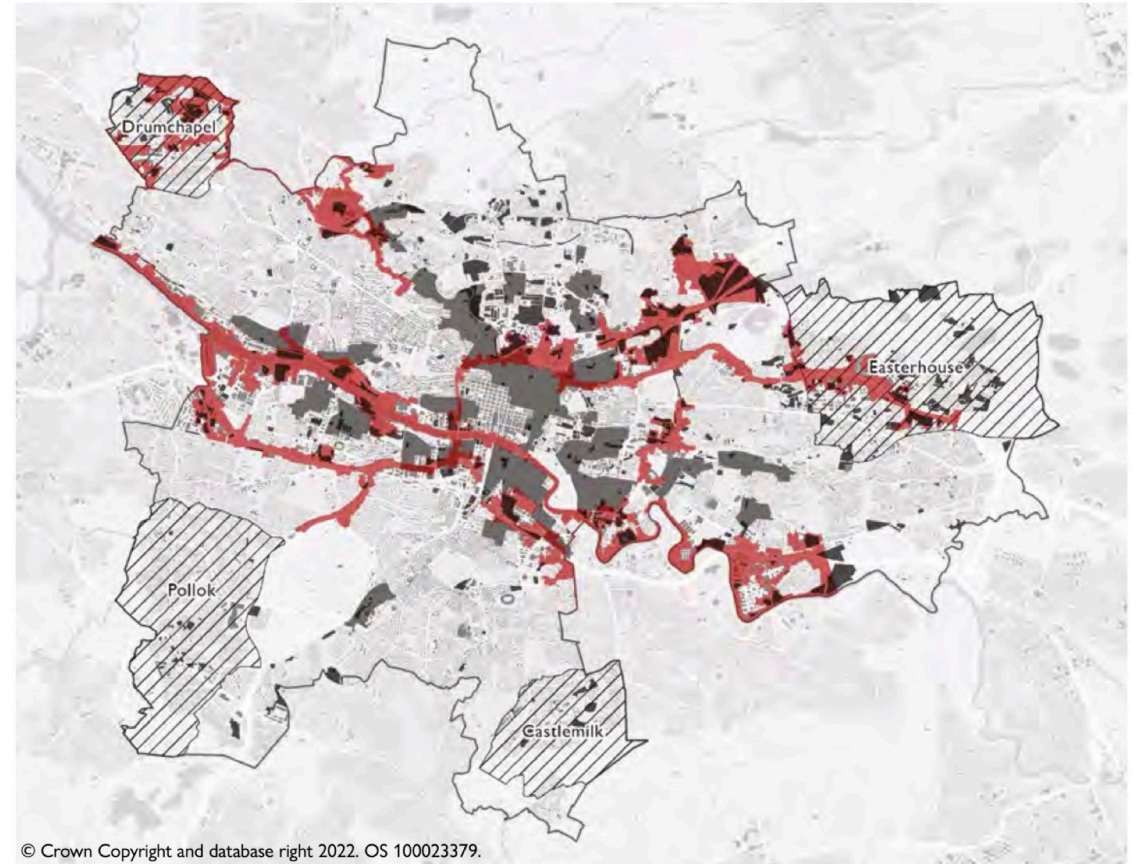
Source: Carmon (2019)

Source: Carmona (2019)

# The Importance of 'Place' – quality, value, attachment – OUTCOMES



Source: Glasgow City Council (2022):



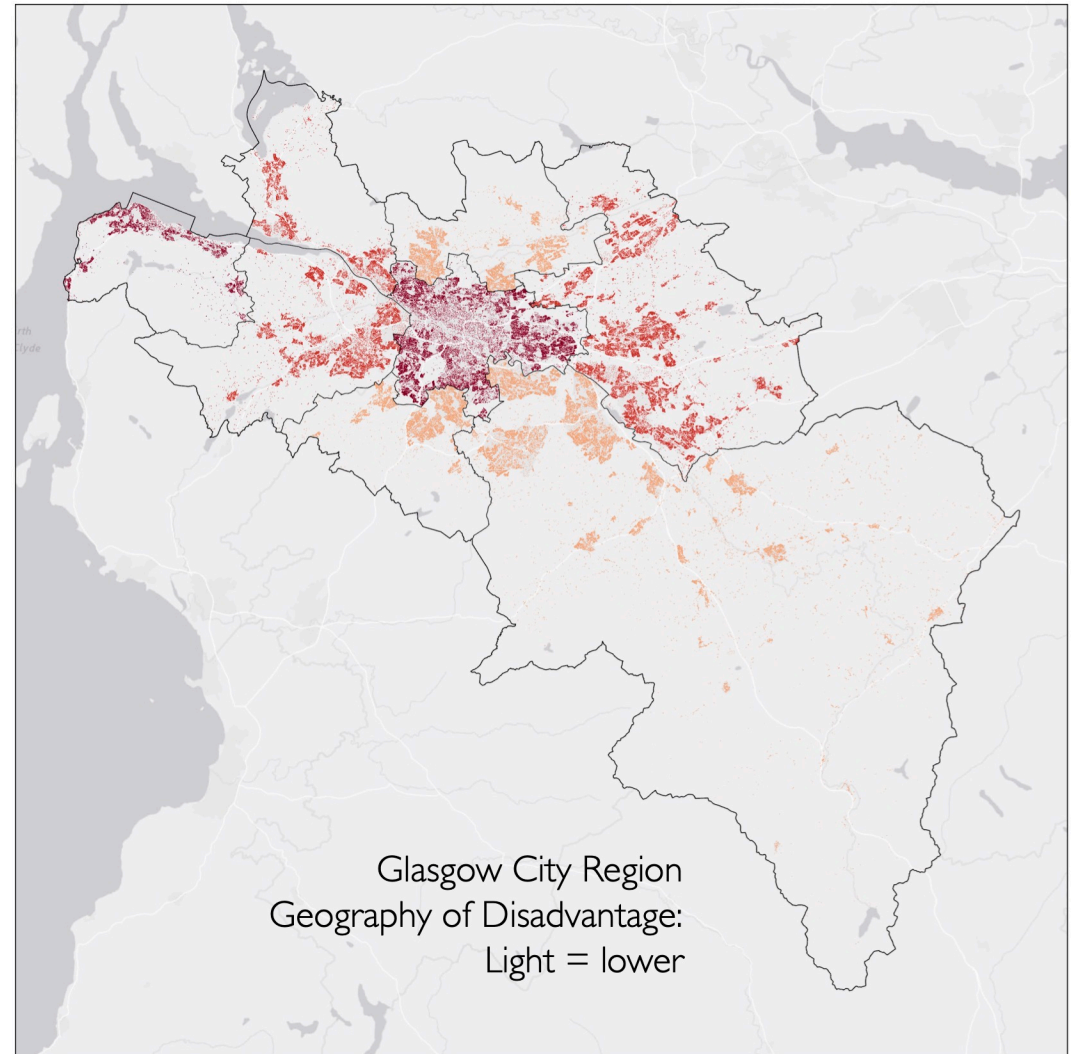
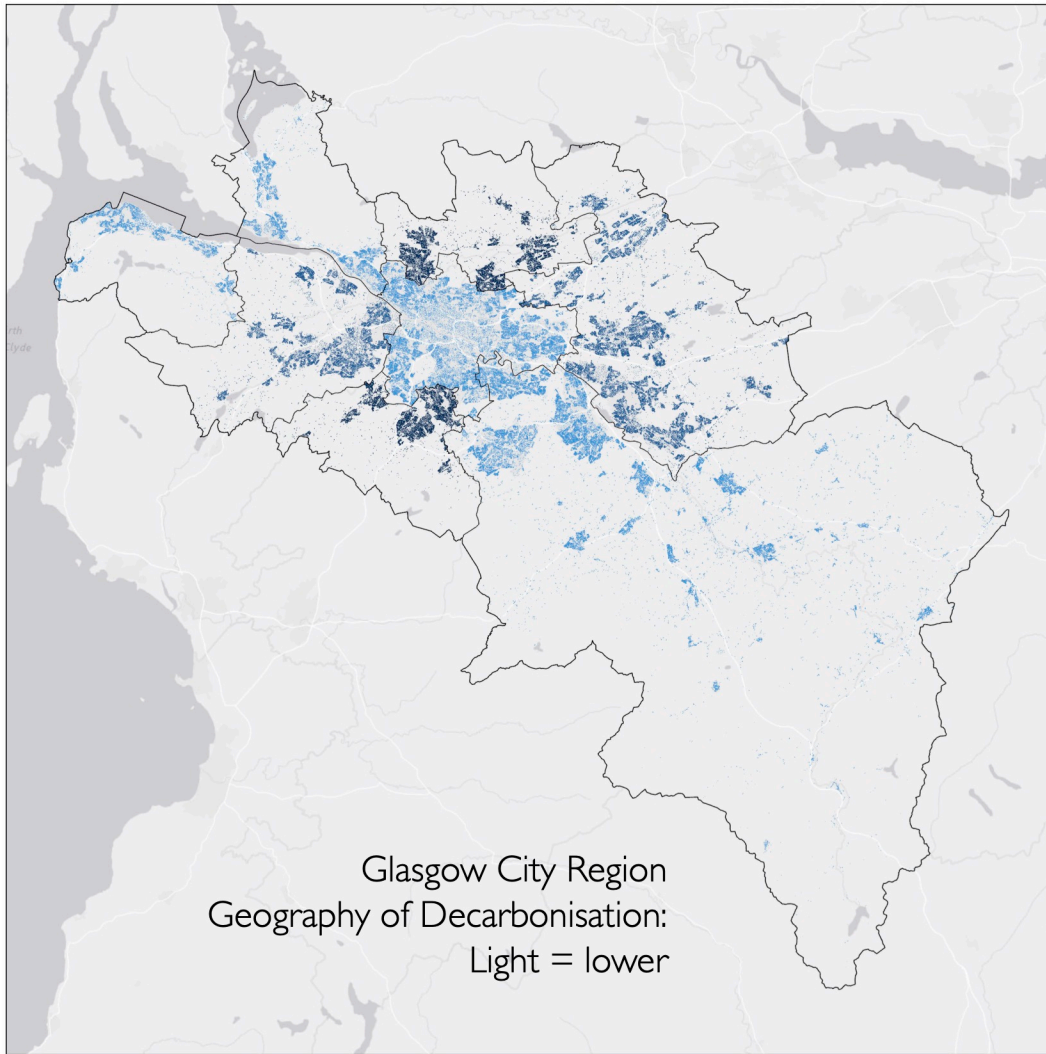
© Crown Copyright and database right 2022. OS 100023379.

Source: Glasgow City Council

The map shows the aggregate effect of motorway construction, demolition from comprehensive development areas and the vacant and derelict land from deindustrialisation.

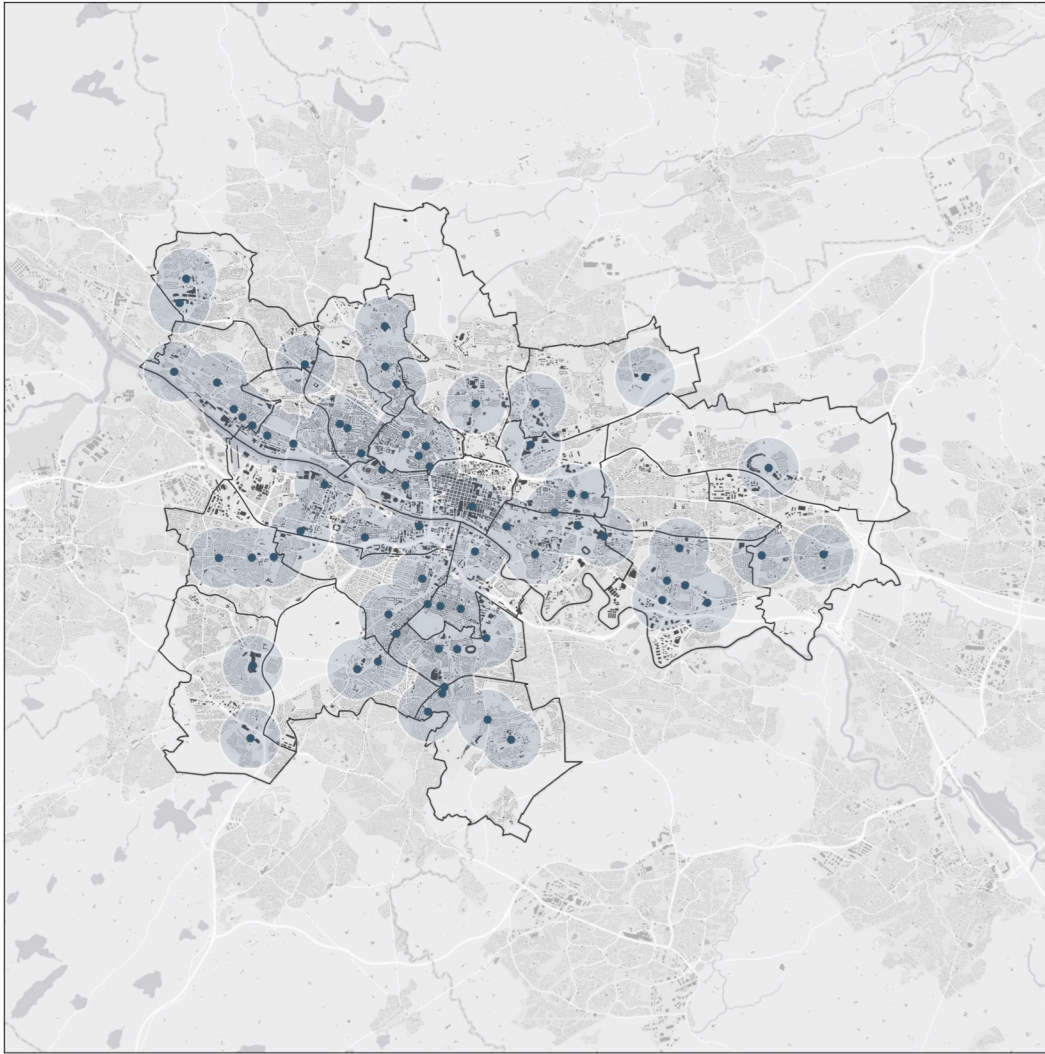


# The Importance of 'Place' – quality, value, attachment – OUTCOMES

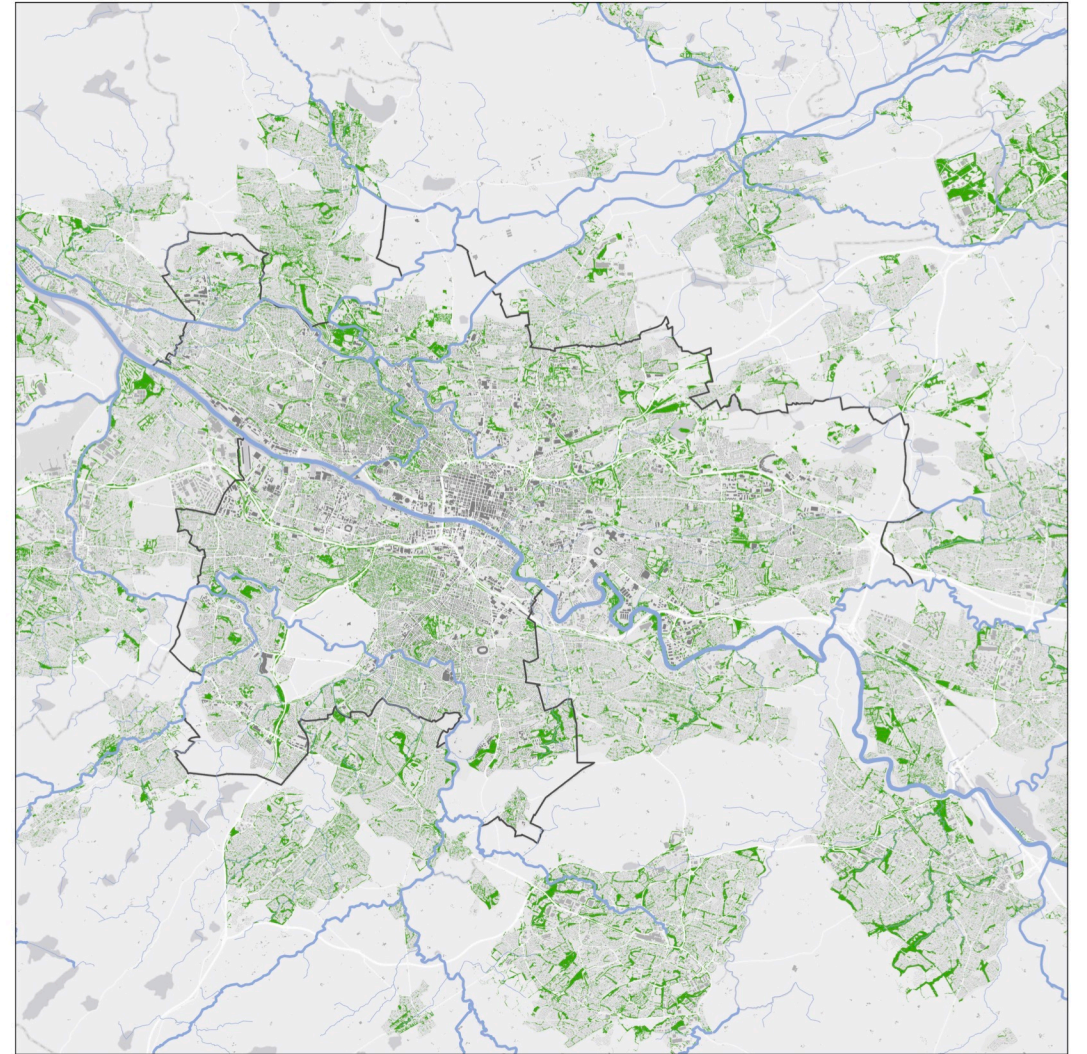




# The Importance of 'Place' – quality, value, attachment – OUTCOMES



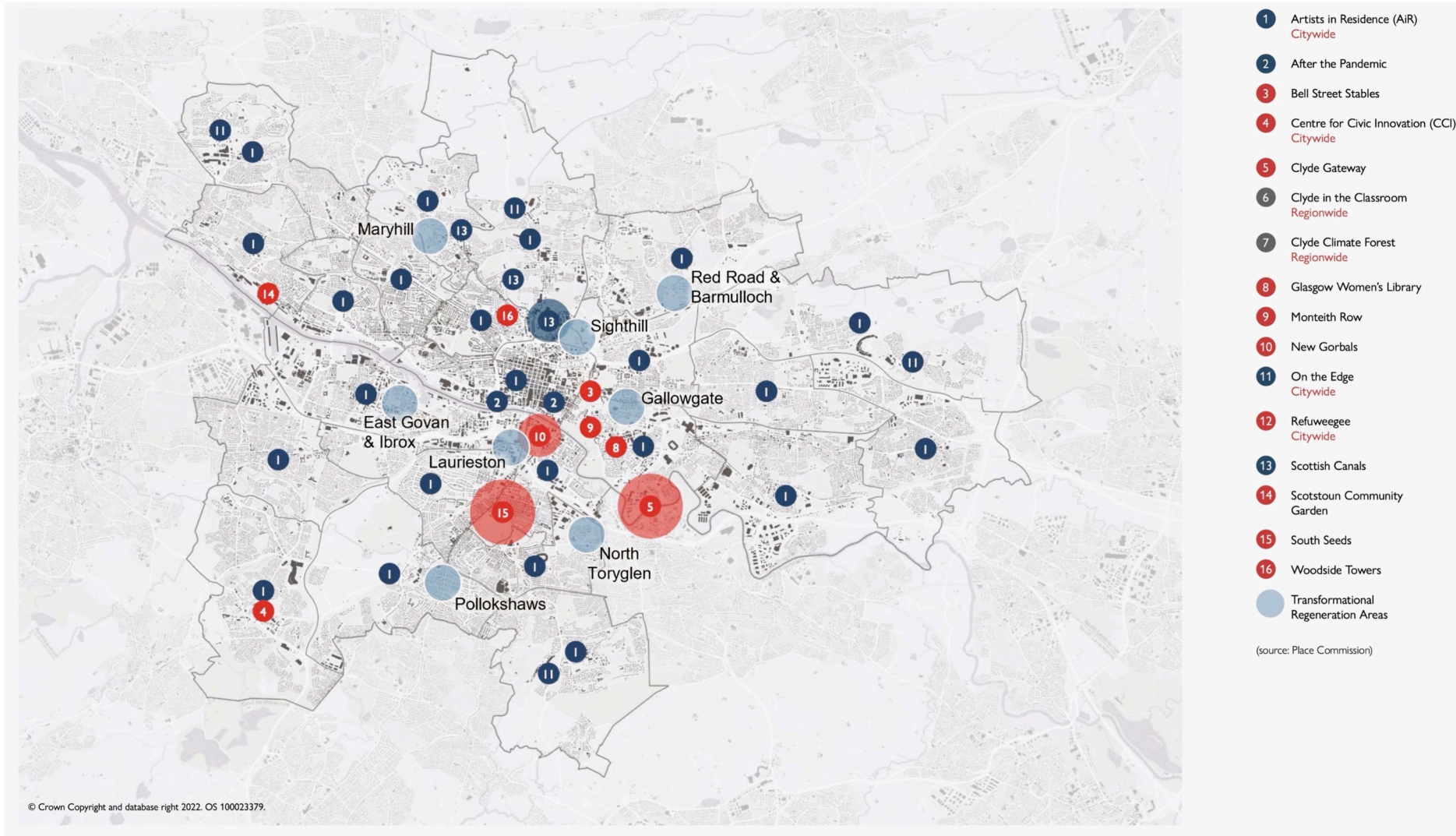
Glasgow City: Geography of Neighbourhoods



Glasgow City: Green – Blue System



# The Importance of 'Place' – quality, value, attachment – OUTCOMES





# The Importance of 'Place' – quality, value, attachment – OUTCOMES

Place Stories 1 – 8 (click on titles for further information)



## 1 \AiRI\

Artists in Residence is a city-wide project to bring engagement with the arts close to communities across each of the 23 wards in Glasgow.

**Place Credentials:** Community Engagement, Community Empowerment, Public Enterprise, Inspirational Intent, Education



## 2 \After the Pandemic\

After the Pandemic uses creativity and community to rethink our environments, reimagine our cities, and redesign our communities to be greener, more vibrant, and more resilient.

**Place Credentials:** Community Engagement, Community Activation, Climate Action, Partnership, Inspirational Intent



## 3 \Bell Street Stables\

Bell Street Stables is a positive example of how a historic industrial building can be restored for modern use.

**Place Credentials:** Excellent Design, Public Enterprise, Climate Action, Procurement



## 4 \CCI\

The Centre for Civic Innovation (CCI) is a citizen-centred design team within Glasgow City Council responsible for establishing a design-led approach to the understanding of societal shifts and civic experience within the city.

**Place Credentials:** Community Engagement, Community Empowerment, Public Enterprise, Excellent Design, co-creation, Education



## 5 \Clyde Gateway\

Clyde Gateway is an urban regeneration Company established to deliver significant social, economic, and physical change across East Glasgow and South Lanarkshire.

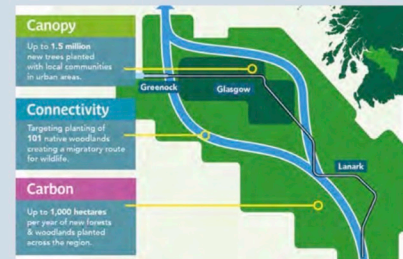
**Place Credentials:** Community Engagement, Excellent Design, Public Enterprise, Governance, Partnership, Procurement, Delivery, Longevity



## 6 \Clyde in the Classroom\

Clyde in the Classroom is a hands-on project which uses the life history of a native Scottish species, the brown trout, to promote awareness of river ecology among young people across the River Clyde catchment.

**Place Credentials:** Community Activation, Climate Action, Education, Delivery



## 7 \Clyde Climate Forest\

The Clyde Climate Forest is a project that aims to plant 18 million trees across Glasgow City Region and has the potential to benefit quality of life, quality of place, and wildlife habitats.

**Place Credentials:** Community Activation, Climate Action, Education, Delivery



## 8 \Glasgow Women's Library\

The Glasgow Women's Library is a leading charity and social enterprise that supports thousands of women across Scotland every year by coordinating and hosting a range of public events, services, cultural programmes, and learning opportunities.

**Place Credentials:** Community Empowerment, Public Support, Explicit Values, Inspirational Intent, Education

# The Importance of 'Place' – quality, value, attachment – OUTCOMES

Place Story/ Place Characteristic	After the Pandemic	AiR	Bell Street Stables	Centre for Civic Innovation	Clyde Climate Forest	Clyde Gateway	Clyde in the Classroom	Glasgow Women's Library	Monteith Row	New Gorbals	On the Edge	Refuweegeee	Scottish Canals	Scotstoun Community Garden	South Seeds	What If...?/ Scotland	Woodside Towers
Community Engagement	●	●		●		●	●			●	●	●	●	●		●	●
Community Empowerment		●		●		●		●		●		●			●		
Community Activation	●					●	●			●	●	●	●	●	●	●	
Volunteering					●			●			●	●		●	●	●	
Public Support			●	●	●	●		●	●	●				●	●	●	●
Private Initiative	●						●				●		●				
Social Enterprise								●		●		●	●	●	●		
Partnership	●	●	●		●	●			●	●			●	●	●	●	●
Co-creation	●	●		●	●		●					●	●	●	●	●	
Inspirational Intent	●	●	●	●	●		●	●	●	●	●				●	●	●
Explicit Values	●	●	●	●	●	●	●	●	●	●		●	●	●	●	●	●
Climate Action	●	●			●		●		●				●		●		●
Wellbeing		●	●	●	●	●		●	●	●		●	●	●		●	
Design Excellence			●	●		●		●	●	●	●		●	●		●	●
Scale	National	Each Ward	Site	City	Region	Area	Region	Site	Site	Area	Area	City	Area	Site	Area	National	Site
Agile Procurement			●			●			●	●			●	●			●
Robust Governance			●		●	●	●	●	●	●			●			●	●
Education & Learning	●	●		●	●		●	●			●	●			●		
Determined Delivery			●		●	●	●	●	●	●	●		●	●			●
Longevity					●	●	●	●		●					●		



# The SDGs are integrated & indivisible

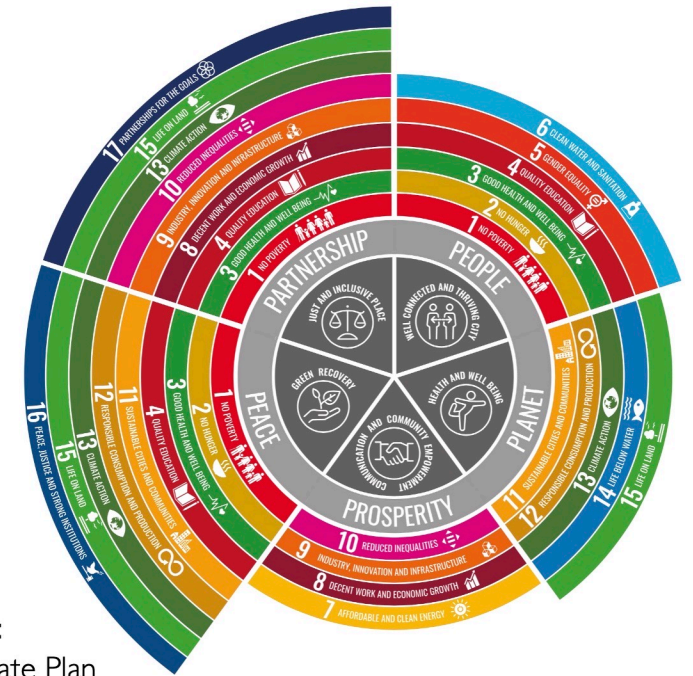
*They require vertical and horizontal integration*



**Source:**  
 Outcomes-focused  
 Policy Making in Scotland  
[www.nationalperformance.gov.scot](http://www.nationalperformance.gov.scot)



**Source:**  
 Glasgow's Climate Plan  
 Response to the climate & ecological emergency  
[www.glasgow.gov.uk](http://www.glasgow.gov.uk)



**Prof Brian Evans PhD**  
**GLASGOW**  
**URBAN LAB**  
**THE GLASGOW**  
**SCHOOL OF ARCHITECTURE**

*Inclusive, safe, resilient and sustainable cities require sustainable and inclusive urban design and architecture*