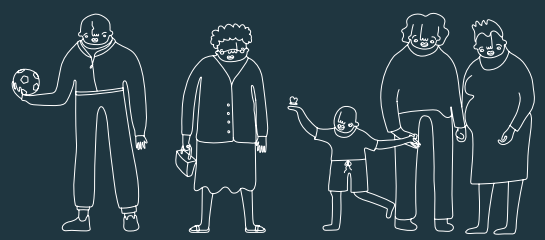


# COLLABORATIVE FUTURES



Kirsty Ross and Dr Marianne McAra

Collaborative Futures is an annual project delivered at The Glasgow School of Art, which brings together a cohort of final year design students and early career design graduates to collaborate with an external industry partner. The 3-phase pedagogical model, now in its sixth iteration, has been implemented in a range of contexts. The latest iteration (2019-2020) was in collaboration with the Glasgow City Council and explored and prototyped future-based and citizen-centred scenarios surrounding data experience, set in the context of Glasgow 2030.

## 01 DISCOVER & DEFINE

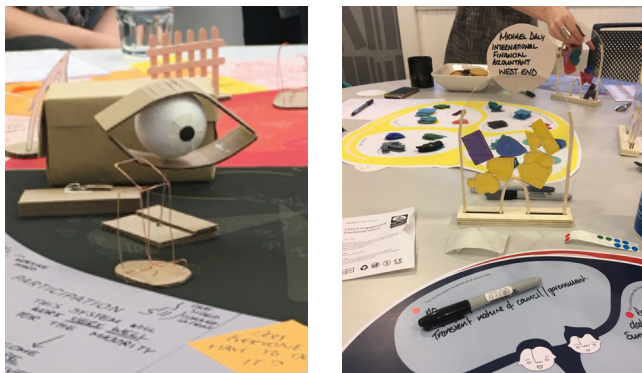


Scoping the context through combining a range of quantitative and qualitative research methods to identify key insights in the creation of a visual data bank and a set of Research Cards.

## 02 DEVELOP

Translating the research themes into a family of speculative knowledge artefacts: a physical future-focused world, a suite of future citizens who would populate neighbourhoods within the world, and a set of scenarios that characterise the citizens' behaviours, attitudes and values and to narrate interactions between them.

These knowledge artefacts are used as speculative tools in the design of creative engagement workshops to further explore and co-define the research and design directions with present-day citizens and stakeholders.



## 03 DELIVER

Designing a fully realised suite of knowledge artefacts and a set of design recommendations and indicative design directions for the project partner.



## PROJECT LEARNING OUTCOMES

- Undertake a research-led, person-centred design process
- Manage multidisciplinary collaboration
- Prototype future-focused artefacts
- Communicate the design process to a range of audiences
- Critically evaluate the design outcomes

For more information, visit the project website: <https://cf.gsainnovationschool.co.uk>

INNOVATION  
SCHOOL  
THE GLASGOW  
SCHOOL OF ART

