

# Shadow IN THE OF ST KILDA



---

Identity and Island population loss in the Outer Hebrides

**INSTITUTE**  
**OF DESIGN**  
**INNOVATION**  
**THE GLASGOW**  
**SCHOOL OF ART**

NORDIC RURALITIES  
UNIVERSITY OF AKUREYRI 2016

Dr. George S Jaramillo  
Glasgow School of Art

View of St. Kilda, 2015

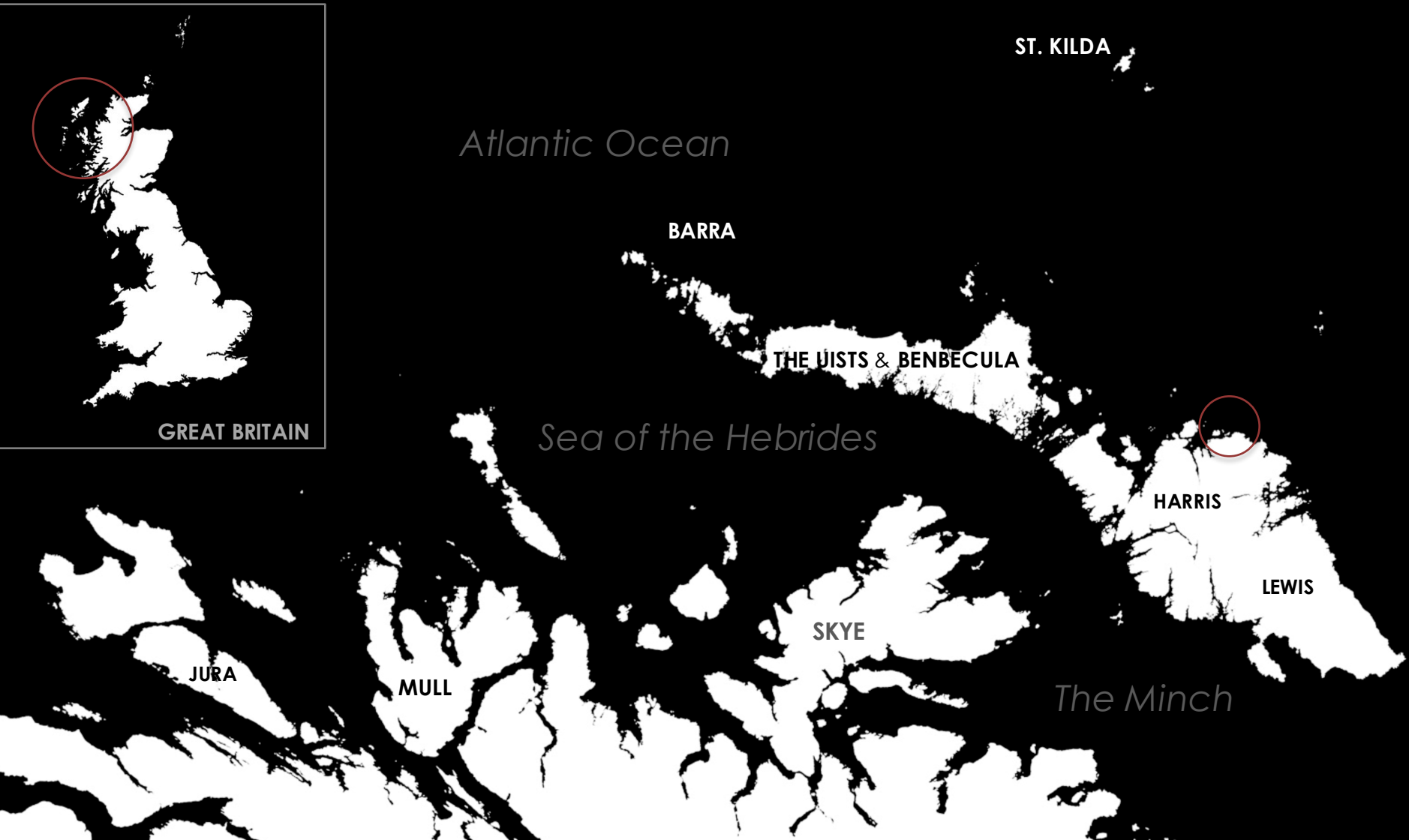


Photo: F. Fullerton-Pegg





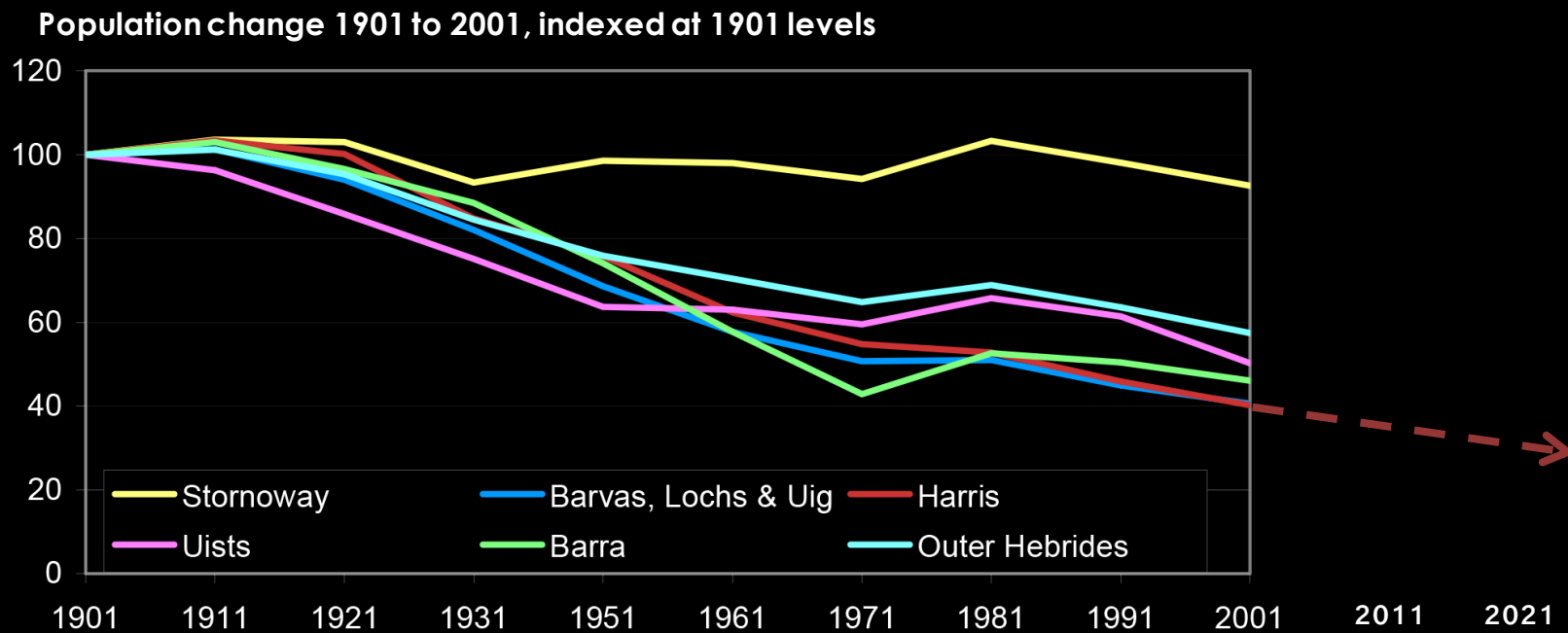
Ruins of a farmhouse, North Uist, 2015



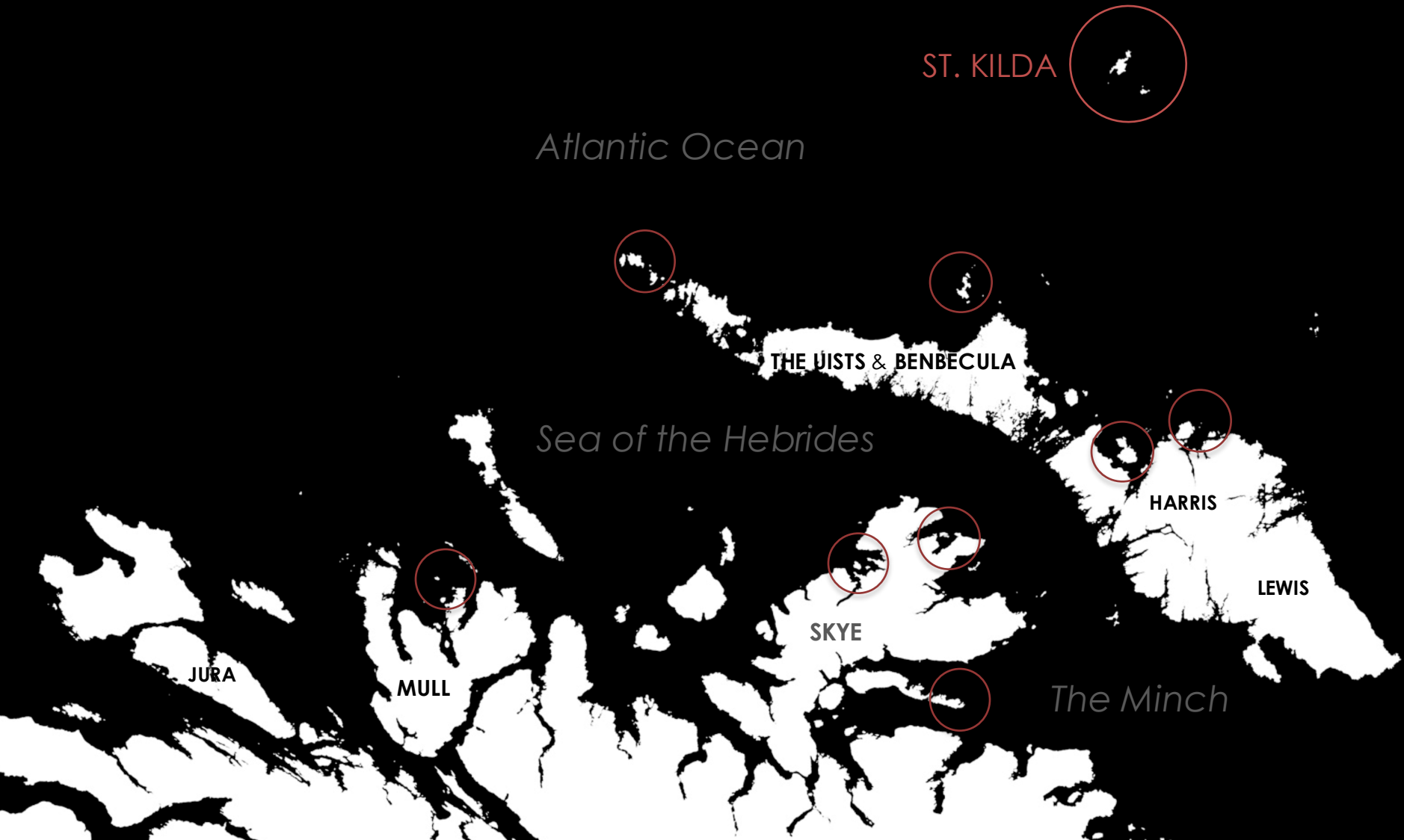




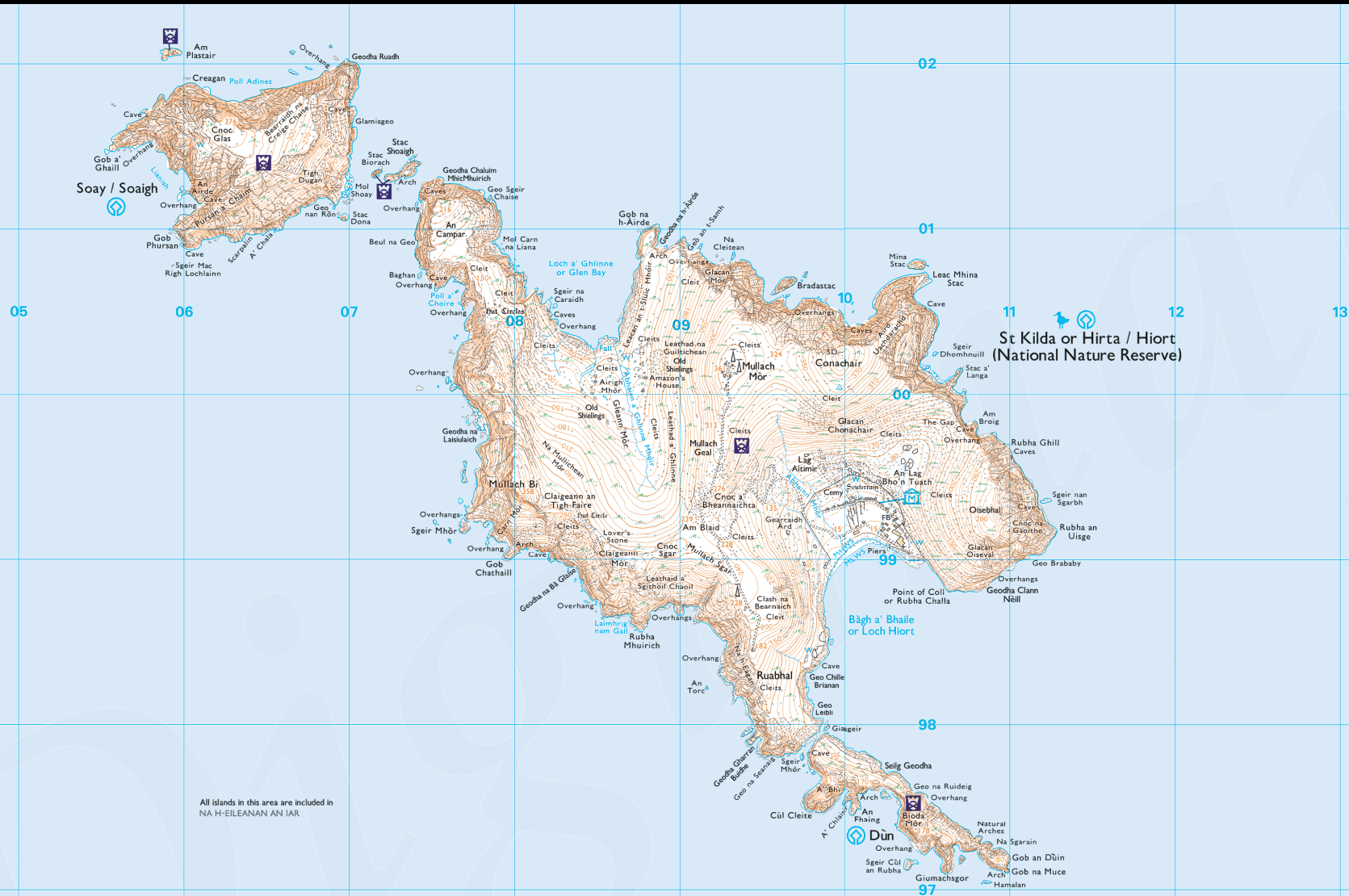
A large reproduction of one of the Lewis Chessmen near the location of its original find, Uig, Isle of Lewis, 2015



Source: GROS 2001











One of the islands many cleats with Village Bay in background, 2015 (Fullarton-Pegg)

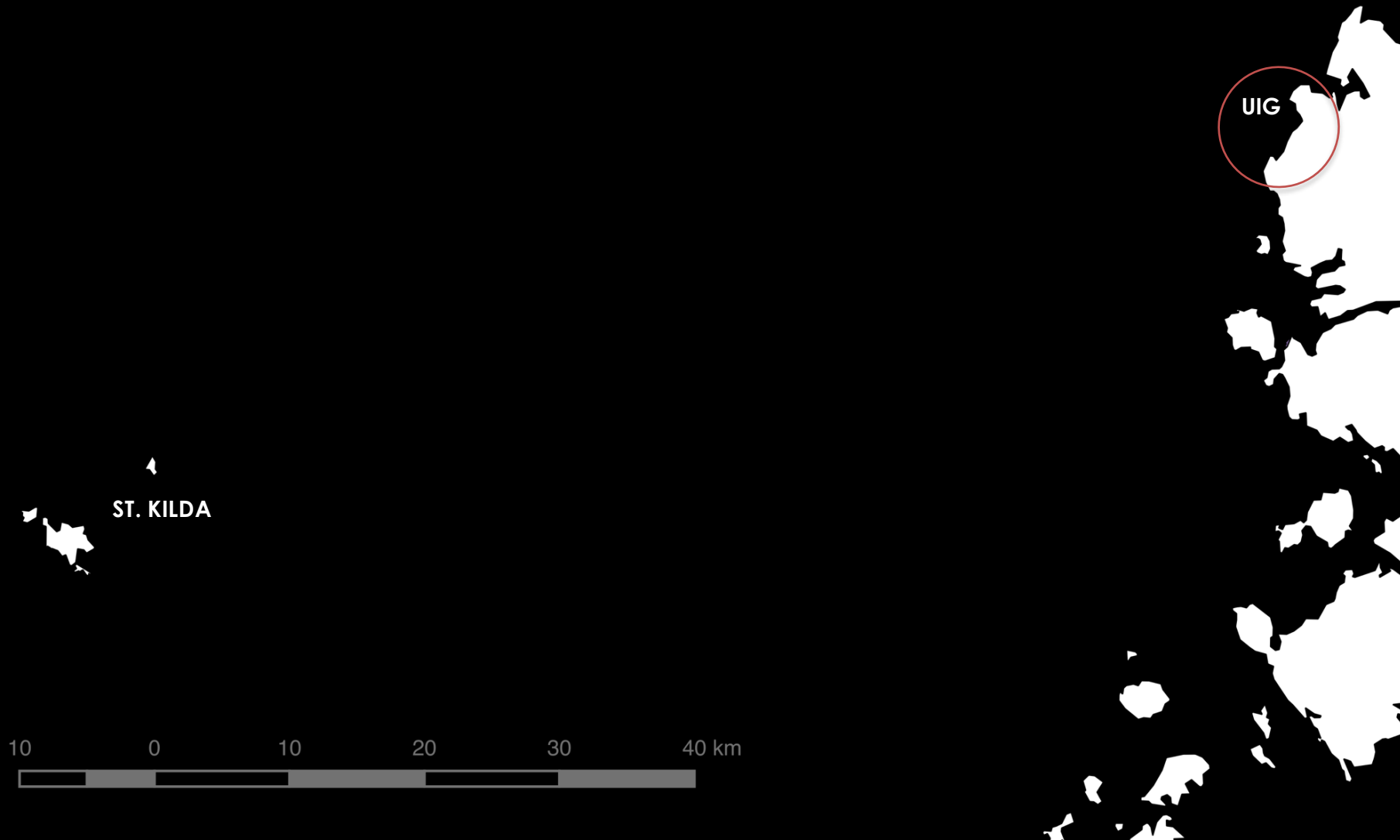


# islands 'at the edge'



View on island towards one of the escarpments





# Jonad Hiort • St. Kilda Centre

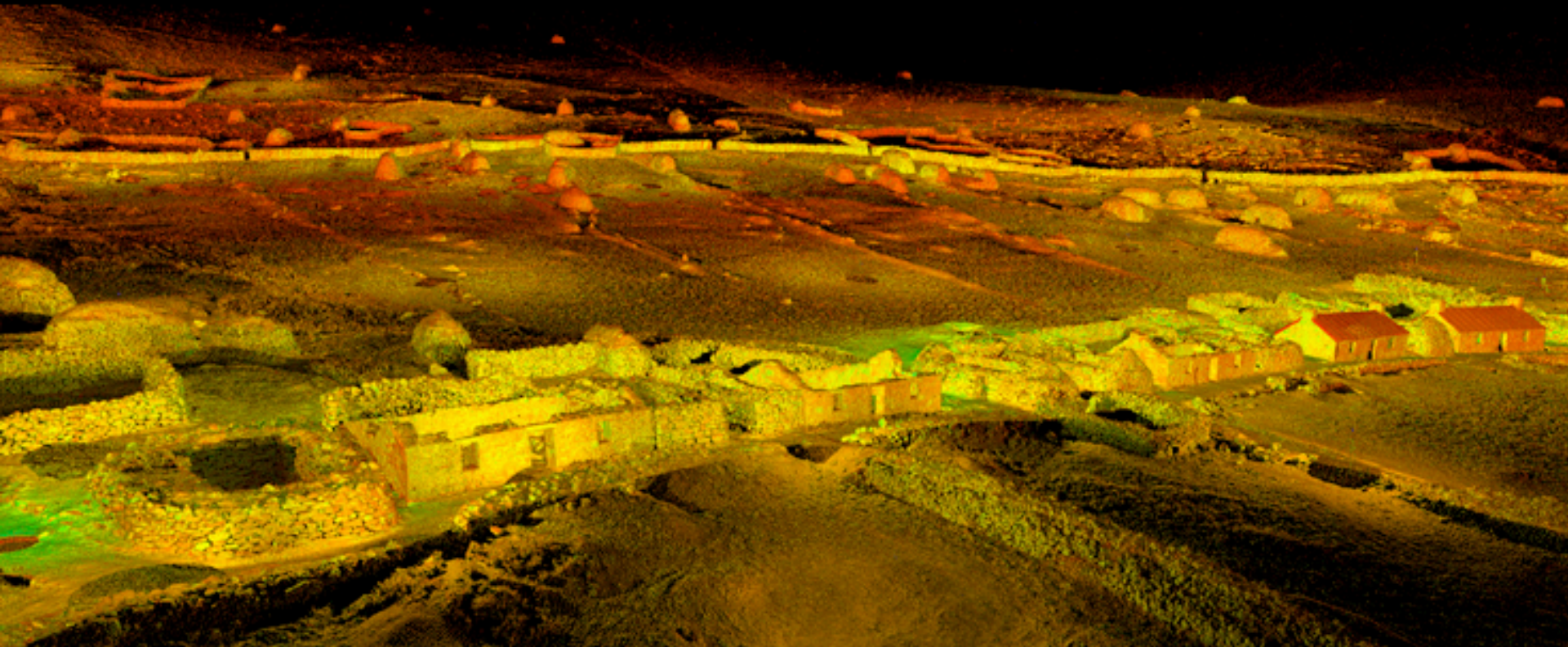


Uig, on the Isle of Lewis, Outer Hebrides



St. Kilda Opera, 2007





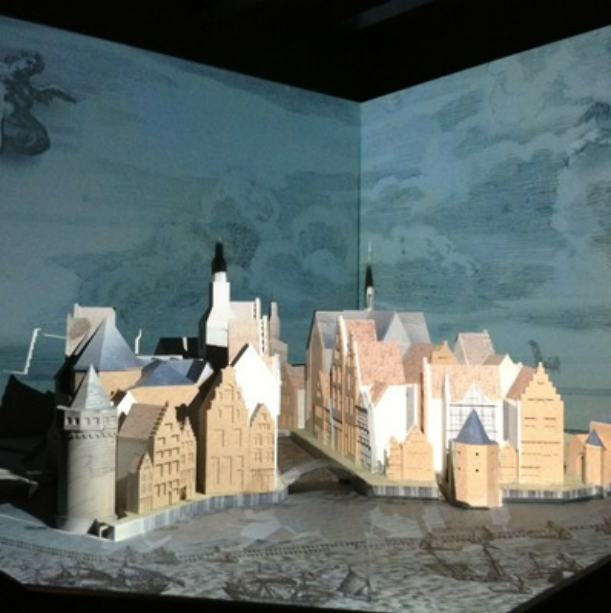
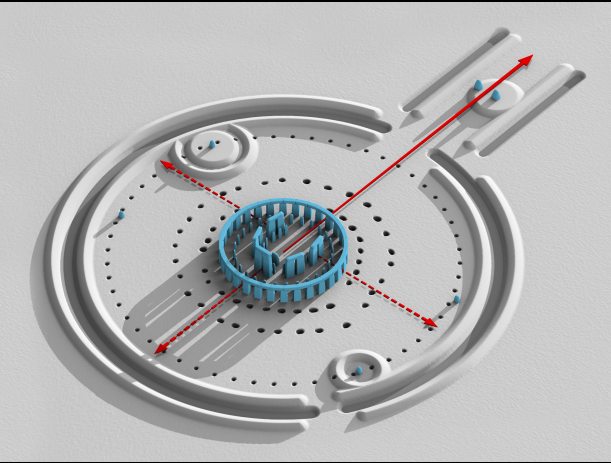
LIDAR scans of central village, CDDV







# heritage interpretation & visualisation



# Stimulating innovation in the 21<sup>st</sup> century from rural and distributed regions through making and place

## **Place:**

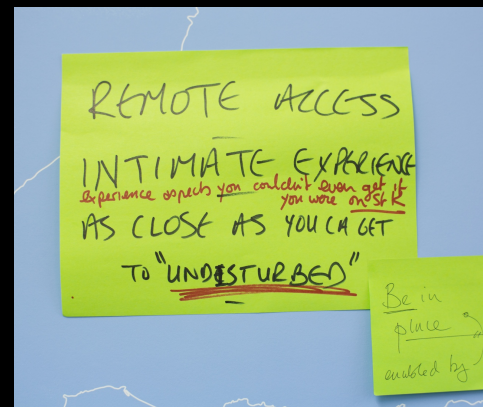
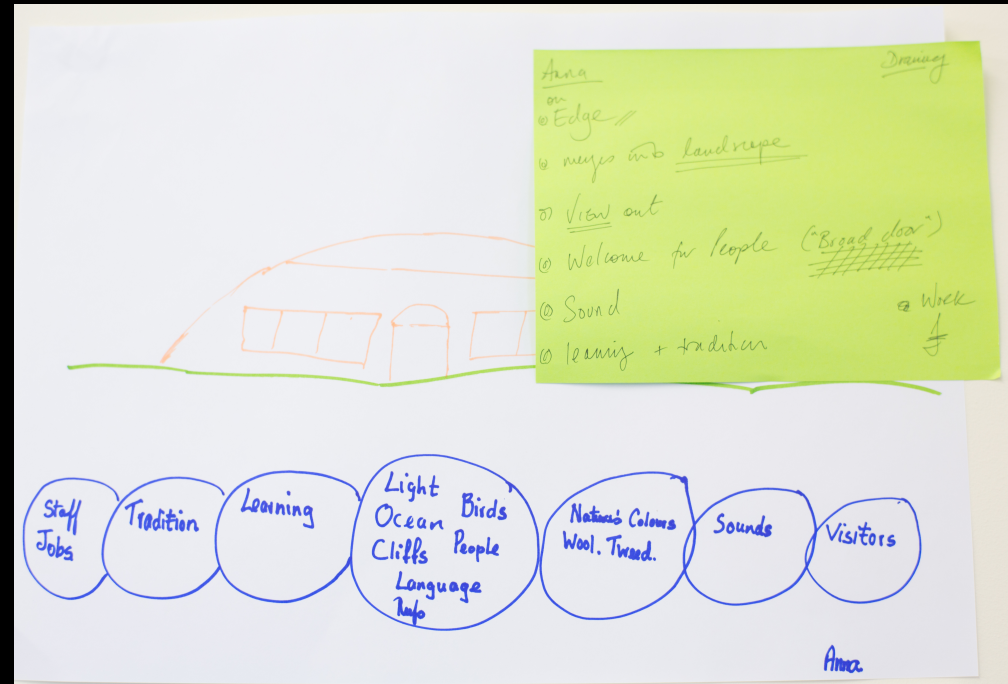
Accessing and promoting local environmental awareness

**Folk:** Driving technology from need

## **Work:**

Creating distributed enterprises that support new lifestyles





Collection of initial work with local communities

# ‘negative capability’









We aim to establish, @ Margurstaeth, llig ty (see?) an internationally renowned "centre", Joned Hiorth which celebrates, shares, and draws upon, the unique attributes of St. Kilda. To do this, we will address untapped opportunities in local, national and international tourism, and, in particular, the emerging market for world-heritage tourism, in which we would aim to play an exemplary and leading role. This, in turn, rests on our superior abilities to access, interpret and engage others in the natural, cultural and marine heritage of St. Kilda - in order to attract and inspire visitors on the one hand, and, on the other, engage in dialogue with key partners to secure support, funding and ~~their~~ portfolio of core capabilities required for the sustainable development and operation of Joned Hiorth



