



THE UNIVERSITY *of* EDINBURGH

# extractive geographies

enacted lives

George S. Jaramillo

**1<sup>st</sup> Annual ELHN Conference**

Historical Cultures of Labour  
under conditions of Deindustrialisation

**14 December 2015**





THE UNIVERSITY of EDINBURGH  
School of GeoSciences

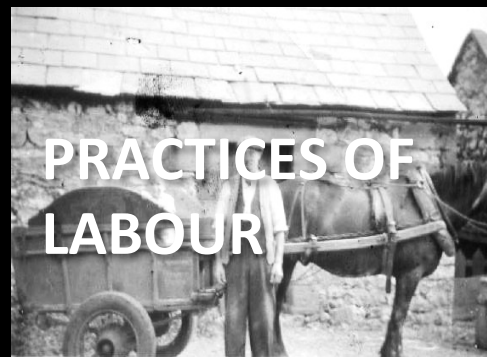


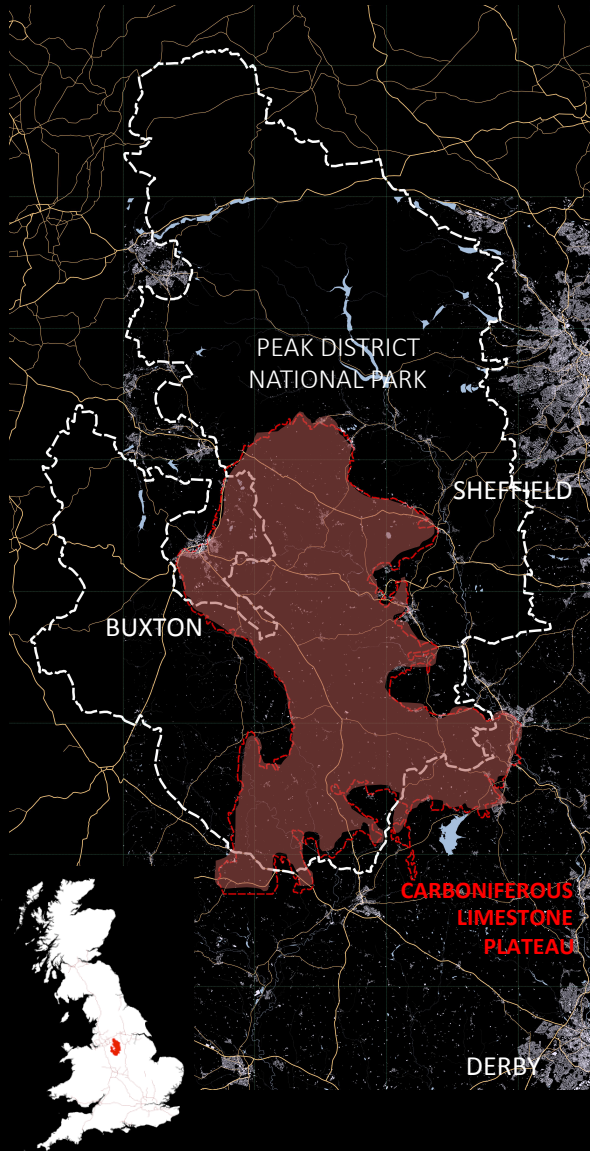




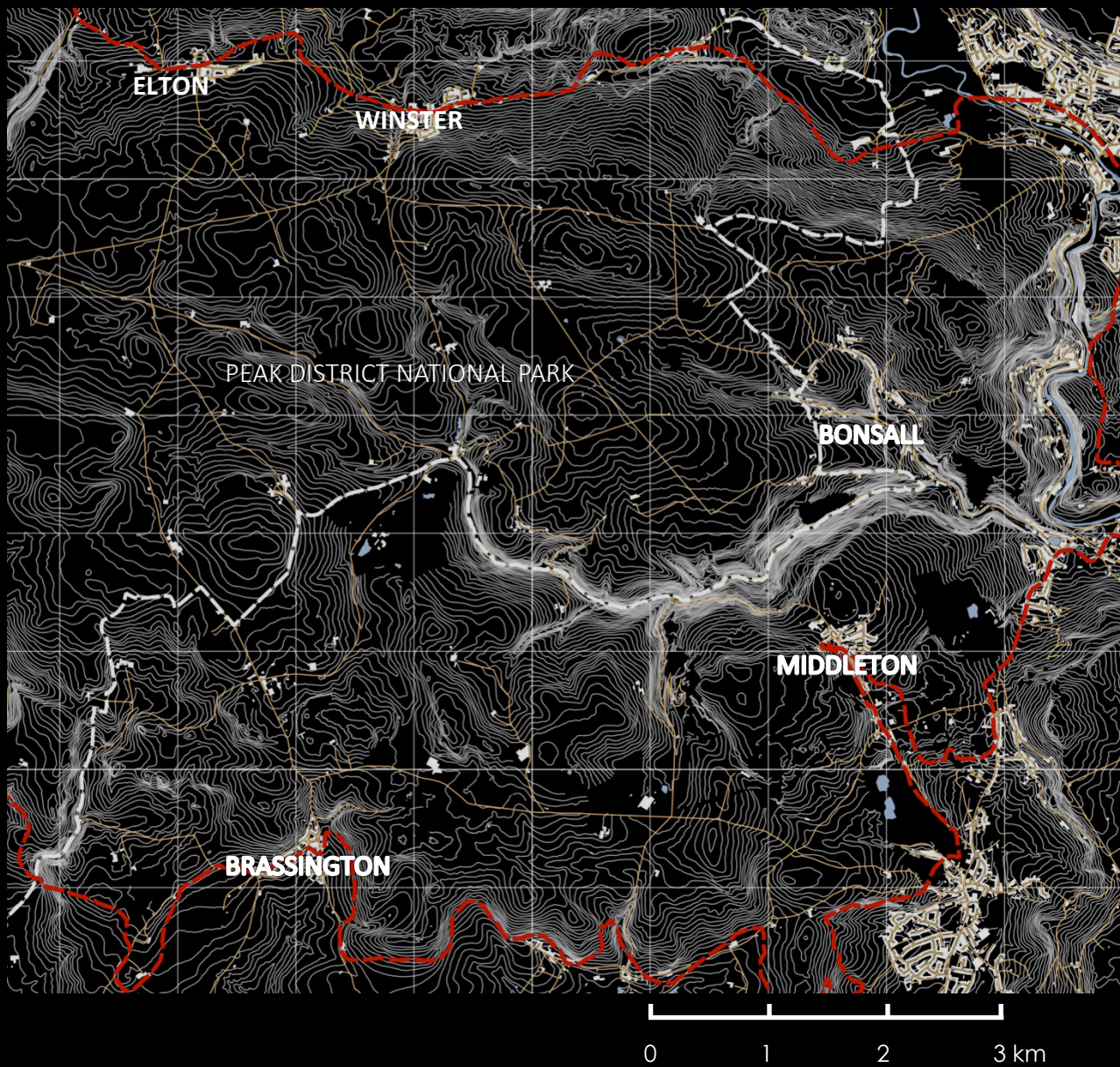
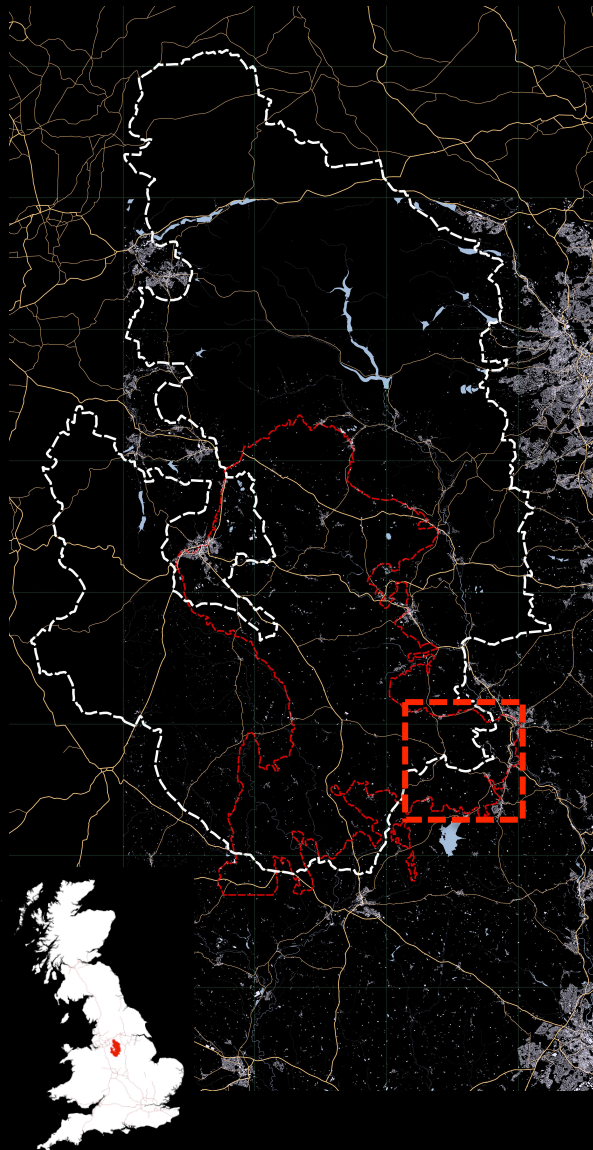
THE UNIVERSITY of EDINBURGH  
School of GeoSciences

## objectives



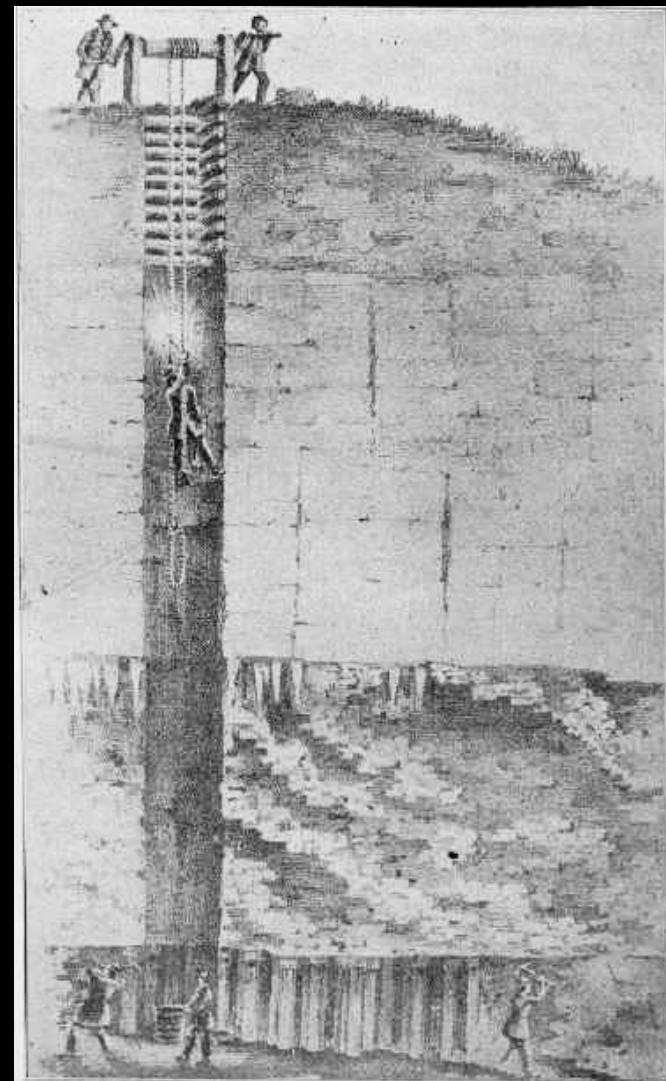
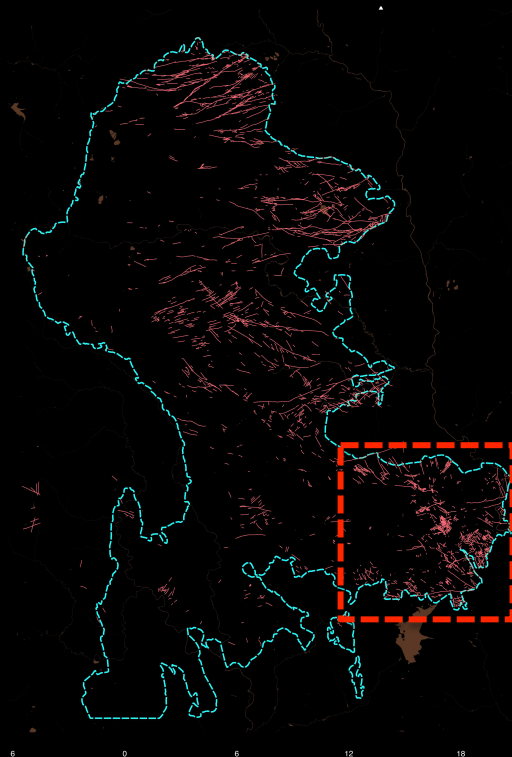








Capped Mines, Carsington Pastures, 2013 (Author)



Whitelow Mines, Bonsall Leys Farm, 2014 (Author)





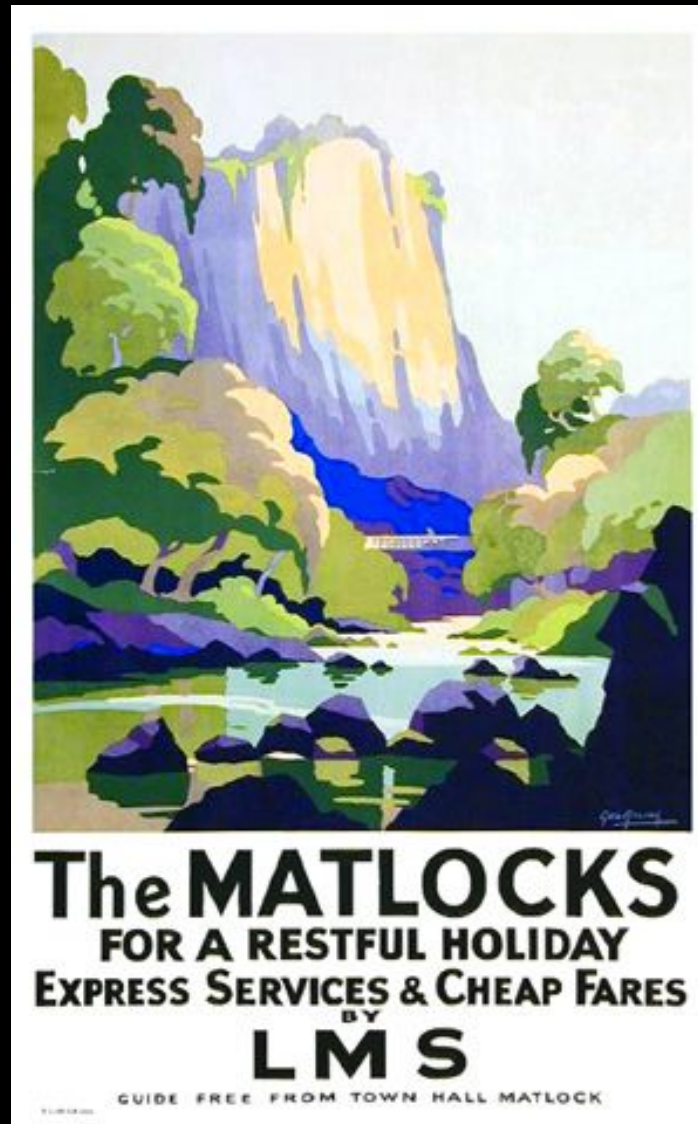
THE UNIVERSITY of EDINBURGH  
School of GeoSciences

perceptions

Matlock Tor by Moonlight, Joseph Wright, 1778 (Google Art Project)











View of Bonsall from nearby fields, 2004 (Author)





Public footpath sign, Bonsall Moor, 2013 (Author)



New 'accessible' gates, replacing old stone stiles, 2013 (Author)

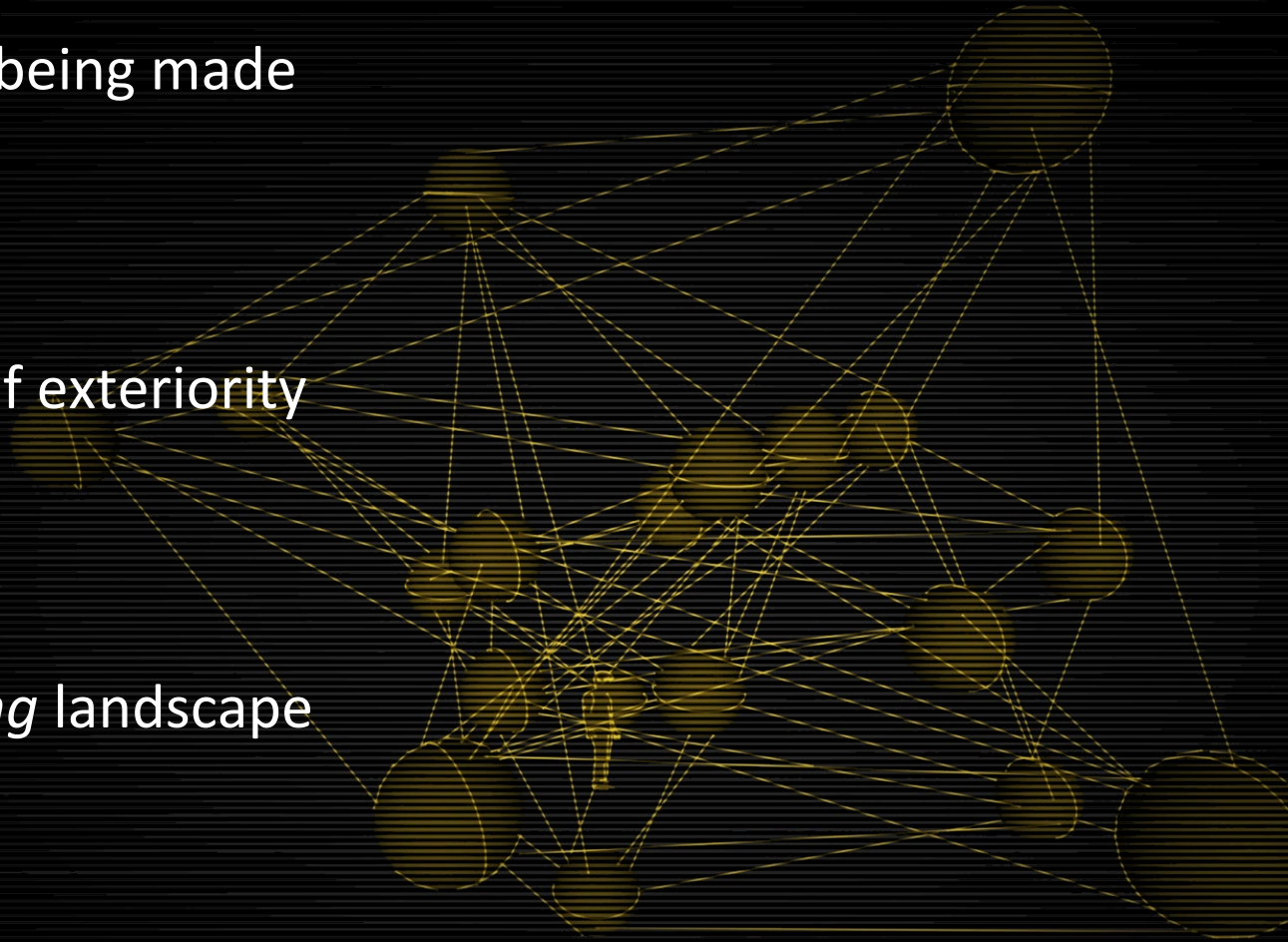




Made and being made

Relations of exteriority

*unforgetting* landscape







THE UNIVERSITY of EDINBURGH  
School of GeoSciences

# Vital materialism











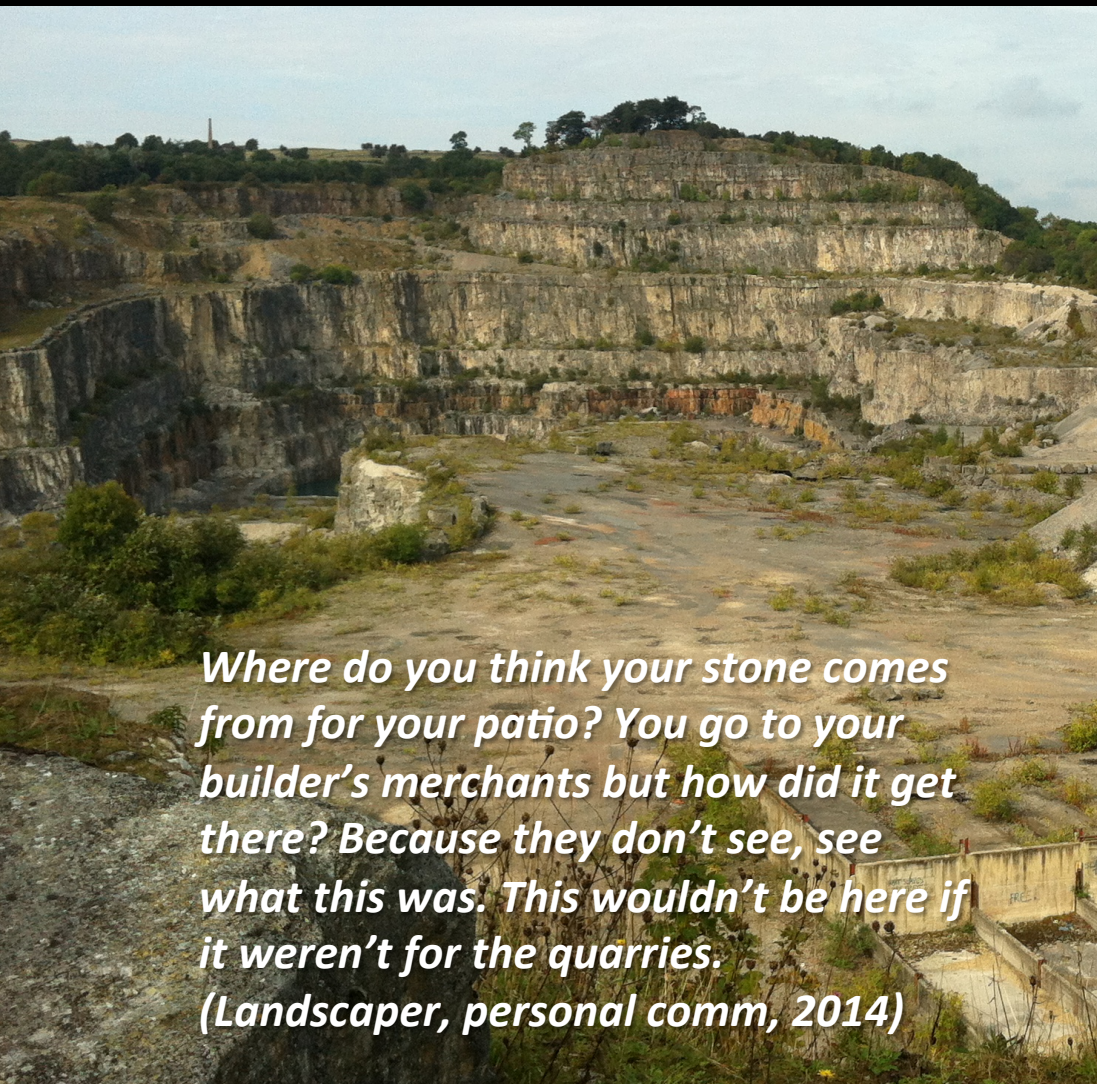
THE UNIVERSITY of EDINBURGH  
School of GeoSciences

**sonorous presence**

Longcliffe Quarry, Grangemill, 2014 (Author)











Potter Farm, Bonsall, 2013 (Author)







# milk assemblage







THE UNIVERSITY of EDINBURGH  
School of GeoSciences

## nature and culture







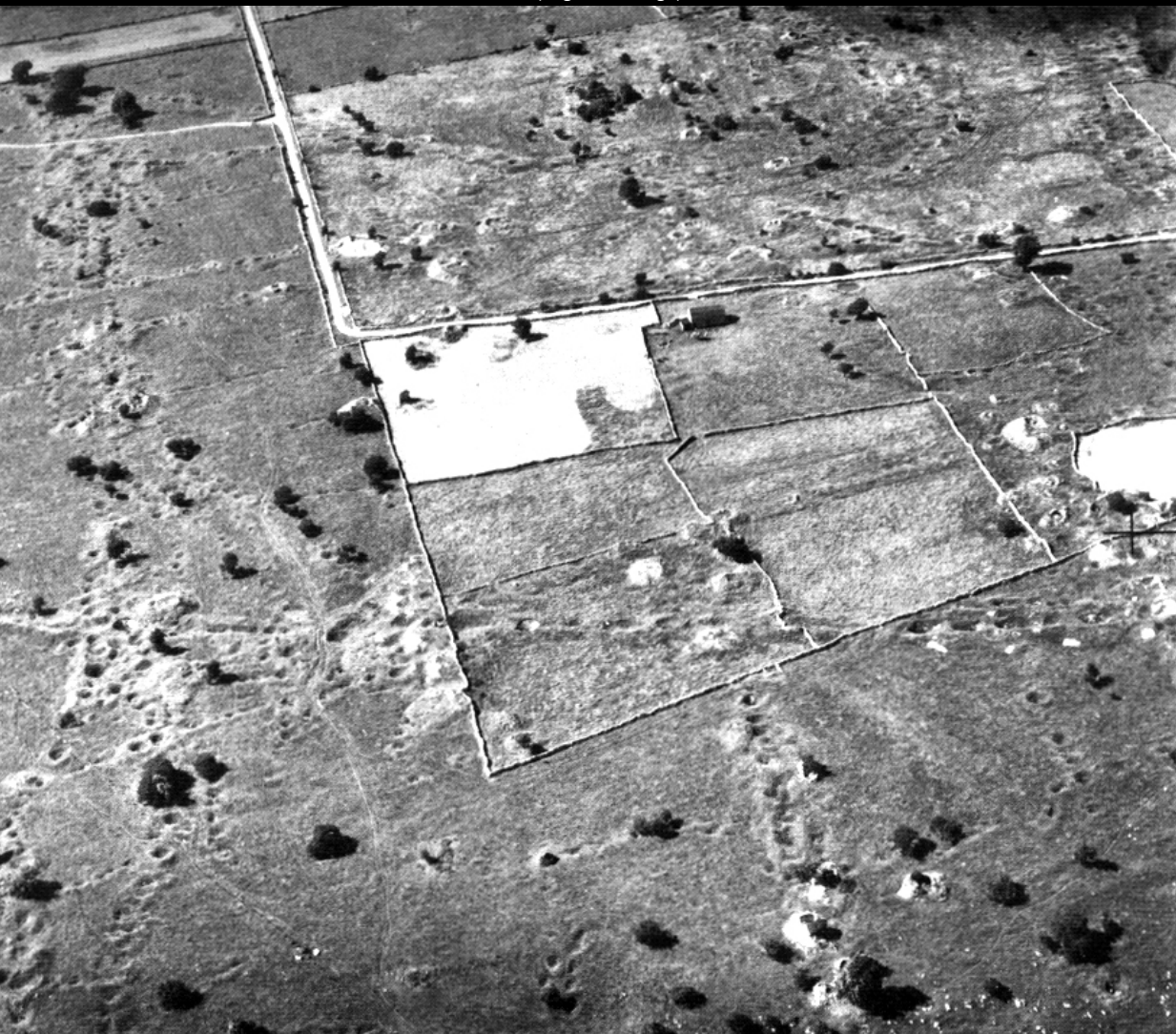








Aerial view of remnants of Bonsall Mines, Bonsall Moor, 1996 (English Heritage)



Ordnance Survey section, Bonsall Moor (Ordnance Survey SK2657)







THE UNIVERSITY of EDINBURGH  
School of GeoSciences

# A new political economy of things and landscape







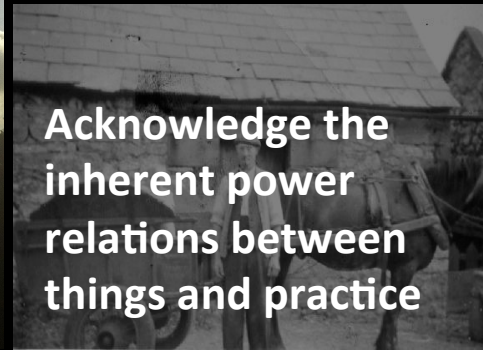
Working laboured  
and performed  
landscapes



Landscape as  
assemblage can  
recover the alternate  
laboured narrative



Acknowledge the  
inherent power  
relations between  
things and practice







*Nothing ever stays static with the land ... and  
the landscape never does. ...and we could  
actually have an industrial landscape again  
that actually generates and does something  
useful ...*

*(Former farmer, personal comm, 2013)*