

Psychic Derivé





Ross Sinclair
'We Love Scotland'



original location of 'We Love Scotland'

Psychic Derivé
Merchant City Festival

Glasgow
24 & 25.07.2010

Psychic Dérive – Glasgow – July 2010, Commissioned by the Merchant City Festival. Part pub-crawl, picnic and ghost tour, a 3 hr forensic foray into the traces of artists interventions and other bits of ‘secret history’ across the city. Battery-operated slide-viewers handed out, filled with images of previous artworks, allowing each participant of the dérive to peer into the past. At each location on the walking tour, McCaughey narrates the story of the artwork, as well as encouraging participants to discuss the associations and history of each work, embodying a sense of what is / was there.

SPACE INVADER

Location: Union Place
Date: 27 March / 1 May 1989
Artist: Ian Kettle & Bruce Mather

John Kettle and Sara Mather were asked by Glasgow Tramways, one of five commissions in 1989 to make a work out in the city and represent Tramway which it was closed for renewal.

The result was the amusing Space Invader that lodged the city in Union Place, appearing to have grown or just landed and suggesting the possibility of it or some other piece that might be involved daily like so much of the work here, the work will be designed from memory and is a hard to find as it is a city work. A cat leapt for a brilliant work.

Map location 18

YOU TALKIN' TO ME?

Location: Central Station
Date: 1987
Artist: Bob Coles

Bob Coles' "You Talkin' to Me?" - Quotes from popular film appeared in night markets on the adjacent advertisement notice on the right hand side of the information display. The most common reference came in black boxes but the text were not attached. The notice on the board declared "I am a 3000 computer" as people carried for their own digital work.

The double take factor was a joy to behold.

Map location 17

POLE BENDER

Location: Mitchell Street
Date: 2018
Artist: anonymous

For many years this anonymous individual has been collecting images around here and broken signs in time.

He asks passers by to take a photograph of him, as the project finished at Arch Post Mander and Sign Advertisement.

This image taken recently for your attention, marks the first time as over two years and six or seven corners, this has been by your observation by the police.

Map location 18

HORSE CARRIES ITS OWN PLINTH

Location: GDNH
Date: 1989
Artist: Jonathan Monk

A response to the equestrian statue erected in 1844 of the Duke of Wellington, which stands outside GDNH and is usually seen with a traffic cone on its head. For many years the sculpture, regularly moved cones, only for them to be replaced. People notice the cone disappeared Glasgow's sense of humour and it is a much part of the city as well as the famous buildings or houses. The equestrian statue of having a horse like because the continuing work is not an object. Peter often in available technique of concealing ideas and opinions that seem hidden within, just beyond the scope of our day to day work.

Map location 19

GLASGOW CANDELABRA

Location: Miller Street
Date: 17th November 2008
Artist: David Beckett

Beckett installed a colourful candelabra of light made from shiny materials and named it in the name of Glasgow. The candelabra was made of a single iron city cast to match Glasgow's famous 19th century towers. Beckett has a statement in the story of colour and how it is used in the urban environment.

Map location 20

CAPITAL OF CULTURE

Location: Virginia Street
Date: 1989
Artist: Rex Buxton

Location: citywide distribution

Many artists retained the heritage of the City of Culture and retained that the sculpture was replaced. Calliging concerned that the sculpture was replaced. Calliging concerned that the sculpture was replaced.

Map location 21

PET BURIAL

Location: Buchanan Street
Date: 1989
Artist: Laura Lee

Small grey, black, red, etc. each created in small concrete blocks and buried in the foundation of new office blocks in Glasgow.

The work began in a Church 4th. Rex Buxton from Glasgow. Rex Buxton from Glasgow. Rex Buxton from Glasgow.

Map location 19

LETTER-TWOCKER

Location: Hutchison Street
Date: 1984
Artist: James Thornhill

James Thornhill, LETTER-TWOCKER 1984 (Pictorial site, 3 contemporary, covered, network and down). Thornhill installed round painting letters from signs and then re-creating his own words. "With the Queen's Consent".

Map location 21

THE FESTIVAL OF BORROWED LIGHTS

Location: Hutchison Street
Date: 1989
Artist: Teresa Szymka & Peter McCaughey

"The Festival of Borrowed Light" 1989. Location: 3rd Street across Glasgow City Centre. The work was located on the facade of the City of Culture's local government building and sought to suggest the possibilities of network, but not necessarily the physical device. The work used and underground space was triggered by switching systems to traffic signs, the project was for 2 years.

Map location 21

WE LOVE REAL LIFE SCOTLAND

Location: John Street
Date: 15th January 2008
Artist: Rex Buxton

"We Love Real Life Scotland" was a sign light installation commissioned for Glasgow's Royal Festival of Light in 2002.

Map location 21

ERECTION PIECE

Location: George Square
Date: 1989
Artist: Jon Cateman

A very private effort to breathe in honour of Glasgow City Chambers.

Map location 8

THE BATTLE OF GEORGE SQUARE

Location: George Square
Date: 15th January 1989
Artist: Glasgow Workers

The Battle of George Square (also known as Bloody Friday and Black Friday) one of the most riots in the history of Glasgow took place on Friday 15th January 1981.

Map location 8

WHITE BIKES

Location: George Square
Date: 15th April 1981
Artist: Glasgow Workers

The original White Bikes was an artistic but transport culture movement. The original White Bikes was an artistic but transport culture movement.

Map location 8

CANCELLED

Location: Buchanan Street
Date: 1989
Artist: Jonathan Monk

Jonathan Monk - "Cancelled" screen printed sign that cancelled all signs in the city centre on one weekend in Glasgow.

Map location 22

A GREAT BREAK

Location: Buchanan Street
Date: 1989
Artist: Alexander Woodall

A student of the painting department at Glasgow School of Art, Alexander Woodall was inspired to create a work in the city centre on one weekend in Glasgow.

Map location 22

ARTWORKS

GLASGOW
Metaphor City Edition

Manufactured in Scotland for world distribution.

Map location 22

INDEX

- 1 - STREET
- 2 - WEY BURNAL
- 3 - LETTER-TWOCKER
- 4 - WE LOVE REAL LIFE SCOTLAND
- 5 - ERECTION PIECE
- 6 - THE BATTLE OF GEORGE SQUARE
- 7 - WHITE BIKES
- 8 - OTHER PLACES
- 9 - ROCKS SOLD
- 10 - NELSON MANDELA PLACE
- 11 - DUSTY BY BURNAL LIGHT
- 12 - QUEST
- 13 - CLASSIC
- 14 - UNTTLED
- 15 - SPACE INVADER
- 16 - YOU TALKIN' TO ME?
- 17 - POLE BENDER
- 18 - HORSE CARRIES ITS OWN PLINTH
- 19 - GLASGOW CANDELABRA
- 20 - CAPITAL OF CULTURE
- 21 - A GREAT BREAK

Map location 22

Read about these

ARTWORKS

GLASGOW
Metaphor City Edition

and see them on your Rétroviseur

Psychic Derivé leaflet

PET BURIAL



Location: Brunswick Street
Date: 1998
Artist: Laura Rees

Small pets, mouse, bird, etc. each encased in small concrete blocks and buried in the foundations of new office blocks in Glasgow.

This work features in a Channel 4 film, 'Art School', by Pirate Productions directed by Annie Griffin, now on you tube: <http://www.youtube.com/watch?v=-Fsl0Su3Wc&feature=related>

Map: location 2

LETTER-TWOCKER



Location: Hutcheson Street
Date: 1994
Artist: James Thornhill

James Thornhill, LETTER-TWOCKER 1994, [Various sites, 5 consonants/4 vowels], materials and dimensions variable, 101-103 Hutcheson Street, Glasgow.

Thornhill mooched round town pinching letters from signs and then re-installing his own words Taken Without The Owners Consent.

Unbounded in the city- Having or appearing to have no limits: "the possibilities are unbounded".

Map: location 3

THE FESTIVAL OF BORROWED LIGHTS



Location: Hutcheson Street
Date: 1996
Artist: Steven Skrynka & Peter McCaughey

'The Festival Of Borrowed Light' 1996.
Location: 36 Sites across Glasgow city centre.

36 sites across the city were activated by light, kinetics, projected images, sounds and related events. Borrowed light is the Victorian term for glass paving slabs arranged in rectangular grids that are found throughout the city. Equipment installed in the cellars and underground spaces was triggered by switching systems, passers by, traffic lights etc. The project ran for 3 weeks.

Unannounced, enigmatic, playful, the work creating much discussion, media coverage and public interaction - think Moon Walk. Four trail maps were made to direct viewers to different sequences of the work in the city.

Map: location 4

WE LOVE REAL LIFE SCOTLAND



Location: John Street
Date: 25th - 27th November 2005
Artist: Ross Sinclair

'We Love Real Life Scotland', was a neon light installation commissioned for Glasgow's Radiance Festival of Light in 2005.

This work was located on the façade of the City Chambers local government building and sought to question the presumptions of national, local, international and personal identity. The work raised controversy when the council moved to edit out the "We Love Alcohol" neon.

Map: location 5

ERECTION PIECE



Location: George Square
Date: 2001
Artist: Jim Colquhoun

A very private effort to levitate in honour of Glasgow City Chambers.

Map: location 6

THE BATTLE OF GEORGE SQUARE



Location: George Square
Date: 31st January 1919
Artist: Glasgow Workers

The Battle of George Square, (also known as Bloody Friday and Black Friday), one of the worst riots in the history of Glasgow, took place on Friday 31st January 1919.

The dispute revolved around the Clyde Workers Committee demand for a 40 hour week, backed by widespread strike action. An estimated 60,000 strikers had marched to George Square, where rows of policemen faced them, guarding the City Chambers. Clashes broke out and the fierce rioting between the police and strikers led to the British Government deploying 10,000 English soldiers to prevent any further gatherings. This reaction was due to their fear of a social revolution, after the Scottish Secretary, described the riot as a 'Bolshevist uprising', referencing the 1917 Russian Revolution.

Map: location 7

WHITE BIKES



Location: George Square
Date: 15th April 2010
Artist: Glasgow Cyclists

The original White Bike Plan was an anarchic free transport programme of the Provos, the 1960's Dutch counter culture movement. They released 50, free to use, white bikes, across the city of Amsterdam, as a statement against the rise of consumerism, pollution and congestion caused by the privately owned vehicle. NVA staged a re-enactment of the White Bike Plan as part of this years GI, releasing 50 white bikes for use during the Festival, and launched it in George Square with a proclamation of the original manifesto.

Map: location 8

OTHER PLACES



Location: Buchanan Street
Date: 2000
Artist: Gemma Mudu

GEMMA MUDU - Statements by serving prisoners. Electronic billboard.

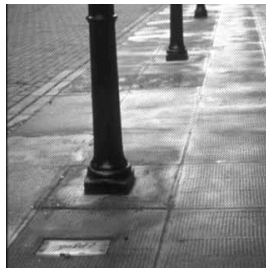
Source: David Harding's slide archive of Environmental Art 1988 - 2001

This work caused considerable controversy when Gemma conducted 'market research' into the project on Buchanan Street, as it ran behind her live on-screen. Many were outraged that criminals were being given a place to voice their thoughts about where they would rather be, (than Prison) and their wishes about what they would like to be doing.

Many wished for simple things - basic home comforts, the smells of home-baking, cut- grass etc.

Map: location 9

FOOL'S GOLD



Location: various sites Buchanan Street
Date: 1990
Artist: Helen Maria Nugent

Drain covers were replaced with cold-cast gold slabs with text attacking the 'false promises' of 1990 - Glasgow as European City of Culture.

Many Artists resisted the hyperbole of the City of Culture tag concerned that the accolade was superficial - all brand and no legacy.

Map: location 10

NELSON MANDELA PLACE

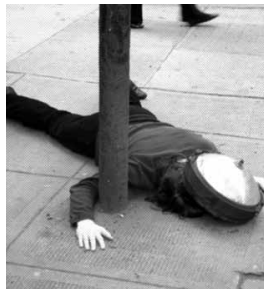


Location: NELSON MANDELA PLACE
Date: 1986
Artist: Glasgow City Council

Above Nelson Mandela's lawyer, Ishmail Ayob, Scottish anti-apartheid chairman Brian Filling, lead singer of Simple Minds Jim Kerr & councillor Danny Crawford, at the launch of the Freedom at 70 campaign in Nelson Mandela Place, which was originally St George's Place. Glasgow City Council signalled its support for the campaign to free Mandela by renaming the street in honour of the political prisoner, much to the annoyance of staff in the South African consulate there. Glasgow band Simple Minds helped organise and performed at two Nelson Mandela tribute concerts '88 & '90, the second of which was attended by the newly released Mandela himself.

Map: location 11

DEATH BY TRAFFIC LIGHT



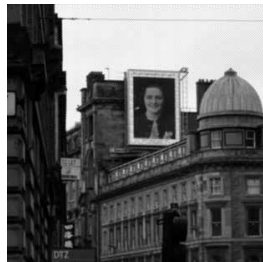
Location: Renfield Street / St Vincent Place
Date: 2010
Artist: Peter McCaughey

(Any resemblance to the Tin Man is purely coincidental)

See a fallen reflector from a traffic light. Play with a fallen reflector from a traffic light. Ask poor passer-by to photograph the result.

Map: location 12

QUEST



Location: Union Street
Date: 2009
Artist: Alicia Matthews

Alicia negotiated time on the giant advertising screen on Union Street, to help with her ongoing obsession with a woman in a 1940's wedding photograph she'd found in a junk shop. She asked people if they recognised the bride in the sepia photograph, flashed up on the screen at regular intervals during the week, to get in touch with her. She also co-ordinated a campaign in the Metro. The combined effort resulted in her contacting the living relatives of the woman who she spent time with learning the details of her life.

Map: location 13

CLASSIC

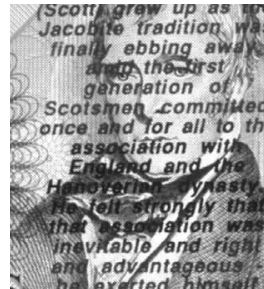


Location: Renfield Street
Date: 1989/90
Artist: Peter McCaughey

The Classic cinema in Renfield Street was originally Cranston's Cinema Delux built by James Miller for Kate Cranston in 1916. Cranston imagined it as a place where women could be seen to go out on their own. In 1981, just prior to being condemned to dereliction by a fire, it had been mainly screening porn movies. For an eight year period the building was abandoned to the elements. That's how McCaughey found it upon gaining access to the building in 1988. For two years he worked with the building. In year one he gathered fragments of film footage from the seven floors throughout the cinema. These fragments, exposed to severe damage, fire, rain and corrosion, were spliced together and the film transferred to 16mm and projected in the wreck of Screen 5 at the top of the derelict building. In year two, as the building was stripped out and redeveloped, he made an installation, Blue Lagoon, through the 7 floors of the building. In both cases, audience sneaked into the building included ex-employees of the cinema, (manager, projectionists, etc).

Map: location 14

UNTITLED



Location: Everywhere money goes
Date: 1989
Artist: Fergus Callen

Multiple pound notes marked off in sections equivalent in proportion to what the government spends on, e.g. the military and health. The image shows critical quotes placed on images on bank notes, eg. Walter Scott, David Livingstone, etc. returned to circulation. Made in keeping with but without knowledge of Cildo Meireles: Insertions into ideological Circuit.

Map: location 15

Psychic Derivé leaflet, detail

'Mapping the Future:
Public Art in Scotland'

Dundee
October 2010

'Mapping the Future: Public Art in Scotland' – Dundee – October 2010

Speaker at an event co-developed by Duncan of Jordanstone College of Art and Public Art Scotland, comprising 3 symposia, exploring the future of public art in Scotland in which PMc described the method and outcomes of the Psychic Dérive as a teaching tool.

'Polebender'

T103

Glasgow

July 2011

'Polebender' – Trongate 103 - July 2011

Exhibition at Trongate 103, with associated events, including the Inaugural Walk of The Peripatetic Sculptors Society, a Psychic Dérive and an Artist Talk.



Merchant City Psychic Dérive

Public · By Trongate 103



Going (1)



Linda McLaughlin

[Export](#) · [Report](#)

Sunday, July 24, 2011 7:00pm until 10:00pm

Meet at Trongate 103, , ,

Merchant City Psychic Dérive

Where: Out and about on the streets of Glasgow. Participants depart from the foyer of Trongate 103.

When: Sunday 24th July, from 7 p.m.

How: The Psychic Dérive is free but places are limited. If you would like to attend, please reserve a place before the 22nd July by emailing peter@w-a-v-e.org

Places will be allocated to the first 25 people.

Liam, Organiser DIY Festival 2009 on the first Psychic Dérive "Peter took us on an inspiring and revealing journey - a fantastically crafted uncovering of hidden moments and social spaces that I felt intimately connected with. This reawakening of ephemeral art installations and events offered up an alternative history of peoples direct engagement with the city centre and its public spaces compared to the usual picture presented to us as shoppers. Peter offers us invaluable techniques of uncovering ideas and information that seem hidden within or just beyond the scope of our day to day lives".

WALK SANS FRONTIÈRES

Huntly
March 2012

WALK SANS FRONTIÈRES - Huntly - March 2012

A presentation at Deveron Arts, Huntly, focussed on the *dérive* and on the newly established Peripatetic Sculptors Society, as a way of negotiating the city- as part of the debate on the right to mobility, access and visa restrictions.

<http://www.deveron-arts.com/events/event-happening-soon/>



School of Culture and Creative Arts

Undergraduate degree
programmes

Postgraduate taught degrees

Research

Funding

International Links

Events

News

- News Archive 2010-11

- News Archive 2011-12

Current vacancies

Student life

About us

Our staff

Facilities

Walk Sans Frontières with Dee Heddon

Dee Heddon chaired a discussion event for Deveron Arts Centre, Huntly: WALK SANS FRONTIÈRES on Sunday March 18th.

WALK SANS FRONTIÈRES accompanied a weekend of activities held by Deveron Arts, exploring issues of walking, access, and boundaries, including a 'Slow Marathon' - a 26 mile walk.

Participants in the discussion included artists Mihret Kebede, Norma Hunter, Claire Qualman, Misha Myers and Peter McCaughey; University of Glasgow Reader in Geography, Hayden Lorimer; BBC radio broadcaster Helen Needham; Forestry Commission Scotland's Communities Recreation & Tourism Manager Calum Murray, and Dawn Tuckwood, Public Health Coordinator in Aberdeenshire.

More details <http://www.deveron-arts.com/wb/pages/artists/mihret-kebede/walk-sans-frontieres.php>

<< [News Archive 2011-12](#)



Psychic Derivé leaflet, detail

publication
Deveron Arts

Glasgow
March 2012

‘Those Who Go With Real Life Will Be The Winners in History’
Commissioned by Deveron Arts, Huntly to contribute an essay ‘Those Who Go With Real Life Will Be The Winners in History’ to Ross Sinclair’s book. Ross Sinclair : We love Real Life Scotland Art, History and Place, A Reader exploring the heritage of Huntly’s Gordons and other Scottish Incidences in the work of Ross Sinclair. Deveron Arts, Huntly, Scotland. ISBN 978-1-907115-09-7 Page 167-175 (see essay attached)

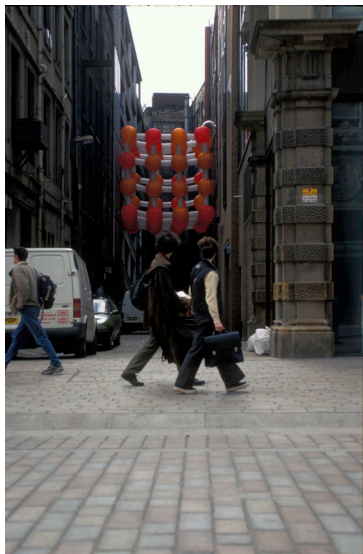
'Art in Public Realm'

Gi - Glasgow International Festival
of Contemporary Art

Glasgow
April 2012

'Art in Public Realm' - Glasgow International – April 2012

Commissioned by GI and Engage Scotland to take artists on a Dérive of public art throughout the city and also chairing the associated conference 'Art in Public Realm'.



Ian Kettles / Susan Hunter



Douglas Gordon



Jonathan Monk



Peter McCaughey

extinct works



people viewing extinct work
through Retrovisieurs

Psychic Dérive
GoMA

Glasgow
September 2012

Psychic Dérive GoMA - September 2012

Commissioned by the Gallery of Modern Art in Glasgow to deliver a Psychic Dérive Tour and a Peripatetic Sculptors Society walk, as part of the Social Media Week 2012, to engage the public with public art. The results of the Peripatetic Sculptors Society exhibited at GoMA.

“A Psychic Dérive, part performance, part ghost tour- a 3hr forensic foray into the traces of artist’s interventions and other bits of secret history from across the City”.

<https://www.facebook.com/events/508266259203165/>



#SMW12 Psychic Dérive Tour



#SMW12 Psychic Dérive Tour

Public · By GoMA – Glasgow Museums

Events

Join

Maybe



Going (20)



Douglas Laing



Harald Turek



Katie Bruce

Thursday, September 27, 2012

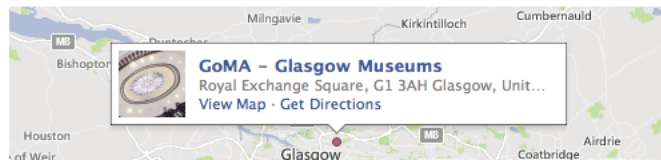
7:00pm until 10:00pm in UTC+01

"A Psychic Dérive, part performance, part ghost tour- a 3hr forensic foray into the traces of artist's interventions and other bits of secret history from across the City". Peter McCaughey, Artist

Thursday 27 September

7 - 10 pm

leaving from GoMA... [See More](#)



Hannah Logan

I was very inspired by Gemma Mudu's work and I'm proud to have and to share the "Other Places" slide and story. Thankyou again. Hannah J W Logan x



Psychic Dérivé detail

A graphic design featuring a grid of twelve colorful circles arranged in three rows and four columns. The circles are in various colors: green, red, teal, yellow, blue, brown, orange, black, pink, black, blue, and purple. The circles are set against a white background with a subtle grid pattern.

IOP Institute of Peripateticness

Glasgow Peripatetic Sculptors' Society at GoMA

Exhibition: 12th - 28th October 2012
Opening: Thursday 11th October 2012 • 6-8pm

West Walk
Merchant City Festival

Glasgow
July 2013

Routes & Culture - West Walk along the River Clyde, Glasgow - July 2013

A pilot for the Commonwealth Games commissioned by Glasgow 2014: a hybrid between (i) the Peripatetic Sculptors Society, whereby the participants travel a route, stopping to make work along the way- the route is then re-walked as a tour of completed work; and (ii) the Psychic Dérive – with participants invited to a time-travelling, forensic foray into the traces of transient artworks from the past, negotiating a way of remembering and re-activating the ‘experience’ of site-specific and moment-specific works and events that shouldn’t be forgotten.

HERITAGE WALKS

HERITAGE WALKS

CUAIRTEAN DUALCHAIS

ROUTES AND CULTURE



South Cycle: Sat 27 July 10am & 1pm

Begins: Commonwealth House

Ends: Merchant City

Artist-led journeys, exploring the routes that will be used by the public during the Commonwealth Games in 2014. The guided tours will consider the Commonwealth influence on Glasgow's fabric and communities, architectural legacy and what it means to be a city in the process of regeneration. Reflect on Glasgow's changing landscape and imagine the transformation in one year's time as visitors from across the Commonwealth and beyond arrive to explore the dear green place.

† 0141 353 8000

£FREE! (Places are limited)

Cycles not included