



**United Nations Economic Commission for Europe**

Committee on Urban Development, Housing and Land Management | **85<sup>th</sup> session**, Geneva, 2–4 October 2024

**Activities of the Geneva UN Charter Centres of Excellence | 03 October 2024**



*Putting*  
**Place and Communities**  
*at the heart of the*  
**Regional Action Plan 2030**

**Glasgow Urban Lab**

Geneva UN Charter Centre of Excellence, Glasgow, UK

**GLASGOW  
URBAN LAB  
THE GLASGOW  
SCHOOL OF ARCHITECTURE**

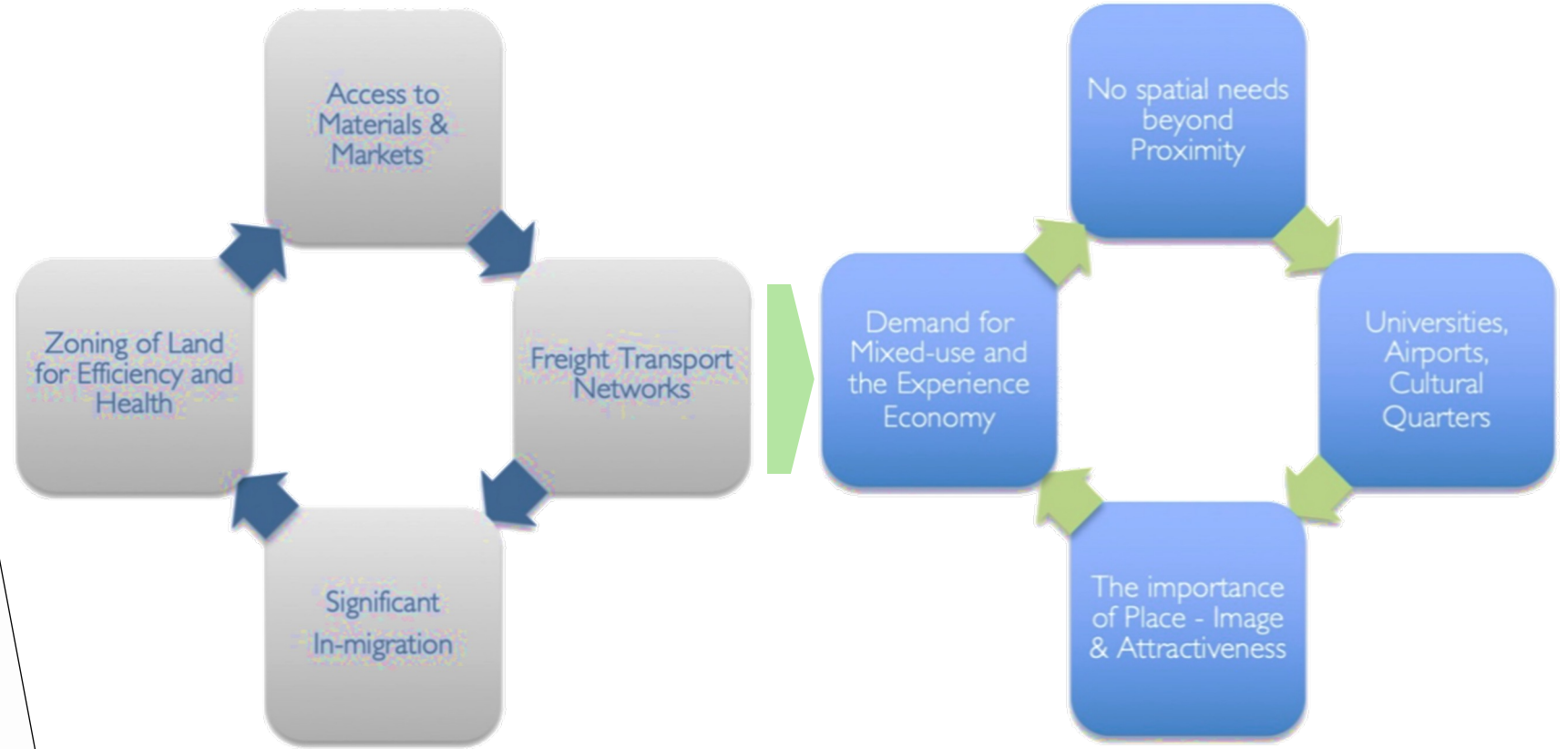
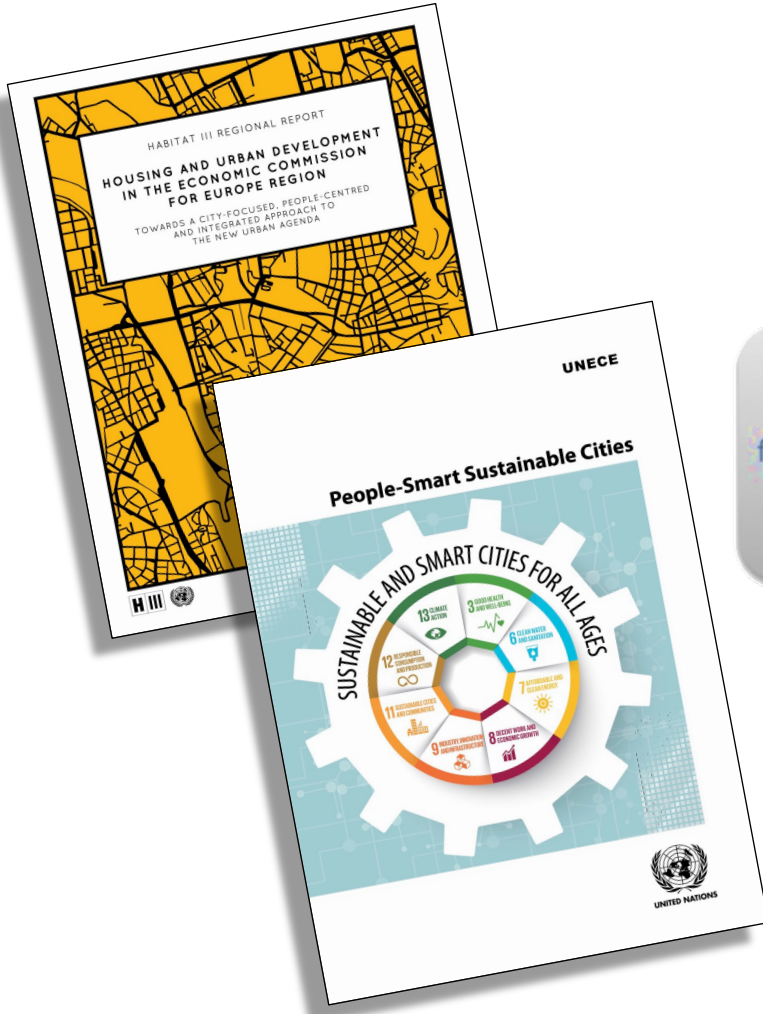
Geneva UN Charter  
Centre of Excellence  
SMART SUSTAINABLE CITIES



**UNECE**

Habitat III Regional Report on  
UNECE Cities...

... identified a shift from  
The **Industrial** City to The **Knowledge** City...



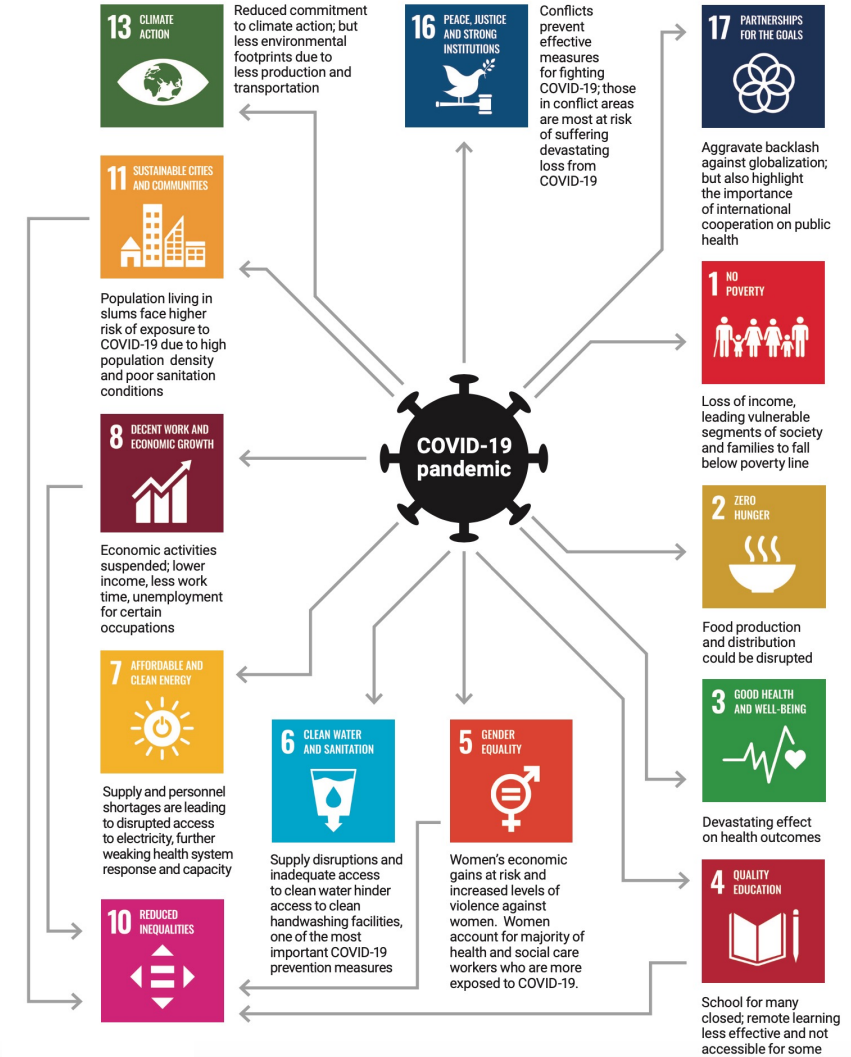
... UNECE published  
**People-Smart Sustainable Cities**

Source: UN-Habitat



The SDG/Ts are designed to be **“people-focused, integrated and indivisible”** to create a positive synergetic system for Sustainable Development (Agenda 2030 Declaration)

Source: UNDESA



... this can be distorted by global forces – COVID-19

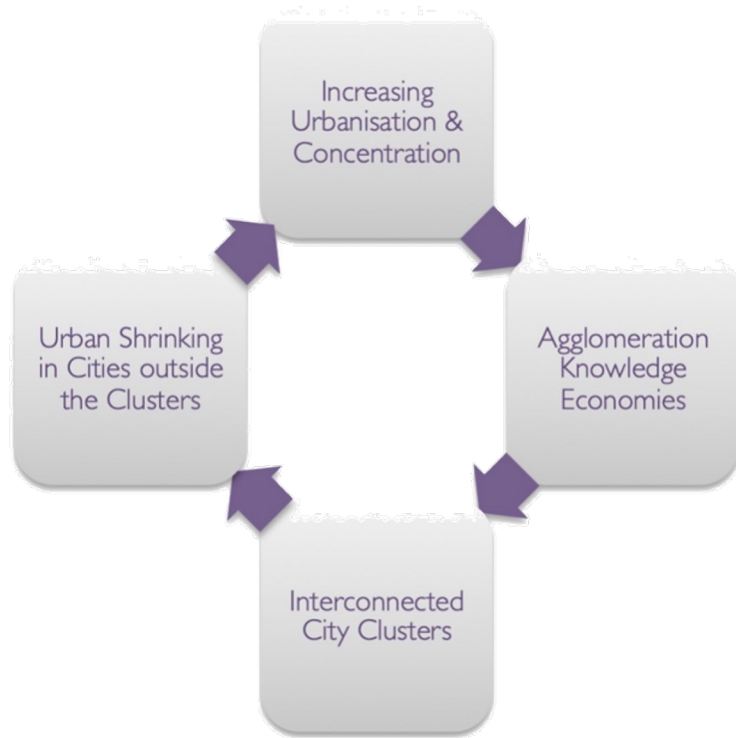


The COVID-19 pandemic is an example of global forces that influence the balance and dynamics of climate, demographic, and technological change

Agenda 2030 & SDG/Ts need systems responses at international, national and local scales.

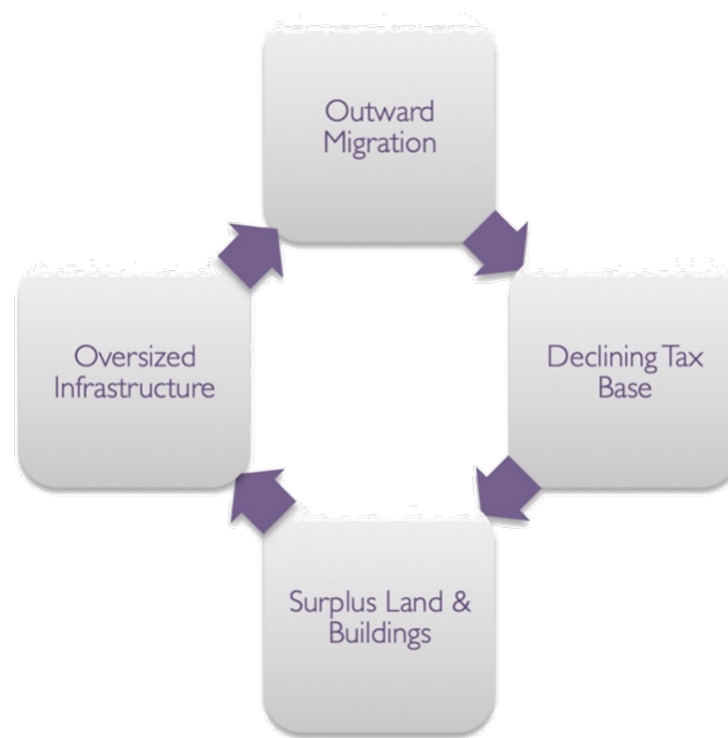


Not all cities can make the shift to **people-smart** and **sustainable** without support ...



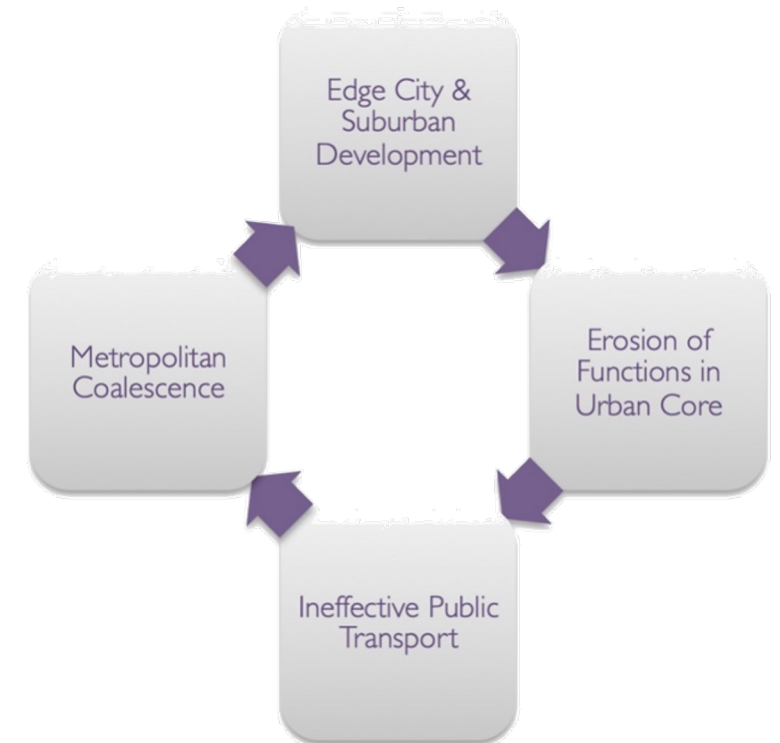
### Urban Concentration

The winners in the trend towards urbanisation have been the cities able to maximise the opportunities offered by the knowledge economy and the digital revolution through higher education and proximity to similar cities. Short-range transportation has reinforced the links between, and the critical mass of, these city clusters, to the detriment of more isolated cities.



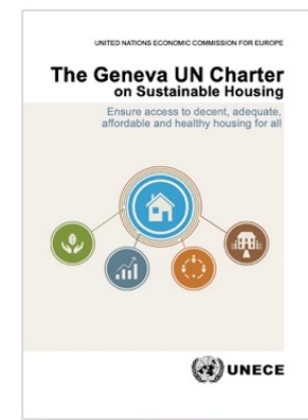
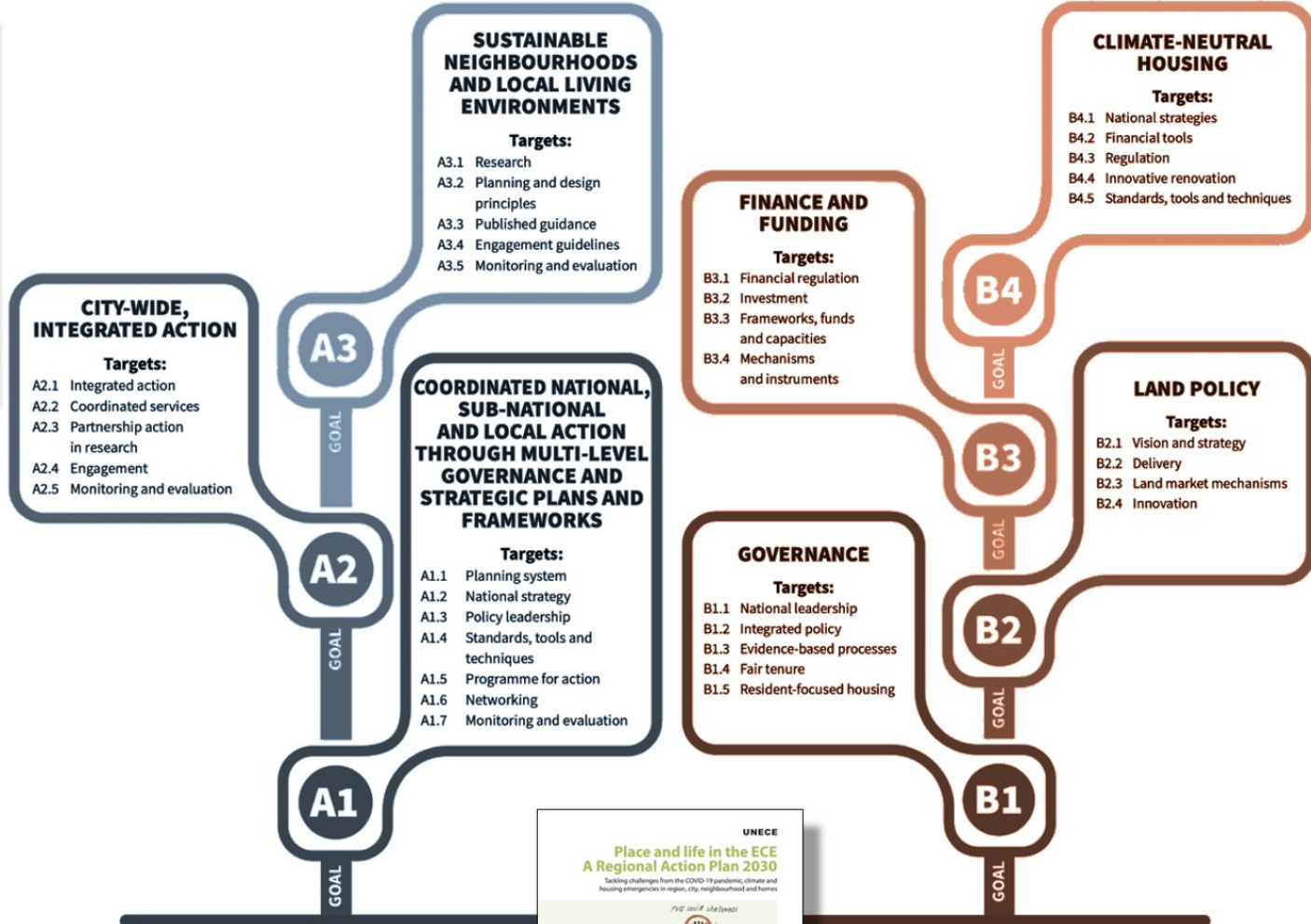
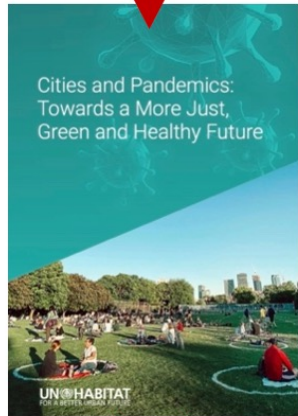
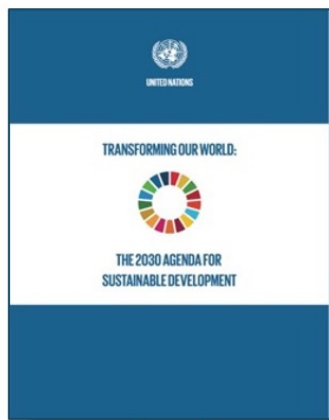
### Urban Shrinking

Outmigration from cities leads to a reduction in the city's tax base and imbalance in the demographic structure (ageing and low fertility). This, in turn, causes vacancies in land and buildings, and a legacy infrastructure beyond the city's ability to sustain it.



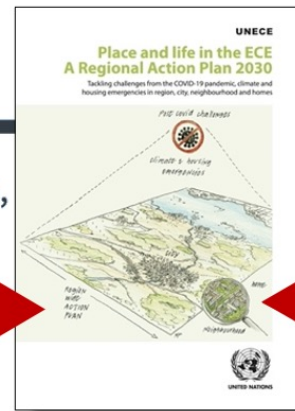
### Urban Sprawling

Demand for new forms of development at the edge of the city competes with functions at the urban core. This, in turn, results in a dysfunctional transport system dependent on the car and, when cities are located close to one another, causes merging of the urban areas.



**POLICY AREA A: CITIES, NEIGHBOURHOODS, HOMES AND RURAL LIFE**

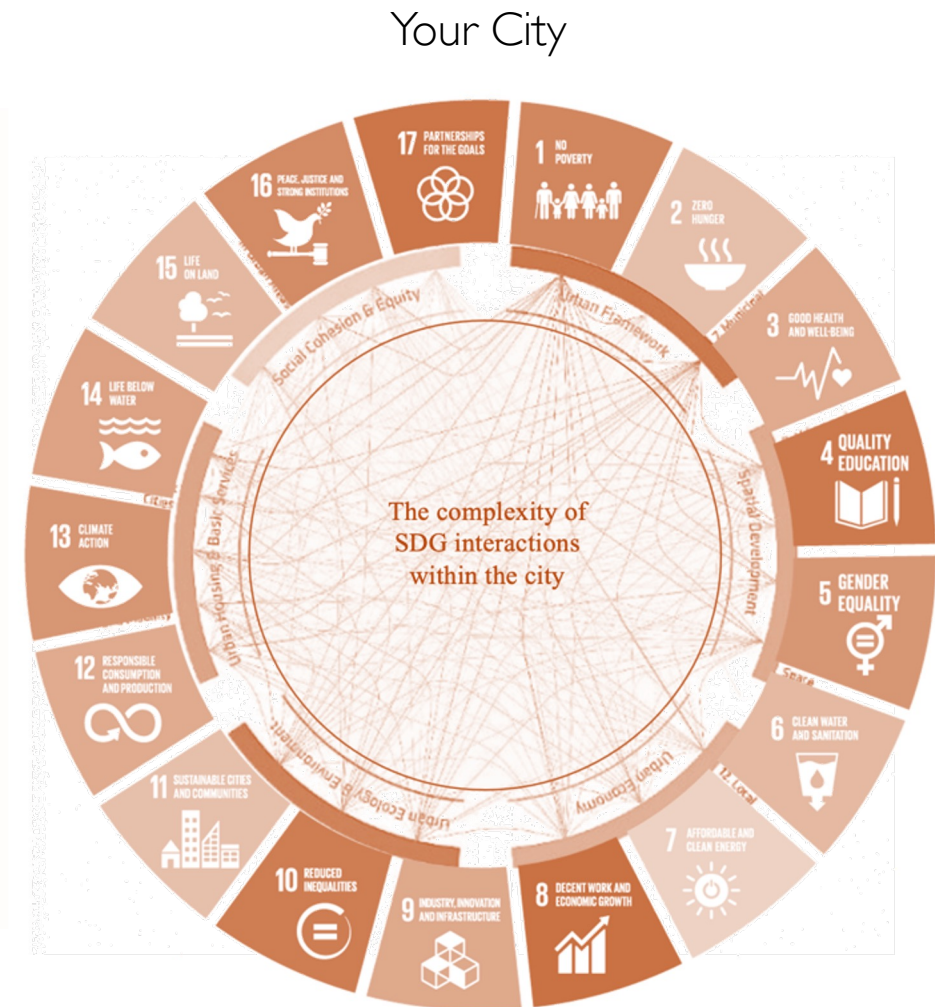
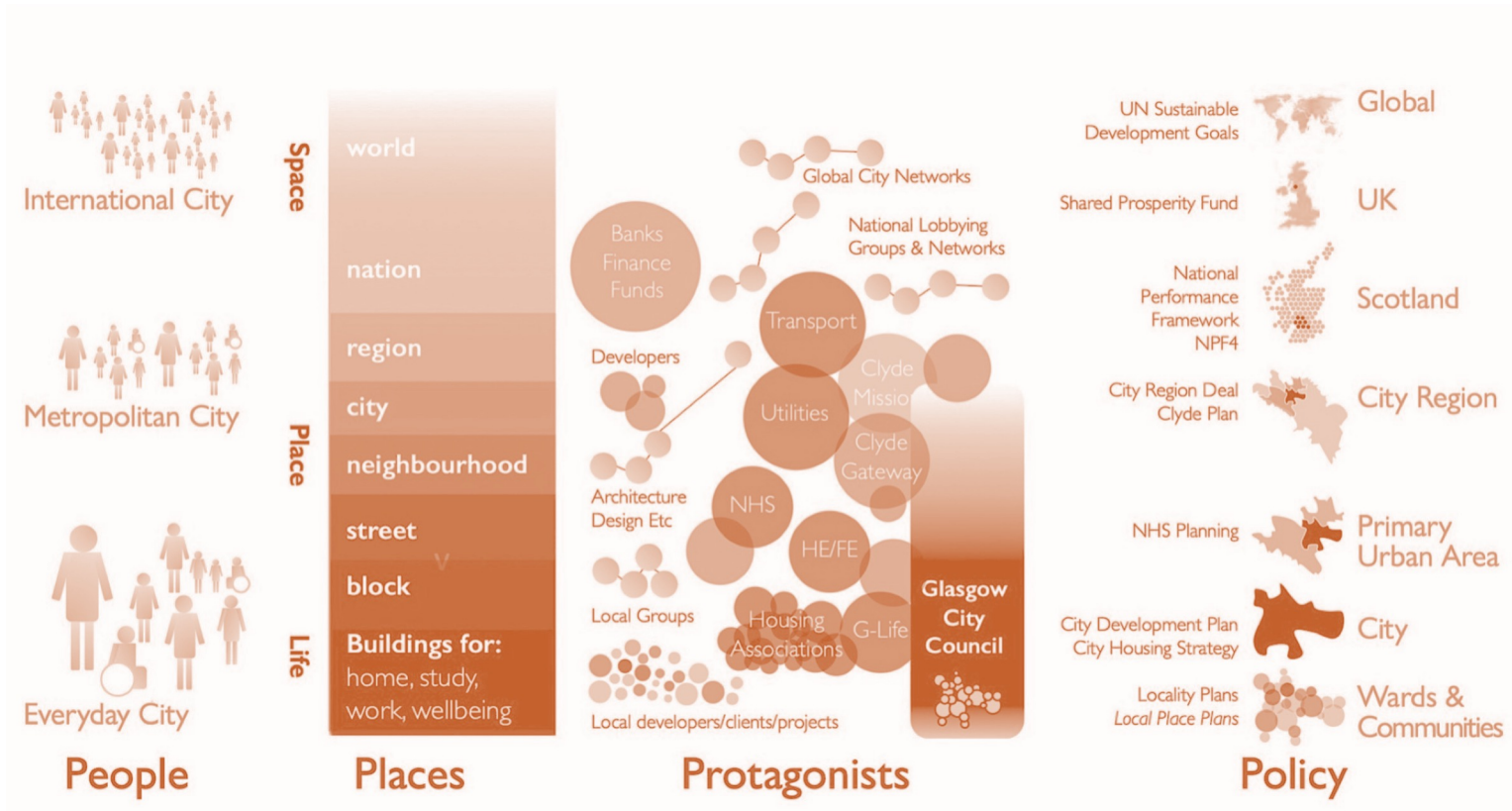
**POLICY AREA B: SUSTAINABLE HOUSING AND HOMES**



... to make the positive, just transition envisaged by the policies, goals and actions of the Regional Action Plan 2030 ...



# The Ecosystem of Place



... harnessing bottom-up engagement with all the actors in the **Ecosystem of Place**

Your Neighbourhood

Making sense of complex systems ...  
... in Your City

*“Cities are where the Climate Battle will largely be won or lost”*

*UN Secretary-General*

*“We believe the best way to tackle climate change is through reducing energy use and waste and using local spaces to grow food that bring immediate practical benefits to local people.”*

*SouthSeeds, Social Entrepreneur  
Community Climate Activist, Glasgow*

Can the Network of Centres contribute to the development of methods & tools for cities to bring  
**Place and Communities**  
into the heart of delivery of the  
**Regional Action Plan 2030**



... and in Your Neighbourhood