

“For a society to flourish,
there must be a flourishing
city at its core.”

Jane Jacobs quoted by Judith Rodin
President of THE ROCKEFELLER FOUNDATION
from the introduction to *Century of the City: No Time to Lose*



VANCOUVER

VLADIVOSTOK



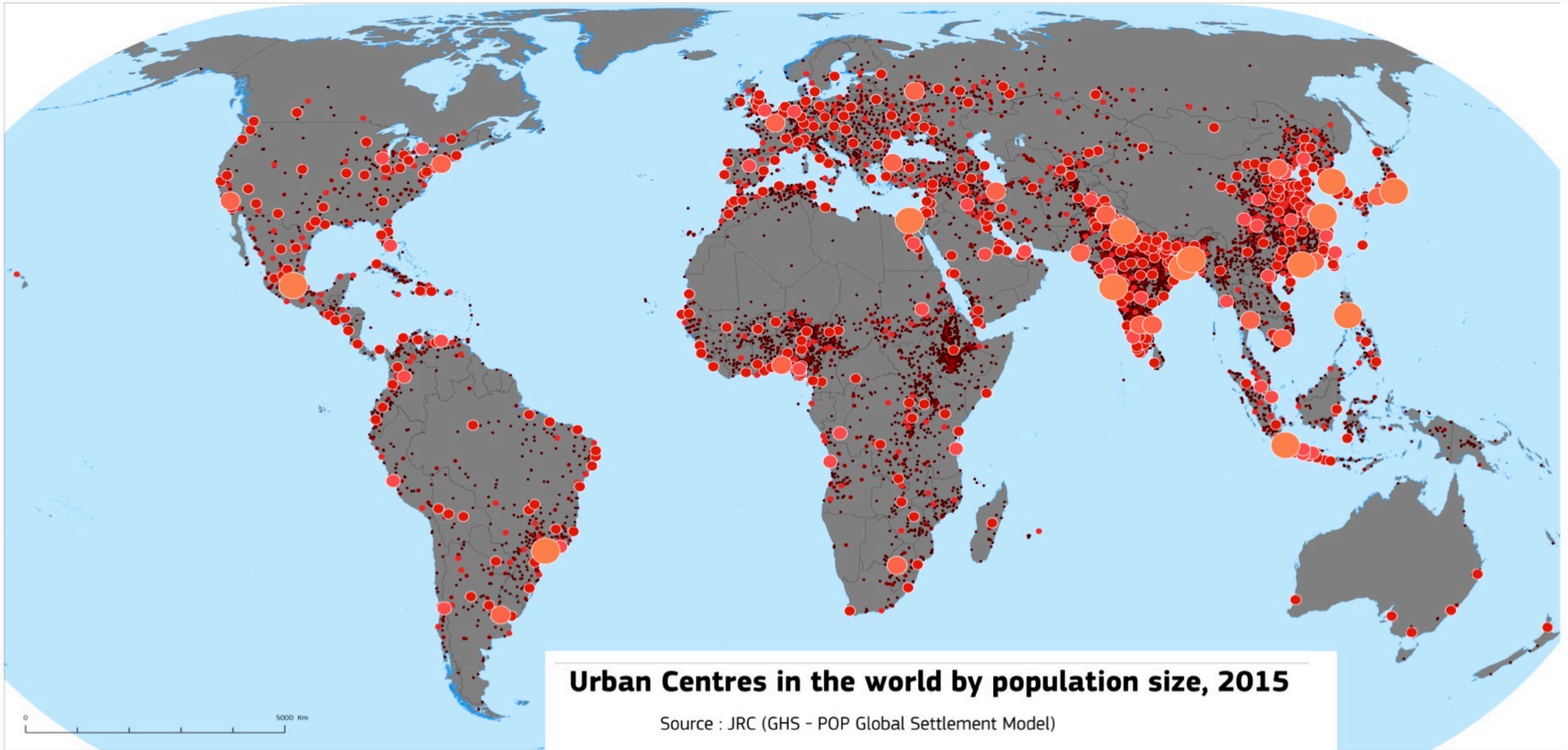
North America

EU/EFTA

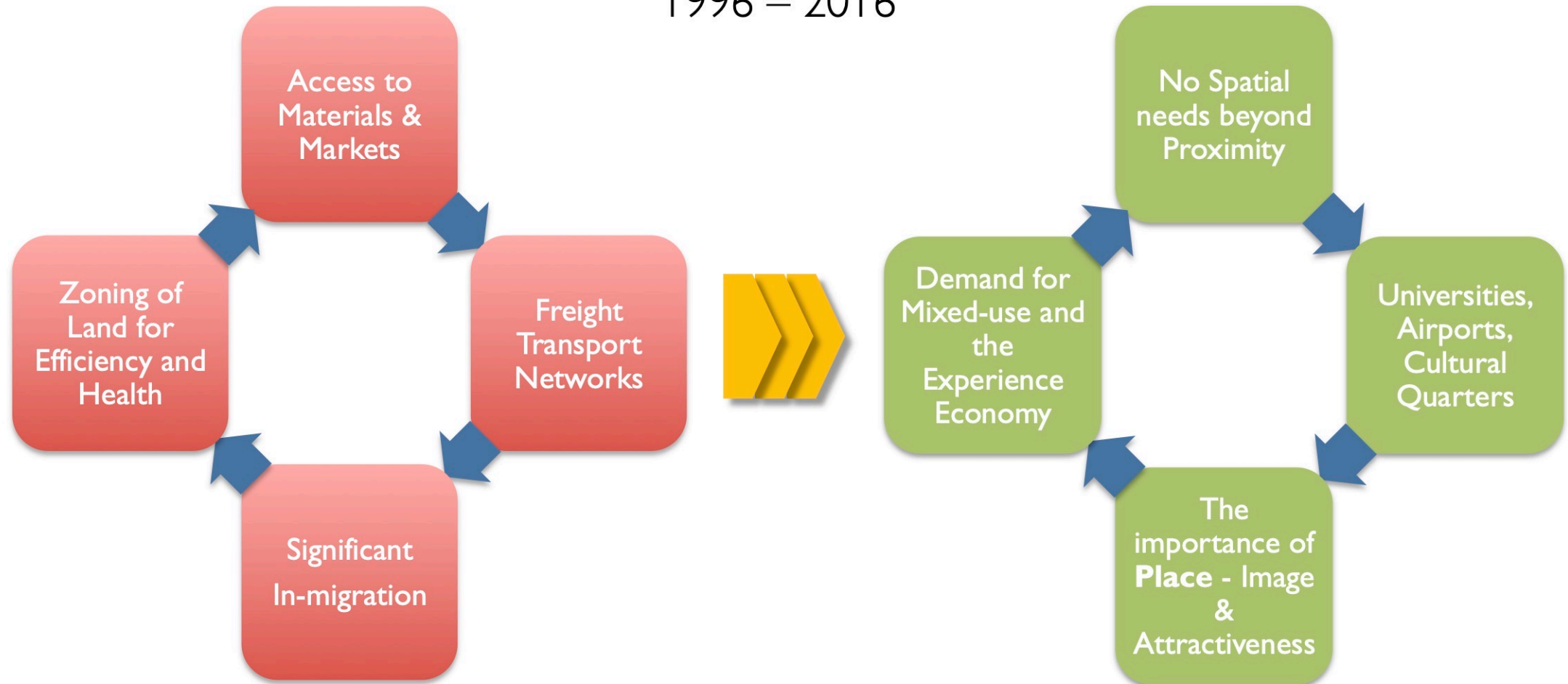
Eastern Europe Russia
Caucasus & Central Asia

South East Europe

The Territories of the United Nations Economic Commission for Europe (UNECE)



TRANSITION from THE INDUSTRIAL CITY to THE KNOWLEDGE CITY 1996 – 2016



DEMOGRAPHICS

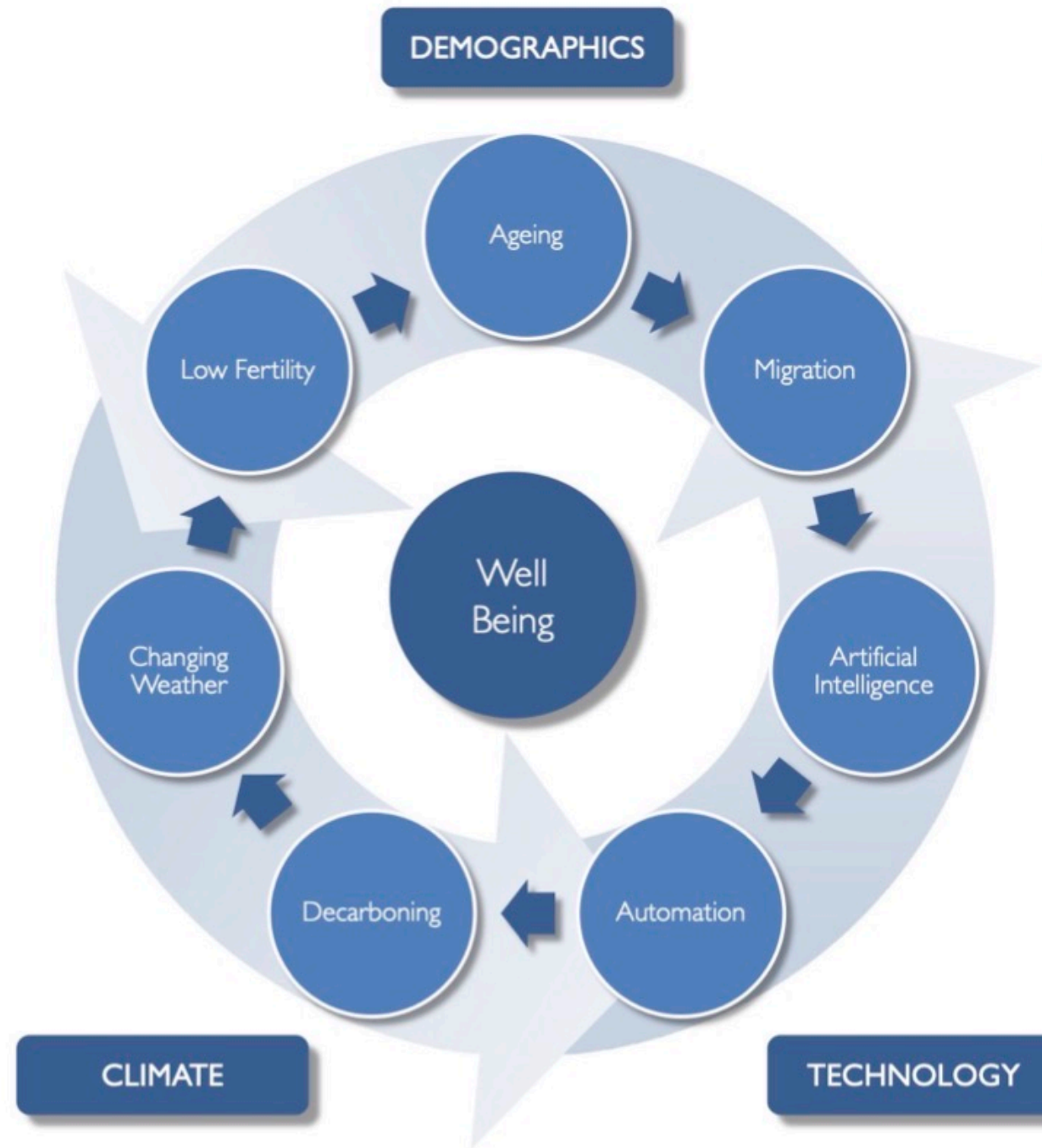
Ageing
Low Fertility
Migration

CLIMATE

Weather Water Fire
Decarbonisation

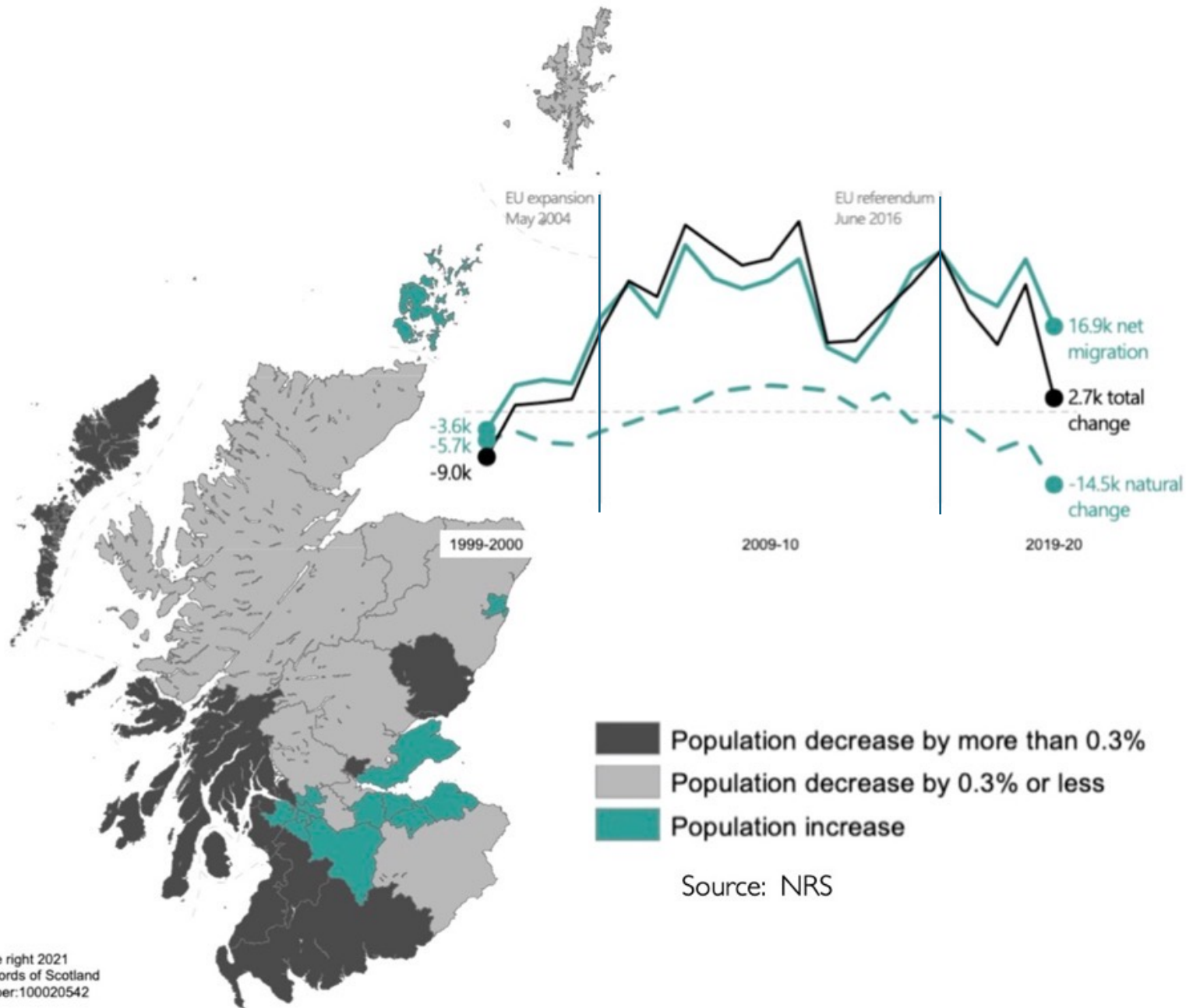
TECHNOLOGY

Automation
Artificial Intelligence



| COUNTRY | Pop M 1971 | Pop M 2020 | % change |
|-----------------|------------|------------|-----------|
| Scotland | 5.3 | 5.5 | 5% |
| Denmark | 4.9 | 5.8 | 17% |
| Finland | 4.6 | 5.5 | 20% |
| Netherlands | 13.2 | 17.4 | 32% |
| Norway | 3.9 | 5.4 | 38% |
| Ireland | 3.0 | 5.0 | 67% |
| NZ | 2.9 | 5.1 | 78% |

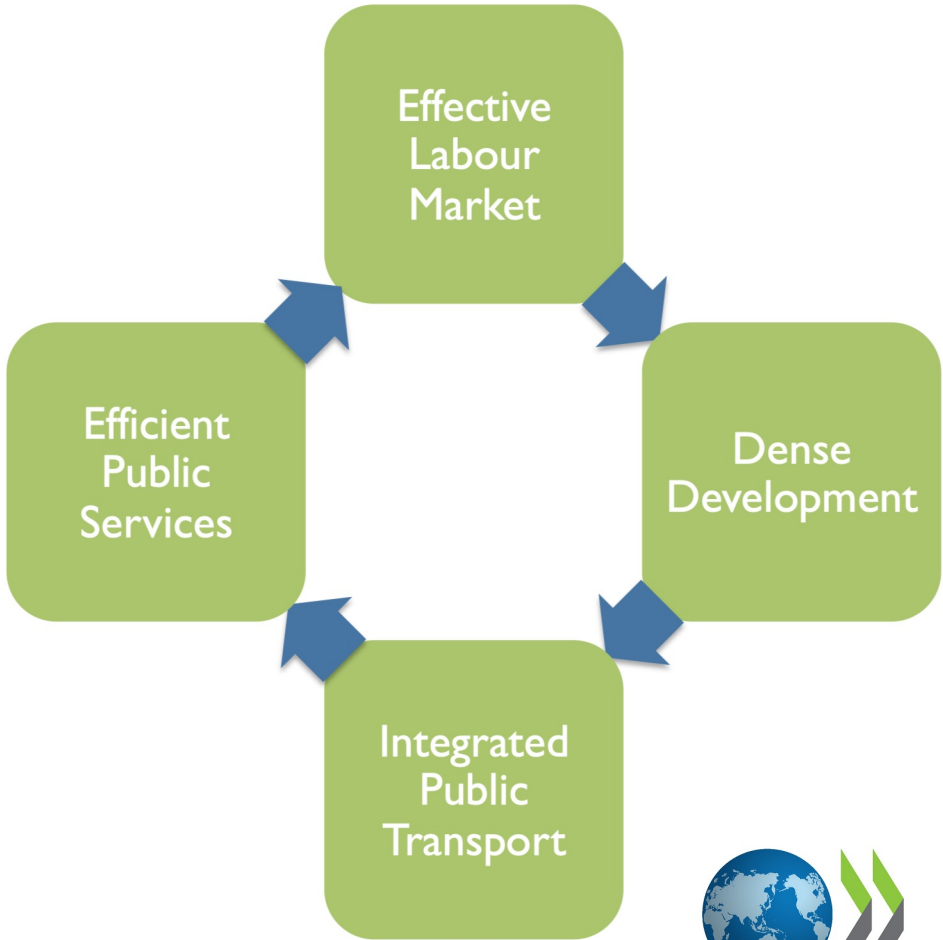
Source: World Bank, Irish government



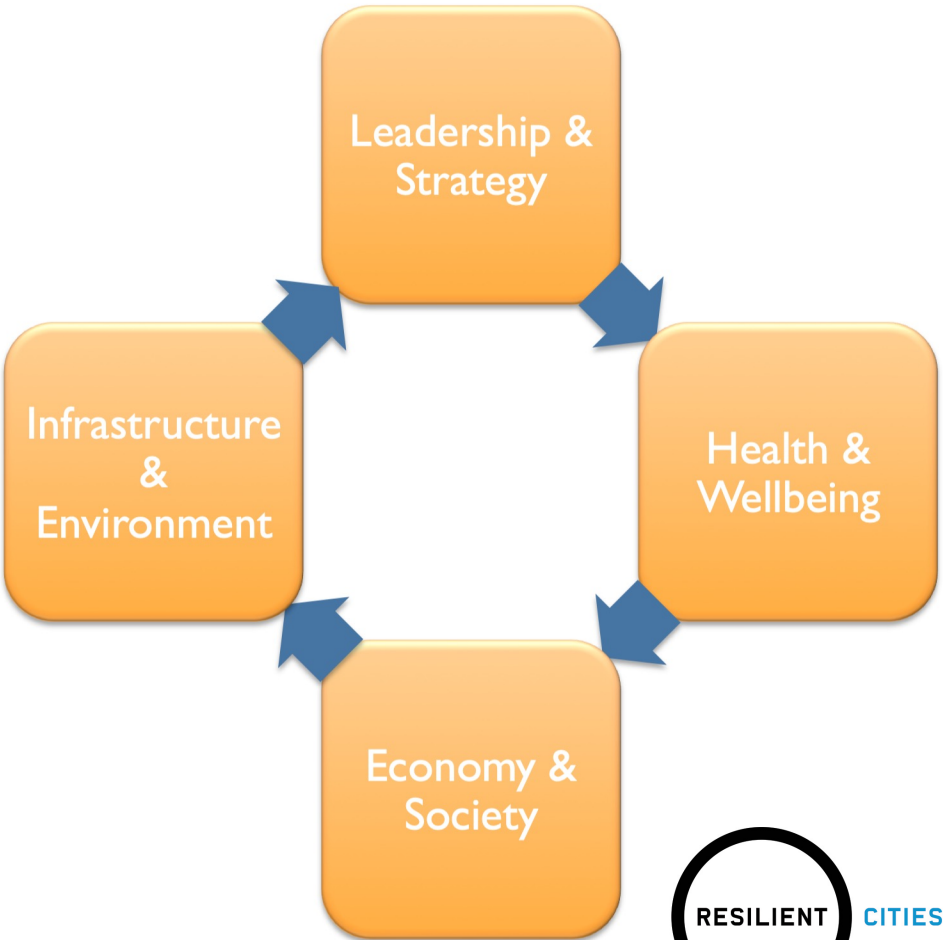
Source: NRS

POSITIVE URBAN CYCLES

THE COMPACT CITY



THE RESILIENT CITY



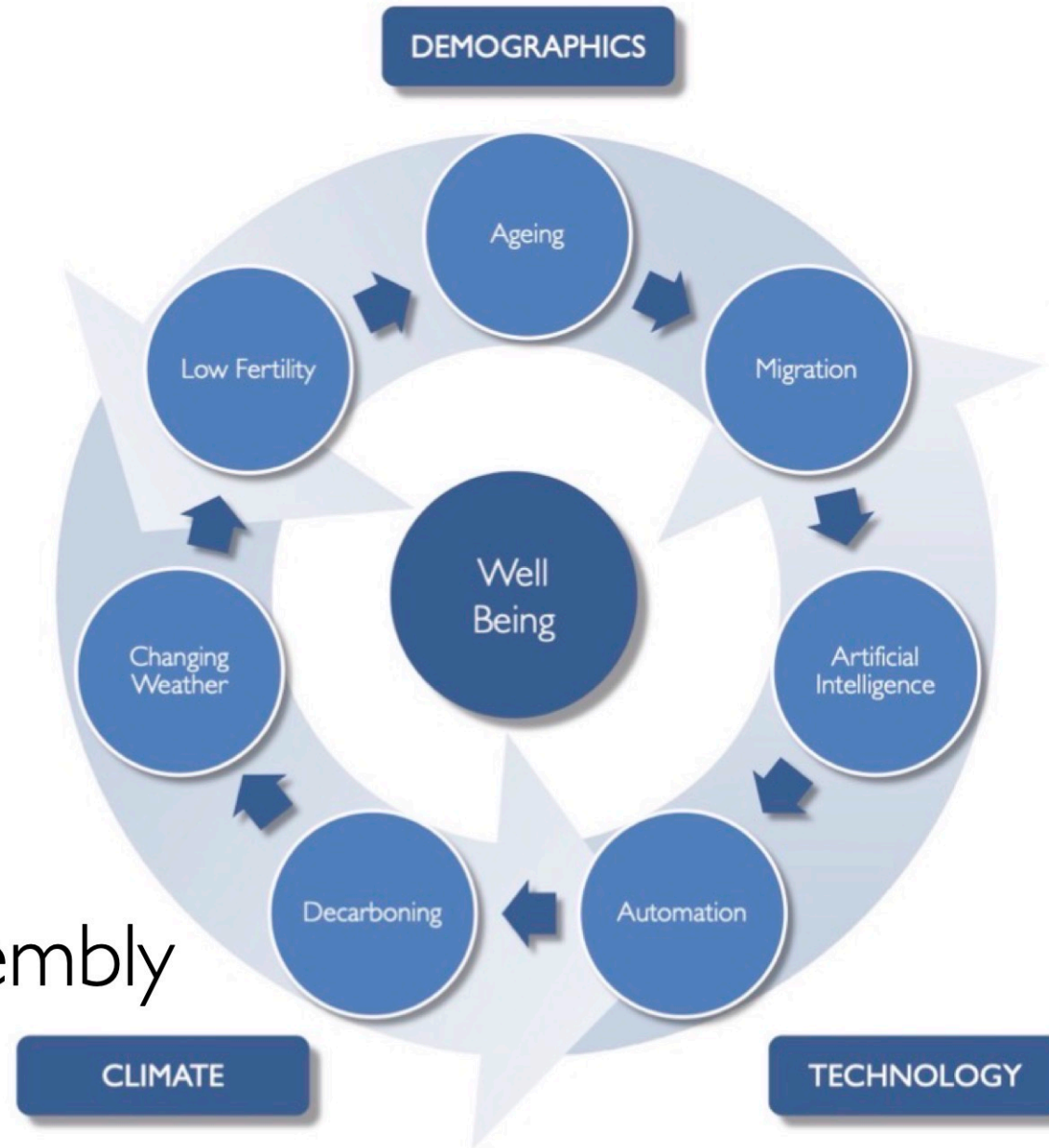
Smart? Sustainable? Green? Just?
Compact? Resilient? Equitable?

Are our cities a collection of parts?

PROMISCUOUS CITIES?

DEMOGRAPHIC CLIMATE & TECHNOLOGICAL CHANGE

A benign or toxic cycle?



Vision, leadership and pragmatic management are needed to respond to these global trends.

This is the 21st century challenge for government, business and education at national, regional and city level.

Cities for all: Systems Re-assembly

2022

Source: Glasgow Urban Lab

Agenda 2030 : Transforming our World – the Sustainable Development Goals



Article 2: comprehensive, far-reaching and **people-centred** universal and transformative goals and targets

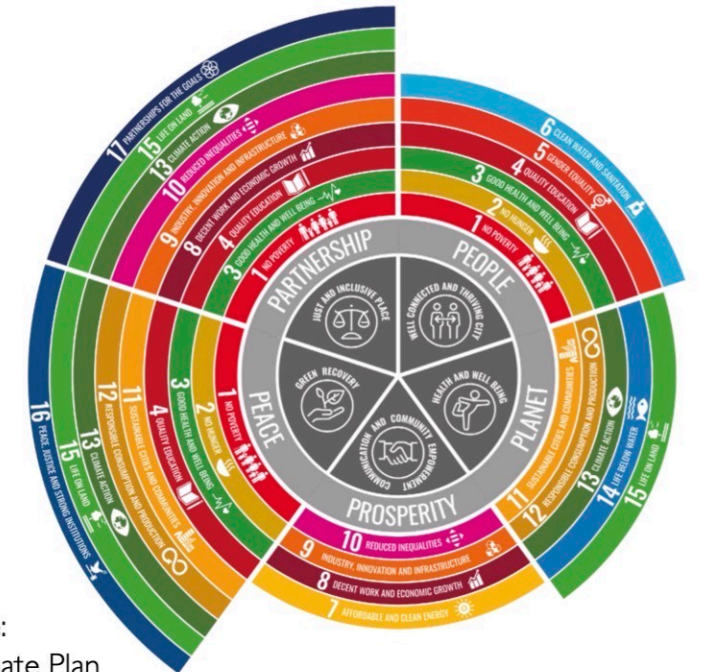
Article 5: integrated and indivisible to balance the three dimensions of sustainable development – economic, social and environmental



Source:
Outcomes-focused
Policy Making in Scotland
www.nationalperformance.gov.scot



Source:
Glasgow's Climate Plan
Response to the climate & ecological emergency
www.glasgow.gov.uk



Place Commission\Glasgow
City Urbanist\Glasgow

The SDGs enable **vertical** and **horizontal** integration



Vertical Integration of SDGs into National & Local Frameworks



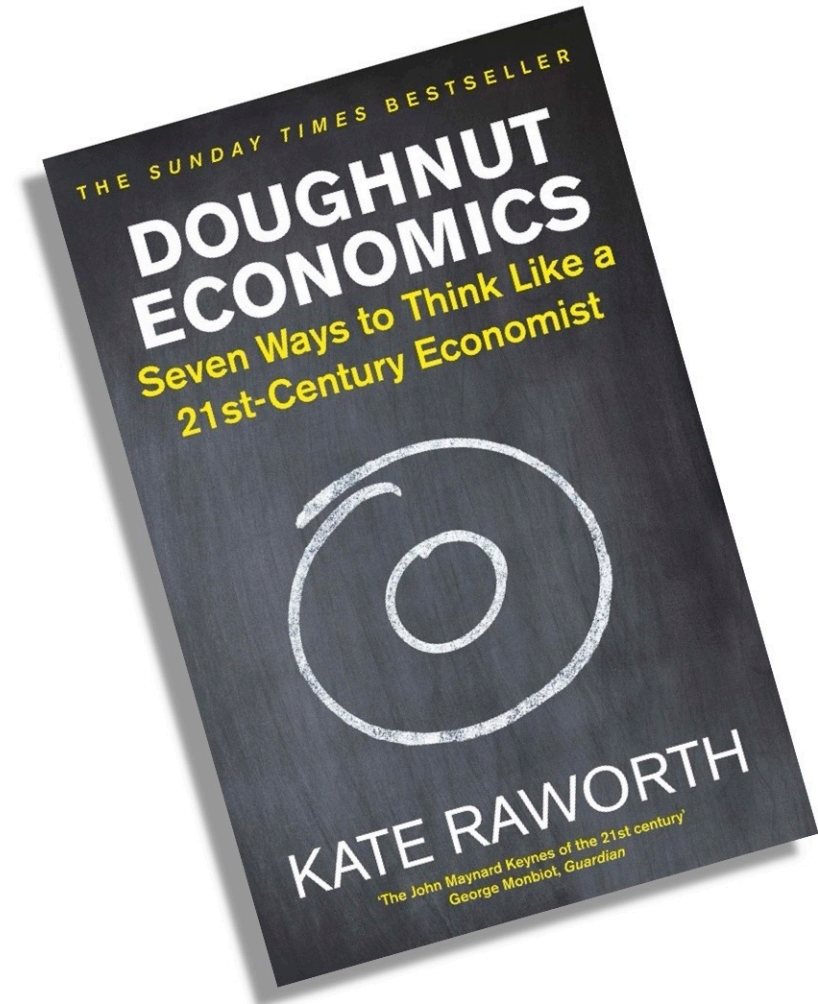
Global Goals (SDGs)



National Outcomes (NPF)



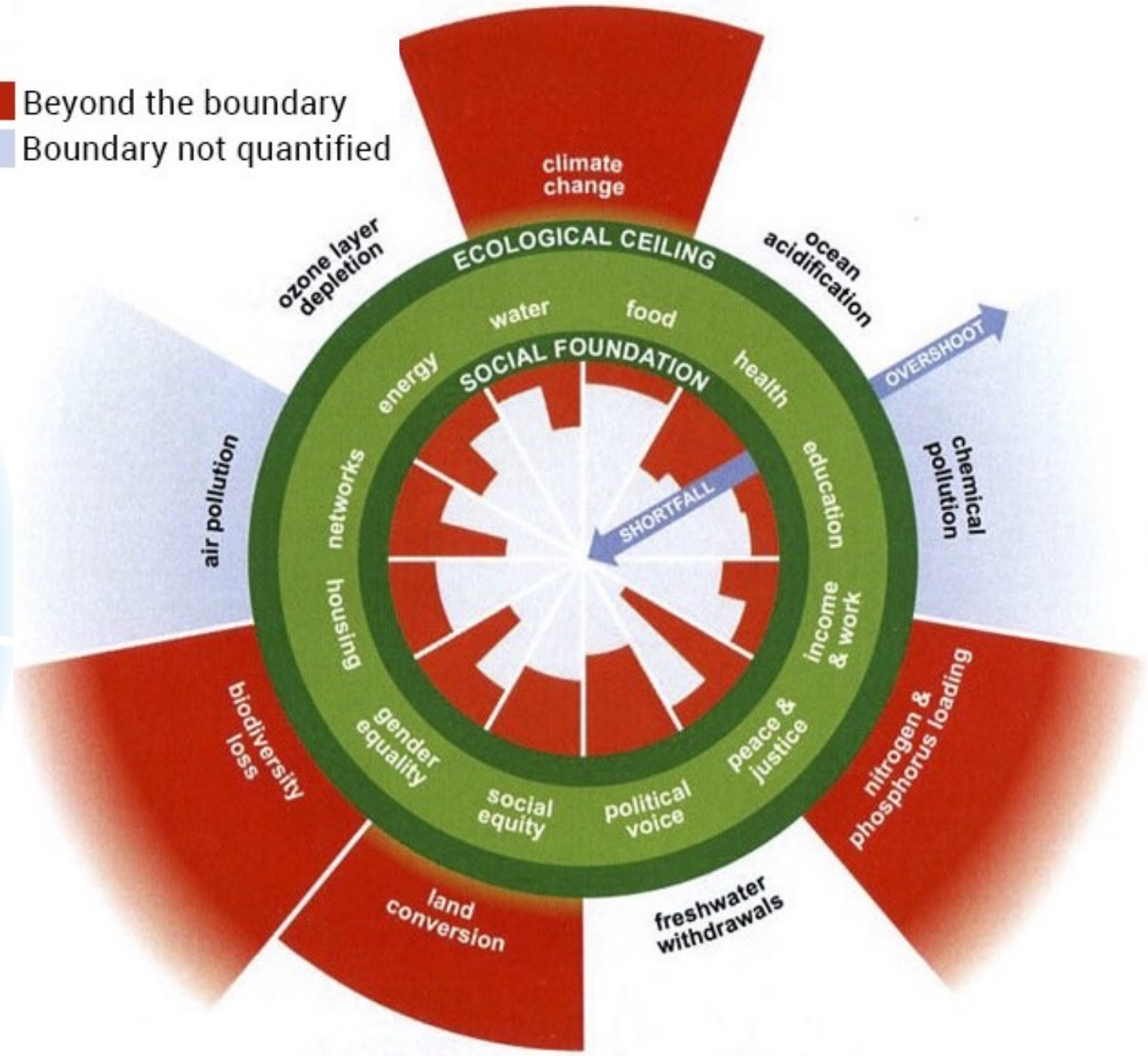
Cities for all: Systems Re-assembly



The Doughnut A 21st century compass.

“Between its social foundation of human well-being and ecological ceiling of planetary pressure lies the safe and just space for humanity.”

■ Beyond the boundary
■ Boundary not quantified



The Higgs paradox.

“If we are to build the city of the future,
we must first imagine it ...

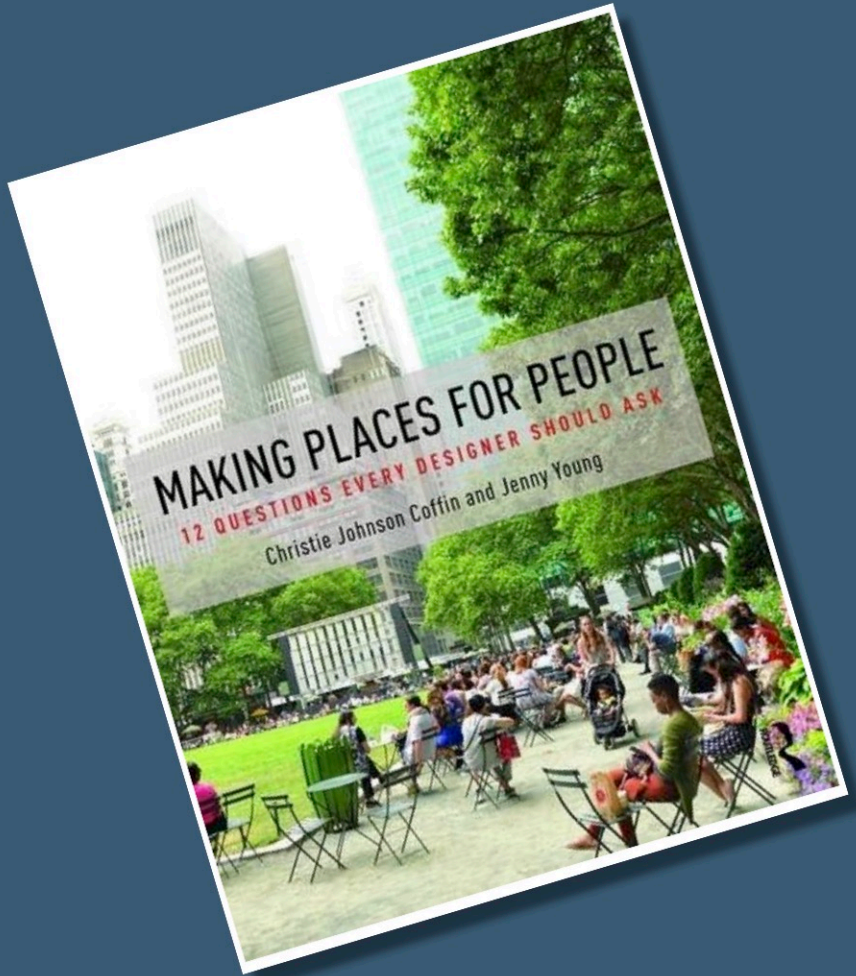
*... but what happens to our collective
consciousness and mental health if the only
futures we can imagine are apocalyptic and
dystopian”.*

We need hope...



All about **PEOPLE**

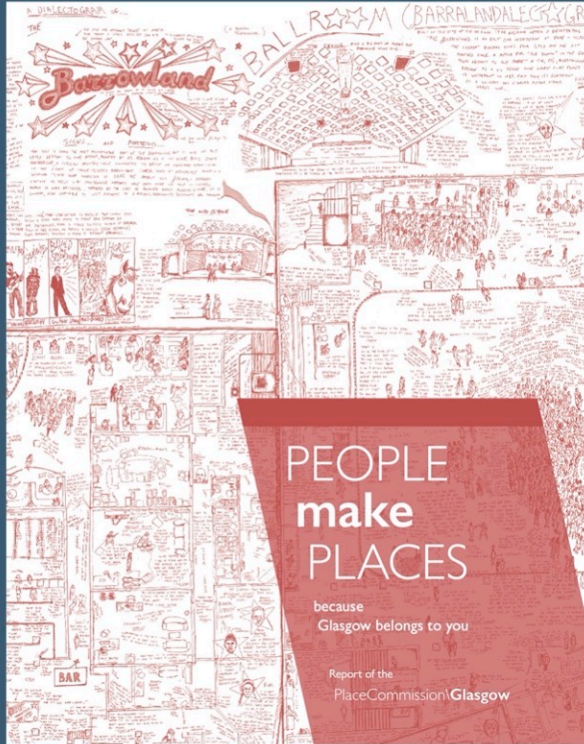
- What is the 'story' of this place?
- Whose place is it?**
- Where is it?
- How big is the place?**
- What 'logic' supports it?
- Does it balance community, privacy and economy?**
- What makes it useful?
- Does it support health?**
- What makes it sustainable?
- Who does (and will) like it?**
- What is the evidence that it will work?
- Does it support social equity?**



Making Places for People
Christie Coffin & Jenny Young

The
wholeness of place
demands a
systems design approach

Is GLASGOW a “Whole City”?



“

Cities have the capability of providing something for everybody, only because, and only when, they are created by everybody.”

JANE JACOBS

In search of Place **BUILDING** the **EVIDENCE**

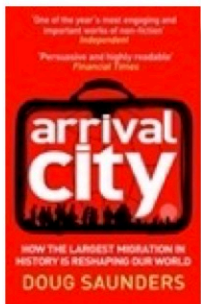
The Cities of Glasgow – looking through different lenses

Place Commission\Glasgow
City Urbanist\Glasgow

International

A reputation based on:

- ✓ Culture
- ✓ Sport
- ✓ Creativity
- ✓ Diversity
- ✓ Living



“Scotland without Glasgow ...would have no worldly dimension.”

“Its very important for cities all around the world to reinvent themselves., and Glasgow is a good example of that” **ZAHA HADID**

Metropolitan

The Bigness of Glasgow

Glasgow Primary Urban Area

Glasgow City Council
East Dunbartonshire Council
East Renfrewshire Council
Renfrewshire Council

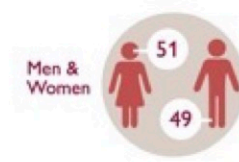


Everyday

The Sum of Small Things

GLASGOW 2021

There are over 630,000 people living in Glasgow. Represented in 100 people, the population of the city looks like this.



Ethnicity



Age



Disability



Data sources: National Records of Scotland, Glasgow City Council, Scottish Index of Multiple Deprivation, Understanding Glasgow.

Figure 5-7: EU Quality of Life Survey 2015

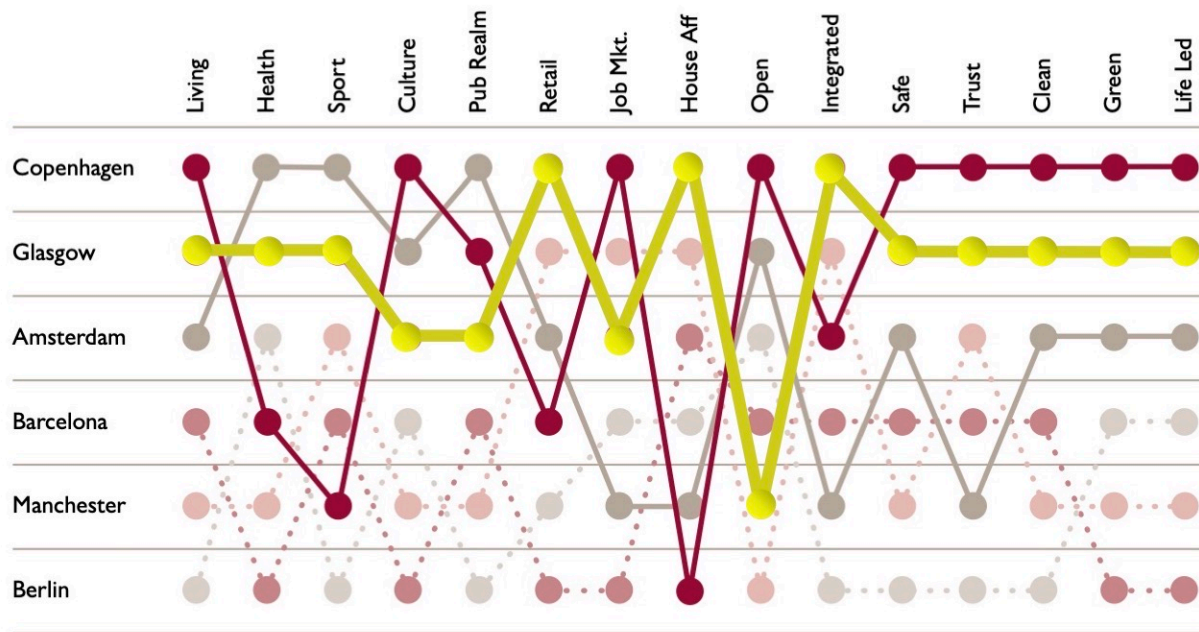
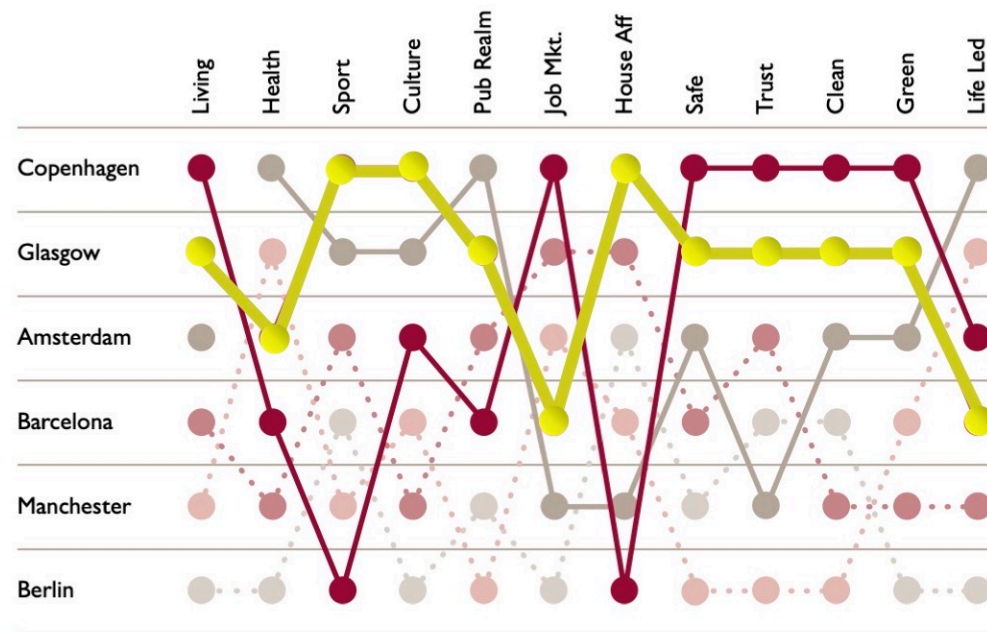



Figure 5-8: EU Quality of Life Survey 2020



'Retail', 'Open' and 'Integrated' were deleted from the survey between 2015 and 2020.



What we mean when we talk about place

“

Place is one of the most multi-layered and multi-purpose words in our language.”

ALESSANDRO DELL'ORTO

The Ubiquity of Place

Place is everywhere, places are all around us. Everywhere is some place. Place is a general construct, a concept that gives everywhere some qualities, some specificity whether cultural, social, environmental or economic. And these in turn connote other qualities – ceremonial, beautiful, tranquil, vibrant, community, busy, unloved places.

PLACE – What do we mean?

The virtuous loop of place quality and value



Outcomes: 'big ticket' policy arenas



Source: Carmona (2019)

Health outcomes

- Better physical health
- Better mental health
- Better general fitness
- Greater daily comfort
- Enhanced quality of life

Social outcomes

- Fewer accidents
- More social integration
- Lower rates of crime
- Better educational outcomes
- Street-level viability and sociability
- Civic pride
- Inclusiveness
- Enabling environments for older age
- Enabling places for people with disabilities

Economic outcomes

- Residential property uplift
- Retail property uplift and reduced vacancy
- More viable investments
- Increased local tax base
- Reduced public expenditure
- Lower costs of living
- Higher productivity

Environmental outcomes

- Reduced energy consumption
- Reduced carbon emissions
- Adaptive reuse of buildings and spaces
- Reduced pollution
- Greater resilience
- Ecological diversity

Source: Carmona (2019)

VALUE | QUALITY | ATTACHMENT

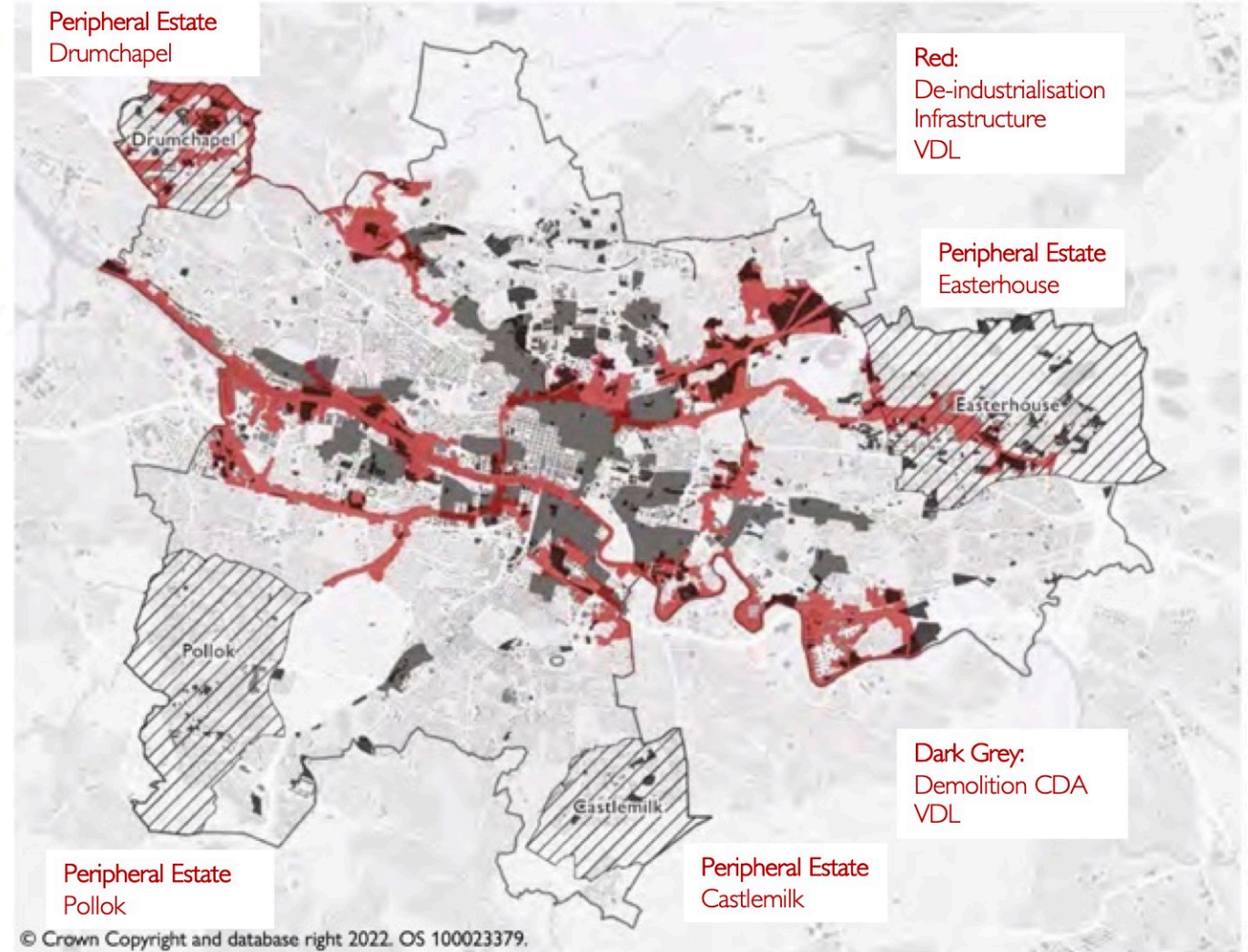
Place Commission \Glasgow
City Urbanist \Glasgow

The four eras of modern Glasgow

“

The city of Glasgow fascinates and intrigues – its rise, fall and reinvention, its history and modernity, its reputation as ‘Red Clydeside’ and its powerful architecture all give the city a myth and a legend.”

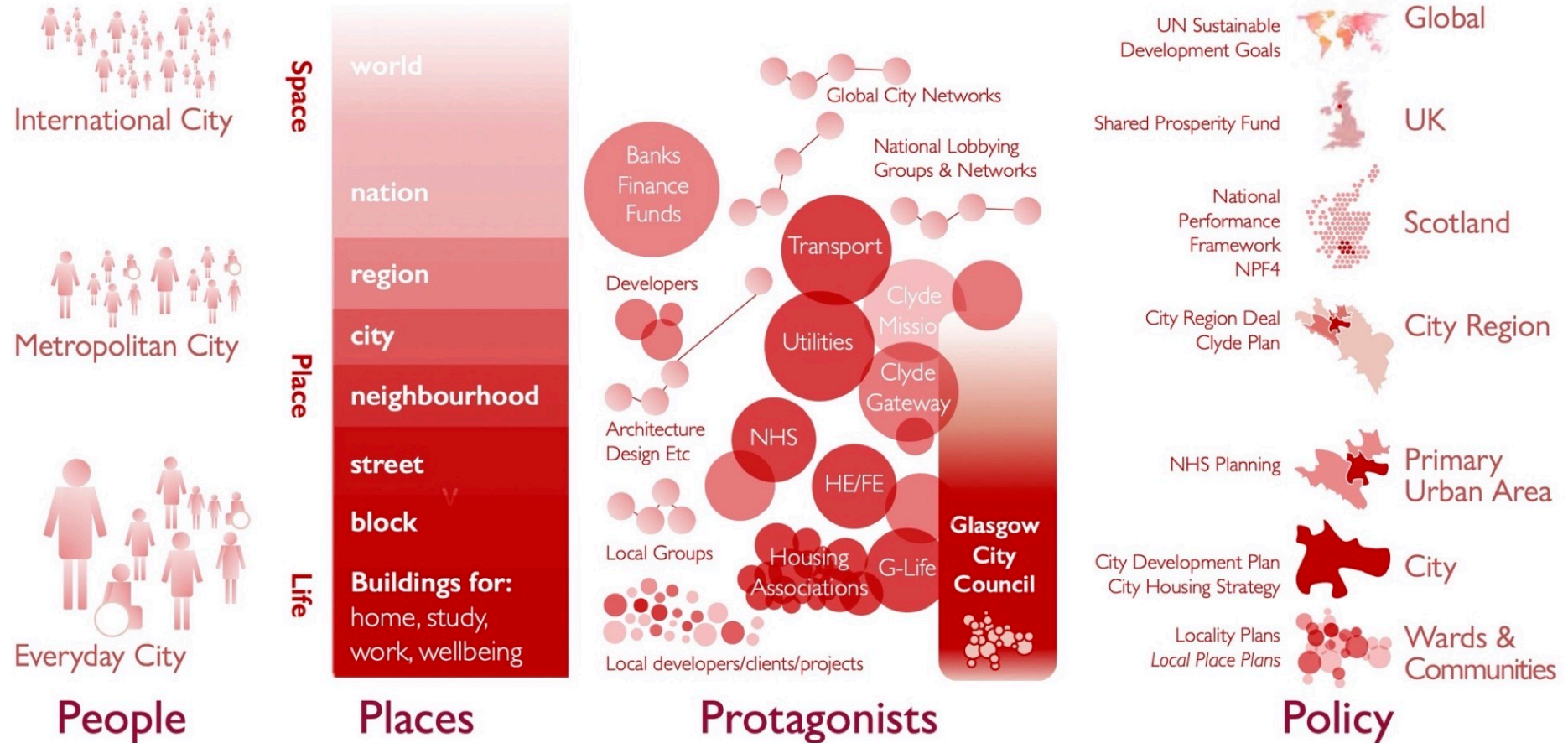
KEITH KINTREA & REBECCA MADGIN (2020)



Source:
Glasgow City Council

The map shows the aggregate effect of motorway construction, demolition from comprehensive development areas and the vacant and derelict land from deindustrialisation.

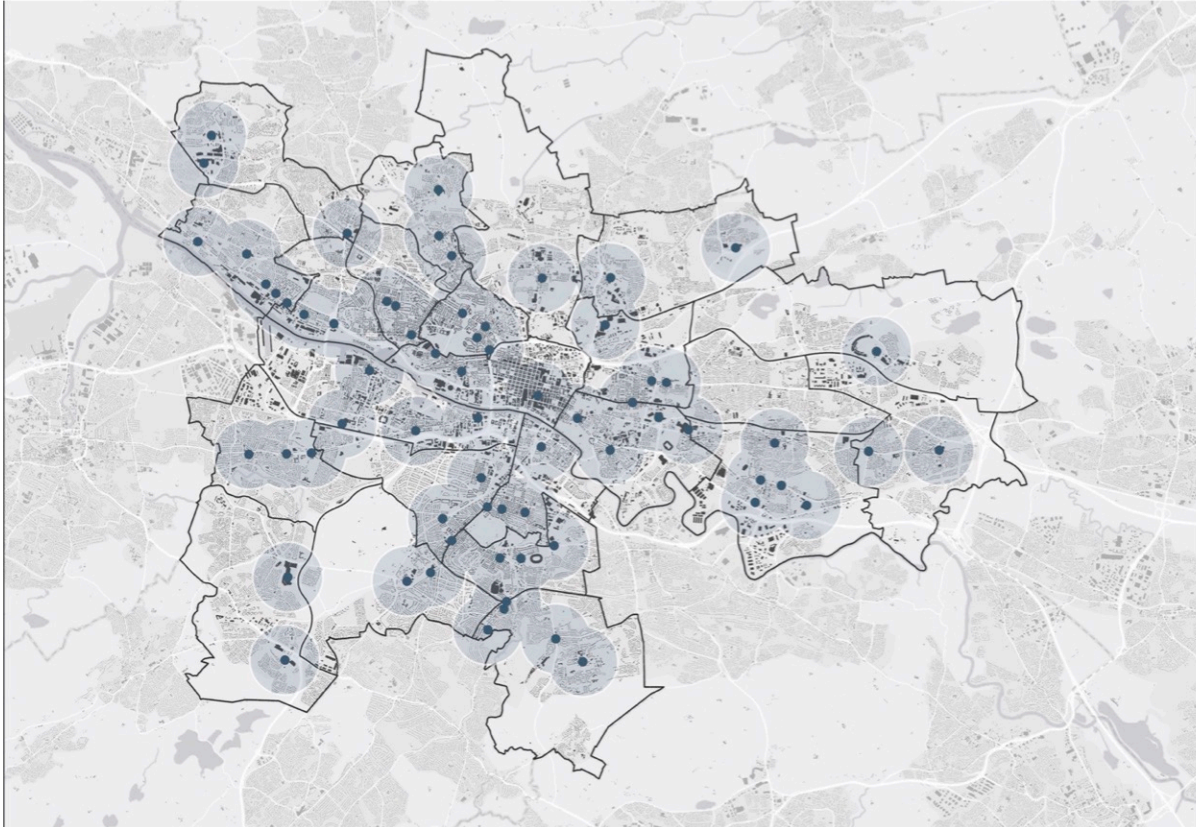
Investigations in place\ Enquiry & Reflection – a Place Ecosystem?



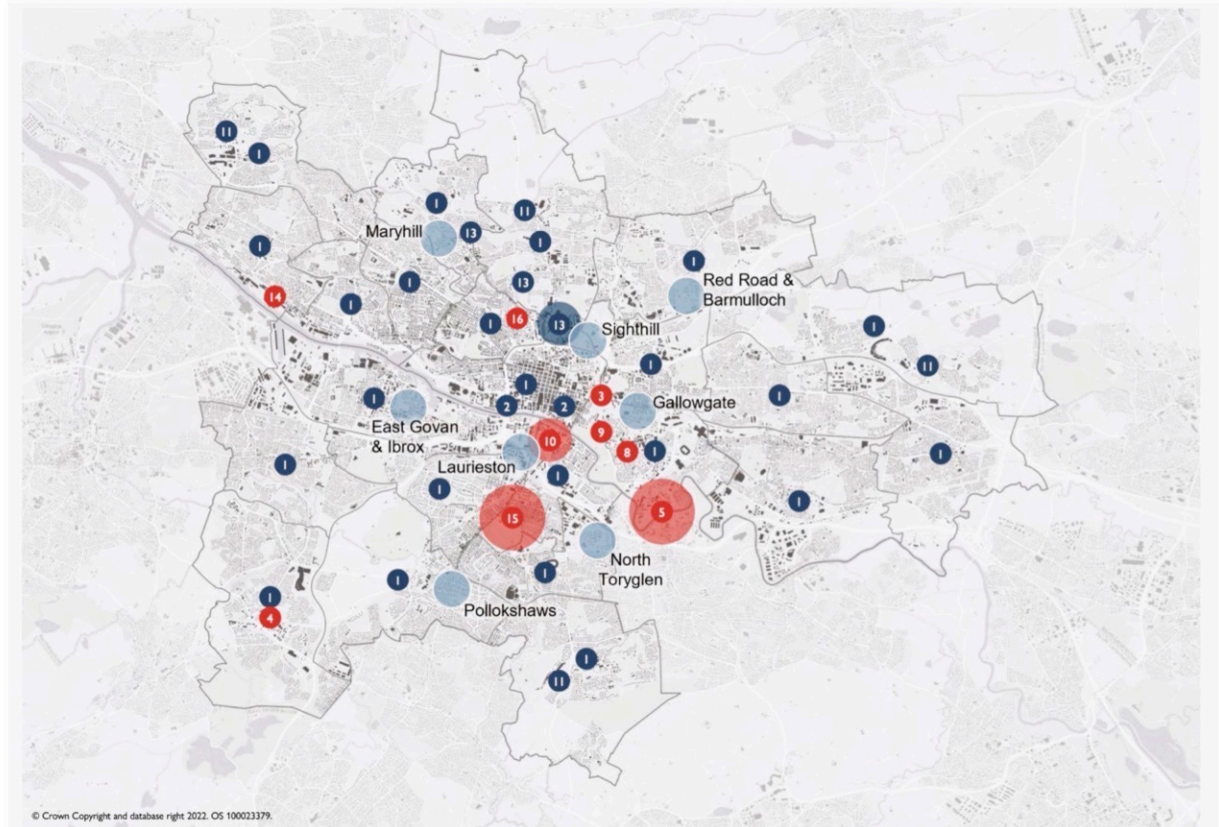
“Glasgow is at its most alluring, when it dreams of being a better version of itself.” **RORY OLCAYTO**

Place Commission\ **Glasgow**
 City Urbanist\ **Glasgow**

The Places of Glasgow\ of people, for people, by people



Glasgow City: Geography of Neighbourhoods



Glasgow City: Typology of Place

The PLACES of Glasgow



1 \AiR\

Artists in Residence is a city-wide project to bring engagement with the arts close to communities across each of the 23 wards in Glasgow.

Place Credentials: Community Engagement, Community Empowerment, Public Enterprise, Inspirational Intent, Education



2 \After the Pandemic\

After the Pandemic uses creativity and community to rethink our environments, reimagine our cities, and redesign our communities to be greener, more vibrant, and more resilient.

Place Credentials: Community Engagement, Community Activation, Climate Action, Partnership, Inspirational Intent



3 \Bell Street Stables\

Bell Street Stables is a positive example of how a historic industrial building can be restored for modern use.

Place Credentials: Excellent Design, Public Enterprise, Climate Action, Procurement



4 \CCI\

The Centre for Civic Innovation (CCI) is a citizen-centred design team within Glasgow City Council responsible for establishing a design-led approach to the understanding of societal shifts and civic experience within the city.

Place Credentials: Community Engagement, Community Empowerment, Public Enterprise, Excellent Design, co-creation, Education



5 \Clyde Gateway\

Clyde Gateway is an urban regeneration Company established to deliver significant social, economic, and physical change across East Glasgow and South Lanarkshire.

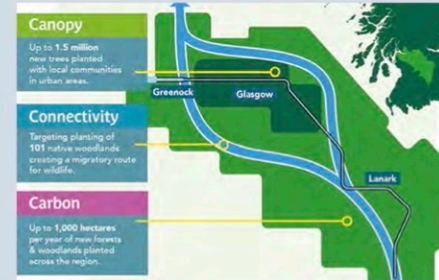
Place Credentials: Community Engagement, Excellent Design, Public Enterprise, Governance, Partnership, Procurement, Delivery, Longevity



6 \Clyde in the Classroom\

Clyde in the Classroom is a hands-on project which uses the life history of a native Scottish species, the brown trout, to promote awareness of river ecology among young people across the River Clyde catchment.

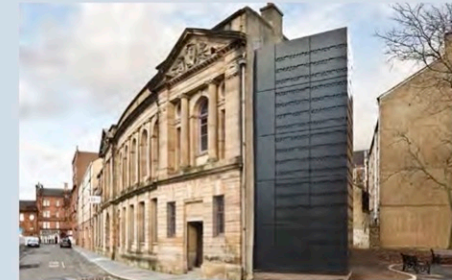
Place Credentials: Community Activation, Climate Action, Education, Delivery



7 \Clyde Climate Forest\

The Clyde Climate Forest is a project that aims to plant 18 million trees across Glasgow City Region and has the potential to benefit quality of life, quality of place, and wildlife habitats.

Place Credentials: Community Activation, Climate Action, Education, Delivery



8 \Glasgow Women's Library\

The Glasgow Women's Library is a leading charity and social enterprise that supports thousands of women across Scotland every year by coordinating and hosting a range of public events, services, cultural programmes, and learning opportunities.

Place Credentials: Community Empowerment, Public Support, Explicit Values, Inspirational Intent, Education

The PLACES of Glasgow



9 \Monteith Row\

Monteith Row is a housing project in the inner eastend of Glasgow that has restored a neglected city block and revitalised the listed Monteith Hotel.

Place Credentials: Excellent Design, Public Enterprise, Climate Action, Procurement



10 \New Gorbals\

New Gorbals is regarded as an exemplar of masterplan-led area regeneration. New Gorbals Housing Association, established by residents in 1989, has played a pivotal role in the transformative change.

Place Credentials: Community Empowerment, Community Activation, Governance, Partnership, Procurement, Longevity



11 \On the Edge\

On the Edge is a visual arts project by Bash Khan that raises awareness of the people and places in Glasgow left on the edge by the political, planning and development process. It asks 'how can communities reclaim and give themselves 'permission' to use their public spaces?'

Place Credentials: Community Empowerment, Community Activation, Inspirational Intent



12 \Refuweege\

Refuweege is a community-led charity which helps to ensure that forcibly displaced people arriving in Glasgow are greeted by kindness and generosity.

Place Credentials: Community Empowerment, Community Activation, Inspirational Intent, Values



13 \Scottish Canals\

Scottish Canals is a public body that has proactively improved the environmental and socio-economic conditions on and around the banks of the Forth & Clyde Canal by combining functional requirement with quality of place.

Place Credentials: Community Activation, Excellent Design, Public Enterprise, Climate Action, Partnership, Procurement, Delivery



14 \Scotstoun Community Garden\

Scotstoun Community Garden is a community-driven project that has seen a former industrial site be transformed into a tranquil and beautiful green space by volunteers who sourced their own funds, tools, and materials.

Place Credentials: Community Activation, Excellent Design, Climate Action



15 \South Seeds\

South Seeds is a community-led organisation based in Govanhill with the mission to enable Southsiders to lead more sustainable lives.

Place Credentials: Community Empowerment, Community Activation, Social Enterprise, Climate Action, Values, Education



16 \Woodside Towers\

The regeneration of the Woodside Multi-Storey Flats in North Glasgow is an exemplar for retrofitting high-rise housing and has helped to reduce energy demand and tackle fuel poverty for residents.

Place Credentials: Excellent Design, Climate Action, Community Engagement, Procurement

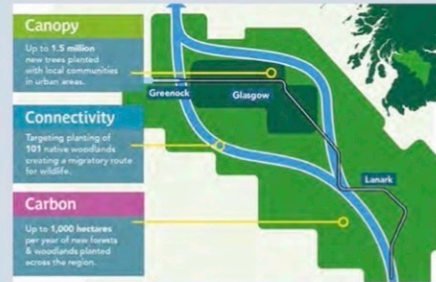
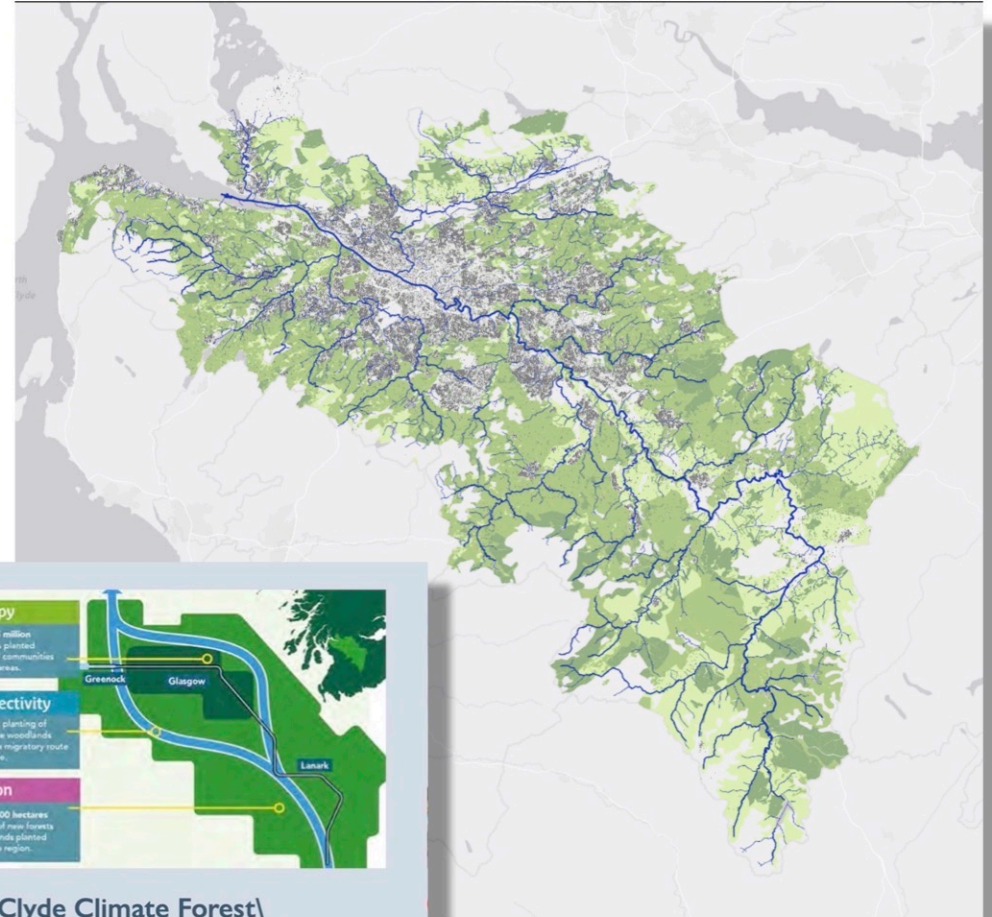
The Places of Glasgow \ place synergies \



6 \Clyde in the Classroom\

Clyde in the Classroom is a hands-on project which uses the life history of a native Scottish species, the brown trout, to promote awareness of river ecology among young people across the River Clyde catchment.

Place Credentials: Community Activation, Climate Action, Education, Delivery



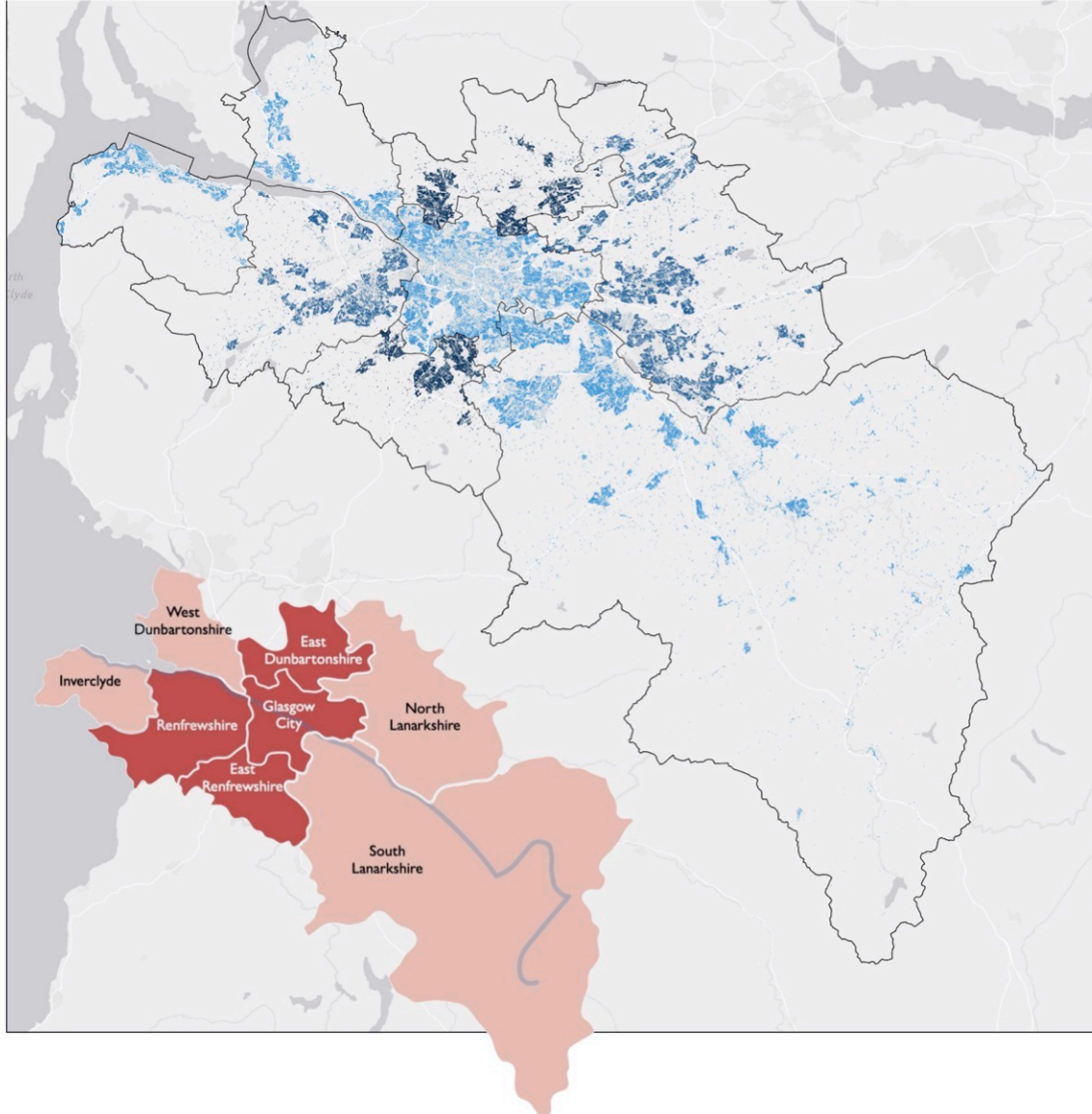
7 \Clyde Climate Forest\

The Clyde Climate Forest is a project that aims to plant 18 million trees across Glasgow City Region and has the potential to benefit quality of life, quality of place, and wildlife habitats.

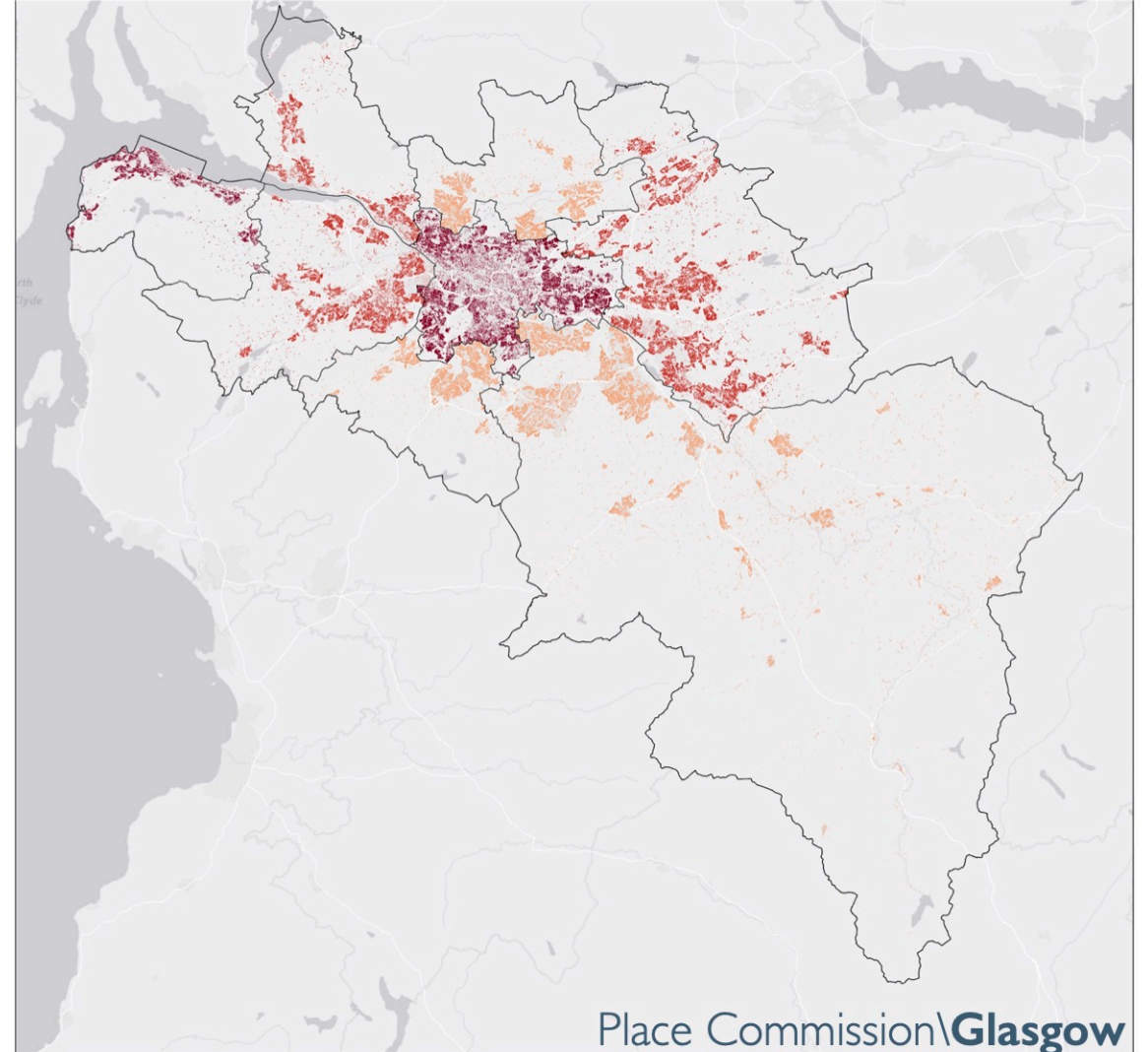
Place Credentials: Community Activation, Climate Action, Education, Delivery

The Cities of Glasgow – Issues of Metropolitanity

Glasgow City Region: Geography of Carbon Retrofit: Light = lower



Glasgow City Region: Geography of Disadvantage: Light = lower



The Places of Glasgow\ place synergies\



5 \Clyde Gateway\

Clyde Gateway is an urban regeneration Company established to deliver significant social, economic, and physical change across East Glasgow and South Lanarkshire.

Place Credentials: Community Engagement, Excellent Design, Public Enterprise, Governance, Partnership, Procurement, Delivery, Longevity



10 \New Gorbals\

New Gorbals is regarded as an exemplar of masterplan-led area regeneration. New Gorbals Housing Association, established by residents in 1989, has played a pivotal role in the transformative change.

Place Credentials: Community Empowerment, Community Activation, Governance, Partnership, Procurement, Longevity



Findings

- ❑ What we mean by place
- ❑ Glasgow's Journey
- ❑ Engagement & Engagement Outcomes
- ❑ The cities of Glasgow\ international, metropolitan, everyday
- ❑ The places of Glasgow\ of people, by people, for people
- ❑ Challenges remain
- ❑ Learning from Glasgow Applying the learning
- ❑ Capacity building\ a place system

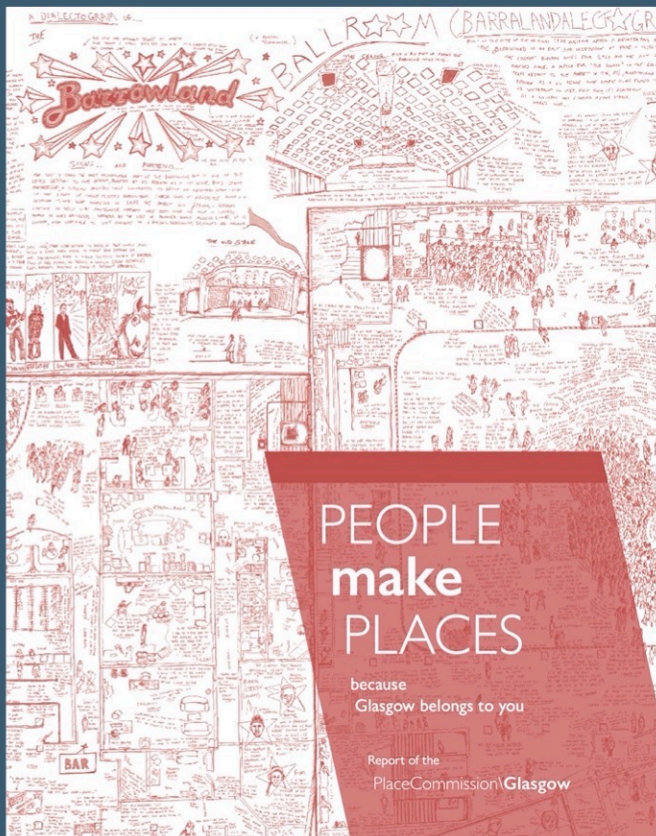
“

You won't often find us talking about climate change ...

... we think the best way to tackle climate change is by cutting energy use, reducing waste and using local spaces to grow food – bringing practical benefits to local people.

So, we talk about these things most of the time.”

Lucy Gillie, South Seeds



Place Commission\Glasgow
City Urbanist\Glasgow

PEOPLE make PLACES *Cities make Citizens*

Prof Brian M Evans PhD FRTPI FLI FCSD FAcSS FRGS AoU

Mackintosh School of Architecture

The Glasgow School of Art

b.evans@gsa.ac.uk

<https://radar.gsa.ac.uk/view/creators/496.html>

**GLASGOW
URBAN LAB
THE GLASGOW
SCHOOL OF ART**

Geneva UN Charter
Centre of Excellence

SMART SUSTAINABLE CITIES



UNECE