

# Redefining Glasgow as a feminist city

Miranda Webster, Abby Hopes, Julia Szimak, Rhiannon James, Stephanie Versha  
Chawla, Kirsty Mann, Nirali Bhatt-Roberts, Sofia Mangialardo, Isabel Deakin,



**Missing in  
Architecture - what  
we do:**

<https://missinginarchitecture.net/>

Identify what's Hidden  
or missing  
Reveal and respond to  
what's hidden or  
missing through  
imaginative and  
speculative design



Collaboration.....Co-Design.....Inclusivity.....partnership.....shared experiences.....learning by doing.....collective



# Student + staff interests – why join the partnership?

Miranda Webster, Abby Hopes, Julia Szimak, Rhiannon James, Stephanie Versha  
Chawla, Kirsty Mann, Nirali Bhatt-Roberts, Sofia Mangialardo, Isabel Deakin,

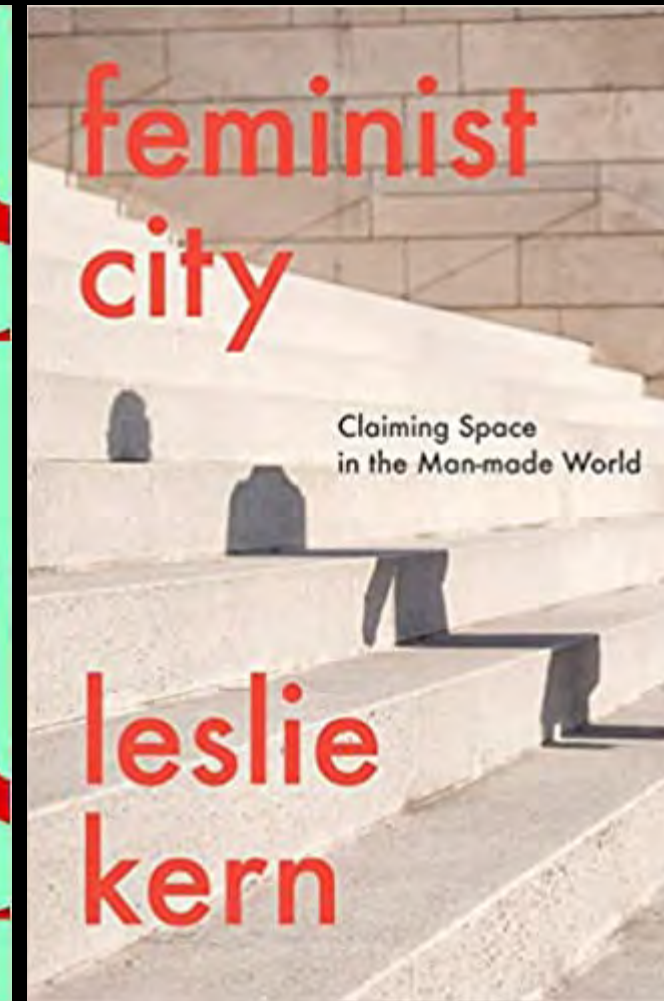
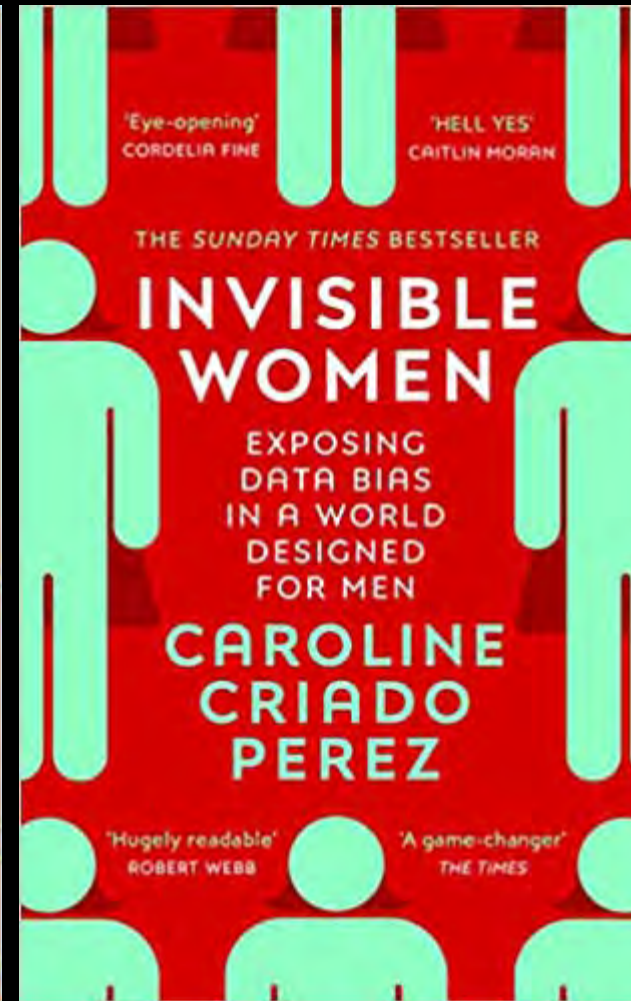
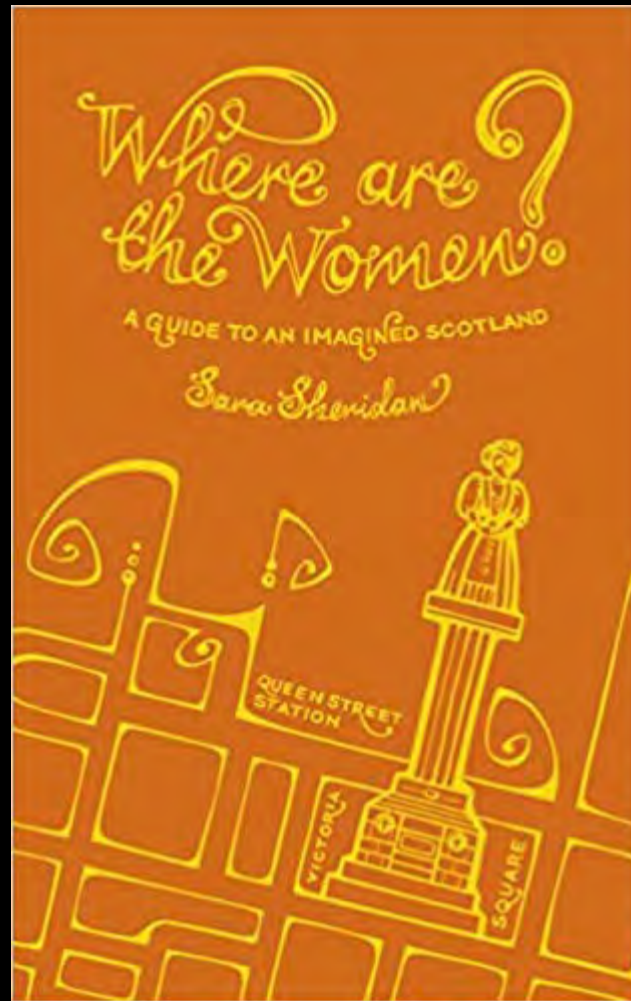




liisbeth.com

## Creating a Feminist City: We Rise by Lifting Others - LiisBeth

Its not only a justice-based imperative. There is also a strong business case behind the idea that The Feminist City would produce incredible economic development opportunities - and improve quality of life for all. So why aren't all cities rushing to b...

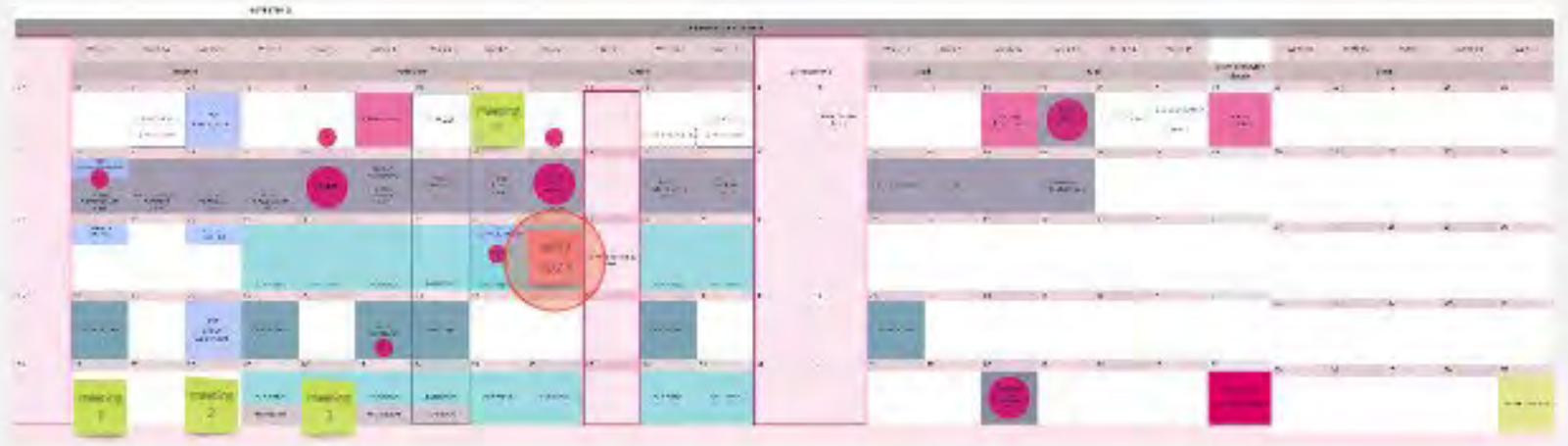


PROTECTED CHARACTERISTICS: age, disability, gender reassignment, marriage and civil partnership, pregnancy and maternity, race, religion or belief, sex, and sexual orientation.

Working in architecture often means...

Working in architecture often means... (continued text)

Working in architecture often means... (continued text)



INVITATIONS TO EVENT

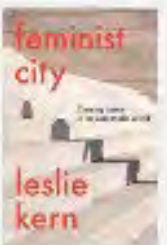
IDENTIFY UNDERNEED LOCATIONS

MAP OF GLASGOW LOCATIONS IDENTIFIED

SMALLER IDENTIFIED LOCATIONS



ONE MAP PER GROUP? LARGE SCALE MAP TO DRAW ON INDIVIDUAL ROUTES.



ACCESSIBILITY/ THRESHOLDS/  
PAVEMENTS/topography

PUBLIC TRANSPORT SYSTEMS

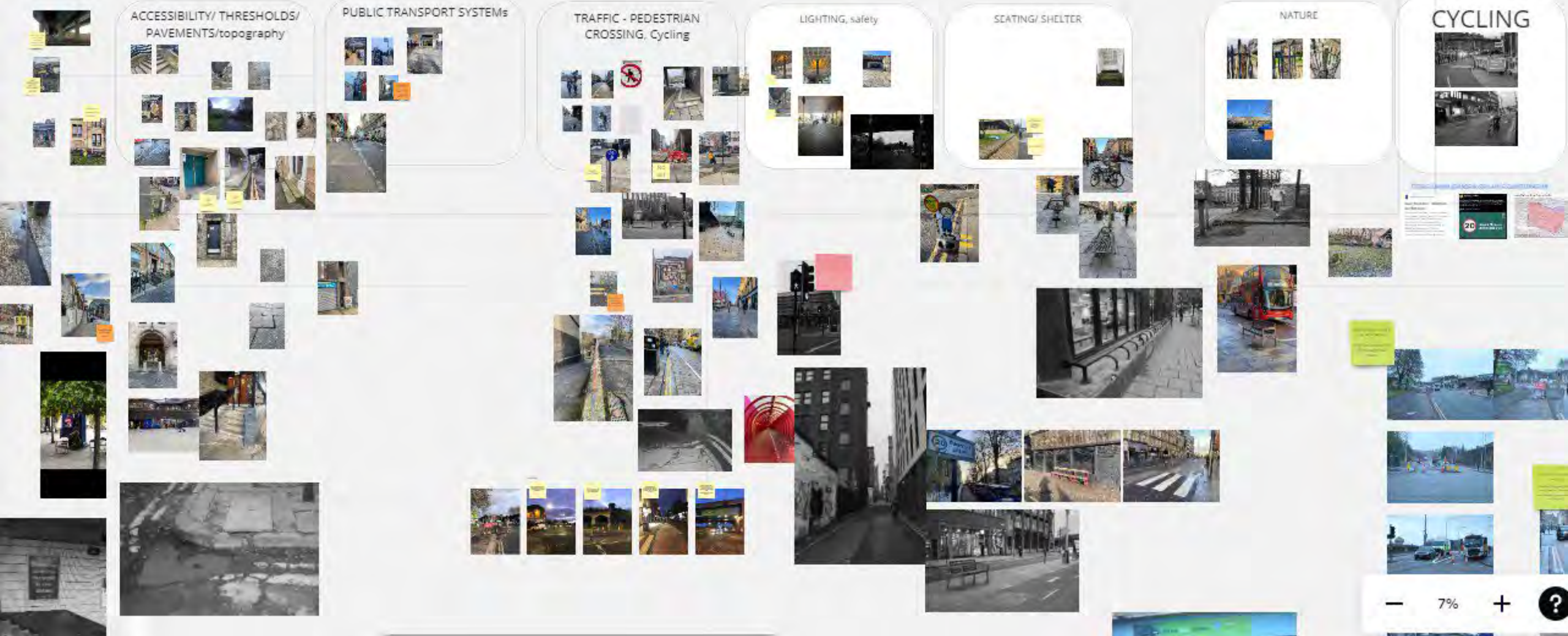
TRAFFIC - PEDESTRIAN  
CROSSING, Cycling

LIGHTING, safety

SEATING/ SHELTER

NATURE

CYCLING











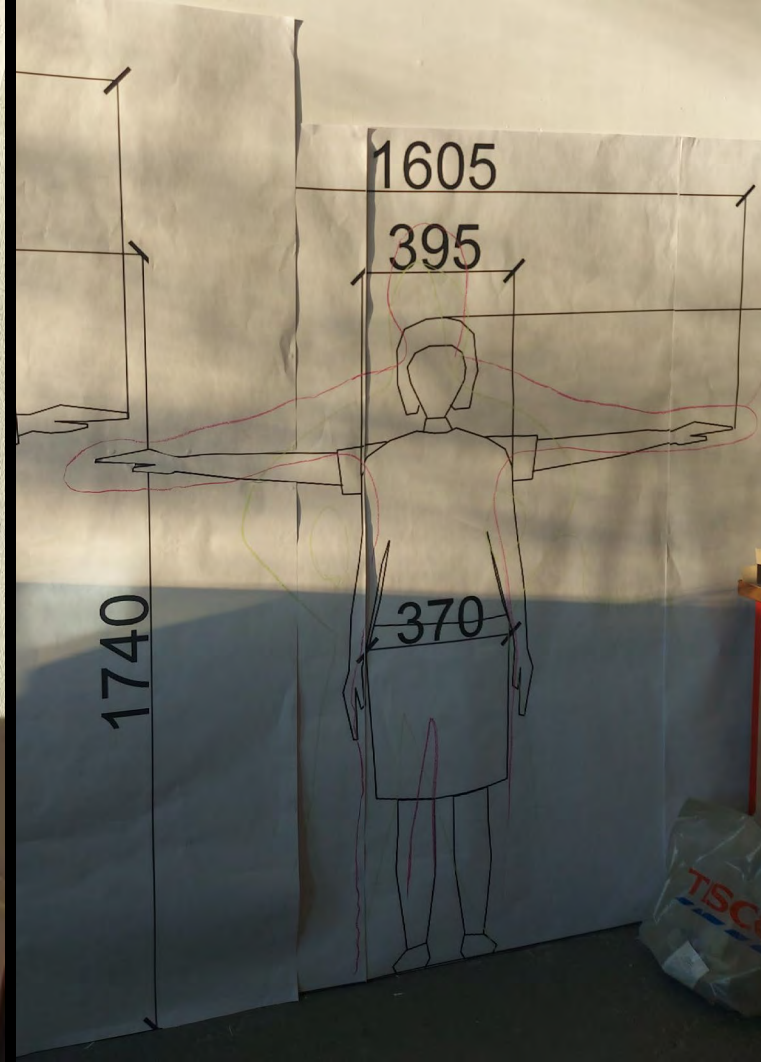
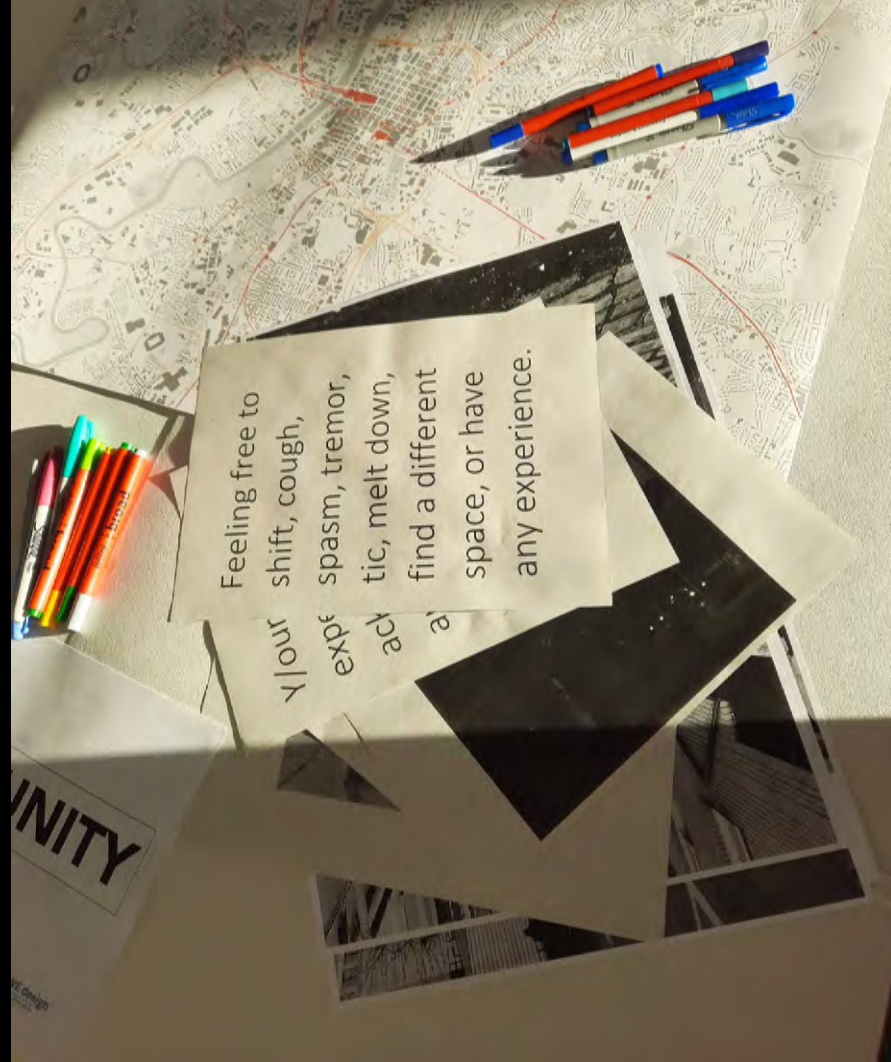
**International  
Women's Day 2023**

# Setting the scene

Miranda Webster, Abby Hopes, Julia Szimak, Rhiannon James, Stephanie Versha Chawla, Kirsty Mann, Nirali Bhatt-Roberts, Sofia Mangialardo, Isabel Deakin,







# Ice breakers

Miranda Webster, Abby Hopes, Julia Szimak, Rhiannon James, Stephanie Versha Chawla, Kirsty Mann, Nirali Bhatt-Roberts, Sofia Mangialardo, Isabel Deakin,



Photo credit: Glass-House





Photo credit: Glass-House



# Introduction to the Co design event.

@julescheeleillustration as a live visual scribe

Miranda Webster, Abby Hopes, Julia Szimak, Rhiannon James, Stephanie Versha  
Chawla, Kirsty Mann, Nirali Bhatt-Roberts, Sofia Mangialardo, Isabel Deakin,



Photo credit: Glass-House



Photo credit: Glass-House



Photo credit: Glass-House

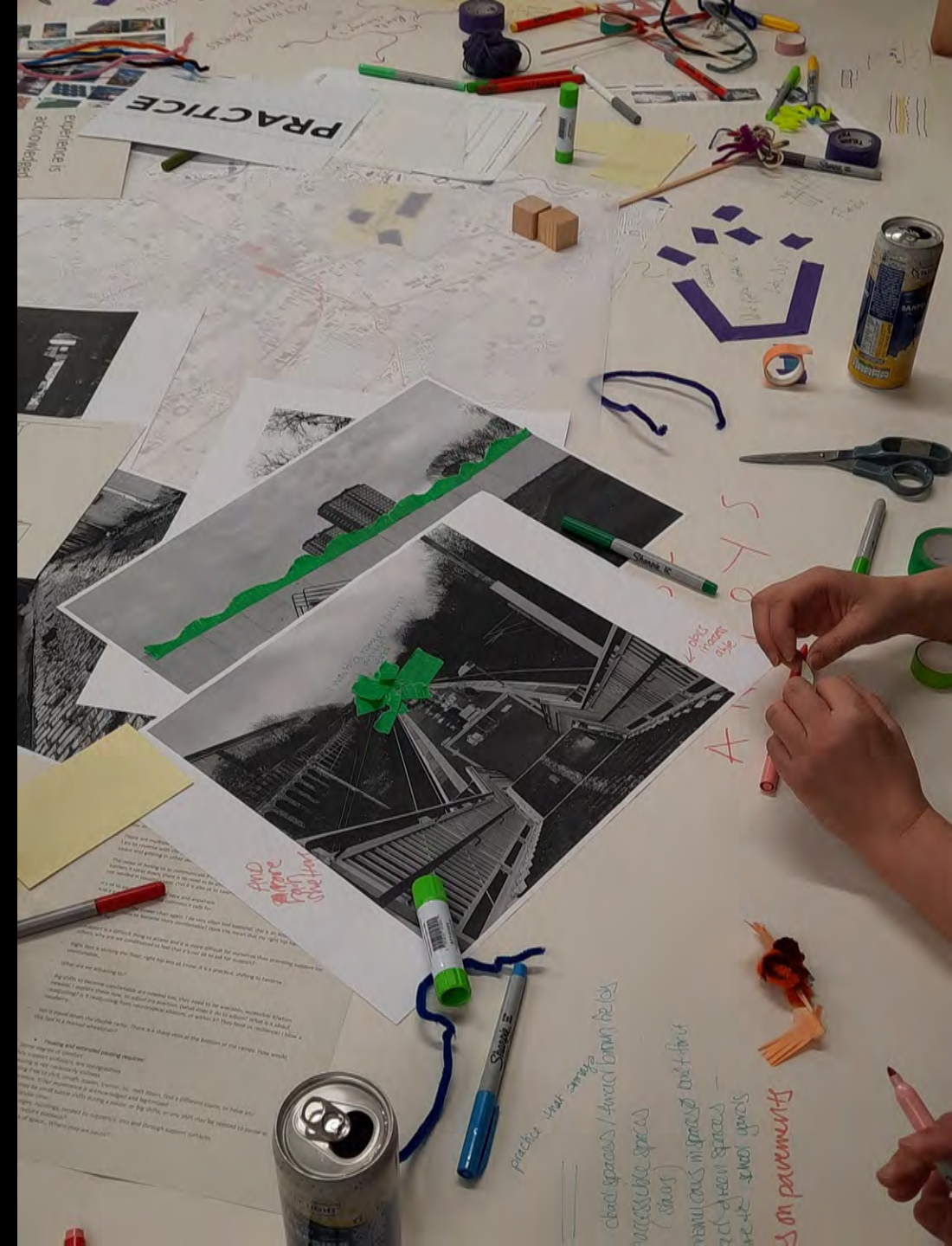
PRACTICE  
EDUCATION  
COMMUNITY  
ECOLOGY

- Miranda Webster, Abby Hopes, Julia Szimak, Rhiannon James, Stephanie Versha Chawla, Kirsty Mann, Nirali Bhatt-Roberts, Sofia Mangialardo, Isabel Deakin,

# PRACTICE

EDUCATION  
COMMUNITY  
ECOLOGIES

Kirsty Mann, Sofia Mangialardo



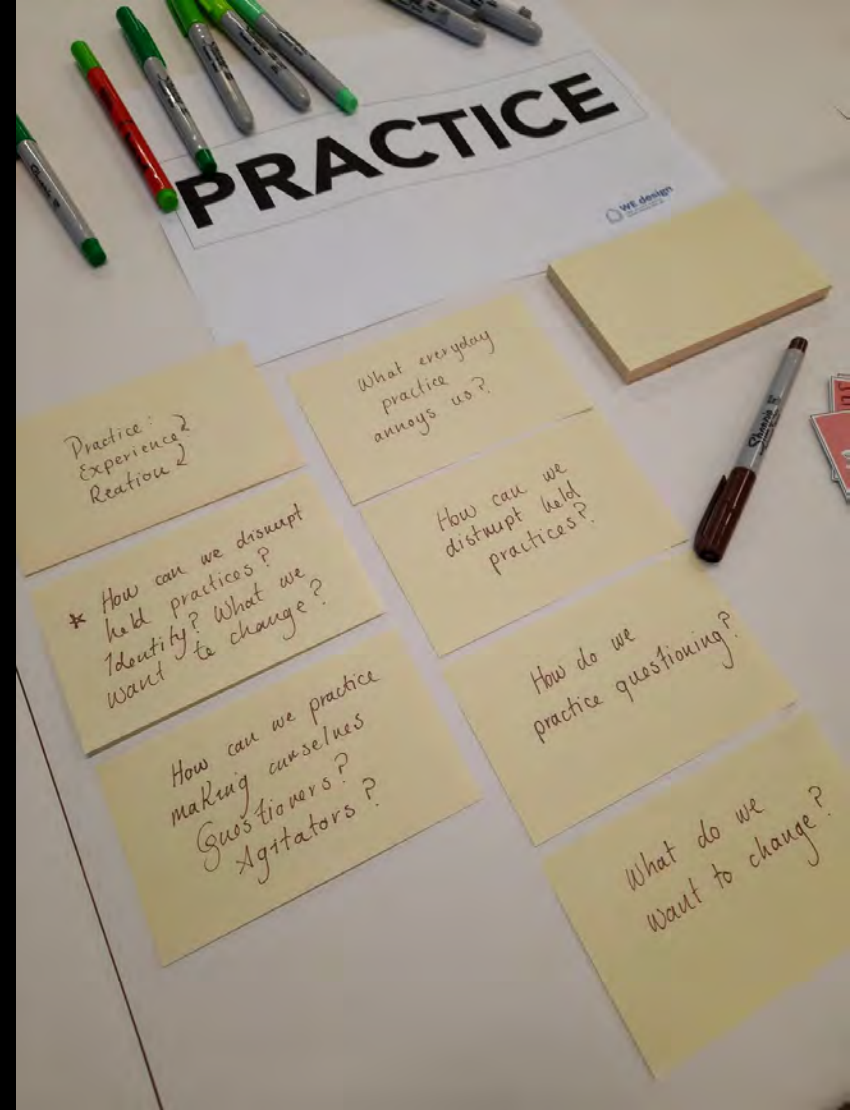
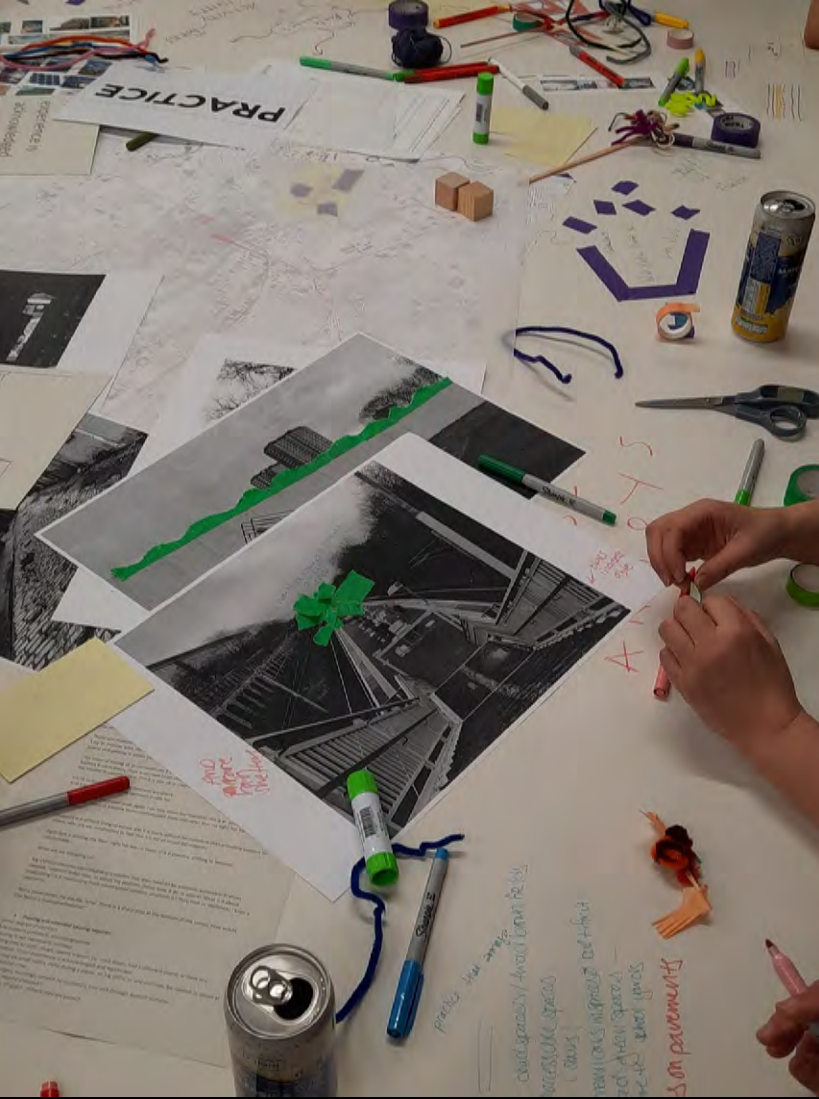




Photo credit: Glass-House





Photo credit: Glass-House



Photo credit: Glass-Hou

MEANWHILE.....@julescheeillustration



PRACTICE  
EDUCATION

COMMUNITY  
ECOLOGY

Rhiannon James, Stephanie Versha







Photo credit: Glass-Hou

PRACTICE  
EDUCATION  
**COMMUNITY**  
ECOLOGY

Nirali Bhatt-Roberts, Abby Hopes









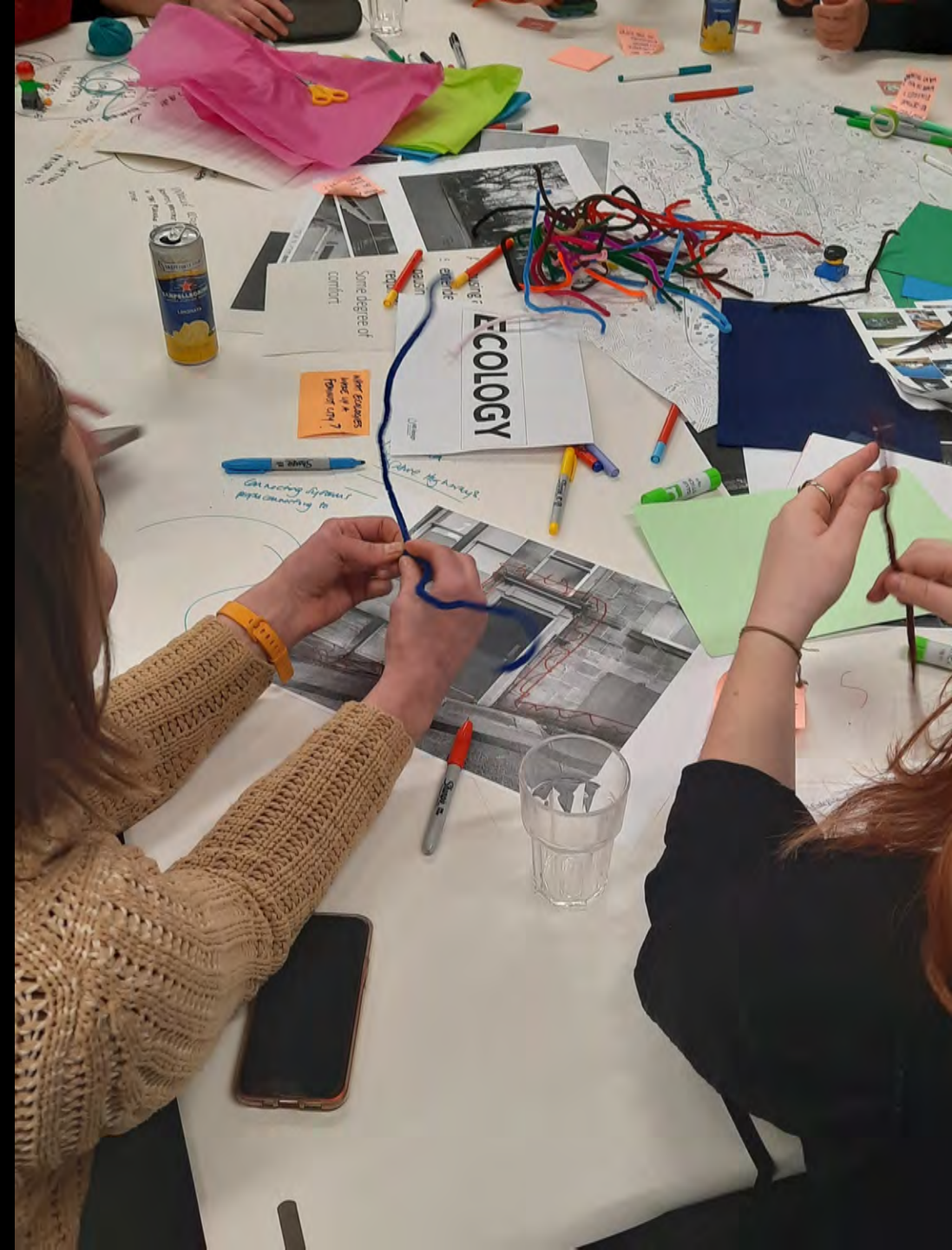
Photo credit: Glass-House

MEANWHILE.....@julescheeillustration



PRACTICE  
EDUCATION  
COMMUNITY  
ECOLOGY

Julia Szimak, Elly Mead



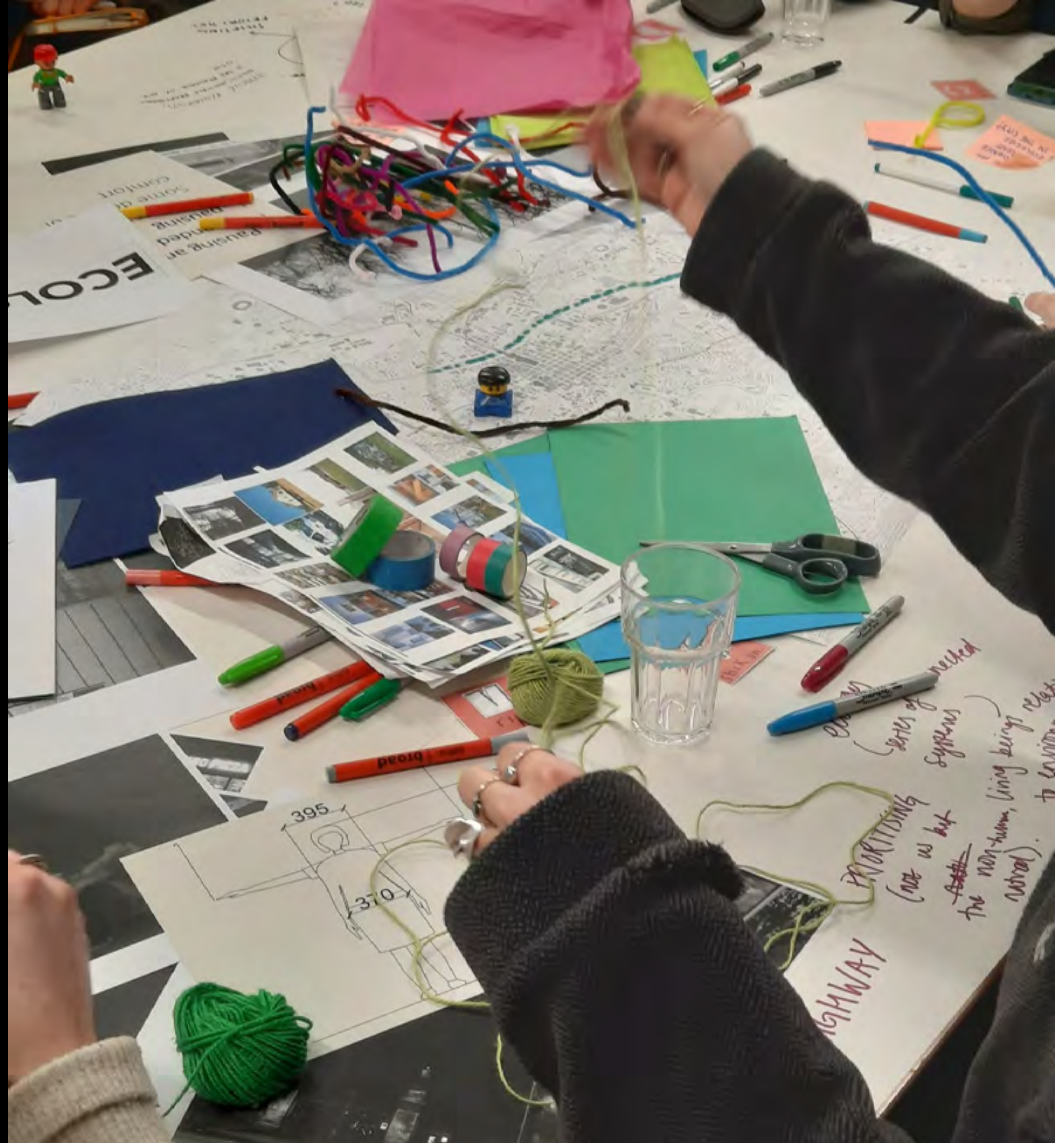




Photo credit: Glass-House



Photo credit: Glass-House



Photo credit: Glass-House



Photo credit: Glass-House





Photo credit: Glass-House



What /When is  
Education?



DEAD  
END

FREEDOM TO  
TRAVEL FOR  
FREE!

FREEDOM  
TO MOVE

Photo credit: Glass-House



Photo credit: Glass-House



Photo credit: Glass-House

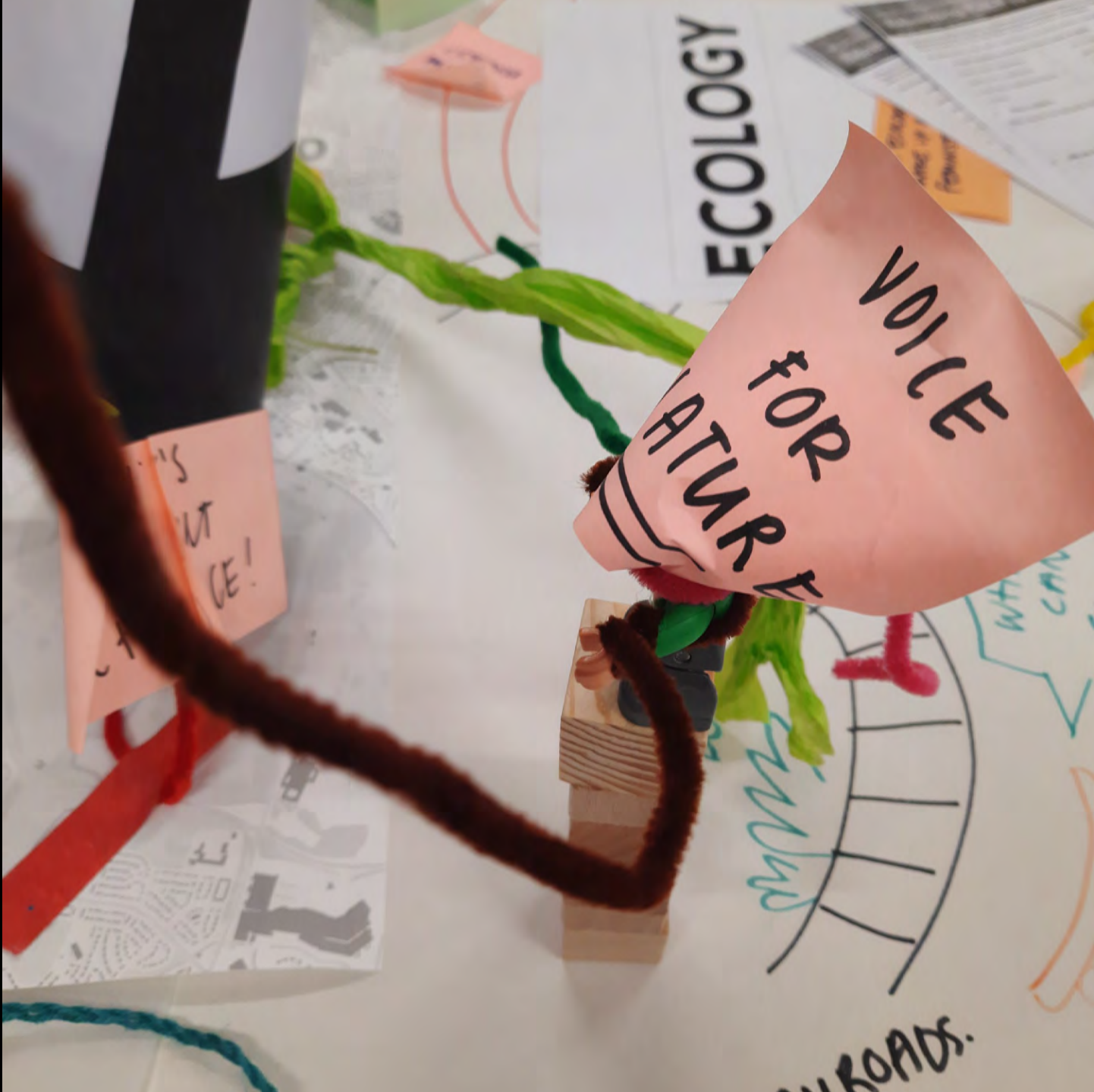
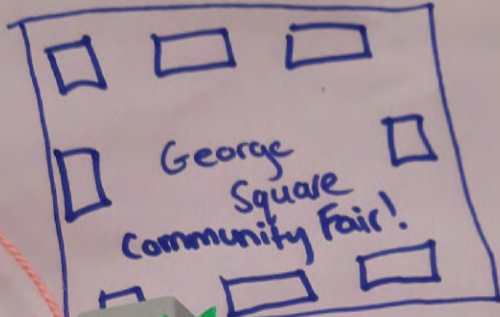


Photo credit: Glass-House



social circles in  
alternate communities



LIGHT



Photo credit: Glass-House





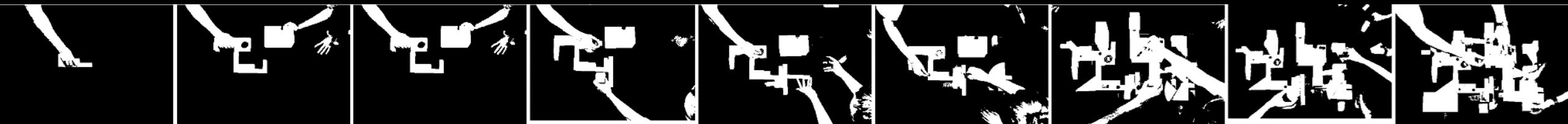
IT'S  
ABOUT  
CHOICE!

## TAKE AWAYS:

- Be more playful in design
- Being prepared
- Designing with people
- Practicing inclusivity through design and feminist practices + pedagogy
- Scales of engagement – recognizing different comfort zones
- Jargon free
- Challenging the fear of getting things wrong
- Valuing the process – taking the pressure off

## NEXT STEPS:

- We can do it again!
- Build into the studio culture and as part of the learning community
- Build on the conversations together
- Develop next events with Holly Bruce + students from GSA



# REdefine

Relearning PLACE

WHAT WOULD MAKE THE FEMINIST CITY WORK ANYWHERE?

CONNECTING PEOPLE WITH DESIGN

AN EXPERIMENTAL WORKING SPACE!

UNLEARN WHAT WE KNOW

HOW DO YOUNG WOMEN INTERACT WITH THE CITY?

LOOKING AT PARKS AND BUSES

BETTER USE OF DATA

IMPACT AND ASSESSMENTS!

GENDER COMPETENCE TRAINING...

FEMINIST SQUARE

COMMUNITY

MEANS GOOD COMMUNICATION

CONNECTION

LIGHTS

TRANSPORT

ACCESSIBILITY

ECOLOGY

HOW DO WE CONNECT?

URBAN GRID

WHO IS DESIGNING THESE SPACES?

TEARING UP THE RULE BOOK

RETAINING THE GOOD THINGS

CONNECTION EDUCATION

INCLUSION is the KEY!

DESIGNING FOR the MOST VULNERABLE PEOPLE IN OUR SOCIETY

A FEMINIST CITY IS SAFE FOR EVERYONE

ILLUSTRATION JULESSCHEELE.COM

Photo credit: Glass-House

# REDEFINING GLASGOW AS A FEMINIST CITY



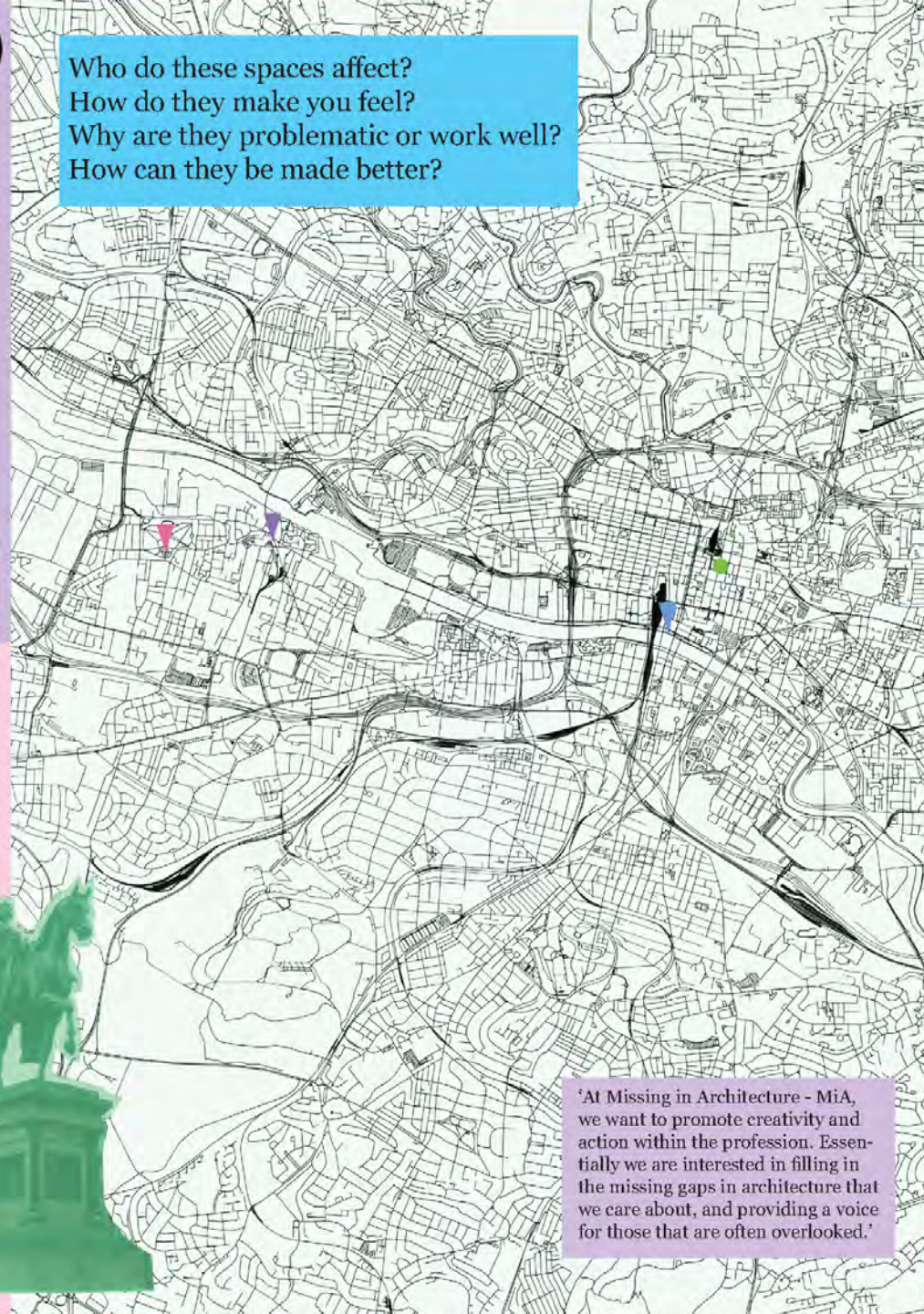
Recently, a motion from Green Councillor Holly Bruce has been passed at Glasgow City Council which will see Glasgow making women central to "all aspects of planning, public realm design, policy development and budgets".

We must question how we all experience the city, through our individual journeys and the spaces we each inhabit. Themes around accessibility/ thresholds/ pavements/ topography, hidden spaces, public transport systems, lighting, safety, seating/ shelter, traffic - pedestrian crossing, cycling, nature, air quality housing/ industry and play, affect everyone in different ways.

During the Architecture Fringe, we aim to collect photos that capture the individual experience of moving through the city of Glasgow. Providing a variety of starting points and a single end point to the walk, we will all take different routes and come across different obstacles or opportunities. By plotting these onto a map, a picture begins to emerge of the intersectional experiences in our shared city. We ask that these photos and any thoughts are shared to build into a focused co-design activity that engages the city council and those involved in policy making and intervening in the urban realm of the City of Glasgow.



Who do these spaces affect?  
How do they make you feel?  
Why are they problematic or work well?  
How can they be made better?



'At Missing in Architecture - MiA, we want to promote creativity and action within the profession. Essentially we are interested in filling in the missing gaps in architecture that we care about, and providing a voice for those that are often overlooked.'

## Queen Victoria

In Glasgow there are only four statues that represent women. A statue of Queen Victoria stands in George Square, even though Queen Victoria was added to the National Gallery's 'Slavery Hall of Shame' in 2021.



## Dolores Ibárruri

Dolores Ibárruri was a Communist and Republican who fought against fascism in the Spanish Civil war. She personally thanked the British forces for aiding this fight against fascism, which is why her statue stands in Glasgow. She was famous for her phrase 'No Pasaran' - 'they shall not pass' which she used frequently in speeches.



## Mary Barbour

Mary Barbour was a politician and activist who was well known for leading rent strikes and fighting for the rights of workers. She was one of Glasgow's first female councillors, but despite this, this stature was not erected until 2017.



## Isabella Elder

Isabella Elder was a philanthropist who was particularly interested in funding education, and funded the Queen Margaret College, which later merged with Glasgow University. It was the first University in Glasgow to admit women.

