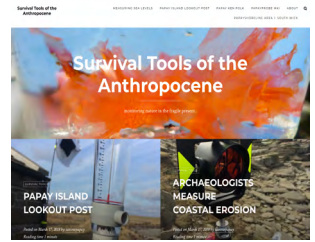


Visual elements presented in this PhD

Fieldwork blog

The wordpress blog documents the main events that took place throughout the research 'Survival Tools of the Anthropocene'. It shows a chronological record of the events held with images and text. The blog was written as the events took place from 2016-2019.

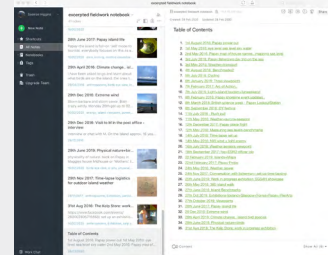
<https://papayshorelineresearchstation.wordpress.com>



Fieldwork notebook

The evernote fieldwork notebook shows excerpted notes and images documenting my thoughts, ideas, process work during my time spent living and researching on Papay (Papa Westray) in Orkney. The notes were written between 2016-2019 and are left in their original raw form.

<https://www.evernote.com/pub/higginsSaoirse/excerptedfieldworknotebook#st=p&n=5a5ecf31-5876-44d8-9244-7dc221b0efa2>



Interactive catalogue

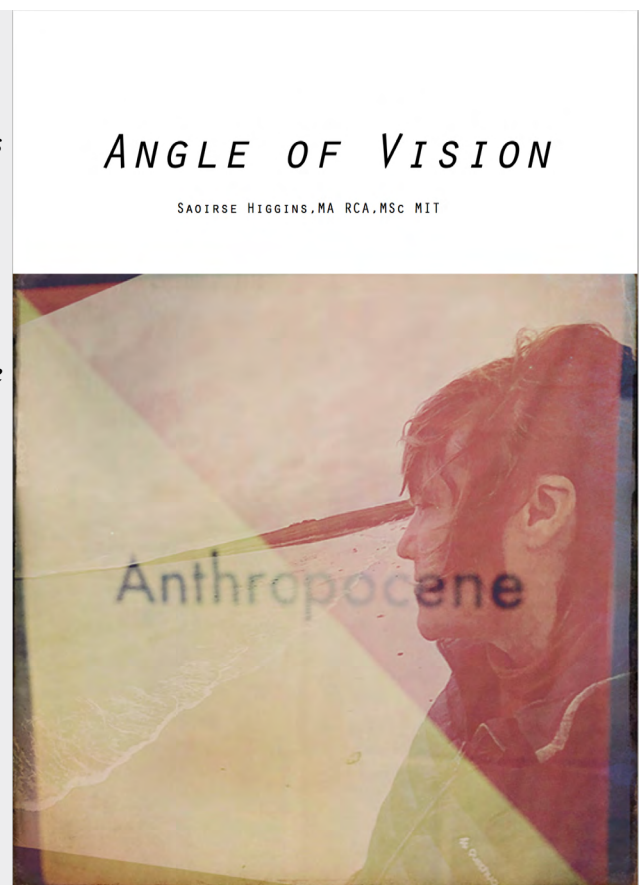
The interactive PDF catalogue is intended to be viewed in conjunction with the written thesis. The catalogue documents the PhD reflective practice developed over a three year time span of research in Orkney for 'Survival Tools of the Anthropocene'. It references three key reflective viewpoints from the research-local, relational and long viewpoints, within three exhibitions held on three consecutive days at The Kelp Store Arts and Heritage Centre on Papay during the island lockdown in April 2020. The exhibitions and catalogue presents an audio-visual interface with these viewpoints, illuminating the reflective aspects of the research and emphasising the island-situated context.

Exhibition 1, 2, 3
colour images, 360 VR video, sound, tool samples.

Exhibition 1: local view- researcher + island
<https://youtu.be/SeUiSR8c6AI>

Exhibition 2: relational view - island + islander
<https://youtu.be/ZArhMuLkFyw>

Exhibition 3: Long view - island + islander + global
<https://youtu.be/1g8w-dutxQA>



Key engagement tools

Papay probe - Thesis: figure 40
Interactive catalogue: exhibition 3: long view: island + islanders + external world
fieldwork blog: papayprobe-mki
fieldwork notebook:
22nd February 2017: *Papay Probe*
27th Oct 2019: *Exhibitions Iceland+Glasgow+Forres*

DIY positioning tool - Thesis: figure 42, 43
Interactive catalogue: exhibition 3: long view: island + islanders + external world
fieldwork blog: papayprobe-mki

DIY temperature-measuring kit - Thesis: figure 45-47
fieldwork blog: papayprobe-mki

DIY ice auger for core samples - Thesis: figure 44
fieldwork blog: papayprobe-mki
fieldwork notebook:
22nd February 2017: *Papay Probe*

DIY origami wind sensor kit - Thesis: figure 48-51
fieldwork blog: papayprobe-mki

Pumice rock - Thesis: figure 52-53
fieldwork blog: papayprobe-mki

Tide-movement observation kit - Thesis: figure 16-19
Interactive catalogue: exhibition 2: relational viewpoint: researcher + islanders

'Time and tide waits for no man' sandwich-board performance - Thesis: figure 17
fieldwork blog: papay shoreline area1: south wick

King Canute listening chair - Thesis: figure 24-25
fieldwork blog: papay shoreline area1: south wick

Shoreline and Intrepid HQ silver tent - Thesis: figure 27-28
fieldwork blog: papay shoreline area1: south wick
fieldwork notebook:
27th Oct 2019: *Exhibitions Iceland+Glasgow+Forres*

Flags

Papay shoreline flag- digitally printed stitched cotton drill. 50m x 50m. 2016
Thesis: figure 27-28
fieldwork blog: papay shoreline area1: south wick

Papay probe flags on customised fishing rod poles. indicating each papay probe experiment. canvas, markers, wool thread - Thesis: figure 39, 40
fieldwork blog: papayprobe-mki
fieldwork notebook:
27th Oct 2019: *Exhibitions-Iceland+Glasgow+Forres+Papay+PierArts*

Glacier windsock- re-stitched scaled down windsock from the Papay airport
fieldwork blog: papayprobe-mki

Anthropocene flag - referencing the international flag system -
'man over board' digitally printed cotton drill flag. 50m x 50m. 2016
Interactive catalogue p.17, p. 47
exhibition 1: local viewpoint: researcher + island

Benchmark flag - referencing the international flag system -
'papa-about to sail' - digitally printed cotton drill flag. 50m x 50m. 2018
Interactive catalogue p. 29
exhibition 2: relational viewpoint: researcher + islanders

Pap-ØY-cene flag - digitally printed cotton drill flag. 50m x 50m, 2018
referencing the international flag system - 'please communicate'
Interactive catalogue p.40, p. 47
exhibition 3: long view: island + islanders + external world

Key reflective tools

360 stereoscopic timelapse video tool - Thesis: figure 59, 61
Interactive catalogue: exhibition 1: local viewpoint: researcher + island;
exhibition 2: relational viewpoint: researcher + islanders
fieldwork notebook:
27th October 2019: *Viewpoints*
7th February 2017: *Arc of Action..*

Birds eye view tool - Thesis: figure 4, 5, 20, 21, 22
Interactive catalogue: exhibition 1: local viewpoint: researcher + island
fieldwork blog: papayshoreline area 1: south wick

Gopro kite tool - surveying and recording the island edges -Thesis: figure 26
Interactive catalogue: exhibition 1: local viewpoint: researcher + island
fieldwork blog: papayshoreline area 1: south wick

Gopro head camera with hard hat - figure 34, 41

Timelapse video tool - documenting caasie wall building, lyme grass planting,
papay fishing trip, island edges N, S, E, W - Thesis: figure 13, 15.
Interactive catalogue: exhibition 2: relational viewpoint: researcher + islanders
fieldwork blog: cassie-building-against-the-sea
fieldwork notebook:
14th July 2016: *Time-lapse set up*
24th Nov 2017: *Conversation with fisherman+ set up time-lapsing.*

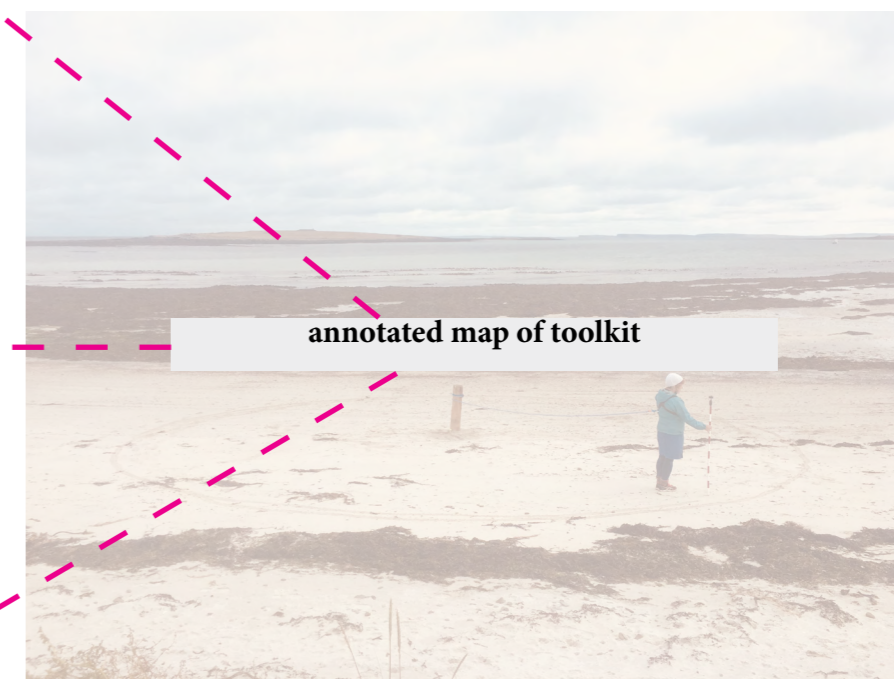
Papay house sea level measuring
Interactive catalogue: exhibition 2: relational viewpoint: researcher + islanders
fieldwork blog: measuring-sea-levels
fieldwork notebook:
2nd May 2016: *Papay map of house names...mapping sea level*
12th May 2016: *Measuring sea levels-benchmarks*
27th June 2016: *Island Benchmarks*
7th July 2016: *Light+island tourism+funweekend*
4th August 2016: *Benchmarks2*

Research exhibitions + ØY Festival

IcelandRecap event - Thesis: figure 54 -55
fieldwork notebook:
31st Aug 2016: *The Kelp Store: work in progress exhibition*
25th June 2018: *work in progress exhibition: SGSAH showcase*
27th Oct 2019: *Exhibitions Iceland+Glasgow+Forres:*
March 28th 2017 *work in progress exhibition SIM residency Iceland.*
June 2018 *Island Stabilities exhibition, Altaire campus + Glasgow School of Art.*
Dec 2019 *Arc of Vision exhibition, Glasgow.*

ØY festival
website: <https://oyfestival.wordpress.com/>
fieldwork notebook:
8th September 2016: *ØY festival*

Interactive catalogue:
exhibition 1: local viewpoint: researcher + island
exhibition 2: relational viewpoint: researcher + islanders
exhibition 3: long view: island + islanders + external world



engagement framework (thesis chapter 7)

slowing down and spending time with what is emerging and not the emergency (Stengers, 2005: 995)

resilient, multiple-scale thinking - articulating between human-local environment and global network

relational positioning - calibrating, adapting, pivoting and adjusting from the island of Papay looking out to the rest of the world.

a radical emphasis on context - in this case a specific island context, and a distributed 'meshwork' (Ingold, 2011: 84-6) with local island as the core position or interface to the rest of the world.

an ethical care and response system that helps to develop our response-ability for change.

a co-construction of viewpoints expert and non-expert, building a situated public of concern.

critical context - slowing down, spending time - understanding the research context



360 stereoscopic camera + hard hat circumnavigating the island.

video still from 360 camera.



surround sound microphones + camera attached to hard hat.



360 video still from camera.

360 stereoscopic camera + 10M washing pole + crab pot anchor.

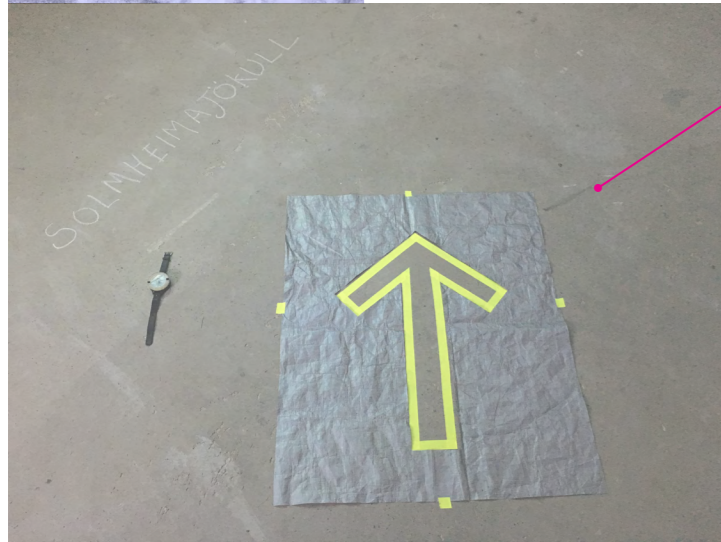


24 hour timelapse DSLR camera + DIY weather box + pallette tether.

relational positioning - re/calibrating, adapting, pivoting and adjusting



compass, green food colouring + spray bottle.
arrow pointing towards the island.

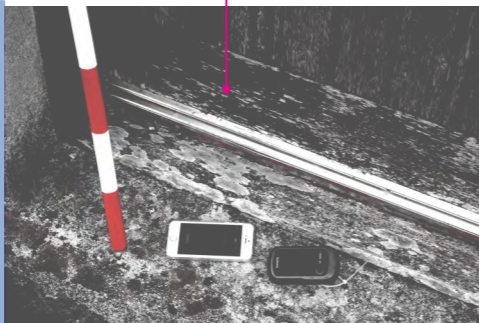


compass, chalked glacier name, arrow-stencil cut from papay shoreline HQ silver tent material, fluorescent tape arrow pointing to the glacier.



handheld garmin GPS map -
position of all dwellings on the island.

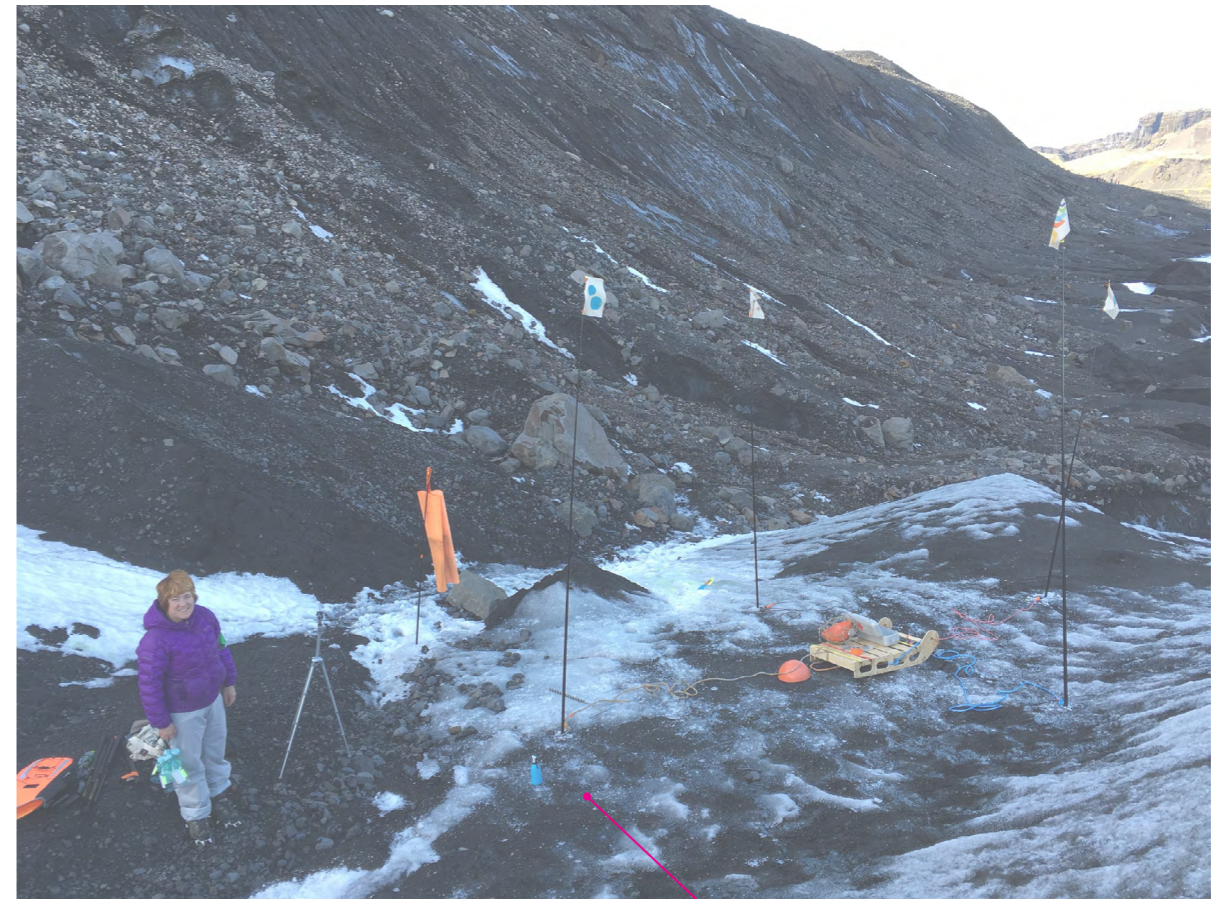
tide measuring-height measuring-stick,
measuring height above sea level of all island houses -
iphone, Garmin GPS



multiple scales - measuring-monitoring-long-short local-global micro-macro



Papay LookoutPost - monitoring local island weather
vintage anemometer, yellow event vest with island
map made from shoreline HQ silver tent material.



papay probe - monitoring global change on iceland
glacier. experiment flags, papay probe sledge,
cut down papay airport windsock, researcher

ethical care+response-ability for change



papay ken folk - recycled fishing rope mat making workshop using local expert.



ropecraft skills badges set of 8 local skills



community lyme grass planting event, south wick beach. timelapse video still

Caasie Sea Wall Building Weekend
 Papay Development Trust and the North Isles Landscape Partnership Scheme, invite you to take part in a weekend event learning the traditional skill of Caasie Sea Wall building.
 Protect and safeguard your island coastline for future generations.

"yet on other days the tempest seems awesome and endless, throwing tangle, spume, sand and stone high up the shore, the ocean seems to want to reclaim the isle, its wayward child, such a beating auld Hookin' takes" Jim Hewitson

Who: Papay and visiting Islanders
Where: Bay of Hookin.
When: October 5th + 6th 9.30am - 3.30pm
 Lunch and all safety equipment provided.
 Wear suitable outdoor clothing with wellies or work boots.

caasie sea wall building event poster.

co-construction of viewpoints - local-global-expert-non expert-network



birds eye view tool - hard hat, bamboo canes, bottle top, tape, gopro.

video still from gopro camera.



participants look out to sea from Papay Shoreline HQ silver tent.



papay probe testing sledge on south wick beach. remote glacier ice simulation.