

# PIONEERS OF POST-WAR PATTERN



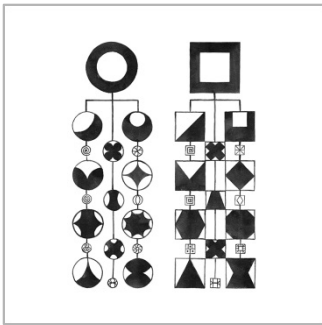
Boats



Totem



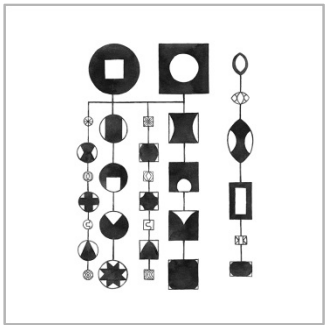
Twigs



Geometry 1



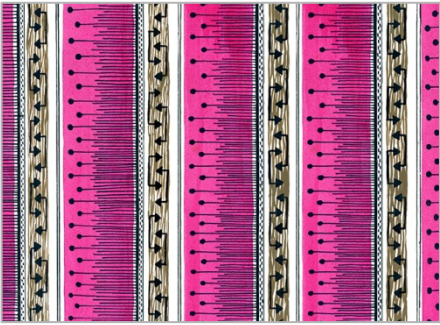
Mermaids



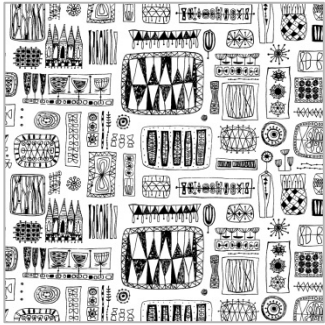
Geometry 2



Birds in a Tree



Dots & Arrows



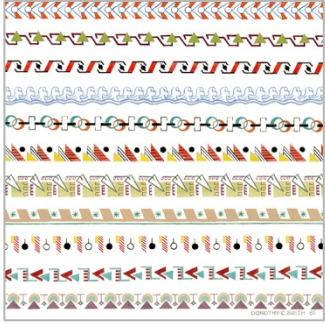
Spaces



Swings & Hammocks



Florabunda



Borders

The designs overleaf have been inspired by the work of mid-20th century female designers represented in GSA's Archives & Collections and digitally printed by GSA's Centre for Advanced Textiles.

The designs of GSA alumnae Sylvia Chalmers (c. 1928-2008), Dorothy Smith (c. 1923 - 2002) and Margaret Stewart (fl 1940s-1960s) demonstrate an eclectic mix of vibrant colours and abstract patterns. Some of these designs have never been previously produced as textiles but have now been adapted for 21st century use.

Designs are printed onto linen union fabric and are available as cushions and tea towels.

Cushions (45 cm x 45 cm) £49.50

Tea-towels (67 cm x 48 cm) £17.50

Four of the designs: *Boats*, *Geometry 1*, *Birds in a Tree* and *Florabunda*, are also available as wall hangings:

Wall-Hangings (84 cm x 119 cm) £165.00

GSA's Centre for Advanced Textiles, working with the Robin and Lucienne Day Foundation, also produces the world's only licensed digital reprints of the iconic 1950s/1960s furnishing fabrics designed by Lucienne Day (1917-2010). Fabric lengths of these designs can be purchased from:

[www.classictextiles.com](http://www.classictextiles.com)

To find out more about GSA's Centre for Advanced Textiles and GSA's Archives & Collections please ring: +44 (0)141 353 4742, email: [cat@gsa.ac.uk](mailto:cat@gsa.ac.uk)

or visit:

[www.catdigital.co.uk](http://www.catdigital.co.uk)

[www.gsa.ac.uk/archives](http://www.gsa.ac.uk/archives)

**CENTRE** FOR  
**ADVANCED**  
**TEXTILES**



**ARCHIVES AND**  
**COLLECTIONS**  
**THE GLASGOW**  
**SCHOOL OF ART**