

# THE GLASGOW SCHOOL OF ART

Rush-Bambrough, Sally (2001) Glass painting in Scotland, 1830-70. PhD thesis, The Glasgow School of Art

<http://radar.gsa.ac.uk/4928>

Copyright and moral rights for this thesis are retained by the author

A copy can be downloaded for personal non-commercial research or study, without prior permission or charge

This thesis cannot be reproduced or quoted extensively from without first obtaining permission in writing from the Author

The content must not be changed in any way or sold commercially in any format or medium without the formal permission of the Author

When referring to this work, full bibliographic details including the author, title, awarding institution and date of the thesis must be given

# **GLASS PAINTING IN SCOTLAND, 1830-70**

SALLY RUSH-BAMBROUGH

Ph.D thesis

submitted to the University of Glasgow  
from the Mackintosh School of Architecture, Glasgow School of Art

July, 2001

© Sally Rush-Bambrough 2001

## **Volume Two**

## LIST OF IMAGES

### 1. THE NINETEENTH CENTURY STAINED GLASS REVIVAL: RESTRICTION AND ENCOURAGEMENT

1. East window, Redbourne Church, Lincolnshire. *Opening the Sixth Seal* attributed to Hoadley & Oldfield, c.1840. After a painting by Francis Danby (National Gallery of Ireland). Detail.
2. Apse window, Saint Germain, Auxerrois, Paris. *Passion*, designed by Adolfe Napoleon Didron and executed by Louis Steinheil, 1839.
3. Apse window, Saint Germain, Auxerrois, Paris. *Passion*, designed by Adolfe Napoleon Didron and executed by Louis Steinheil, 1839. Detail – *Road to Calvary*.
4. Window, La Sainte Chapelle, Paris, 1243-8. Restored by Antione Lusson and Maréchal de Metz. Detail.

### 2. GLASS PAINTING IN SCOTLAND IN THE MID-NINETEENTH CENTURY: TRADE OR ART?

5. *Saint Andrew*, Museum, Scott Monument, Edinburgh. Designed by David Roberts and executed by Ballantine & Allan, 1855.
6. Decorated Gothic glass painting. James Ballantine, *Treatise on Painted Glass*, (1845).
- 7a. *Edinburgh Ale*, calotype by David Octavius Hill and Robert Adamson showing James Ballantine, Dr George Bell and Hill, c.1845.
- 7b. *James Ballantine*, calotype portrait by David Octavius Hill and Robert Adamson.

### 3. PIONEERS

8. Ballantine & Allan. The front elevation of 42 George Street, Edinburgh as altered 1844/5. (Edinburgh City Archives).
9. Ballantine & Allan. Workshops behind 42 George Street, Edinburgh as constructed 1844/5. Demolished. (Edinburgh City Archives).
10. William Cooper. Shop front at 18 Picardy Place, Edinburgh as it was in 1835. (Edinburgh City Archives).
11. Design for a stained glass window. William Cooper, *The Crown Glass Cutter and Glazier's Manual*, (1835), Plate XVII.
12. William Cooper, *The Crown Glass Cutter and Glazier's Manual*, (1835), Plate XIV.
13. Walter Gedde, *Booke of Sundry Draughtes*, (1615), Plate 78.
14. Walter Gedde, *Booke of Sundry Draughtes*, (1615), Plate 85.
15. Gothic window, Banner Hall, Taymouth Castle, Perthshire. Designed and executed by William Cooper, c.1841. Detail.

16. Geometric window, Chapel, George Heriot's Hospital, Edinburgh. Ballantine & Allan, c.1840. Detail.
17. Heraldic window, Chapel, George Heriot's Hospital, Edinburgh. William Cooper directed by James Gillespie Graham, 1839. Detail - Royal arms of Scotland.
18. South oriel window, Chapel, George Heriot's Hospital, Edinburgh. William Cooper directed by James Gillespie Graham, 1839. Detail - coat of arms.
19. East window, Mount Auburn Cemetery, Boston, America. Ballantine & Allan after *Night* by Thorwaldsen, c.1845.
20. Crom Castle, County Fermanagh, Ireland. Crighton arms, Thomas Willement, c.1841.
21. Gothic window, Banner Hall, Taymouth Castle, Perthshire. William Cooper, c.1841.
22. South oriel window, Chapel, George Heriot's Hospital, Edinburgh. William Cooper directed by James Gillespie Graham, 1839. Detail - coat of arms.

#### 4. BALLANTINE WATCHING AND WAITING

94. Sir John Soane, watercolour sketch of the Study at his house in Lincoln's Inn Fields, London (1792-1824), 1825.
95. Lantern over the Breakfast Parlour, Sir John Soane's house and museum, Lincoln's Inn Fields, London.
96. Sir John Soane, watercolour sketch of the Picture Gallery, Dulwich College (1811-12).
97. Sir John Soane, Drawing of the Mausoleum, the Picture Gallery, Dulwich College.
23. Baronial hall. Set design by Inigo Richards. (Morley, J., *Regency Design*).
24. Gothic window, Banner Hall, Taymouth Castle, Perthshire. William Cooper, c.1841. Detail.
25. Gothic window, Baron's Hall, Taymouth Castle, Perthshire. *Lords of Glenorchy*, William Raphael Eginton, 1815.
26. Gothic window, Baron's Hall, Taymouth Castle, Perthshire. *Lords of Glenorchy*, William Raphael Eginton, 1815. Detail.
27. *A Design for an Arrangement of an Armoury now erecting at Abbotsford, 1818*, Richard Hicks Bridgens. (Wainwright, C., *The Romantic Interior*).
28. *Sir Walter Scott in his Armoury*, Henry Stisted, (1826). (Wainwright, C., *The Romantic Interior*).
29. Heraldic window, Armoury, Abbotsford, Roxburghshire. Sir Walter Scott's arms, designed by Elizabeth Terry, installed 1818/19.
30. Heraldic window, Armoury, Abbotsford, Roxburghshire. *Margaret Tudor*, possibly copied from *Lacunar Strevelinse: A Collection of Heads, etched and engraved after the carved work*

which formerly decorated the roof of the King's Room in Stirling Castle (Edinburgh: 1817) by Elizabeth Terry, installed 1818/9.

31. South oriel window, Chapel, George Heriot's Hospital, Edinburgh. William Cooper directed by James Gillespie Graham, 1839. Detail.

32. Side window, Chapel, George Heriot's Hospital, Edinburgh. William Cooper directed by James Gillespie Graham, 1839. Detail.

33. Heraldic window, Bilton Grange, Warwickshire for Captain Hibbert. Designed by A.W.N. Pugin and executed by John Hardman & Company, 1847. (*Pugin: a Gothic passion*, ed. Atterbury, P. and Wainwright, C.)

34. Heraldic window, Saint Augustine's, Ramsgate. Designed by A.W.N. Pugin and executed by John Hardman & Company. (*Pugin: a gothic passion*, ed. Atterbury, P. and Wainwright, C.)

35. South oriel window, Chapel, George Heriot's Hospital, Edinburgh. William Cooper directed by James Gillespie Graham, 1839. Detail – coat of arms.

## 5. ARCHAIC TRUTH AND GOOD ART

36. East window, Saints Peter and Paul, Seal, Kent. Francis Wilson Oliphant, 1856. Detail – *Entombment*. (Harrison, M., *Victorian Stained Glass*).

37. *Assumption Window*, Chartres Cathedral, 1205-15. Detail - *Death of the Virgin*.

38. West window, Saint John the Baptist, Stamford, Lincolnshire. Francis Wilson Oliphant, 1856. Detail – *Entombment*.

39. East window, Ely Cathedral. Designed by Chartres Cathedral and executed by William Wailes, 1857. Detail – *Nativity*.

40. *Nativity Window*, Chartres Cathedral, c.1150. Detail – *Nativity*.

41. *A True Prospect of Saint Augustine's Church Now erecting at Ramsgate in the Isle of Thanet*, A.W.N. Pugin, 1849. (*Pugin: a Gothic passion*, ed. Atterbury, P. and Wainwright, C.)

42. *Saint Edmund*, A.W.N. Pugin, for Newman, J.H. and others, *Lives of English Saints*, (1844-5).

43. Design for a king, model for the windows for the House of Lords, 1846. (HLRO: Moulton-Barrett volume of drawings).

44. *William I*, model for the windows for the House of Lords now in the Peers' Refreshment Room, Houses of Parliament. Designed by A.W.N. Pugin and Francis Wilson Oliphant and executed by Hardman & Company, 1847.

45. East window, Erdington Abbey, Birmingham. *Heavenly Jerusalem*, designed by Francis Wilson Oliphant and executed by Hardman & Company, 1850.

46. *Orders of Angels*, All Saints Church, North Street, York, mid 15<sup>th</sup> century. 17<sup>th</sup> century drawing. (Crewe, S., *Stained Glass in England*).

47. *Procession of Maidens*, Parthenon Frieze, 442-438 B.C. (Paris: Louvre).

48. *Choristers' Window*, Ely Cathedral. Designed by William Dyce and executed by Francis Wilson Oliphant, 1857.

49. East window, Erdington Abbey, Birmingham. *Heavenly Jerusalem*, designed by Francis Wilson Oliphant and executed by Hardman & Company, 1850. Detail – *King David*.

50. *Choristers' Window*, Ely Cathedral. Designed by William Dyce and executed by Francis Wilson Oliphant, 1857. Detail – *King David*.

51. *Choristers' Window*, Ely Cathedral. Designed by William Dyce and executed by Francis Wilson Oliphant, 1857. Detail.

## 6. STATE PATRONAGE OF GLASS PAINTING

52. *Baptism of Christ*, Saint Catherine's Chapel, Ely Cathedral. Thomas Wilmshurst, 1857.

53. *Saints Peter and Paul Preaching at Antioch*, Saint Paul, Alnwick. Designed by William Dyce and executed by the *Königliche Glasmalereianstalt* of Munich, 1856.

54. *The Death of Ananias*, cartoon for a tapestry. Raphael, 1515. (London: Victoria and Albert Museum).

55. *Saints Peter and Paul Preaching at Antioch*, Saint Paul, Alnwick. Designed by William Dyce and executed by the *Königliche Glasmalereianstalt* of Munich, 1856. Detail.

56. *Saints Peter and Paul Preaching at Antioch*, Saint Paul, Alnwick. Designed by William Dyce and executed by the *Königliche Glasmalereianstalt* of Munich, 1856. Detail.

57. *Saints Peter and Paul Preaching at Antioch*, Saint Paul, Alnwick. Designed by William Dyce and executed by the *Königliche Glasmalereianstalt* of Munich, 1856. Detail.

58. Sketch design for a window for the new House of Lords, Ballantine and Allan, 1844. (HLRO: 176).

59. *Henry, Lord Beaumont*, Ballantine, J., *Treatise on Painted Glass*, (1845). Correction of the figure from the east window, Saint Peter, Barton upon Humber, as recorded in Fowler, W. *Engravings of Principal Mosaic Pavements*, (1804).

## 7. THE RE-GLAZING OF GLASGOW CATHEDRAL: A GRAND REVOLUTION

60. *Life of Saint Peter*, south-east transept, Lincoln Cathedral. George Hedgeland, 1854.

61. *Life of Moses and The Transfiguration*, west window, Norwich Cathedral. George Hedgeland, 1853.

62. *The Great Prophets Window*, north transept, Glasgow Cathedral. Designed by Heinrich von Hess and executed by the *Königliche Glasmalereianstalt* of Munich, installed 1861. Photographed by Duncan Brown, early 1860s. (Glasgow School of Art Archives).

63. *Ezekiel*, cartoon for *The Great Prophets Window*, north transept, Glasgow Cathedral. Heinrich von Hess. Photographed by Duncan Brown, early 1860s. (Glasgow School of Art Archives).
64. *The Great Prophets Window*, north transept, Glasgow Cathedral. Designed by Heinrich von Hess and executed by the *Königliche Glasmalereianstalt* of Munich, installed 1861. Detail – *Isaiah*.
65. Lancet window, north transept, Glasgow Cathedral. Designed by Franz Fries and executed by the *Königliche Glasmalereianstalt* of Munich, installed 1863. Detail – *Deborah*.
66. *Persian Sibyl*, Sistine Chapel. Michelangelo.
67. Lancet window, north transept, Glasgow Cathedral. Designed by Franz Fries and executed by the *Königliche Glasmalereianstalt* of Munich, installed 1863. Detail – *Angel*.

## 8. CONCLUSION: THE ART OF SCOTTISH GLASS PAINTING

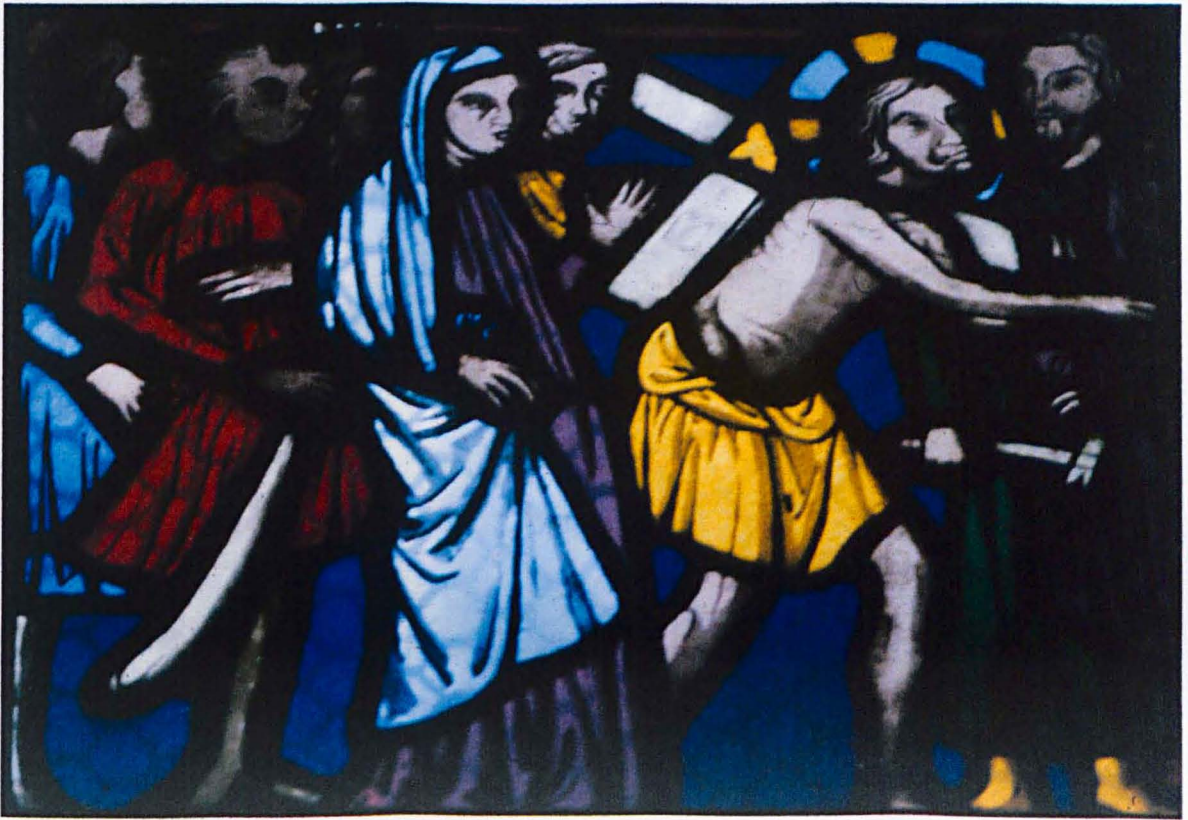
68. Aisle window, Saint Editha, Tamworth. Designed by Henry Holiday and executed by Powell & Sons of Whitefriars, early 1870s. Detail.
69. *Man of Sorrows, Last Supper and Agony in the Garden*, aisle window, Saint John, Princes Street, Edinburgh. Ballantine & Son, 1860.
70. Geometric window, Greyfriars Church, Edinburgh. Ballantine & Allan, 1857.
71. Geometric window, Greyfriars Church, Edinburgh. Ballantine & Allan, 1857. Detail.
72. East window, Greyfriars Church, Edinburgh. Ballantine & Allan, 1857.
73. East window, Greyfriars Church, Edinburgh. Ballantine & Allan, 1857. Detail – *Good Samaritan*.
74. *Good Samaritan*, Julius Schnorr von Carolsfeld, *Die Bibel in Bildern*, (1852-6).
75. East window, Greyfriars Church, Edinburgh. Ballantine & Allan, 1857. Detail – *Wise and Foolish Virgins*. After a painting by James Eckford Lauder (private collection).
76. *King Roderick with Saints Mungo and Columba*, Lower Church, Glasgow Cathedral. Ballantine & Allan, 1857. Diagram of leadlines. (GUL: MS Euing 34).
77. *King Roderick with Saints Mungo and Columba*, Lower Church, Glasgow Cathedral, 1857. Detail.
78. *King Roderick with Saints Mungo and Columba*, Lower Church, Glasgow Cathedral. Ballantine & Allan, 1857. Detail.
79. *Good Samaritan*, window No. 27, Choir, Glasgow Cathedral. Designed by Alexander Strähuber and executed by *Königliche Glasmalereianstalt* of Munich, 1861. Detail. Removed.
80. *I will make you Fishers of Men*, Sailors' Gallery, Old West Kirk, Greenock. Ballantine & Son, c.1864.



81. *Miraculous Draft of Fishes*, cartoon for a tapestry. Raphael, 1515. (London: Victoria and Albert Museum).
82. *Adoration of the Magi*, Farmers' Gallery, Old West Kirk, Greenock. Ballantine & Son, c.1864.
83. *Adoration of the Magi*, Albrecht Durer, 1504. (Florence: Uffizi).
84. *I will make you Fishers of Men*, Sailors' Gallery, Old West Kirk, Greenock. Ballantine & Son, c.1864. Detail.
85. *Nativity*, Farmers' Gallery, Old West Kirk, Greenock. Ballantine & Son, c.1864. Detail.
86. Gallery window, Dowanhill Church, Glasgow. Daniel Cotter, 1867. Detail – *Miriam*.
87. *Christ and the Woman of Samaria*, Lower Church, Glasgow Cathedral. Pompeo Bertini, 1862. Removed.
88. Gallery window, Dowanhill Church, Glasgow. Daniel Cotter, 1867. Detail – *King David*.
89. *Faith*, Old West Kirk, Greenock. Designed by Edward Burne Jones for Morris, Marshall, Faulkner & Company, 1867.
90. *Venus*, Lilybank Gardens, Glasgow. Stephen Adam, c.1876. (University of Glasgow).
91. *Good Samaritan*, New Kilpatrick Church, Bearsden. Charles Gow, c.1887.
92. *Good Samaritan*, New Kilpatrick Church, Bearsden. Charles Gow, c.1887. Detail.
93. *Jacob*, window No.5, nave, Glasgow Cathedral. Designed by E. Siebertz and executed by the *Königliche Glasmalereianstalt* of Munich. Detail – *The dream and promise*.

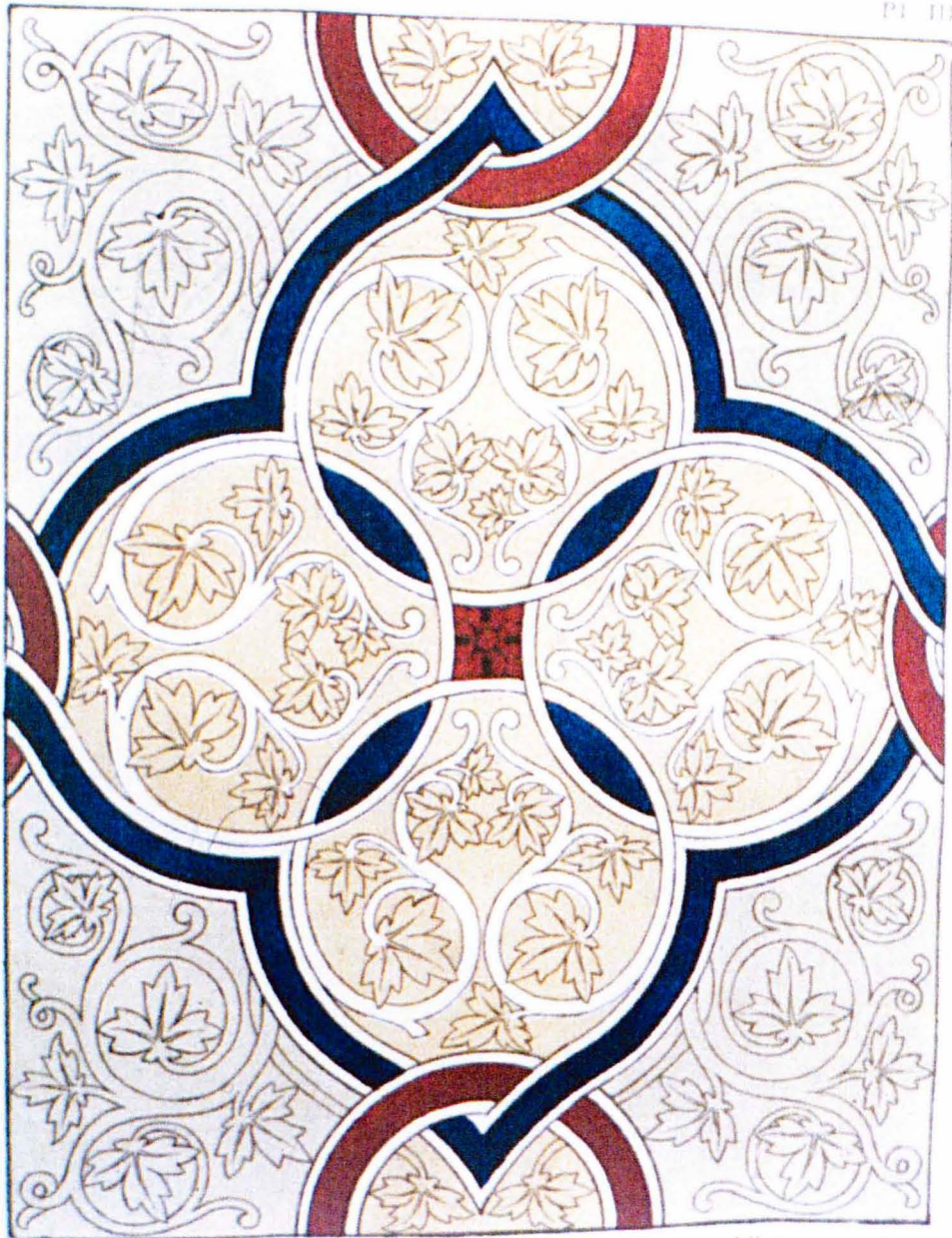












*F. Scheruk. Lith. "Eden."*

*J. H. Carter del.*

DECORATED







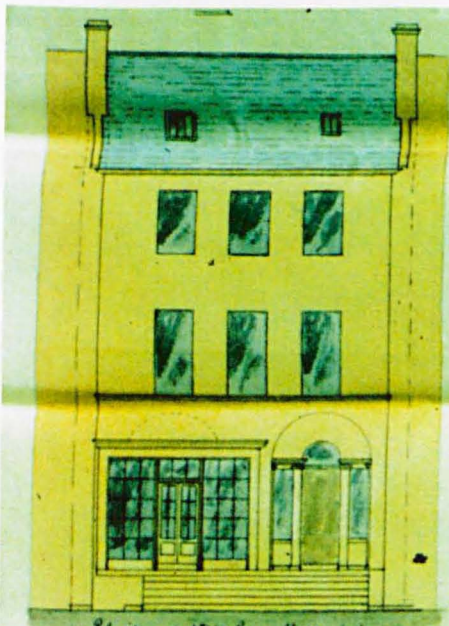
Edinburgh 6<sup>th</sup> Septem<sup>r</sup>  
1844

We herewith enclose the plan  
shown to you

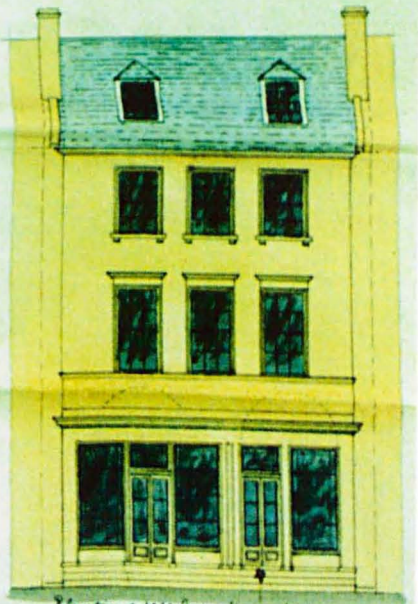
of the  
of the  
of the  
of the  
of the  
of the

To the  
of the

John G. Walker

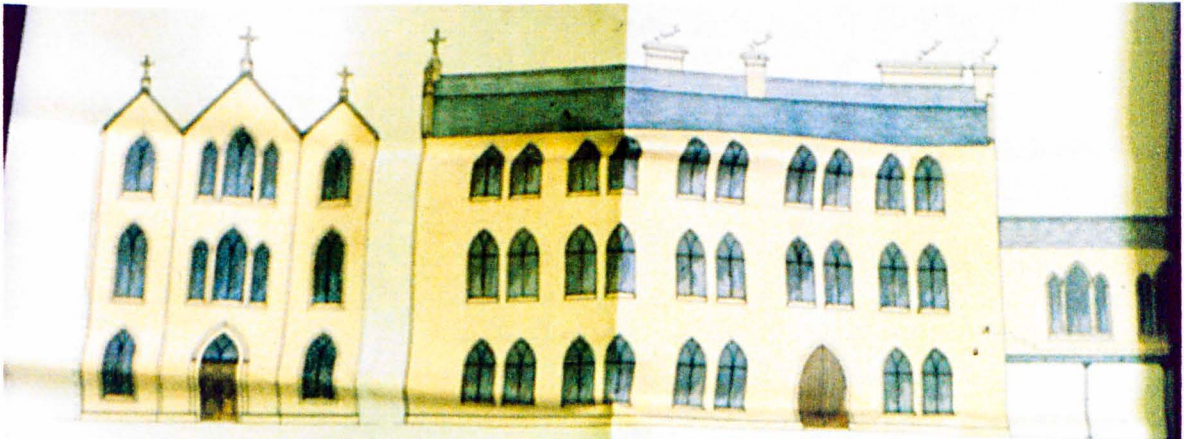


Elevation of the George Street as it is

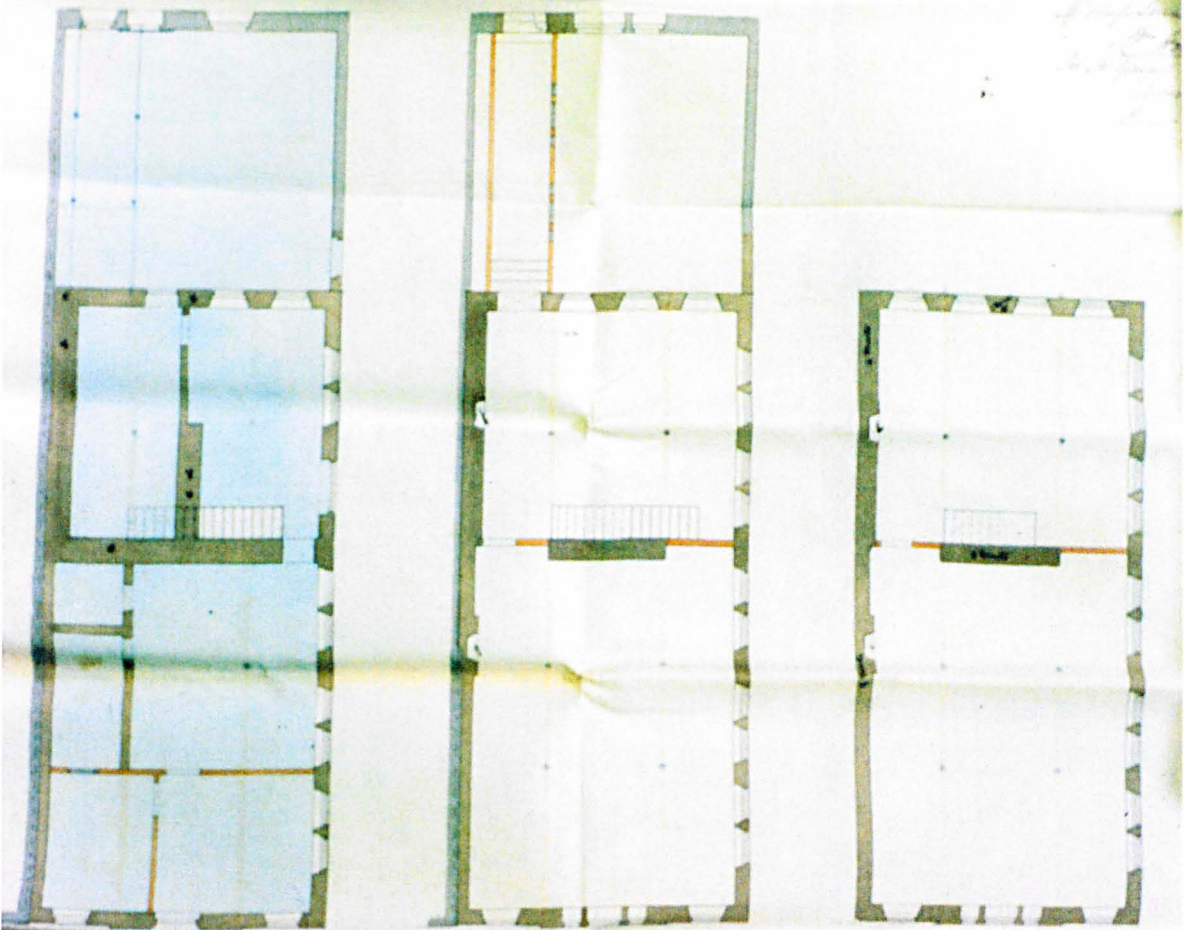


Elevation of the George Street as proposed  
to be altered

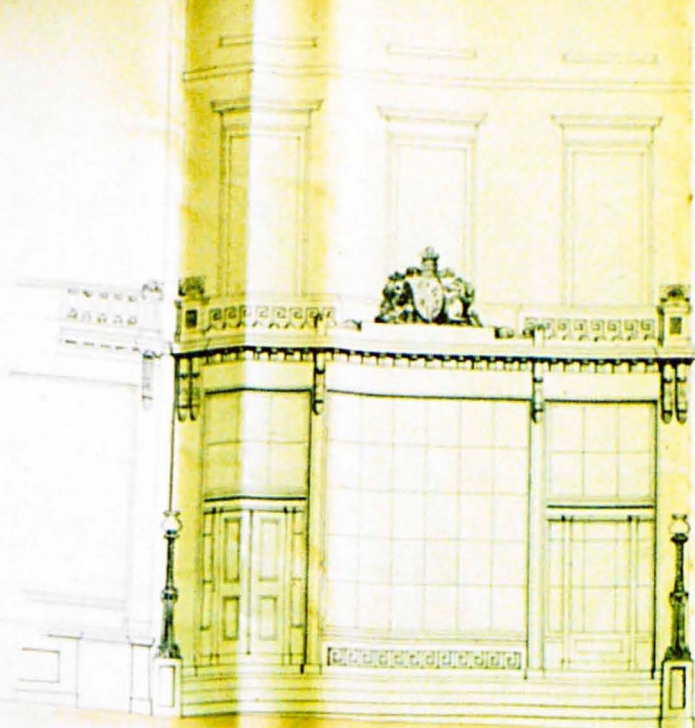
1 2 3 4 5 6 Feet



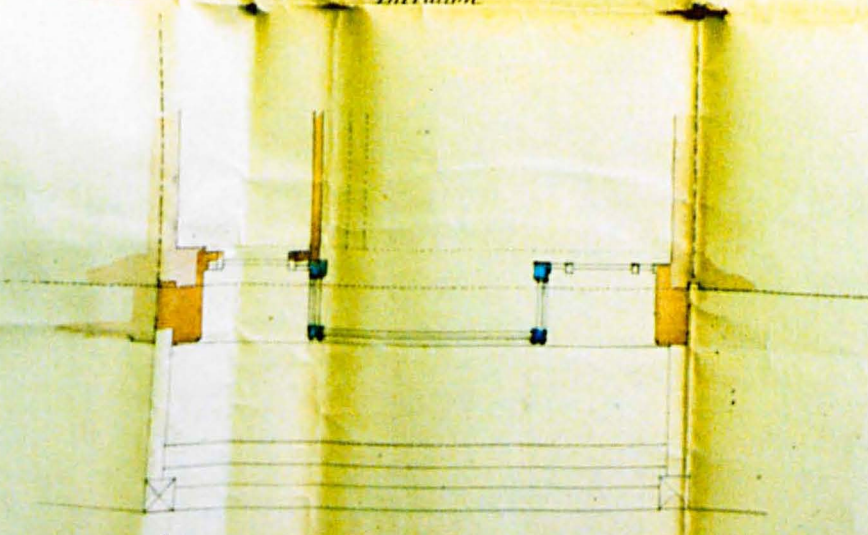
*Handwritten notes in cursive script, partially legible. The text appears to be a description or list of architectural details, possibly including measurements and material specifications.*



*Proposed Alterations  
on House No 18, Picardy Place -*



*Elevation*

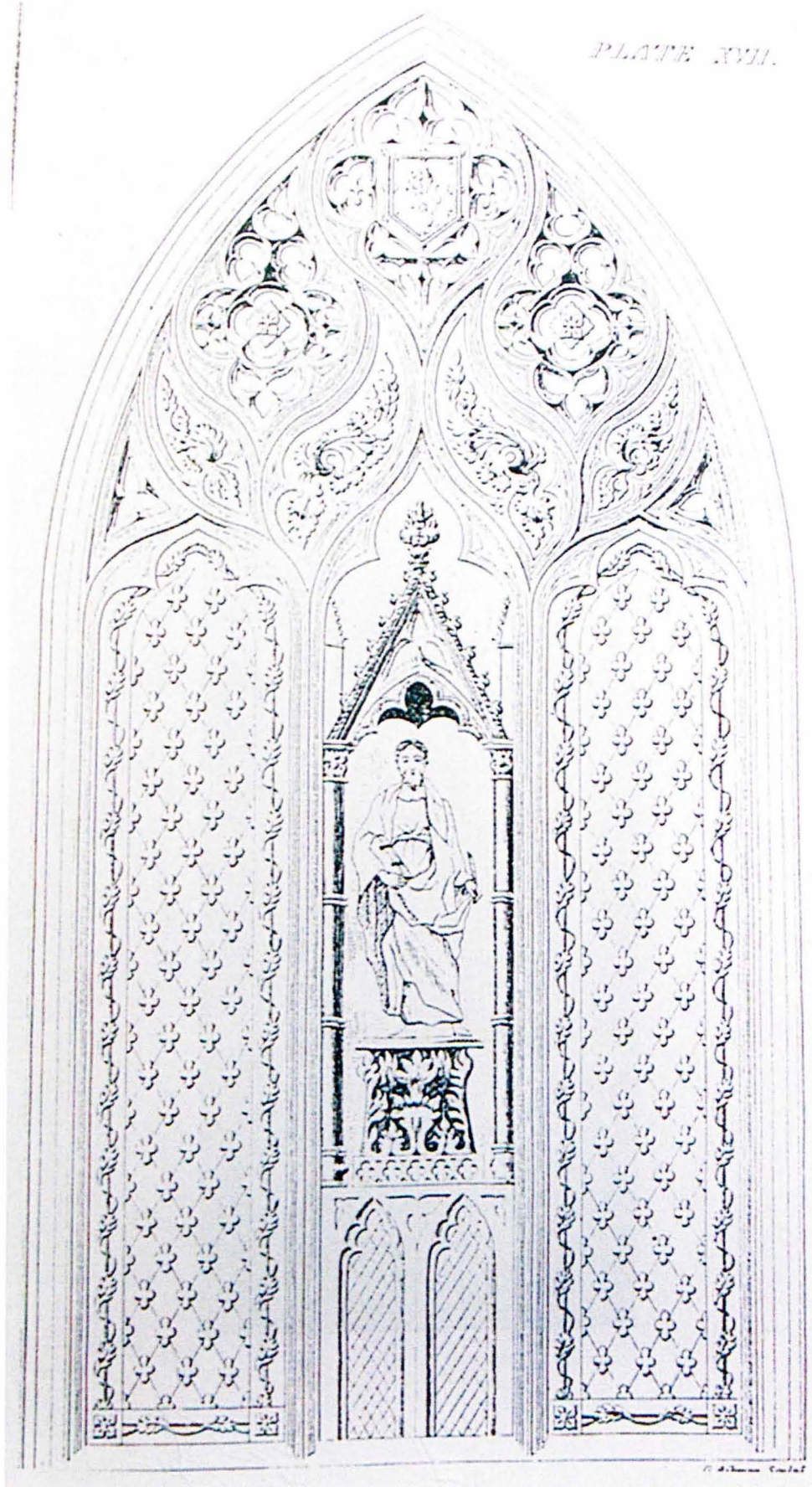


*Plan*

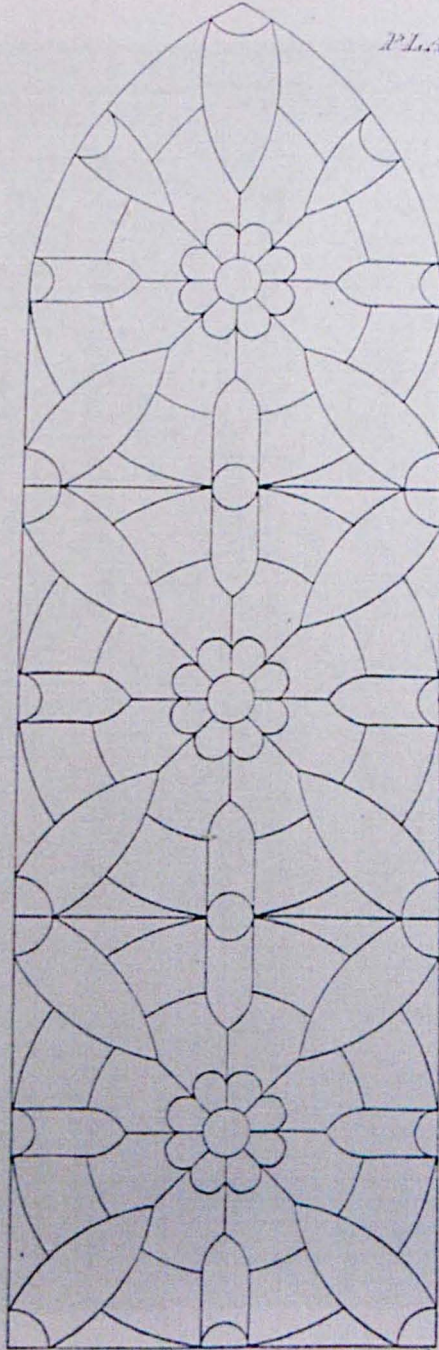
27 feet

*as Proprietor of 18 Picardy Place I consent to this Plan being printed  
17 July 1835*

*J. G. G. G.*

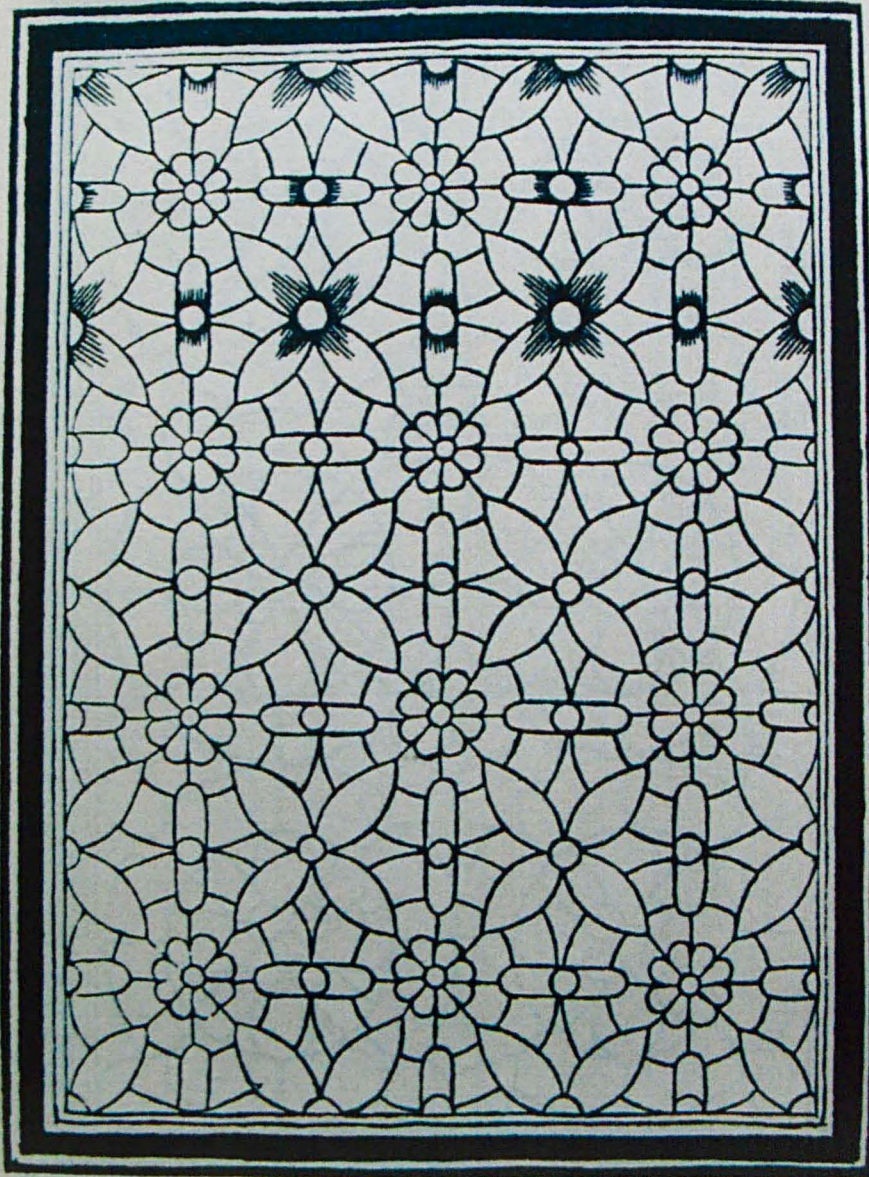


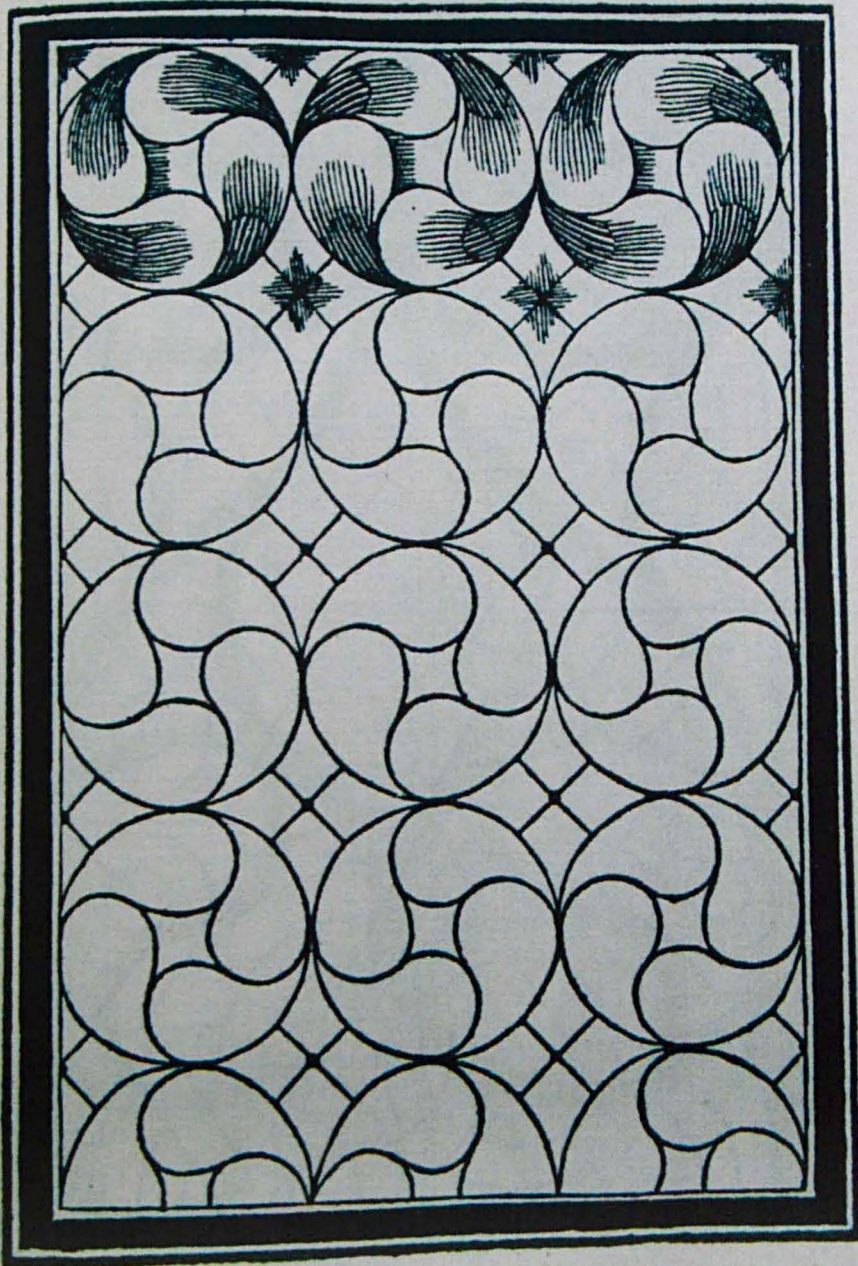
PLATE



*W. Cooper, Edin' del'*

*G. Dickman, sculp'*





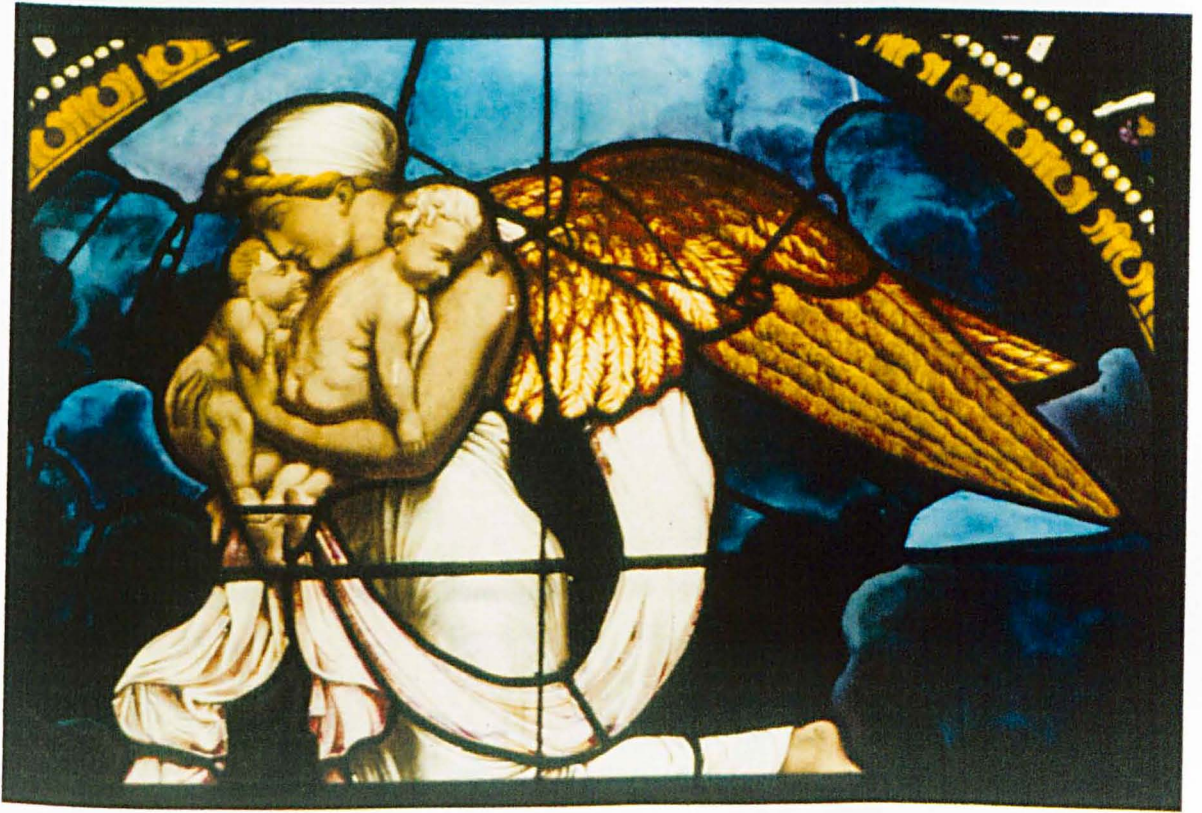










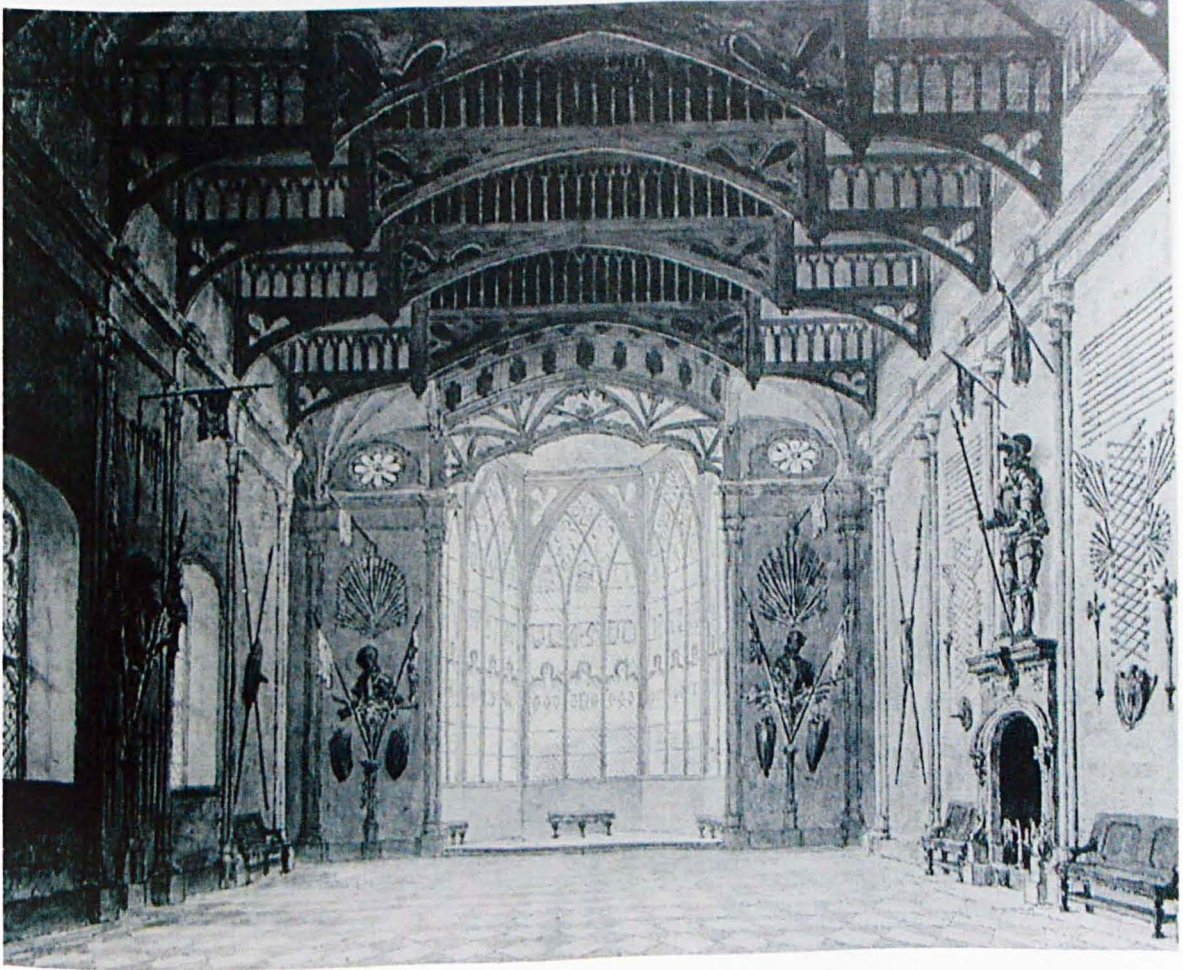








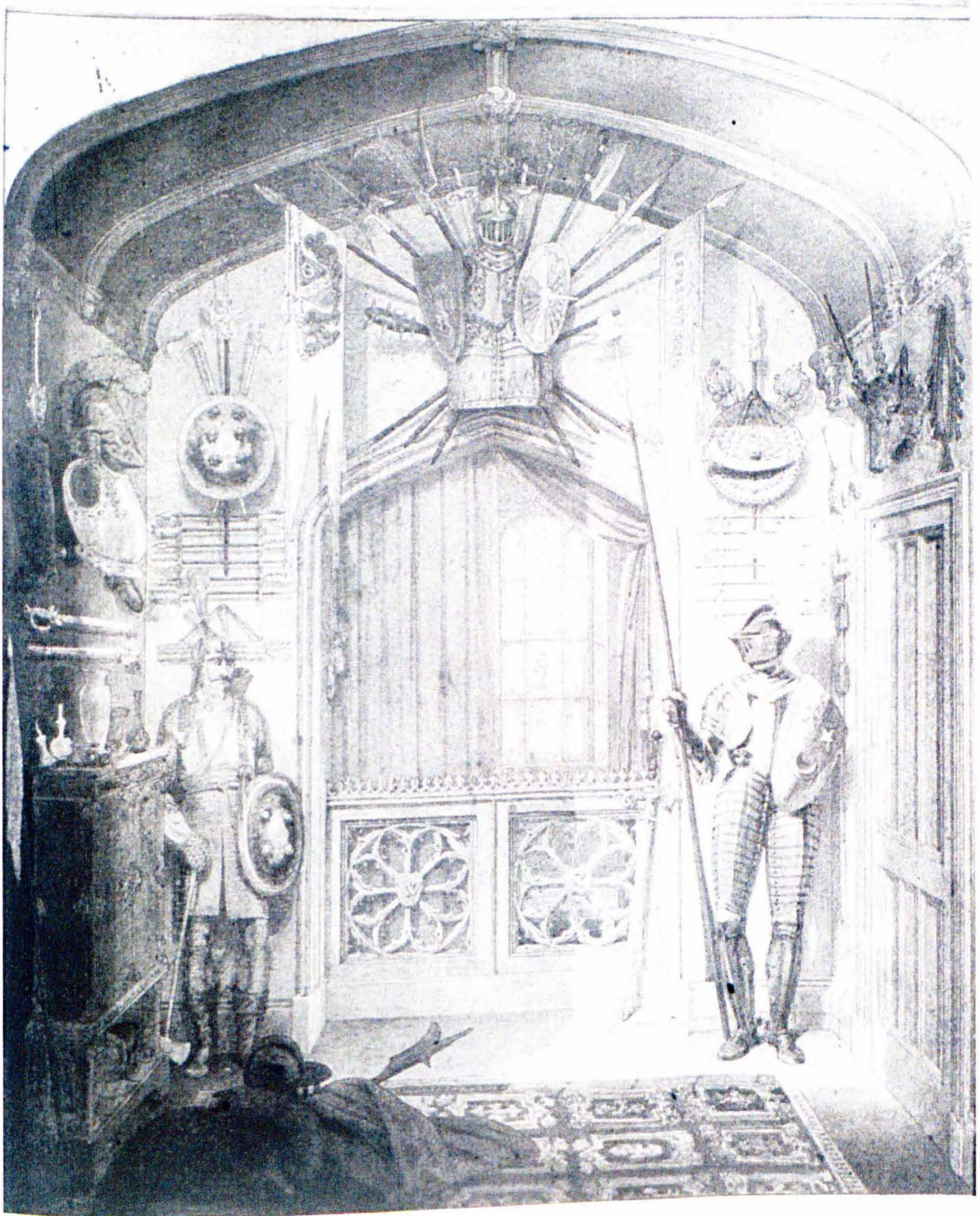




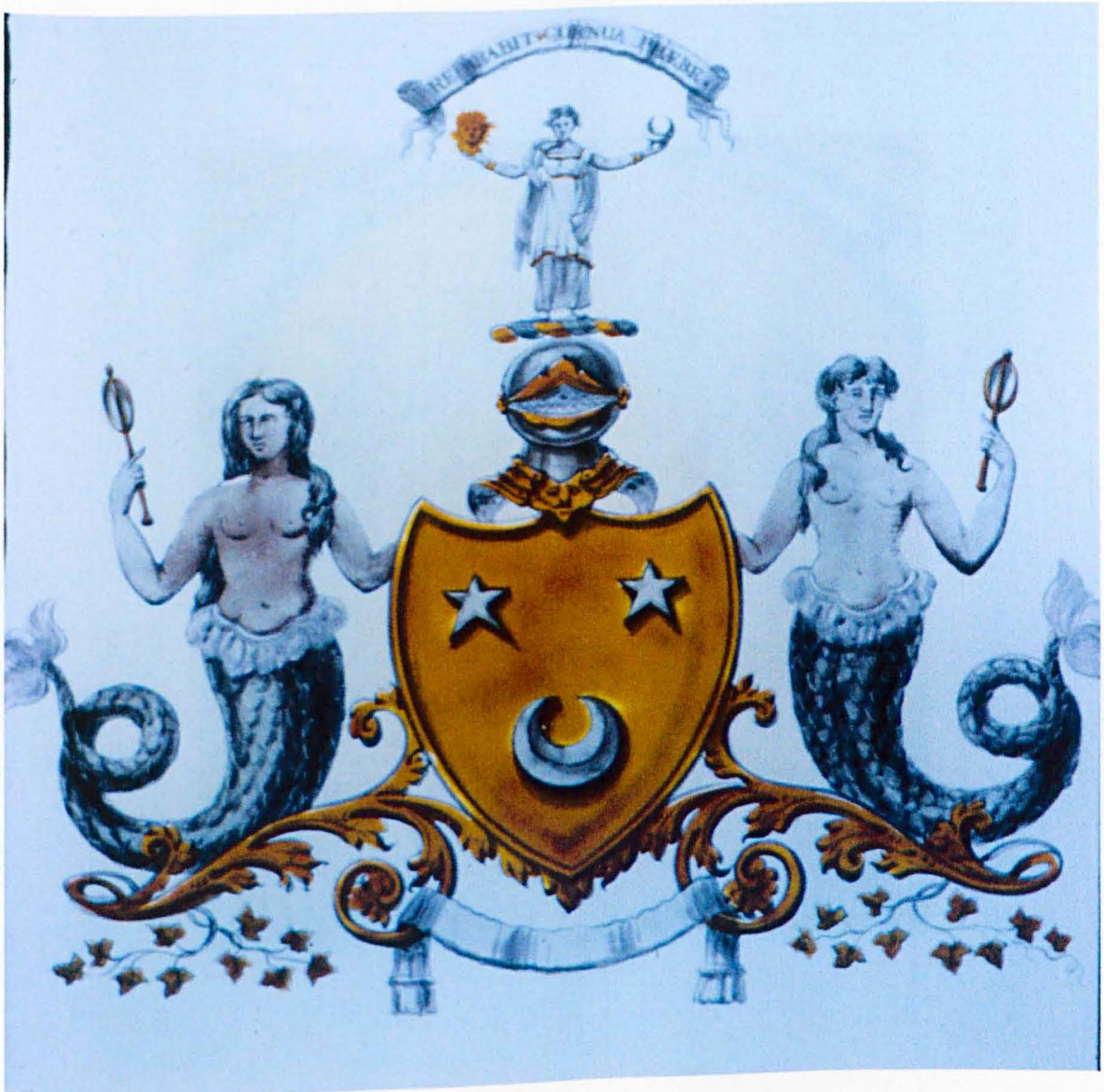












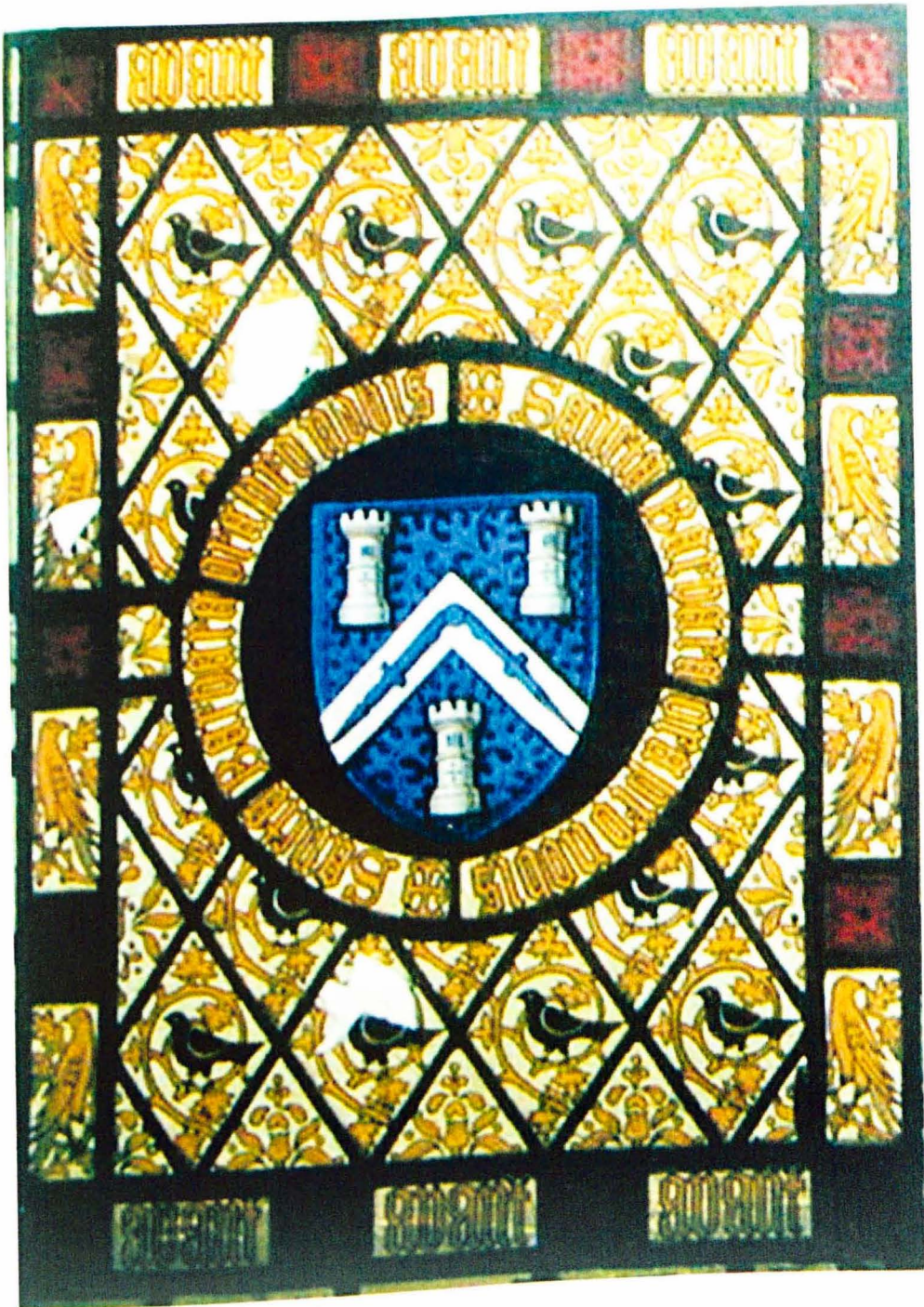
















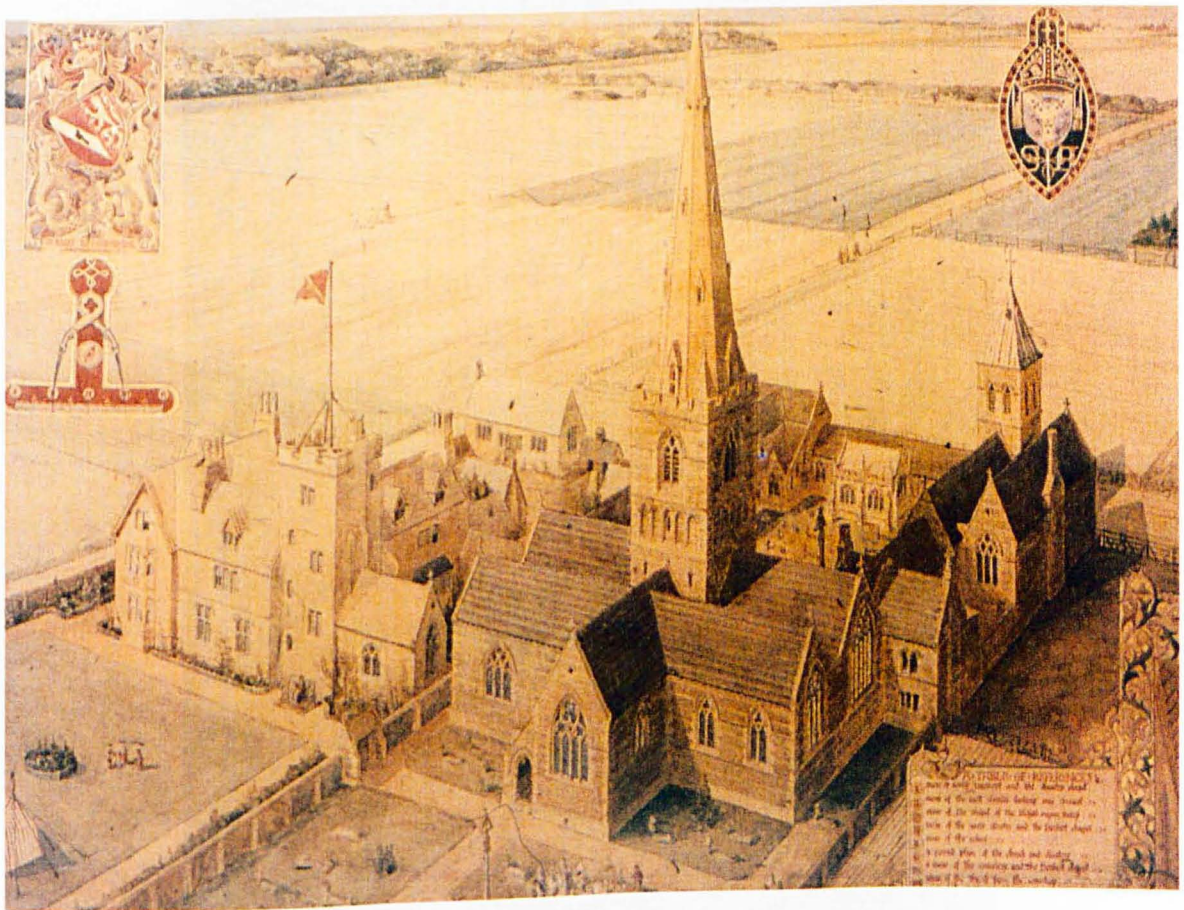














**S. Edmund**





















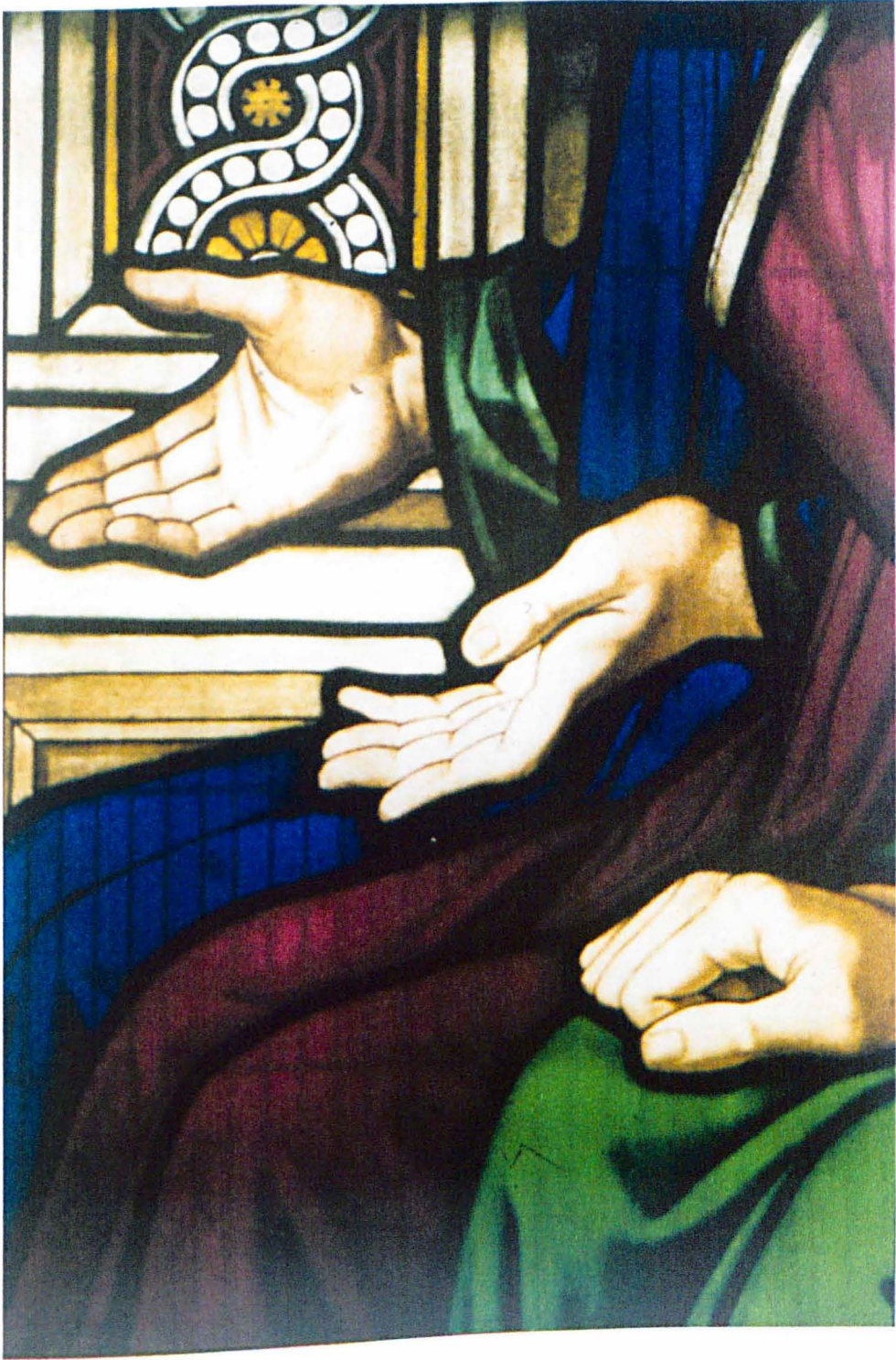


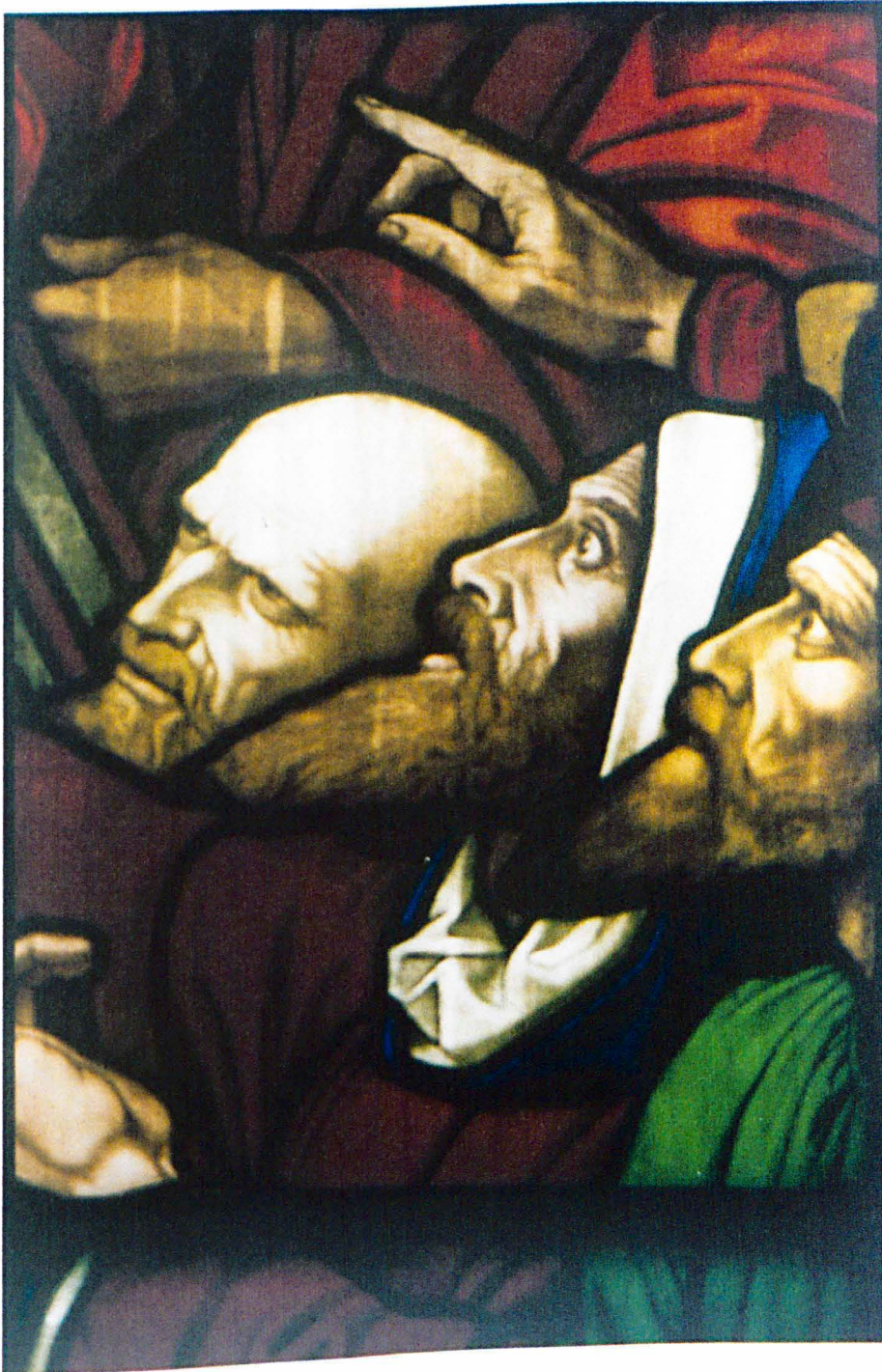


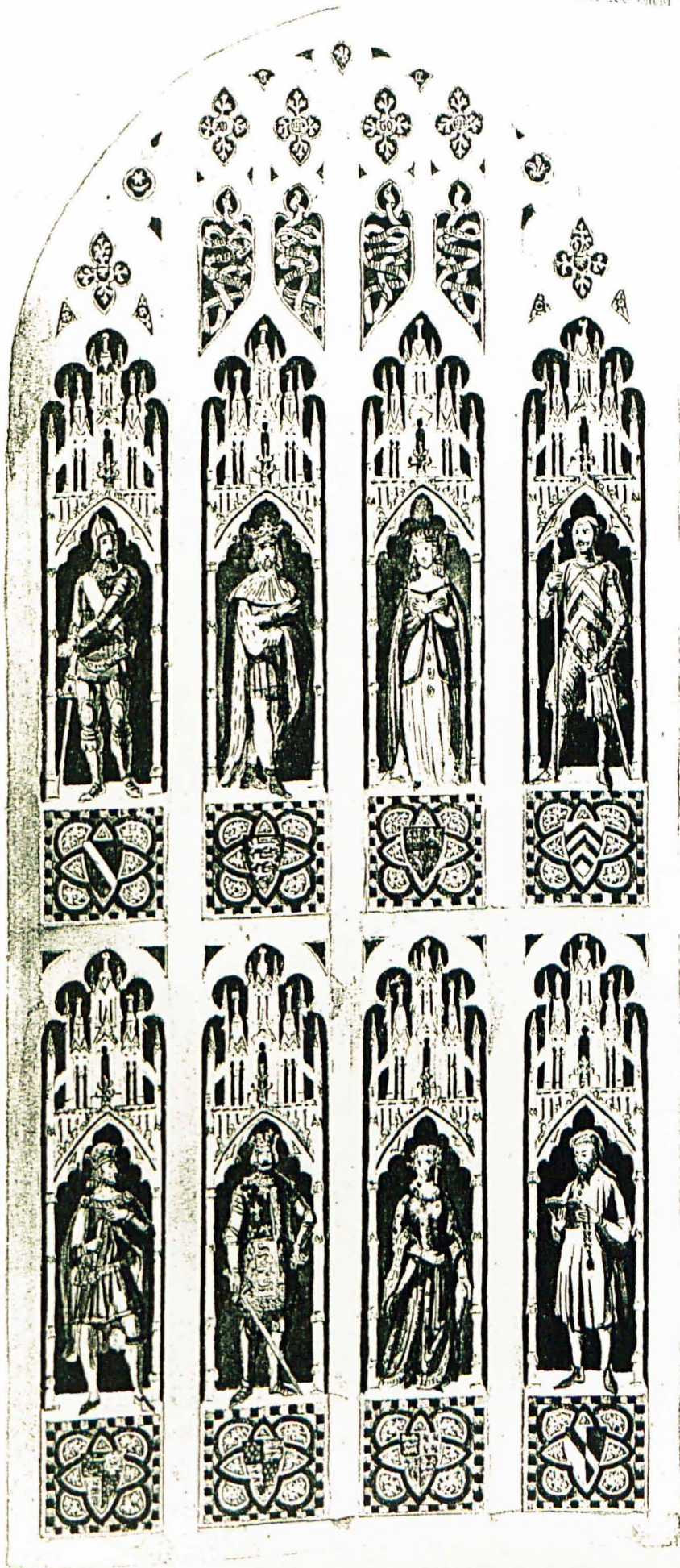












WINDOW No. 5.

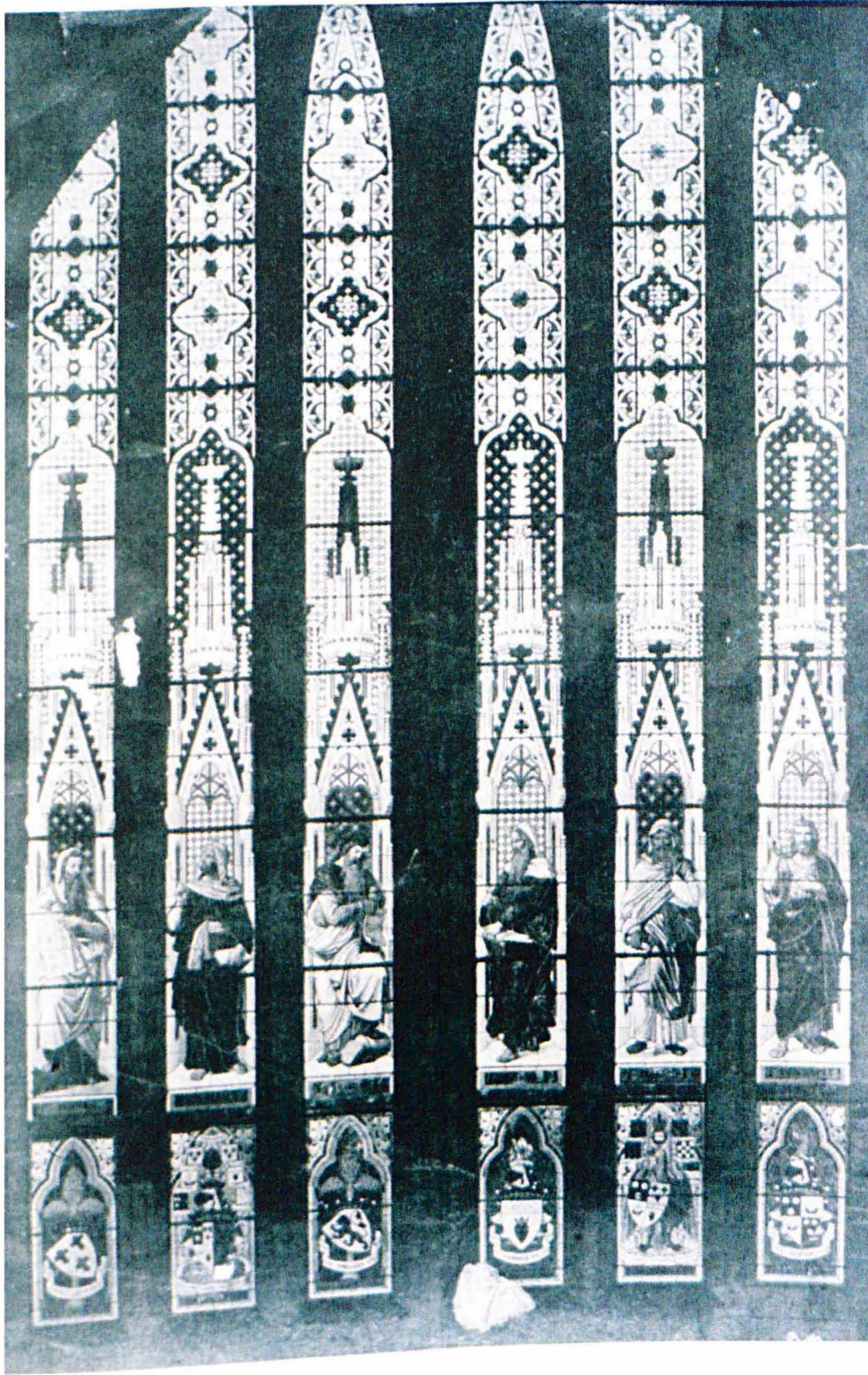


HENRY LORD BEAUMONT.  
*from the east window of*  
ST PETERS, BARTON UPON HUMBER.

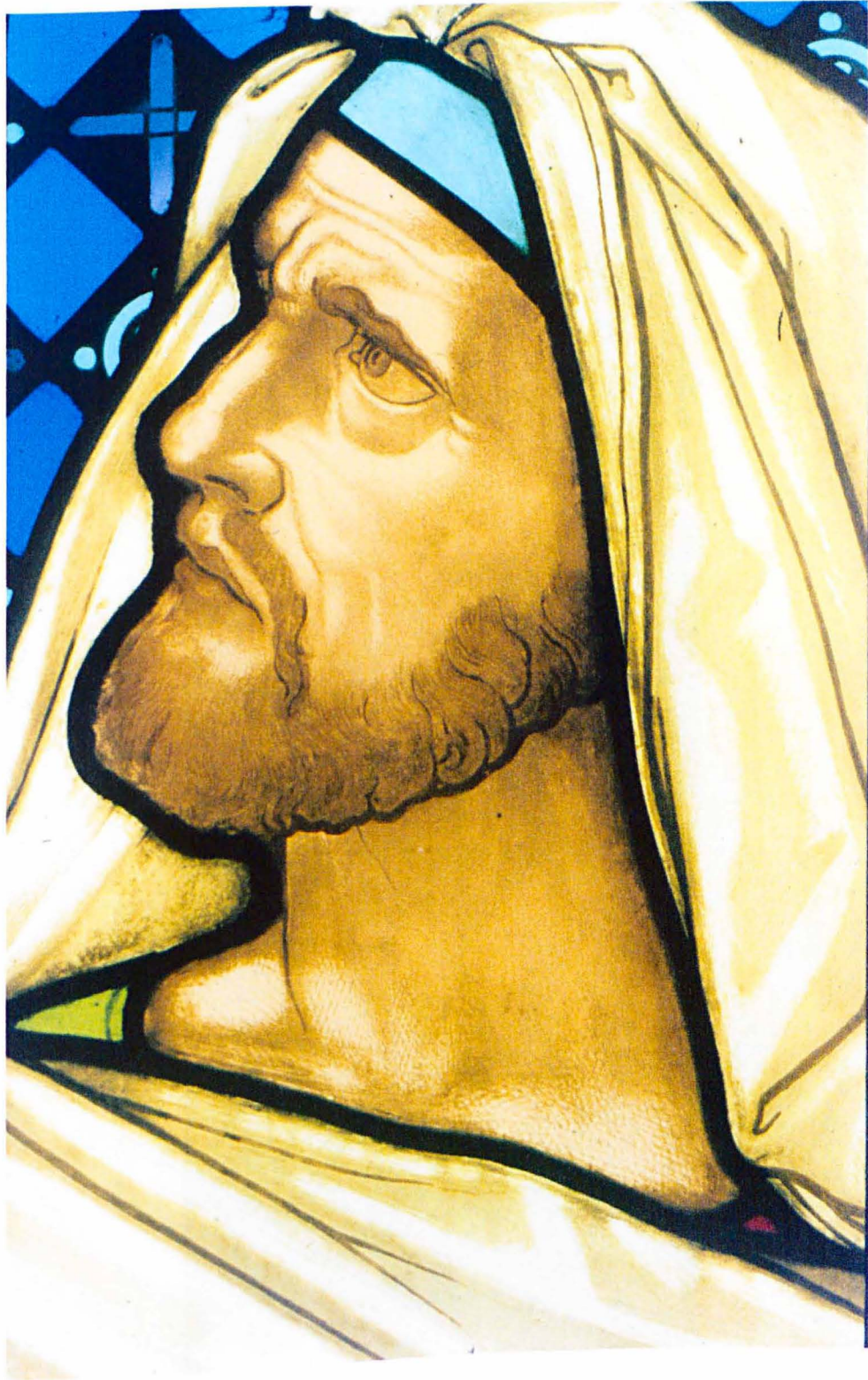
*W. G. ...*







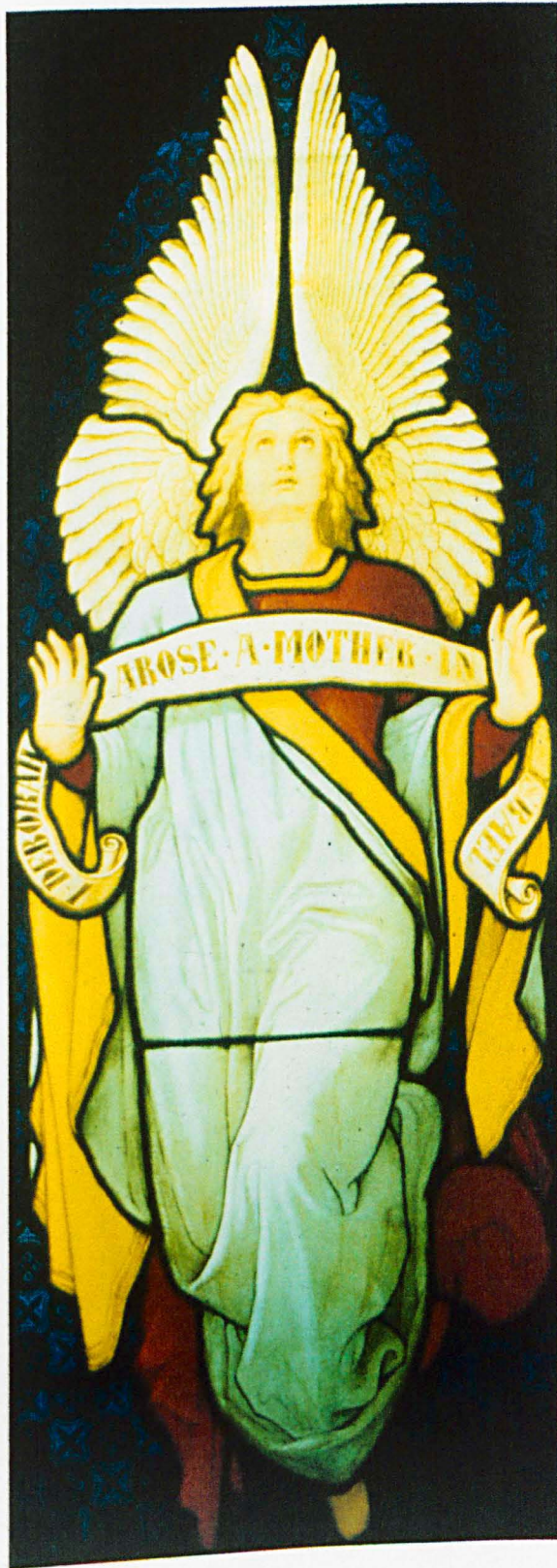












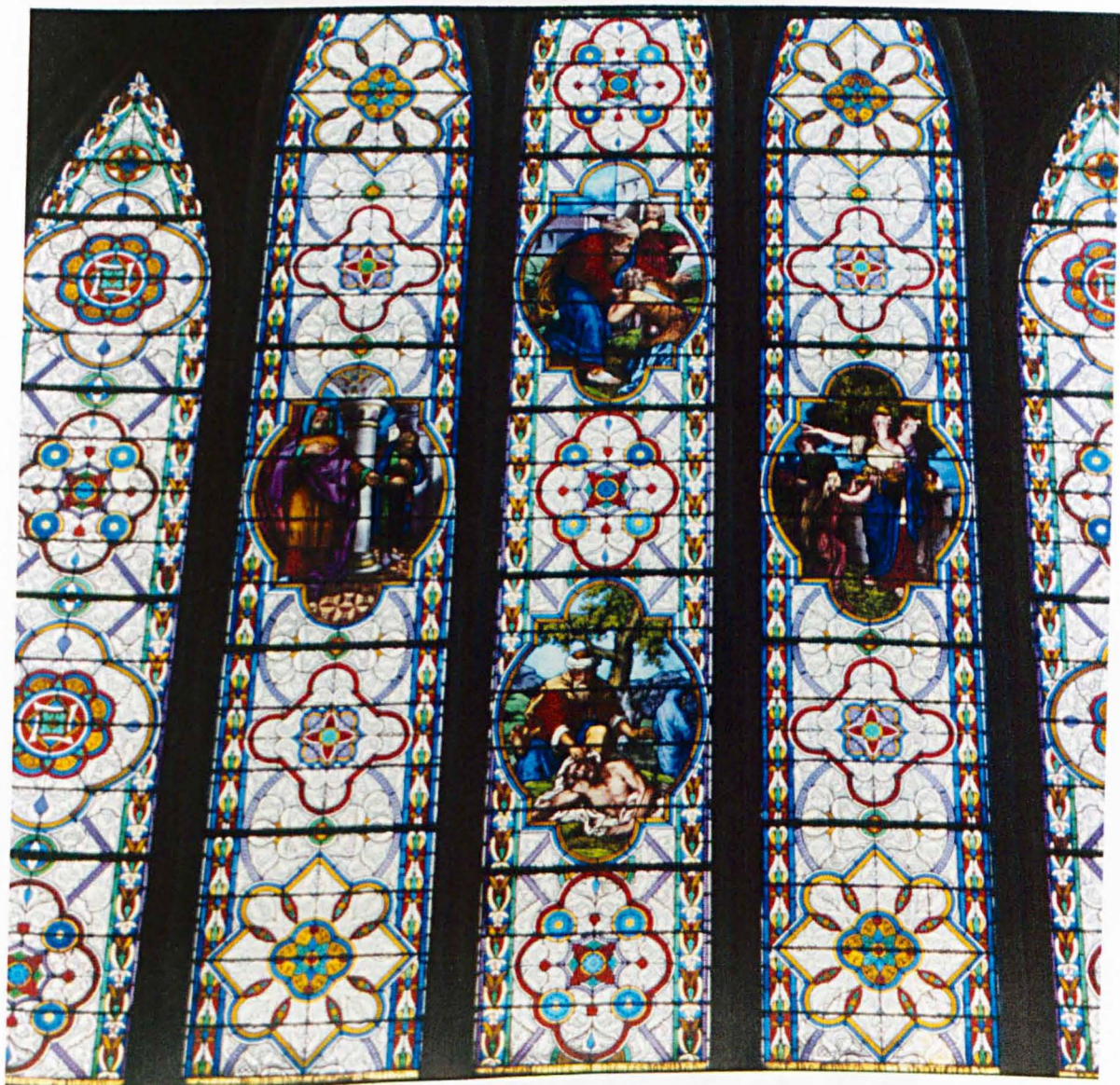
















THE GOOD SAMARITAN.



