

The Molendinar Burn project asks the question today in 2015 - What does progress mean today? Across ten individual places and communities along the diverse route of the Molendinar Burn.



Molendinar Burn Project

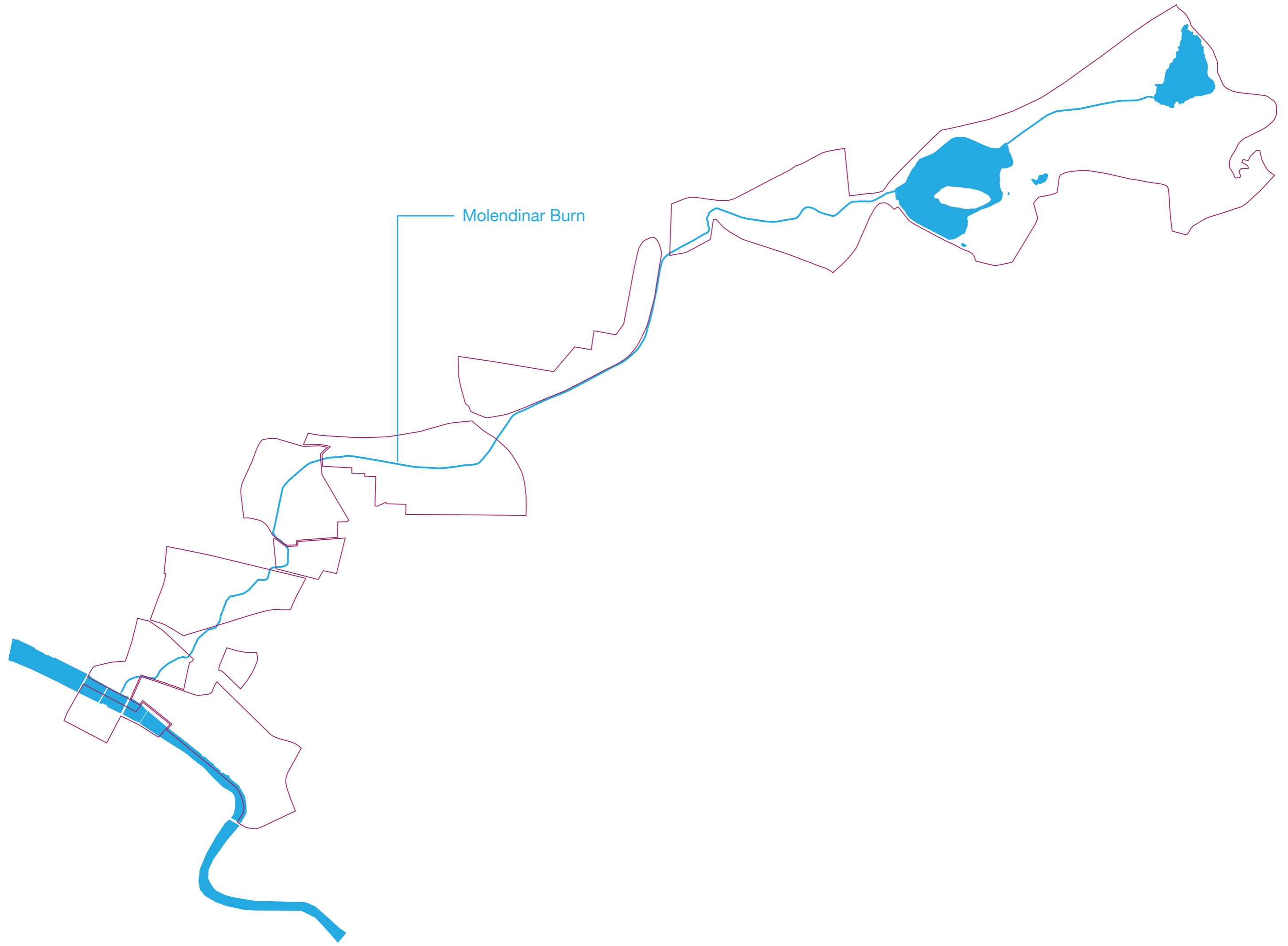
2015



Fish

M8


WITNESSES



Molendinar Burn

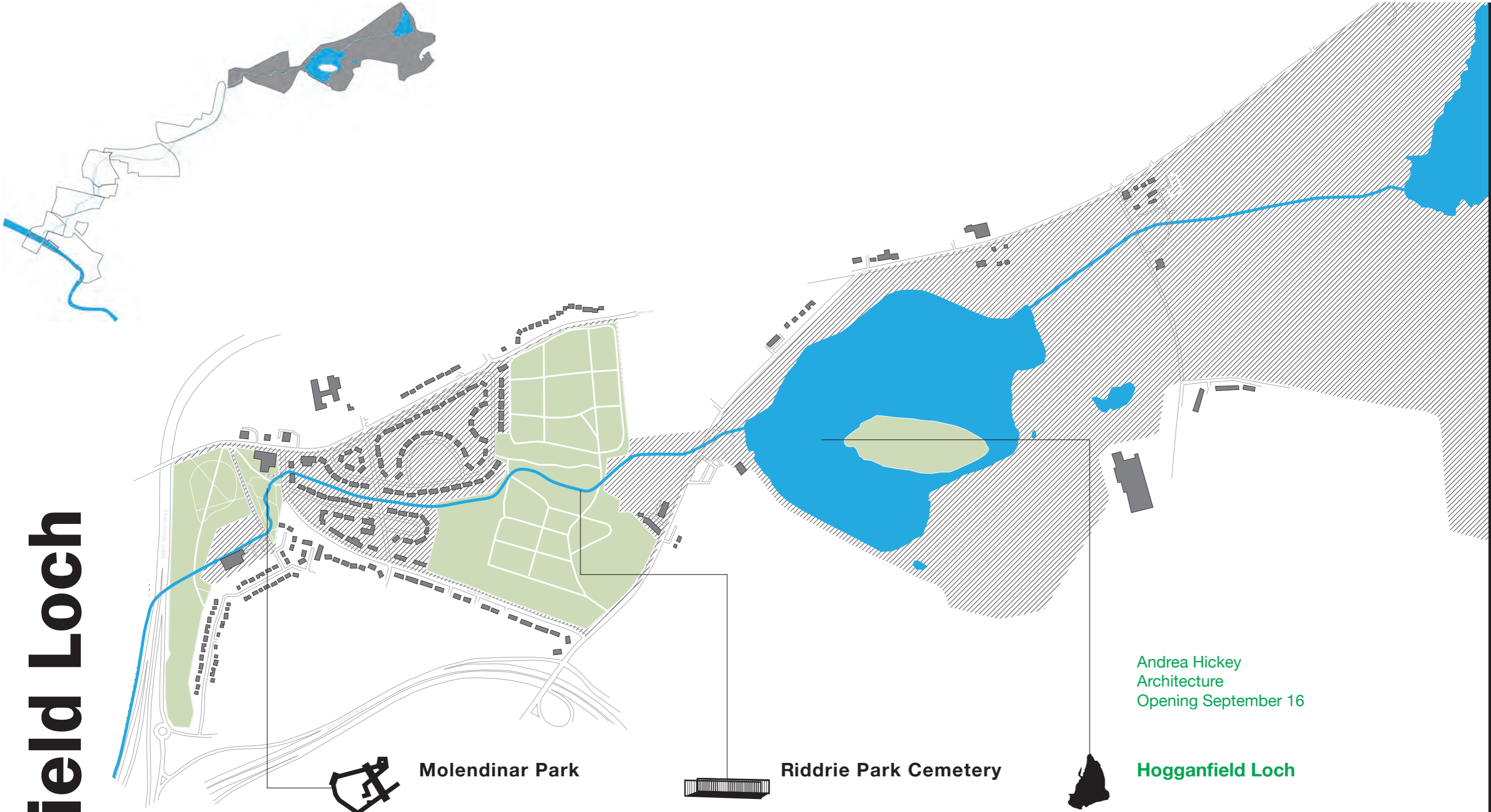


Frankfield Loch

No. 1 From time immemorial down to the termination of the last Leases of the Mills in dispute, the Water was drawn from the Loch  for the supply of the Mills through the eye of the old upper Millstone, laid in a horizontal position in the bottom of the front of the Dam. A conical wooden Plug, raised and lowered by a vertical Wooden Rod or Spear, served as a Sluice shut the Eye of the Millstone when no more Water was required. - Glasgow Ancient and Modern



Frankfield Loch



Andrea Hickey
Architecture
Opening September 16

Molendinar Park

Riddrie Park Cemetery

Hogganfield Loch

Source, Residential, Community, 1960's, Regeneration, Brownfield, Water, Countryside

Provan Hill

No. 2 'We could possibly get localised fish life **Fish** and

improved bird life. When a body of water has been

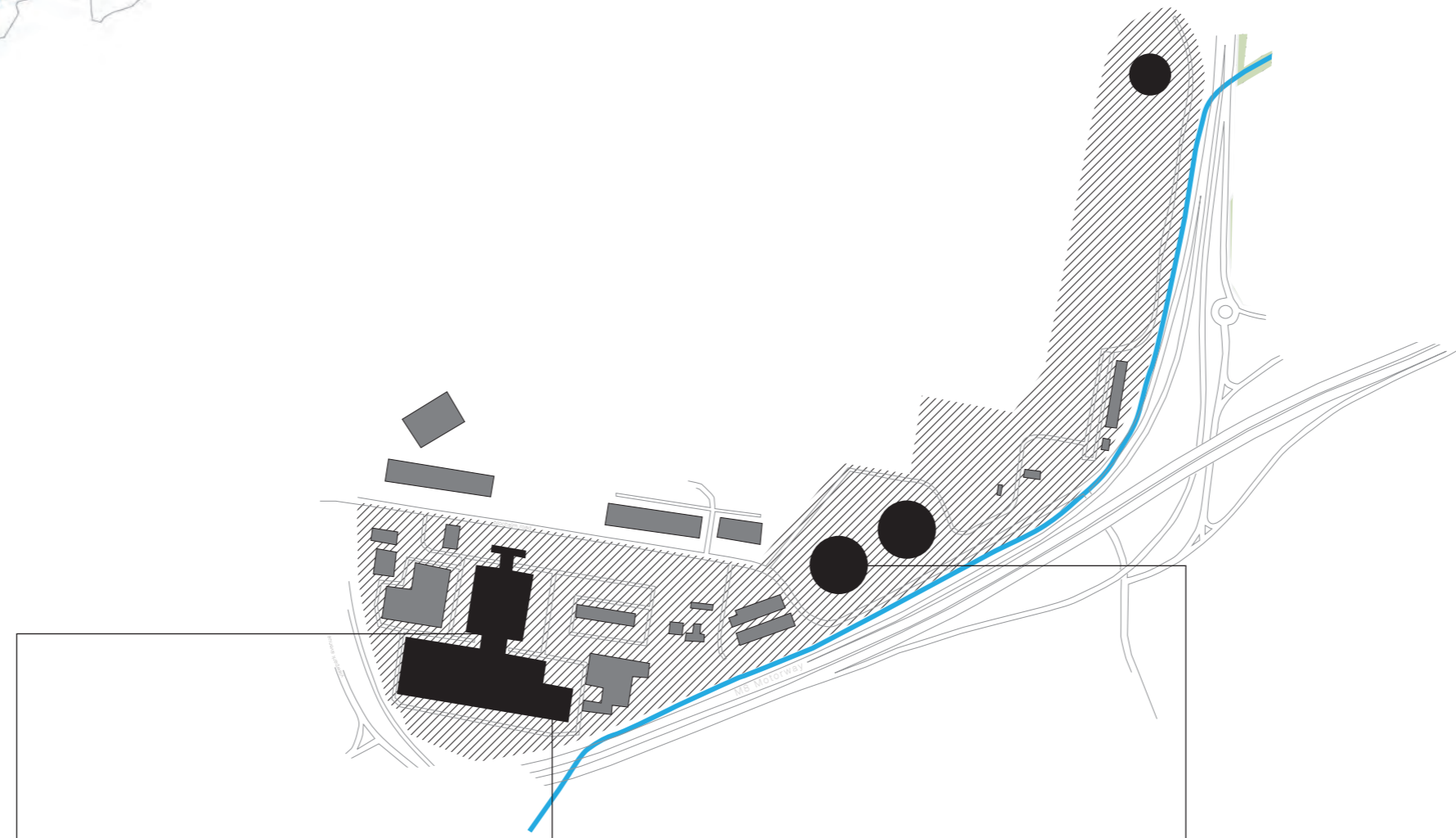
heavily modified there will be lesser targets. We will

never achieve the good status of the Water

Framework Directive'. - George Rattray from [SEPA 2002](#)



Provan Hill



Fruit Market

Fish

Fish Market



Gas Works

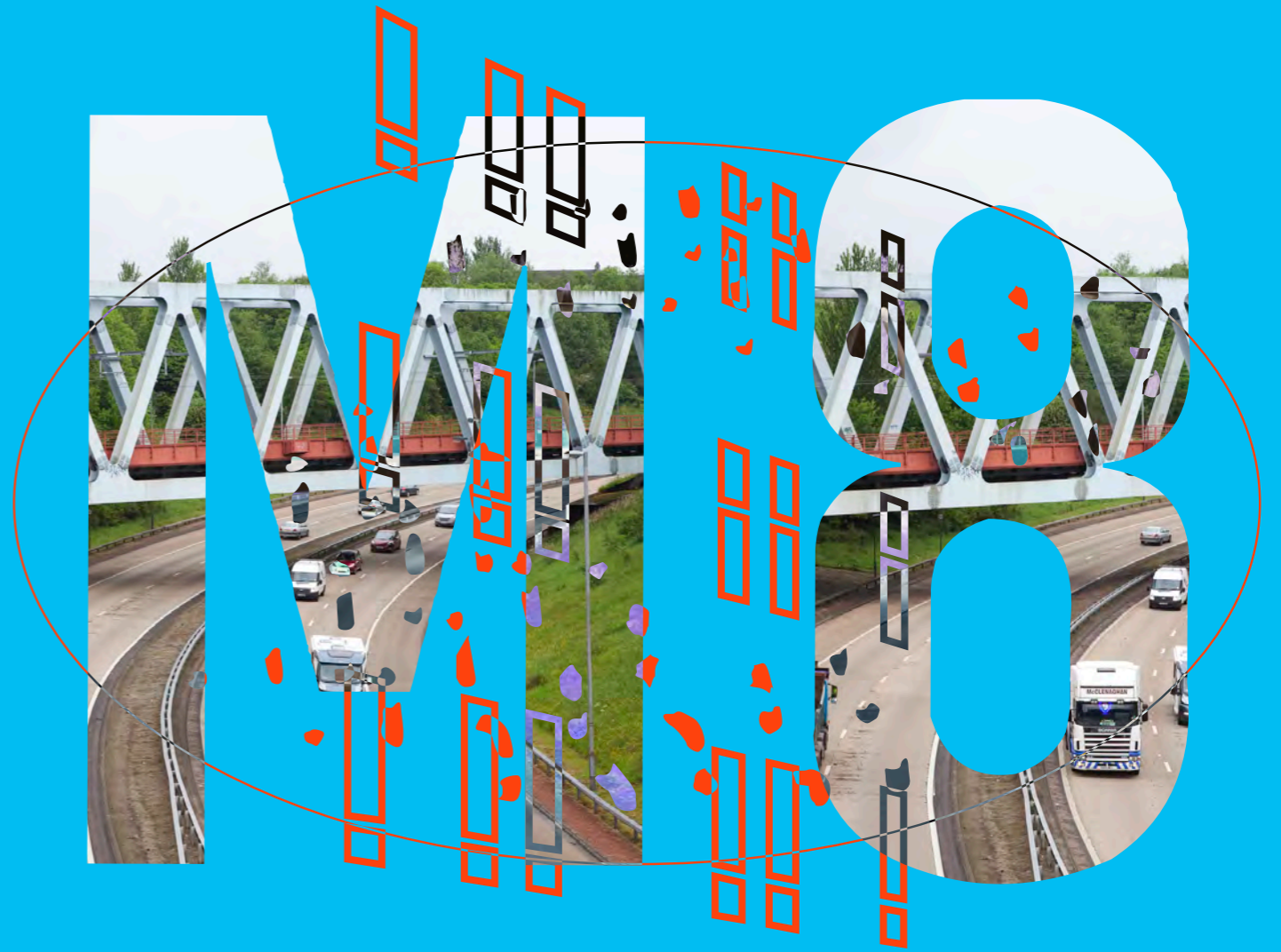
Alasdair Gray
Painting
Open Tue-Sat 4.30am to 7.00am



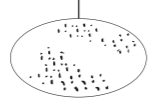
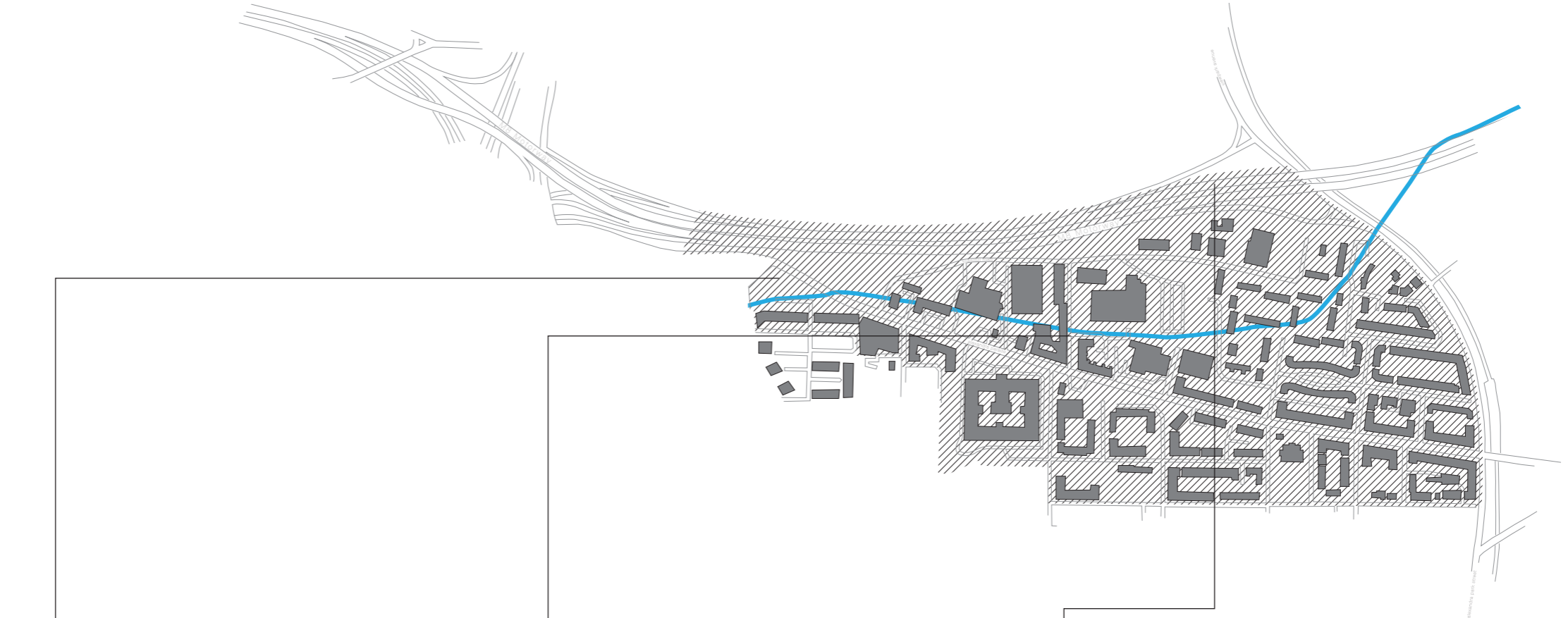
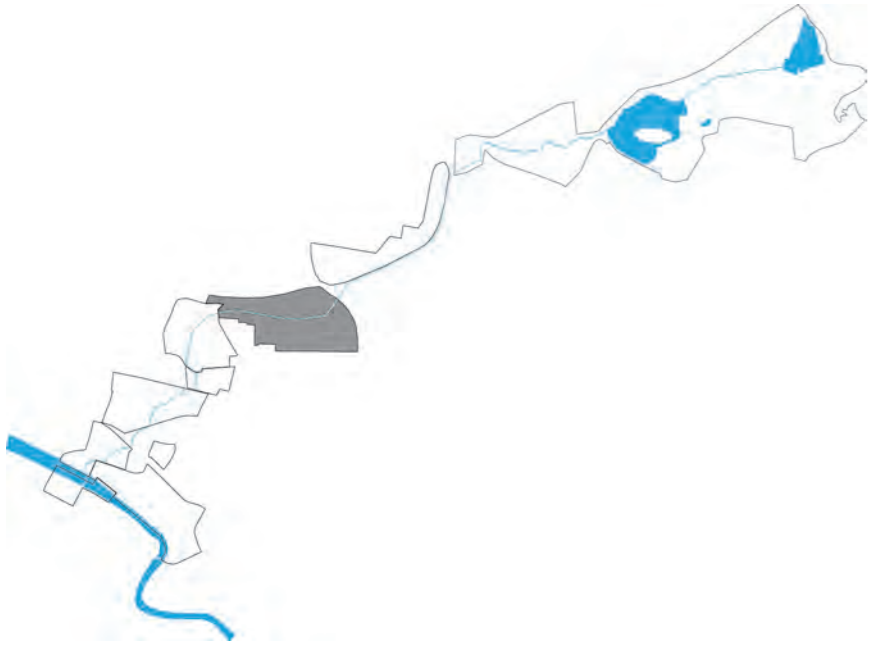
M8 Motorway

No. 3 The approach taken by Amey Highways, responsible for much of the road network in the UK, including the **M8** motorway that runs across the Molendinar, separating Blackhill and Blochairn from the old medieval centre. No doubt in the 1970's, when the motorway was being built, engineers managing the project took this heritage into consideration. However, when Amey Highways were asked to comment in 2002, they responded as follows:

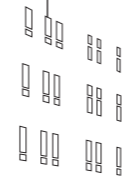
'We don't have any historical knowledge whatsoever – five to six years max' - Drummond G. Amey. [Highways](#).



M8 Motorway



Manhole



Alexandra Parade



M8

M8 Motorway



Jeremy Deller
Billboard
Exhibiting September 16

No. 4 The traditional view is that St. Kentigern or Mungo

founded a monastery  on the banks of the

Molendinar Burn, three quarters of a mile north of the

ford over the Clyde, on land formerly consecrated by

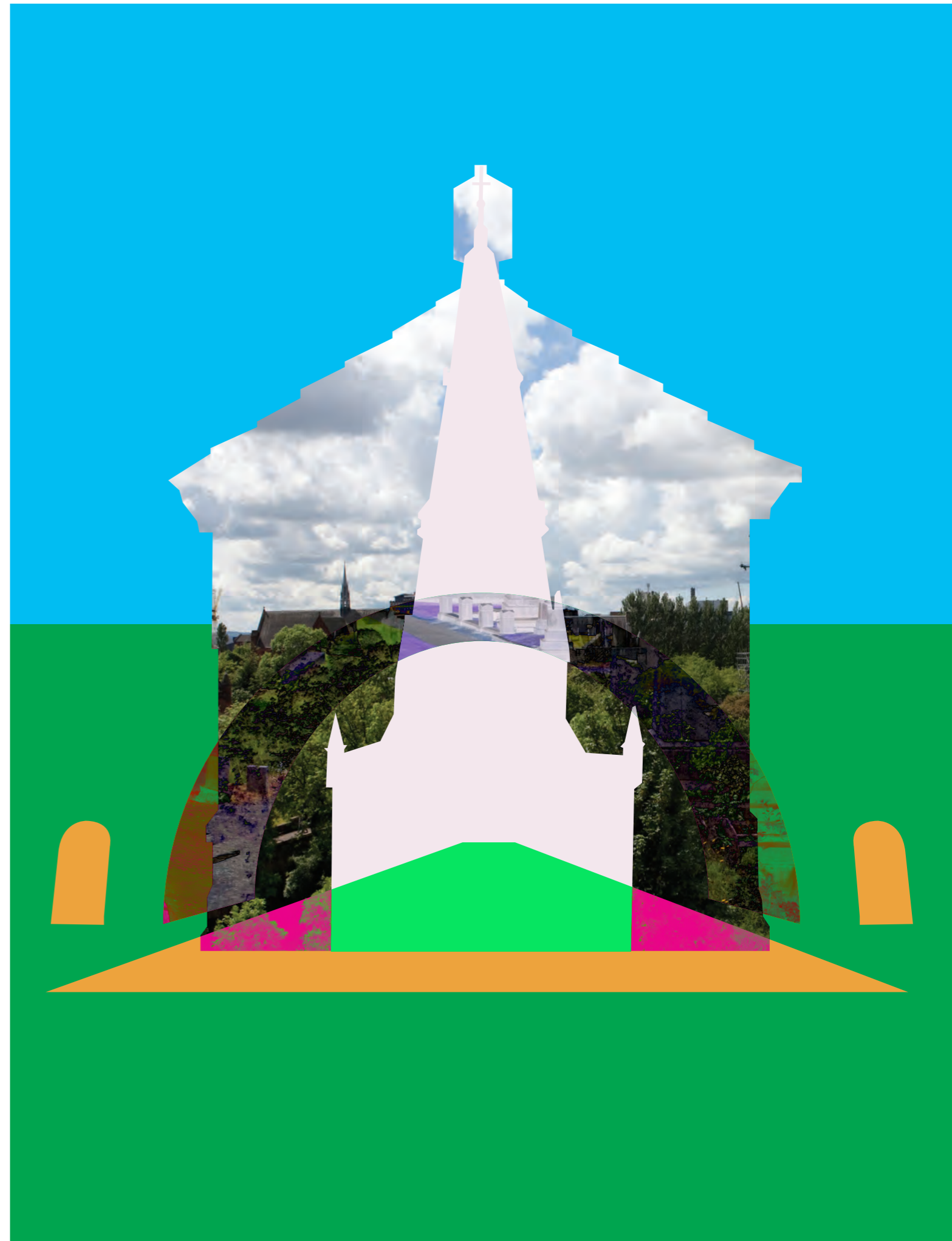
St. Ninian as a burial ground.  This soon became

the seat of a bishopric, a place of pilgrimage and

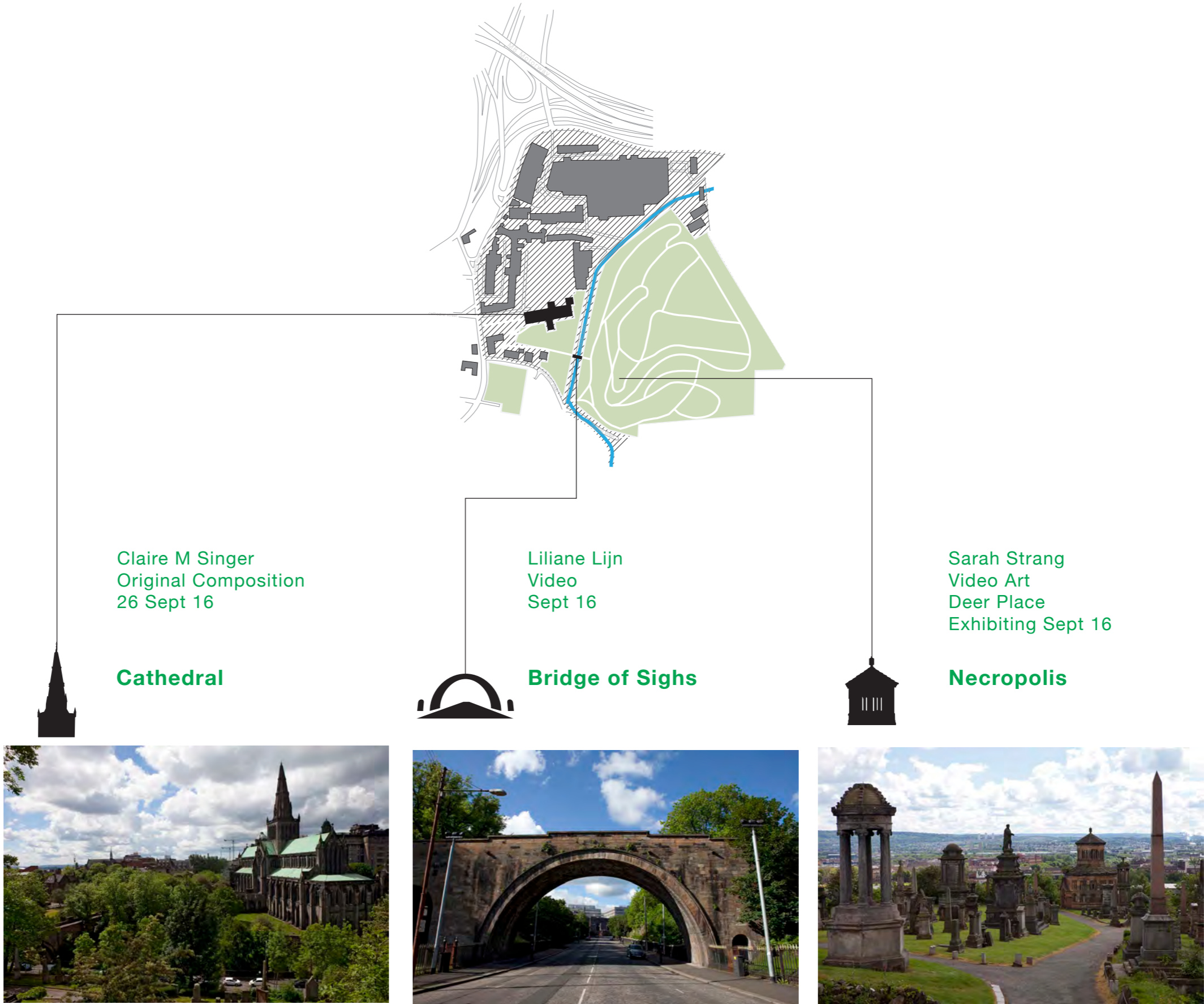
hence a settlement. - Glasgow Volume 1: Beginnings to

1830. Manchester University Press. Manchester. (1996).

p. 18.



Cathedral/Necropolis



Tennents Brewery

No. 5 Robert Luke, Luke family an old Glasgow

family (goldsmiths for generations and owned land

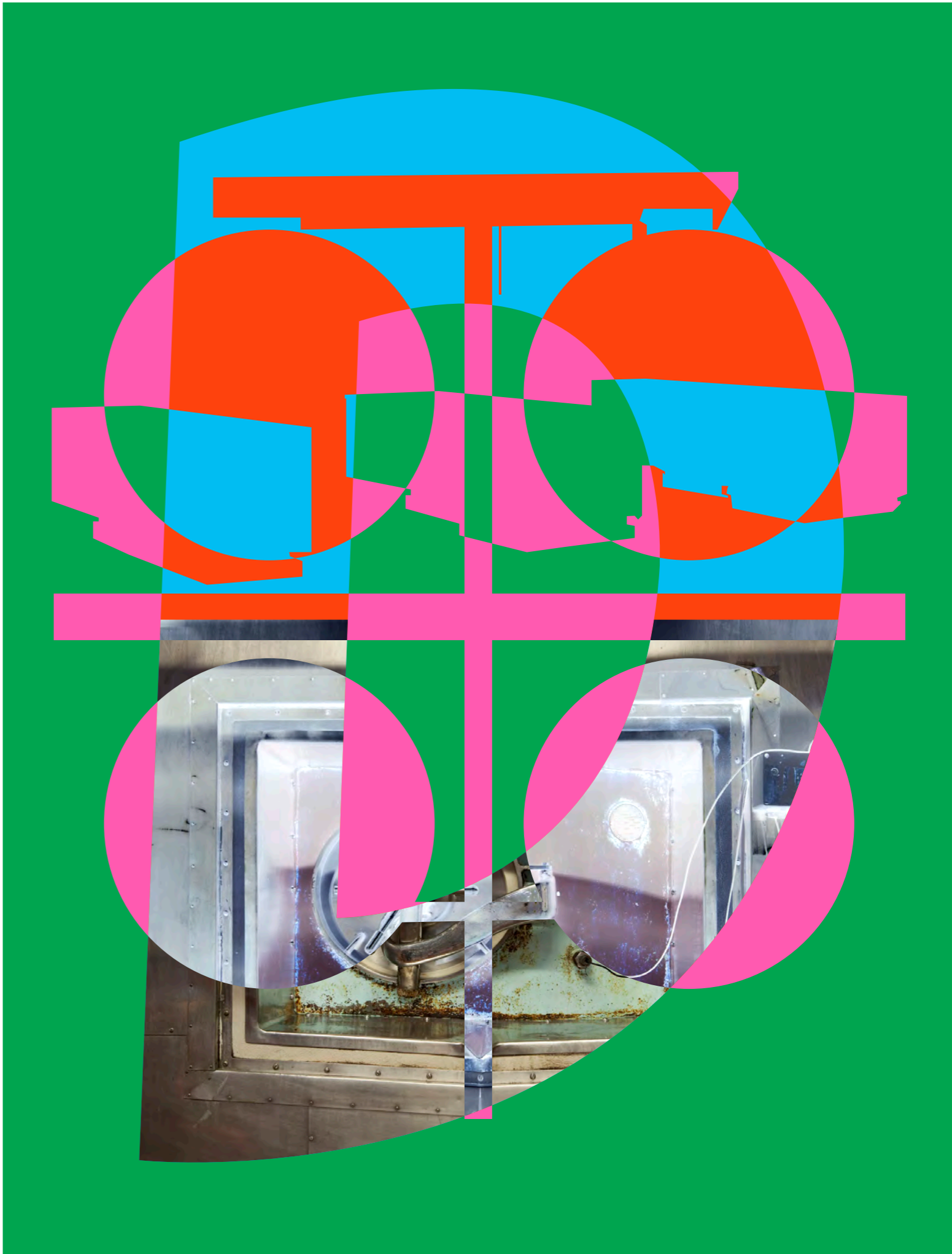
in Claythorn.) He was an active man, and besides

being a goldsmith he owned a brewery,  situated

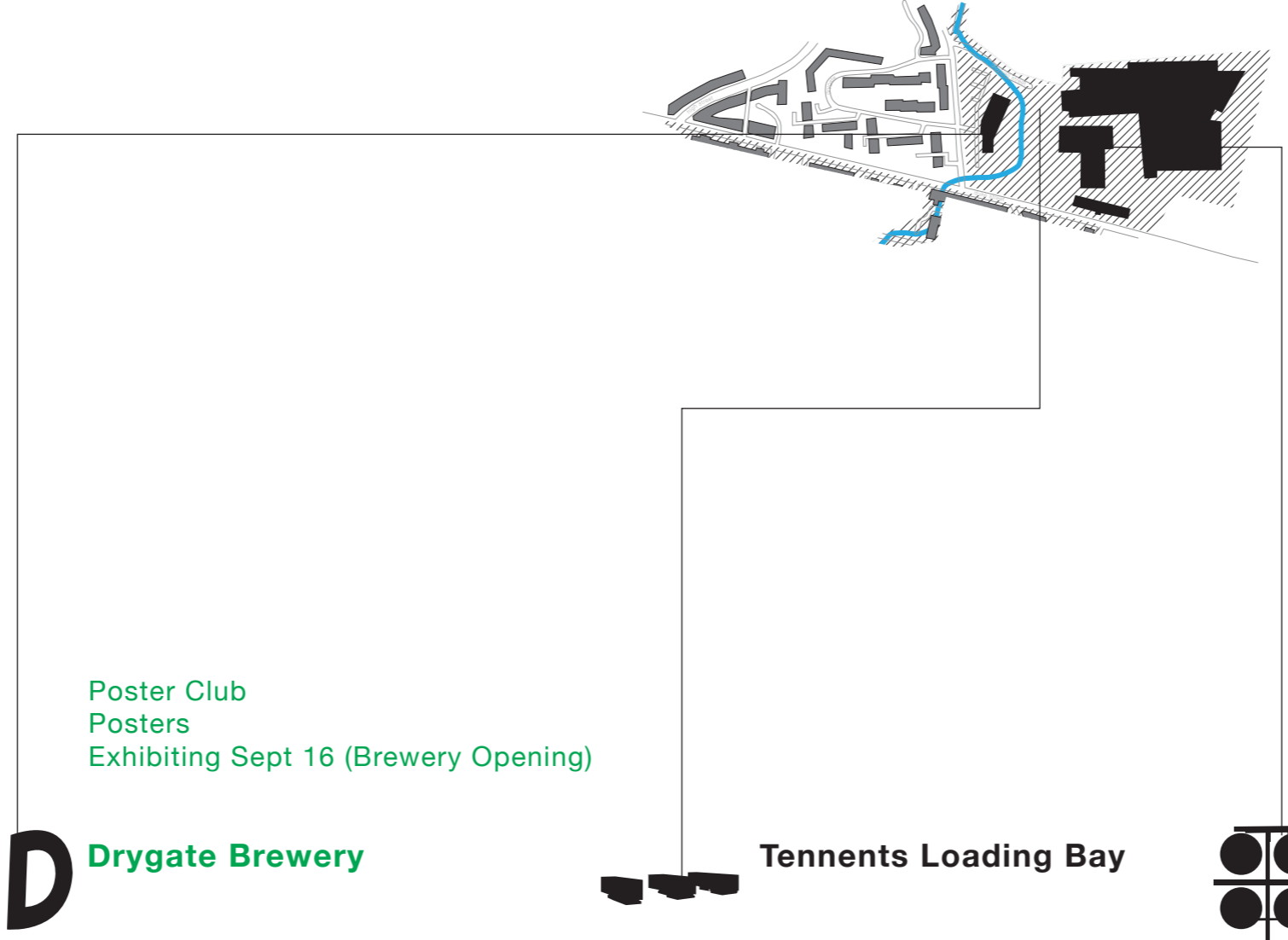
on the Molendinar in the Gallowgate known as

“Lukes Bewarie” which in 1736 was the only

brewery in Glasgow. - [The Regality Club](#), pp 61



Tennents Brewery



No. 6 Today according to Scottish Water over 95% of the

Molendinar Burn has been culverted. The ancient

stream can only be glimpsed in a couple of select

places along its course. There appears to be a

clear relationship between this lack of visibility and

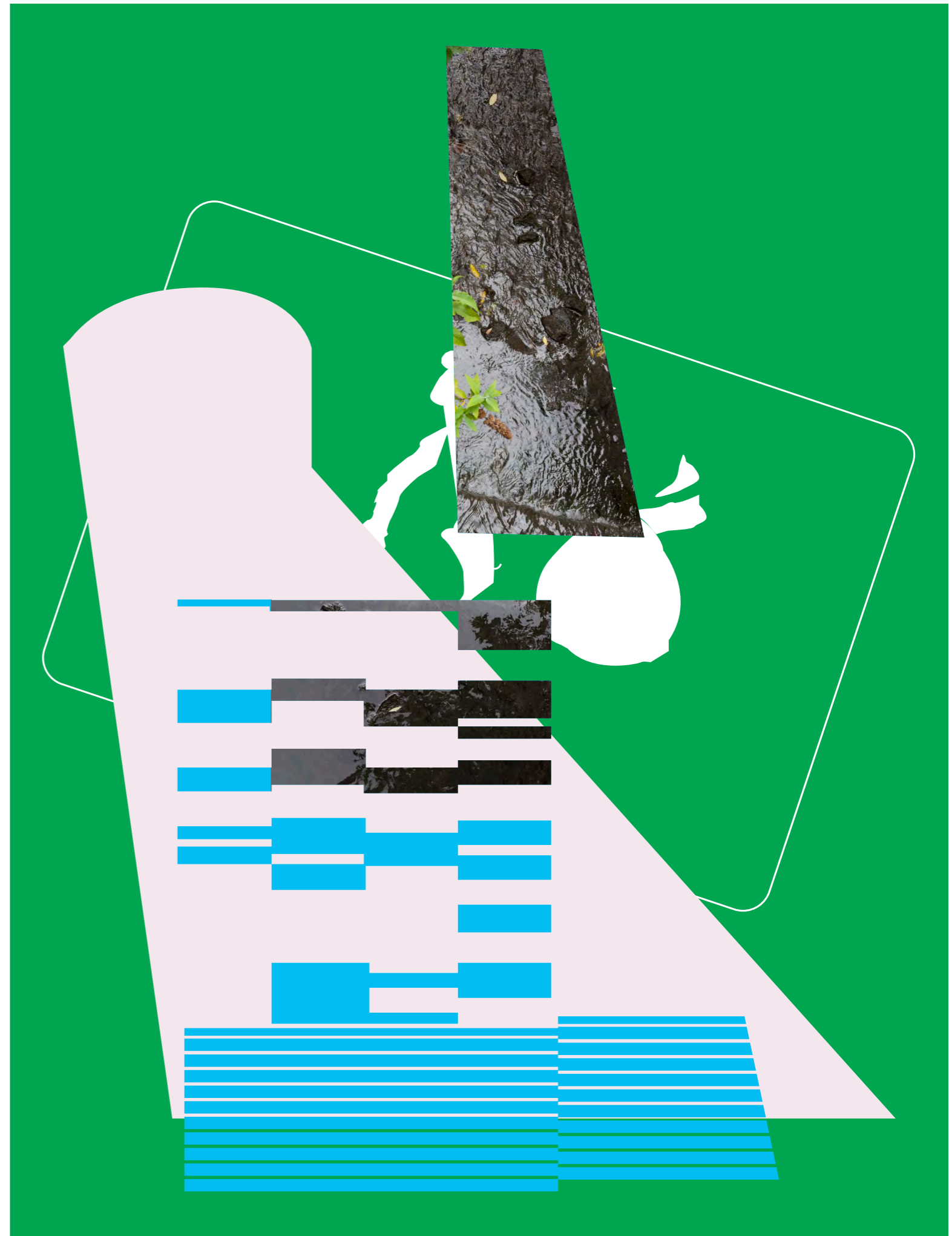
corresponding levels of awareness about the burn's

history. - [Paper No 4](#) - The Strategic Response to Glasgow

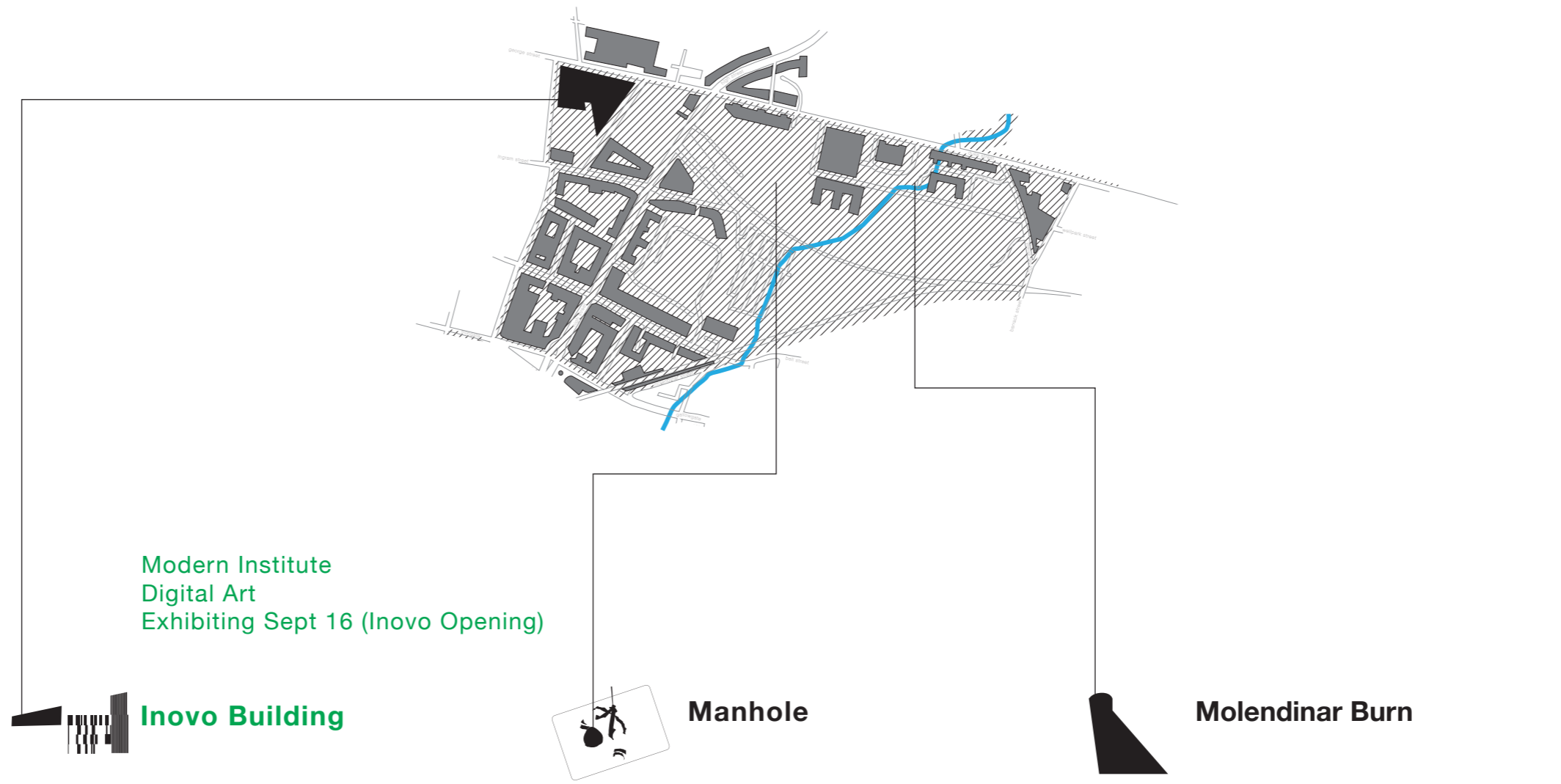
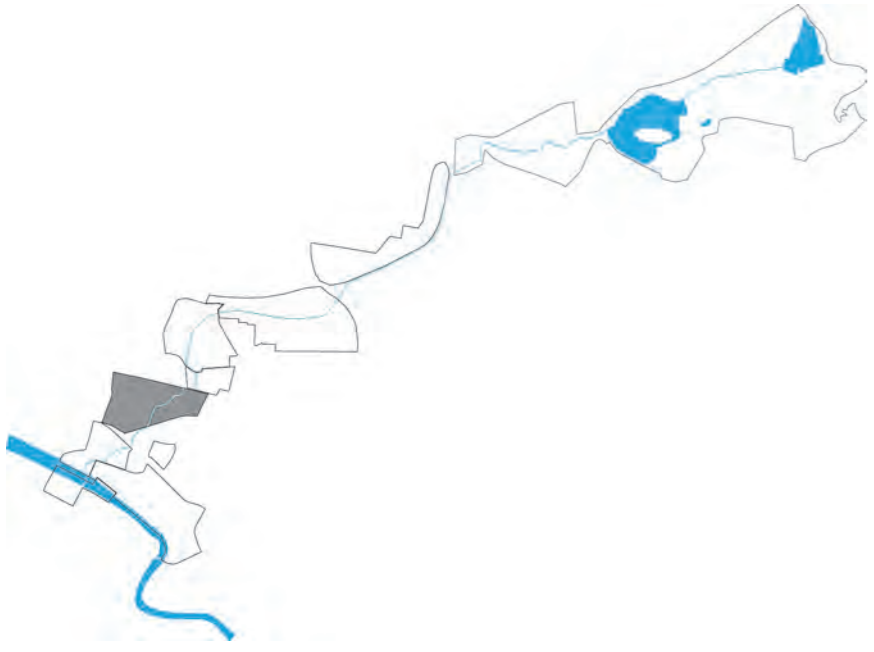
East End Flooding. David Wilson (Scottish Water) &

Martin Spiers (Montgomery Watson Harza),

19 June 2003.



Collegelands



Barrowlands

No. 7 'A great city is not the haunt wherein we can

hope to find the wimpling burns of which

poets, and artists, and wayfarers fondly

dream. The arctic eye of commerce  looks

askance at the humbler waterways of nature,

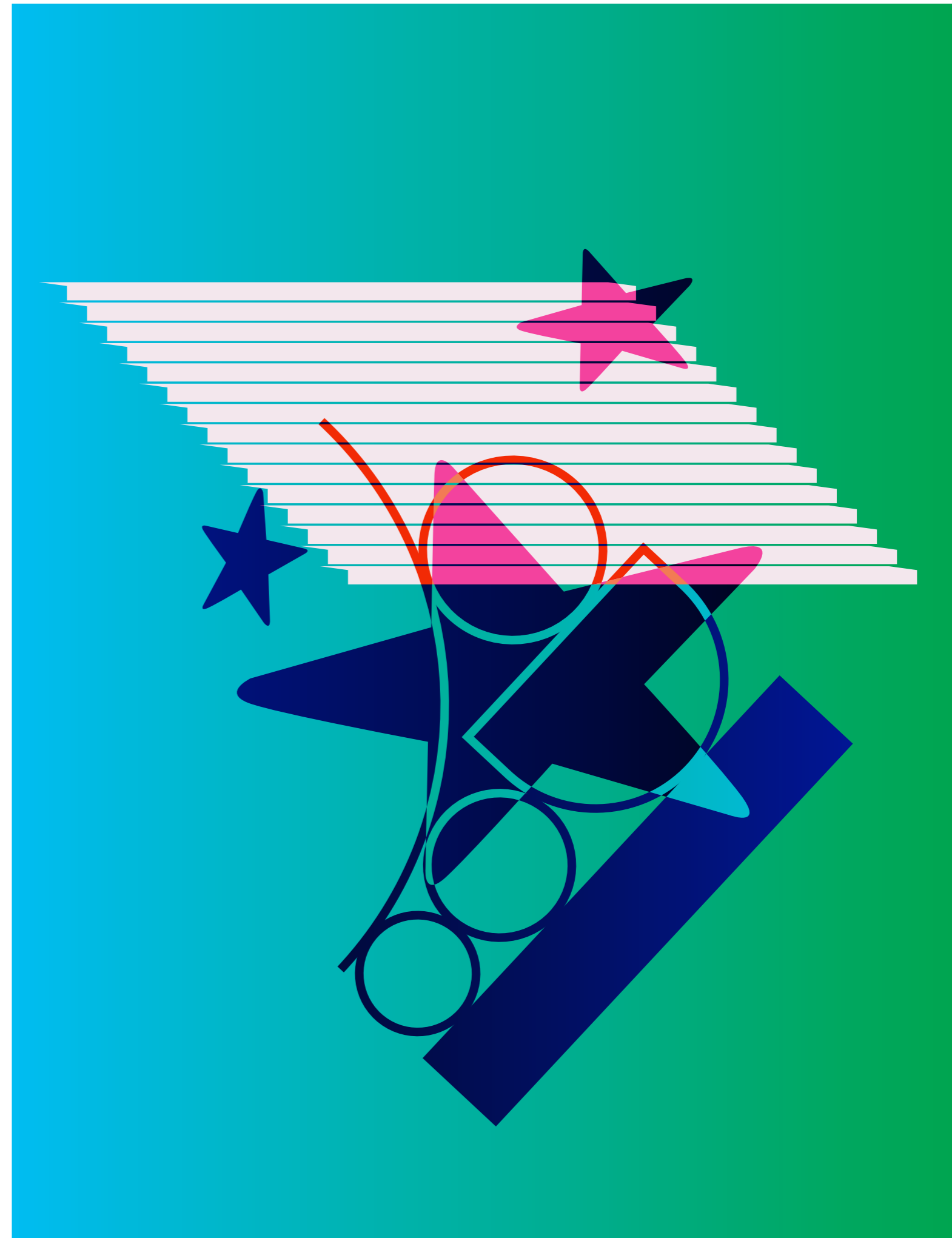
and as the octopus of industry advances over

the verdant countryside she absorbs and then

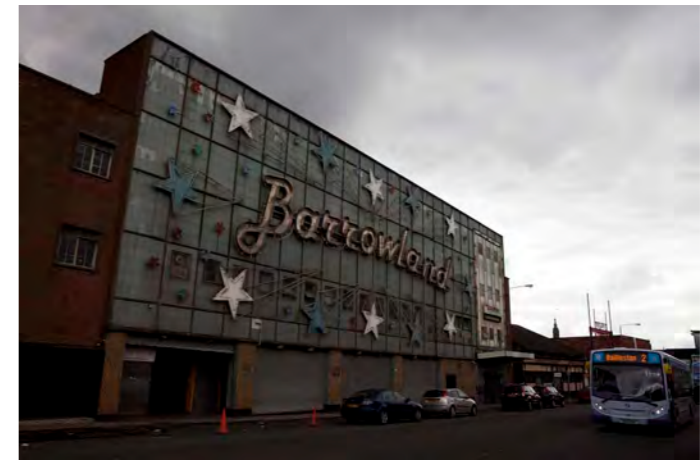
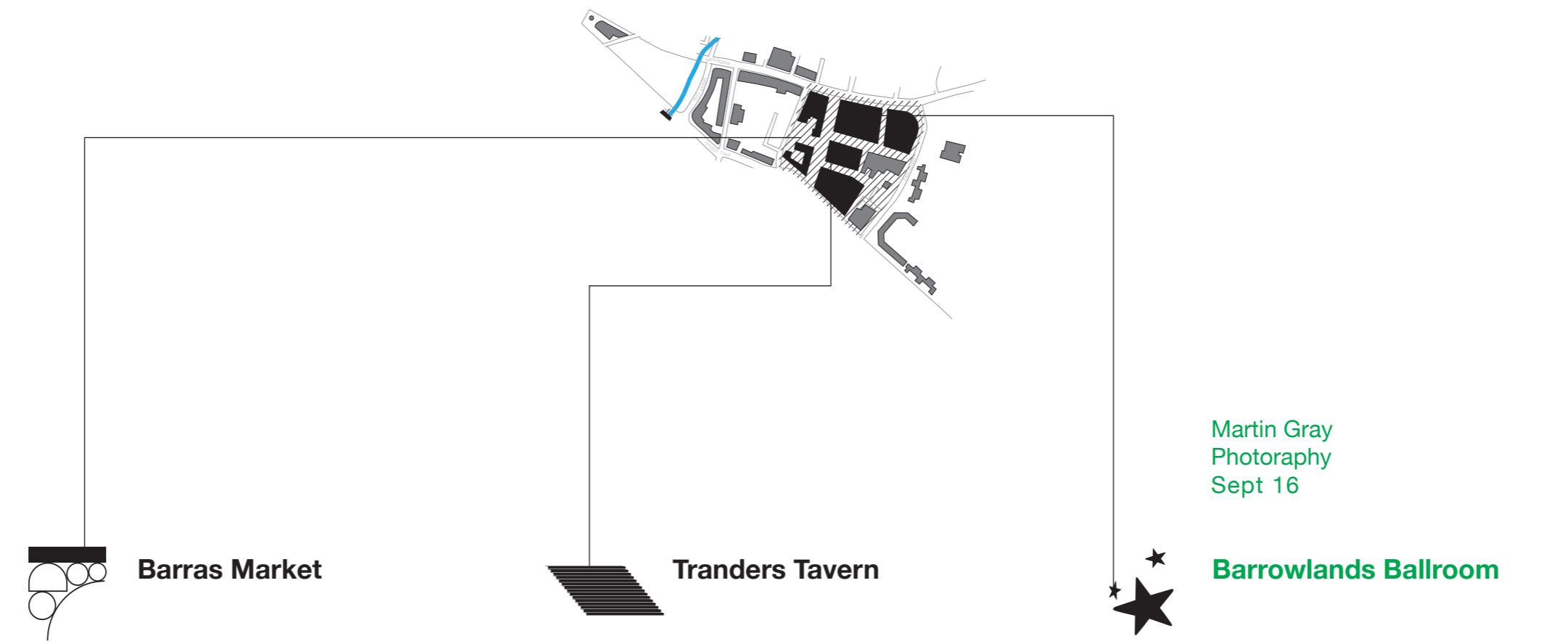
hides them from human ken' - Brotchie T.

Glasgow Rivers and Streams – Their Legend

and Lore (1914) p. 139.



Barrowlands



No. 8 'Nature not only has psychosocial value in the city

context, it also improves the local microclimate,

relieves environmental pressures on the city region and

provides mental relief and contrast for urban dwellers.

Nature and landscape in the city are hence important

for improving the quality of life in urban areas and for

making those areas more sustainable in every sense of

the word – ecologically, socially and economically'

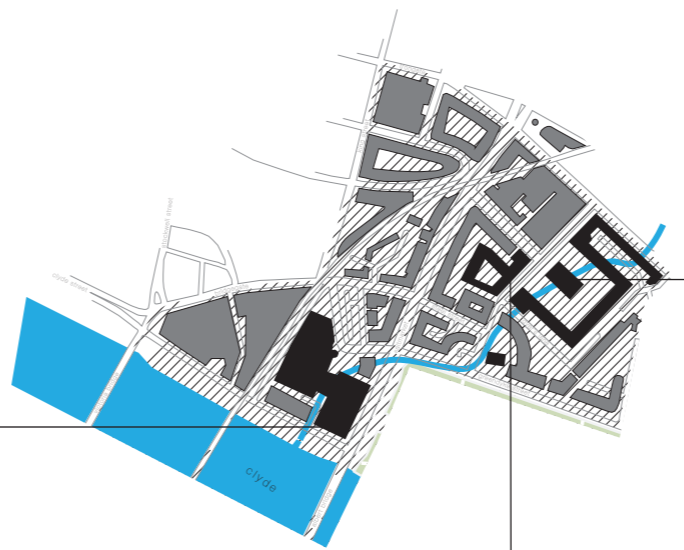
- Thomas R. Sustainable Urban Design. Span Press.

(2003) Chapter 4



WITNESSES

Saltmarket



High Court



WITNESSES

Laura Lamas
Performance Art
Sept 16

Old Courthouse



St Andrews in the Square



Glasgow Green

No. 9 The word 'Glasgow' translated from Gaelic (Glaschu)

literally means 'dear green place'. The physical impact of human

development within the city boundary has been such that this

name has a certain degree of irony attached. Glasgow, though,

has reason to be proud of its green heritage, boasting the

world's first public green – Glasgow Green, as well as an

array of Victorian parks north and south of the Clyde. Of

course, Glasgow was settled by St. Kentigern 'because of

the placid beauty which he found.' - Brotchie T. Glasgow

Rivers and Streams - Their Legend and Lore (1914),

published by James Maclehouse & Sons. p. 139.



Glasgow Green



Michael Stumpf
Instillation
Sept 16



McLennan Arch



Whistling Kirk



Peoples Palace



No. 10 'I still refer to the Molendinar as her. I knew she had

gone into the Clyde so I went down the Clyde in a

boat  on an imaginary trip that the Molendinar

would take, wondering where it would lead to. And I dis-

covered that it led to the Firth of Clyde and eventually

into the Irish Sea and we joined the Gulf Stream which

was coming from the North and working its way South.

So I was quite content that this was where the Molen-

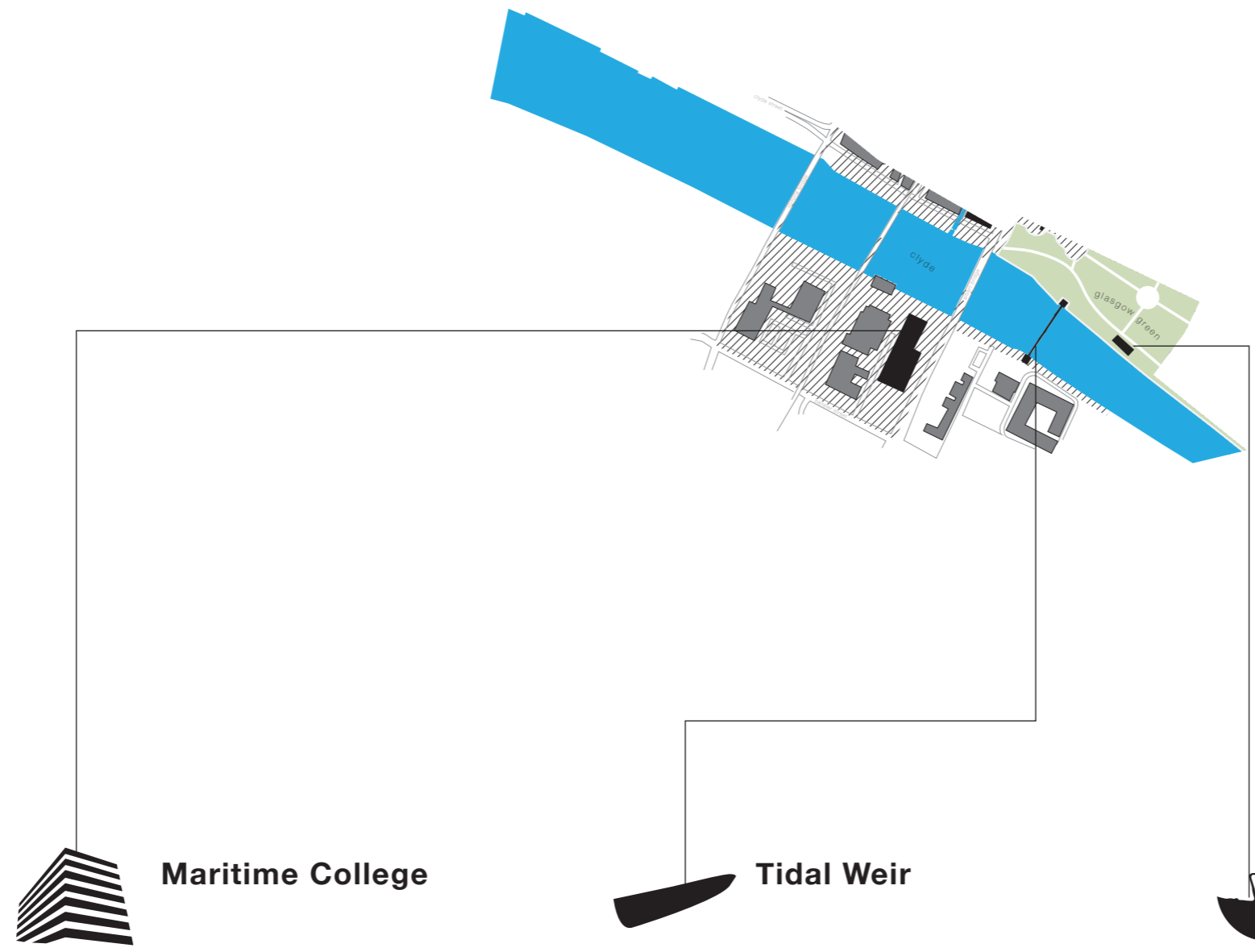
dinar had ended; joining the Gulf Stream to wherever it

was going around the World'. Resident, Tom Elliott

Clyde



Clyde



Wilfredo Prieto
Sculpture
Exhibiting September 16

**‘Do you think
children now would
know what the
Molendinar is?’**

**‘No, they wouldn’t
have a clue’**

Agnes Campbell, interviewed 2002

ADVISORY PANEL

Iain Carson, Director, Carson & Partners, Glasgow and London

Dolan Cummings, Writer and Associate Fellow of the

Institute of Ideas in London

John Gilligan, Managing Director, Head of CSR, Tennents

Prof. Gerry Gramms, Director, The Festival of Architecture 2016

Tiffany Jenkins, Cultural Sociologist and Writer

Toby Webster, Director Modern Institute, Glasgow

Paul Stallan, Director Stallan and Brand, Glasgow

Sarah Strang, Artist

Photography by Daniela Sbrisny