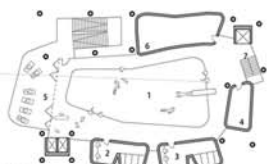


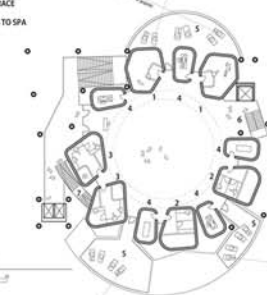
sky bar 89500

- 1 SKYBAR GARDEN
- 2 SKYBAR
- 3 STONE



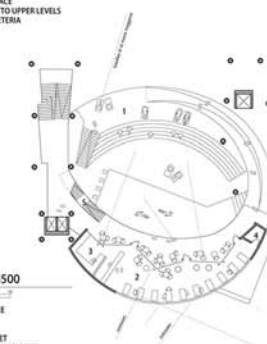
heated pool 83500

- 1 HEATED POOL
- 2 MALE CHANGING
- 3 FEMALE CHANGING
- 4 STONE
- 5 EXTERNAL TERRACE
- 6 MACHINERY
- 7 SECURE ACCESS TO SPA



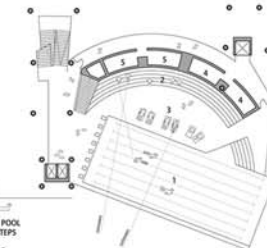
spa 61000

- 1 HOTTUB
- 2 FINNISH SPA
- 3 TURKISH SPA
- 4 MASSAGE
- 5 EXTERNAL TERRACE
- 6 SECURE ACCESS TO UPPER LEVELS
- 7 ACCESS TO CAFETERIA



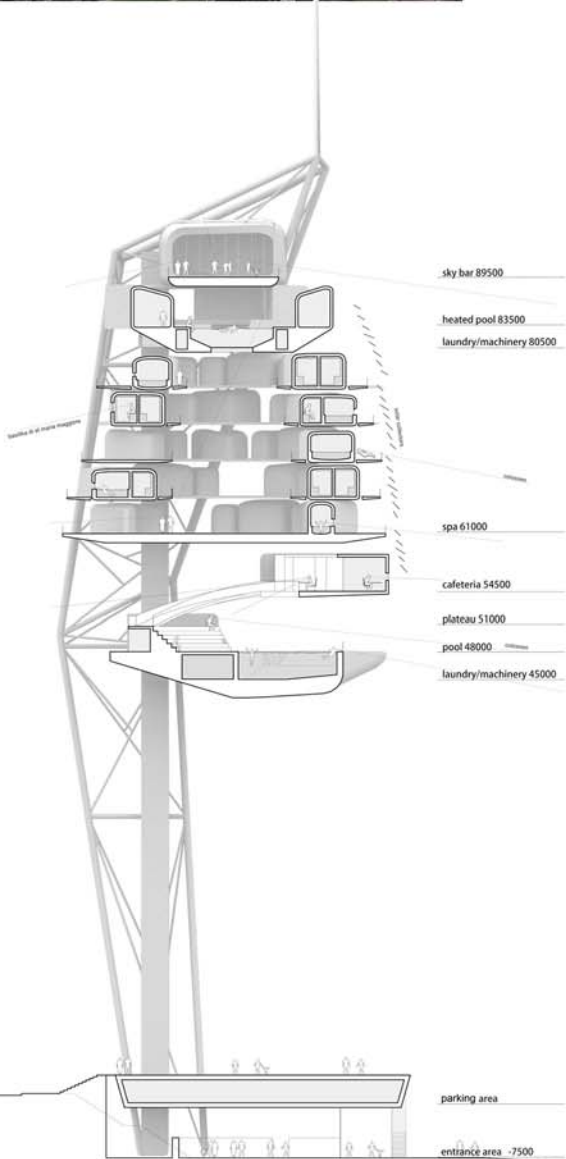
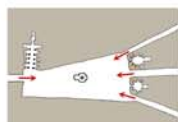
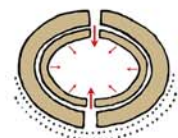
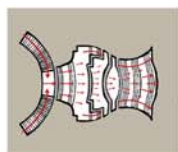
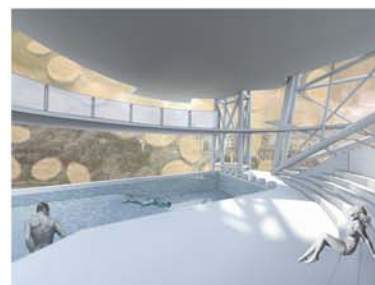
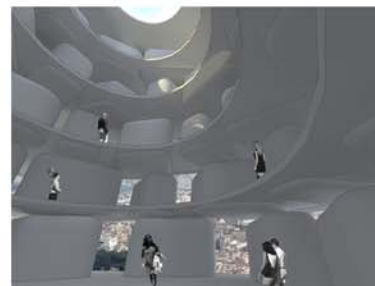
cafeteria 54500

- 1 PUBLIC TERRACE
- 2 CAFETERIA
- 3 PREP AREA
- 4 DISABLED TOILET
- 5 ACCESS TO SPA/RECEPTION



pool 48000

- 1 SHIRT COURSE POOL
- 2 COLLOSSEUM STEPS
- 3 PUBLIC SPACE
- 4 MALE CHANGING
- 5 FEMALE CHANGING



sky bar 89500

heated pool 83500

laundry/machinery 80500

spa 61000

cafeteria 54500

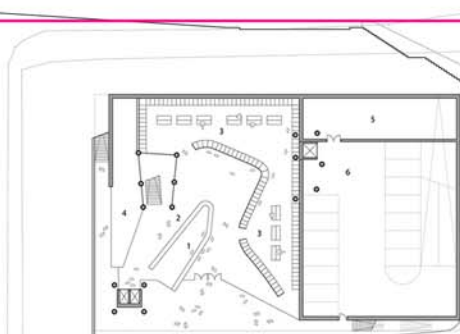
plateau 51000

pool 48000

laundry/machinery 45000

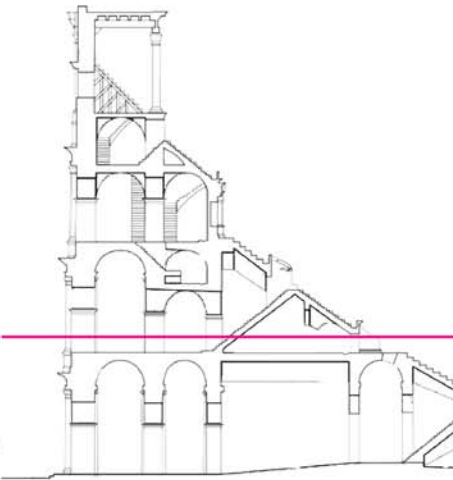
parking area

entrance area -7500



entrance area -7500

- 1 RECEPTION AND DISTRIBUTION OF WHIRLSTANDS
- 2 SECURE ENTRY
- 3 LOCKERS AND DRESSING ROOMS
- 4 ADMINISTRATION
- 5 WAREHOUSE
- 6 STAFF PARKING AND LOADING BAY



rome

## VERTICAL SPA

[2010] competition  
Rome, Italy

Tilo Einert, Robert Mantho, Robert Harvey

Any proposal for a tower in Rome must necessarily recognize the potential violation of the existing fabric of one of the world's most important cities. This proposal used the myth of Apollo and Daphne as an analogy to address this problem.

The proposal posits that the only appropriate tower for Rome is a tower that expresses the spirit of Rome's urbanity - one of complexity and extraordinary variety in epoch, scale and delight. The experiential cues of the horizontal city are translated into a vertical circulation system with ascent generating a fluctuating perception of both the internal environment and the city beyond.