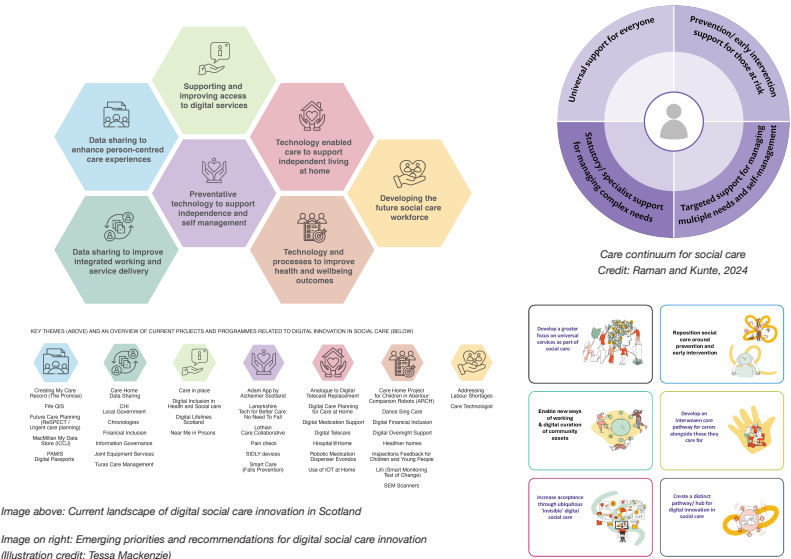


Digital Innovation in Social Care in Scotland

Margaret Whoriskey, Sneha Raman, Don McIntyre



The Digital Health & Care Innovation Centre (DHI) was commissioned by Scottish Government Digital Health and Care Division (DH&C) in January 2024 to develop a Care and Wellbeing Innovation Portfolio to support the delivery of the policy objectives of Scottish Government and CoSLA Digital Health and Care Strategy.

This work provides a coherent starting point to make sense of a complex and evolving landscape. Using design research methods developed by researchers at the Glasgow School of Art and employing DHI's innovation process model, stakeholders from 20 organisations across Scotland took part in a series of collaborative sessions between March – October 2024. The engagement involved contributions to an initial online survey followed by two in person co-design workshops and one online collaborative review session.

The insights from these activities produced key findings related to creating an infrastructure to support digital innovation in social care; a framework for guiding, analysing and prioritising innovation impacts ('care continuum'); and identifying opportunities for alignment of work already underway to support acceleration and

scale. The work has highlighted the importance of universal and preventative services and support to act as a foundation for all stages of the 'care continuum' to maintain holistic support.

A third in-person co-design session was organised in March 2025, to collaboratively develop a distinct pathway/framework to support acceleration and scaling of innovation in the social care sector and approach to creating a digital social care innovation hub, based on emerging actions and priorities identified during the collaborative review.

Further work will continue to use an iterative approach to build collaborations and partnerships with policy, practice, academia and industry, and focus on an implementation programme, timelines and associated governance for the innovation hub. The key objective is to create the conditions for the development of digital social care innovations that are sustainable and scalable, supporting the cultural and mindset shift required to implement in practice.